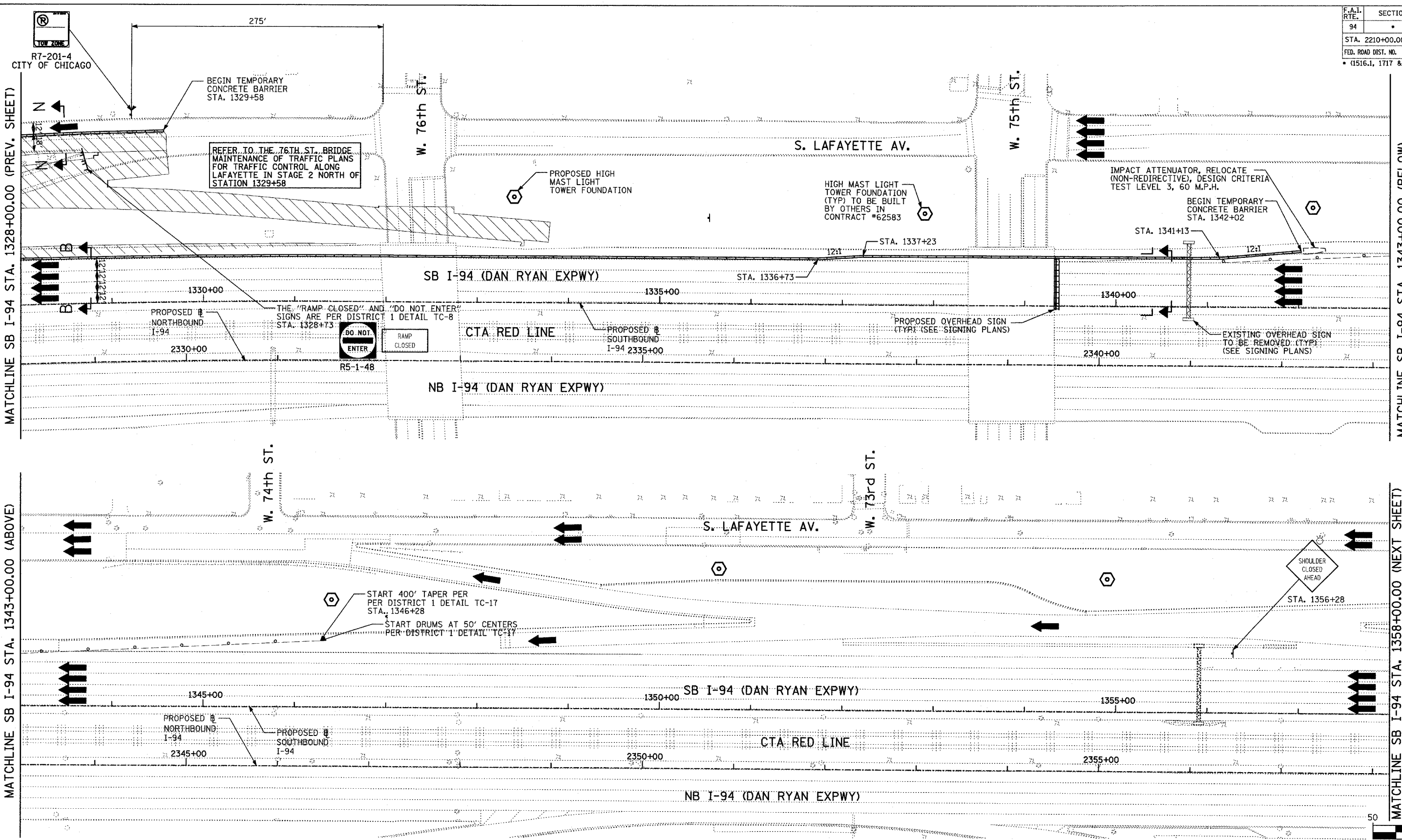


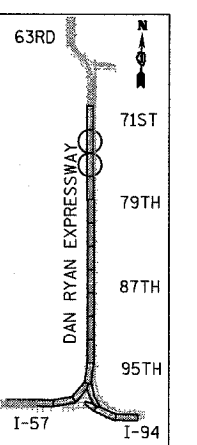
F.A.I. RTE.	SECTION	COUNTY	TOTAL SHEETS	SHEET NO.
94		COOK	39	36
STA. 2210+00.00 TO STA. 2356+00.00				
FED. ROAD DIST. NO.		ILLINOIS	FED. AID PROJECT	
1516.1, 1717 & 1818		1-5		62934



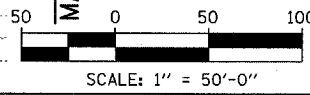
MATCHLINE SB I-94 STA. 1328+00.00 (PREV. SHEET)

MATCHLINE SB I-94 STA. 1343+00.00 (BELOW)

MATCHLINE SB I-94 STA. 1358+00.00 (NEXT SHEET)



LOCATION MAP



FOR INFORMATION ONLY

LEGEND:

- TEMPORARY CONCRETE BARRIER
- TRAFFIC LANE
- WORK ZONE
- BARRICADE, TYPE III
- DRUM WITH MONO-DIRECTIONAL STEADY BURNING LIGHT
- ARROW BOARD

REVISIONS	
NAME	DATE

ILLINOIS DEPARTMENT OF TRANSPORTATION
 F.A.I. 94 (DAN RYAN EXPRESSWAY)
 MAINTENANCE OF TRAFFIC PLAN
 SB I-94 - STAGE 2
 SB I-94 STA. 1328+00 TO 1358+00
 CONTRACT #62695 (17B) - SHEET 3 OF 3
 SCALE: 1"=50'-0" DRAWN BY: JPA, RTM
 DATE: JULY 8, 2005 CHECKED BY: MAG, JPM

TYLIN INTERNATIONAL

07/11/2005 12:36:53 PM