

|                |           |        |                 |              |
|----------------|-----------|--------|-----------------|--------------|
| F.A. -<br>RTE. | SECTION   | COUNTY | TOTAL<br>SHEETS | SHEET<br>NO. |
| VAR.           | 2005-0191 | COOK   | 9               | 1            |

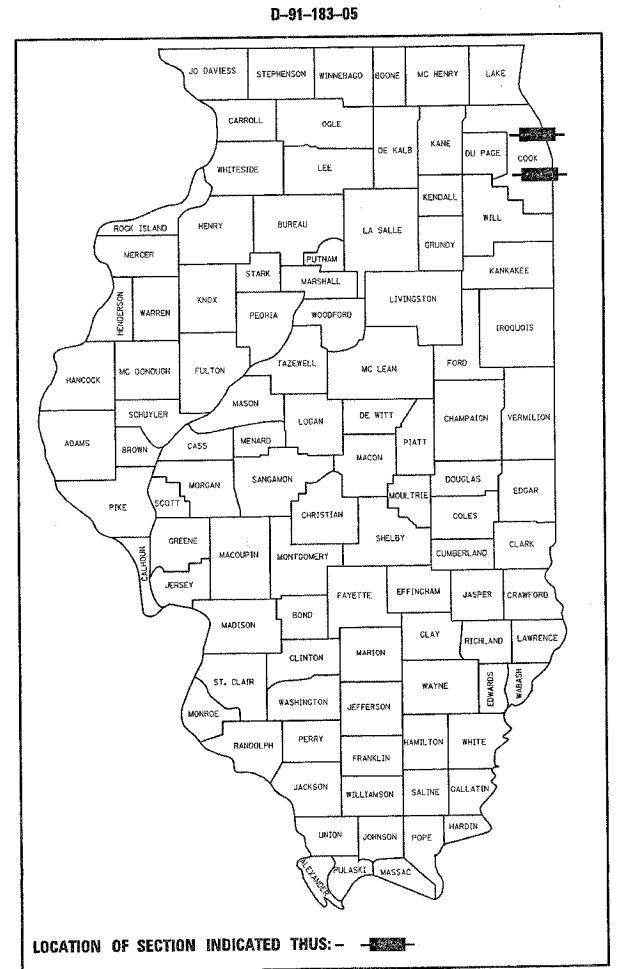
STATE OF ILLINOIS  
DEPARTMENT OF TRANSPORTATION  
DIVISION OF HIGHWAYS

**PROPOSED  
HIGHWAY PLANS**

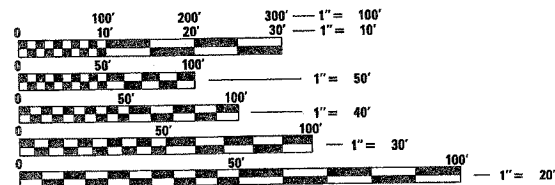
VARIOUS ROUTES  
SECTION 2005-0191  
BRIDGE REPAIR  
PERMANENT PROTECTIVE SHIELDING  
COOK COUNTY  
C-91-183-05

FOR INDEX OF SHEETS, SEE SHEET NO. 3

THESE IMPROVEMENTS ARE LOCATED IN  
THE VILLAGES OF SKOKIE, MORTON GROVE,  
STICKNEY, TINLEY PARK AND THE  
CITY OF CHICAGO



DISTRICT ONE DESIGN PLAN PREPARATION ENGINEER:  
KEN ENGRUBERT BORO (847) 705-4718



FULL SIZE PLANS HAVE BEEN PREPARED USING STANDARD  
ENGINEERING SCALES. REDUCED SIZED PLANS WILL NOT  
CONFORM TO STANDARD SCALES. IN MAKING MEASUREMENTS  
ON REDUCED PLANS, THE ABOVE SCALES MAY BE USED.

J.U.L.I.E.  
JOINT UTILITY LOCATION INFORMATION FOR EXCAVATION  
1-800-892-0123

CONTRACT NO. 62944

STATE OF ILLINOIS  
DEPARTMENT OF TRANSPORTATION  
DIVISION OF HIGHWAYS

SUBMITTED May 27, 20 05

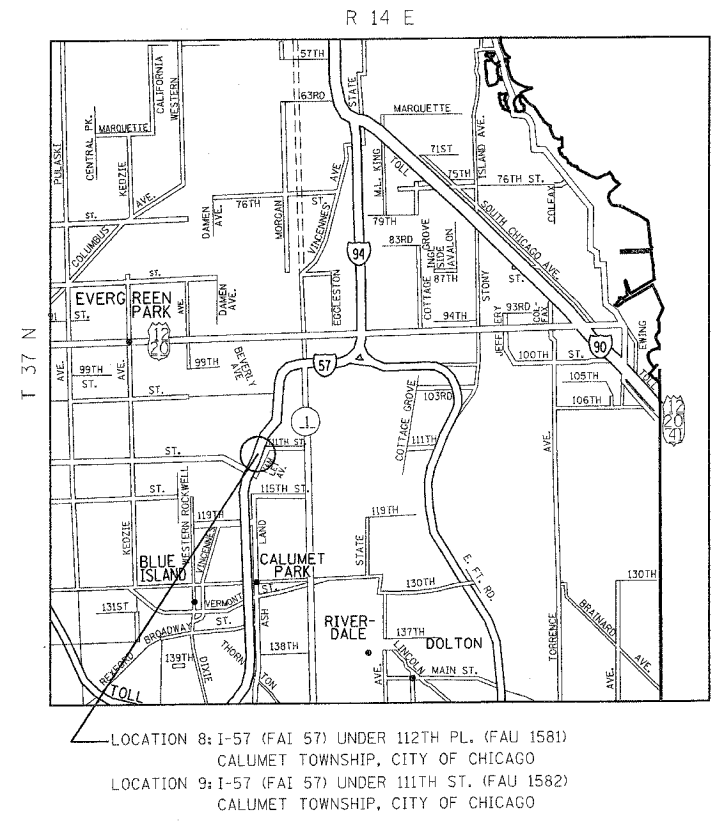
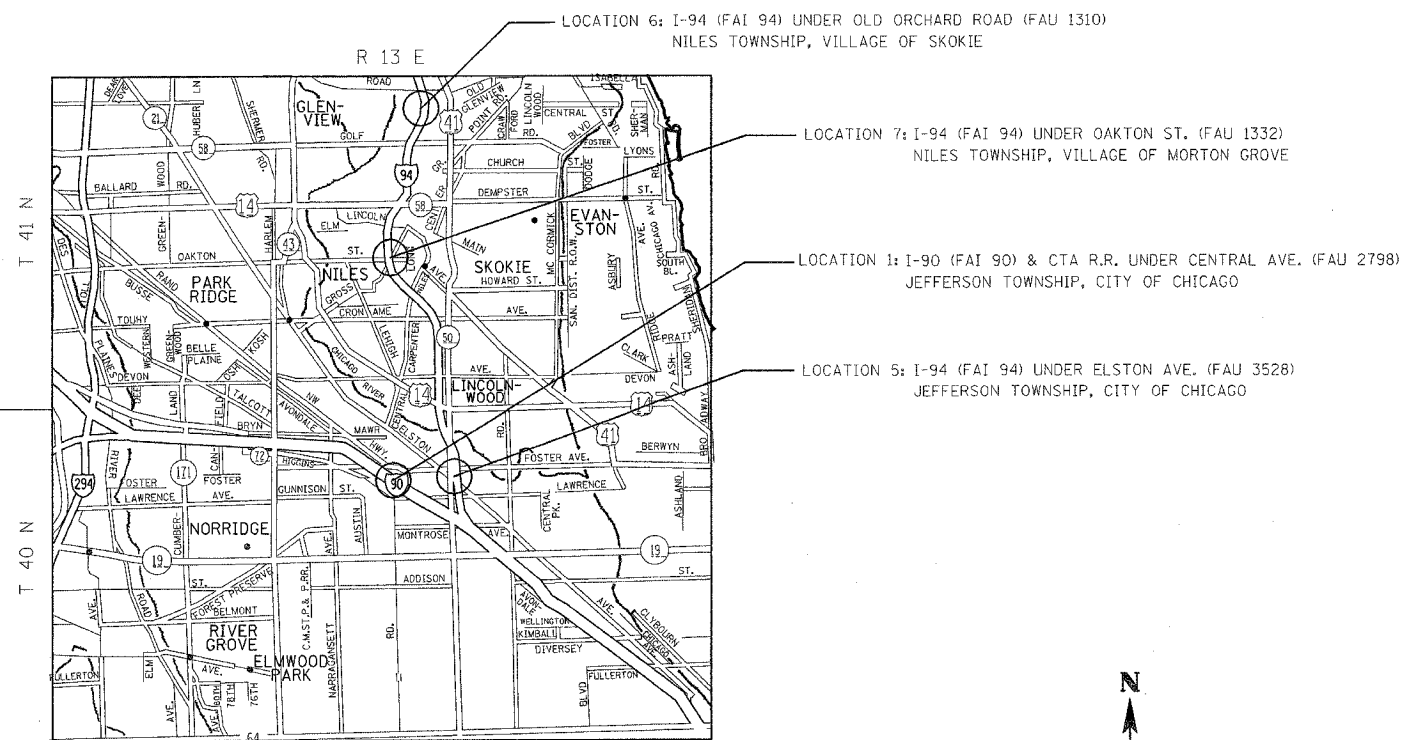
Dina O'Keefe  
DEPUTY DIRECTOR OF HIGHWAYS, REGION ENGINEER

July 1, 20 05  
Mike Hene  
ENGINEER OF DESIGN AND ENVIRONMENT

July 1, 20 05  
Victor Madert  
DIRECTOR OF HIGHWAYS, CHIEF ENGINEER

**PRINTED BY THE AUTHORITY  
OF THE STATE OF ILLINOIS**

|   |           |               |              |           |
|---|-----------|---------------|--------------|-----------|
| F.A. RTE.                                       | SECTION   | COUNTY        | TOTAL SHEETS | SHEET NO. |
| VAR.  | 2005-0191 | COOK          | 9            | 2         |
| STA. _____                                      |           | TO STA. _____ |              |           |
| FED. ROAD DIST. NO. - ILLINOIS FED. AID PROJECT |           |               |              |           |

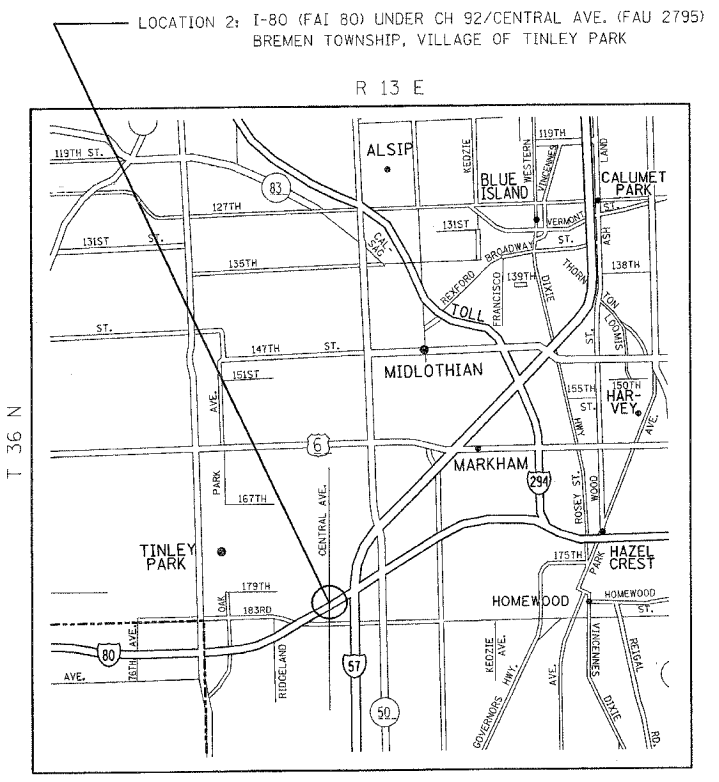
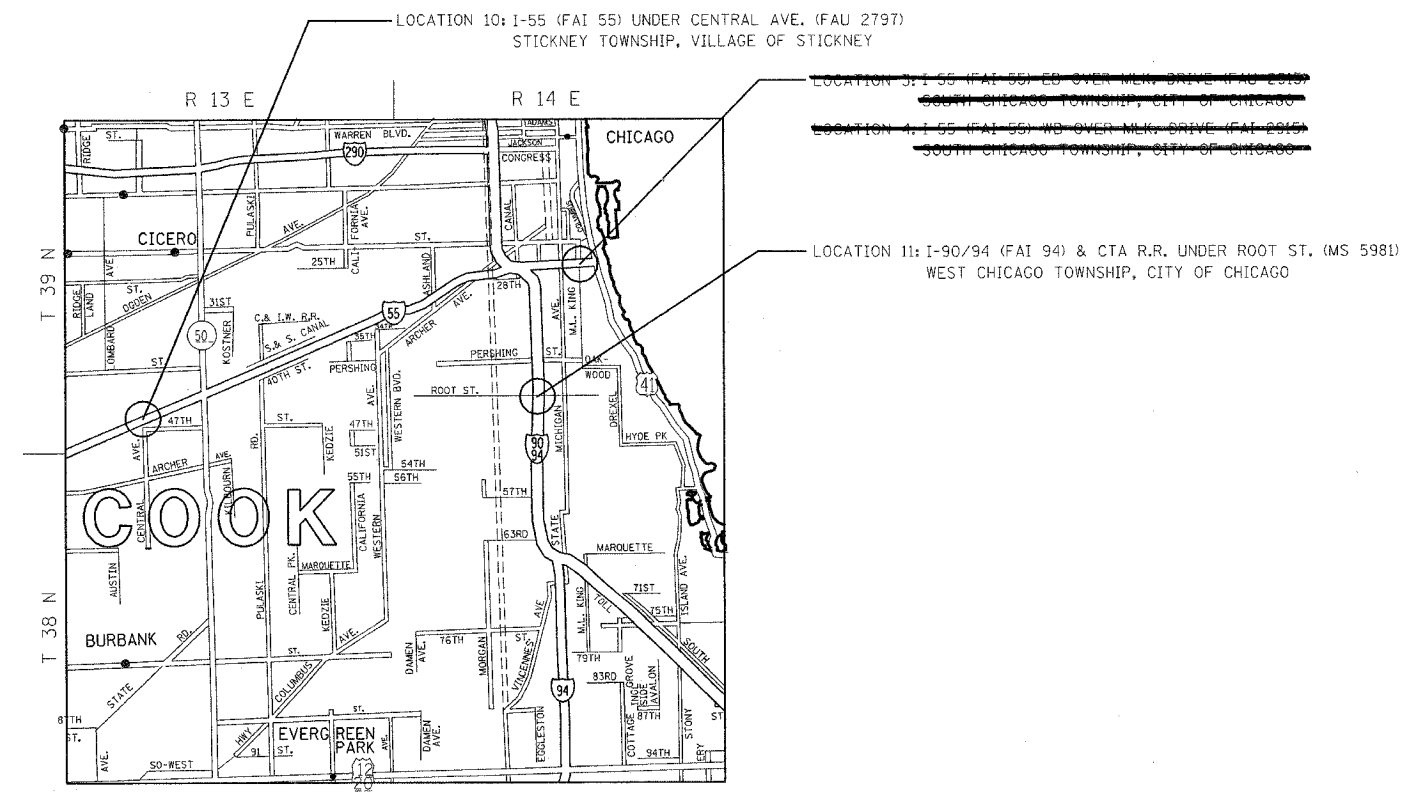


**AVERAGE DAILY TRAFFIC**

- LOCATION 1: 170,800 (2003) - I-90
- LOCATION 2: 89,800 (2004) - I-80
- ~~LOCATION 3: 19,200 (2000) - MLK~~
- ~~LOCATION 4: 10,200 (2000) - MLK~~
- LOCATION 5: 161,600 (2003) - I-94
- LOCATION 6: 144,100 (2003) - I-94
- LOCATION 7: 174,600 (2003) - I-94
- LOCATION 8: 107,600 (2003) - I-57
- LOCATION 9: 107,600 (2003) - I-57
- LOCATION 10: 137,200 (2003) - I-55
- LOCATION 11: 313,600 (2003) - I-90/94

**STRUCTURE NUMBER**

- LOCATION 1: 016-0659
- LOCATION 2: 016-2458
- ~~LOCATION 3: 016-0659~~
- ~~LOCATION 4: 016-1055~~
- LOCATION 5: 016-0610
- LOCATION 6: 016-0827
- LOCATION 7: 016-0823
- LOCATION 8: 016-0988
- LOCATION 9: 016-0989
- LOCATION 10: 016-0724
- LOCATION 11: 016-1154



| REVISIONS |      |
|-----------|------|
| NAME      | DATE |
|           |      |
|           |      |
|           |      |
|           |      |
|           |      |
|           |      |
|           |      |
|           |      |
|           |      |
|           |      |

ILLINOIS DEPARTMENT OF TRANSPORTATION

LOCATION MAP

SCALE: VERT. \_\_\_\_\_  
HORIZ. \_\_\_\_\_

DATE \_\_\_\_\_ DRAWN BY \_\_\_\_\_  
CHECKED BY \_\_\_\_\_

PLOT DATE = 5/26/2005  
FILE NAME = I:\118305\118305.dgn  
PLOT SCALE = 50.0000 / IN.  
USER NAME = atonlejr

Rev.

|                           |           |                           |              |           |
|---------------------------|-----------|---------------------------|--------------|-----------|
| F.A. RTE.                 | SECTION   | COUNTY                    | TOTAL SHEETS | SHEET NO. |
| VAR.                      | 2005-019I | COOK                      | 9            | 3         |
| STA. _____                |           | TO STA. _____             |              |           |
| FED. ROAD DIST. NO. _____ |           | ILLINOIS FED. AID PROJECT |              |           |

INDEX OF SHEETS

1. TITLE SHEET
2. LOCATION MAP
3. INDEX OF SHEETS, STATE STANDARDS AND GENERAL NOTES
4. SUMMARY OF QUANTITIES
- 5.-7. LOCATION DETAILS
8. PERMANENT PROTECTIVE SHIELD DETAILS
9. TRAFFIC CONTROL FOR PARTIAL RAMP AND SHOULDER CLOSURES

LIST OF STATE STANDARDS

- 701400-02 APPROACH TO LANE CLOSURE, FREEWAY/EXPRESSWAY
- 701401-05 LANE CLOSURE, FREEWAY/EXPRESSWAY
- 701446 TWO LANE CLOSURE, EXPRESSWAY
- 702001-05 TRAFFIC CONTROL DEVICES

GENERAL NOTES

BEFORE STARTING ANY EXCAVATION, THE CONTRACTOR SHALL CALL "J.U.L.I.E." AT (800) 892-0123 OR "C.U.A.N" AT (312) 744-7000 FOR FIELD LOCATIONS OF BURIED ELECTRIC, TELEPHONE AND GAS UTILITIES.  
48 HOUR NOTIFICATION PRIOR TO START OF WORK IS REQUIRED.

DO NOT SCALE PLANS FOR CONSTRUCTION DIMENSIONS

THE CONTRACTOR SHALL CONTACT THE DISTRICT ONE TRAFFIC CONTROL SUPERVISOR AT (847) 705-4151 A MINIMUM OF 72 HOURS IN ADVANCE OF BEGINNING WORK.

THE CONTRACTOR SHALL BE AWARE THAT SOME LOCATIONS HAVE UTILITY CONDUITS. ANY DAMAGE TO THE CONDUITS CAUSED BY THE CONTRACTOR'S OPERATIONS SHALL BE REPLACED OR REPAIRED BY THE CONTRACTOR AT THEIR EXPENSE. THE CONTRACTOR SHALL ADJUST THE PROTECTIVE SHIELDING TO FIT AROUND THE CONDUITS. DETAILS SHALL BE APPROVED BY THE ENGINEER BEFORE INSTALLATION. THE CONTRACTOR SHALL COORDINATE CONSTRUCTION ACTIVITIES WITH UTILITY COMPANIES.

PLAN DIMENSIONS AND DETAILS RELATIVE TO EXISTING STRUCTURES HAVE BEEN TAKEN FROM

EXISTING PLANS AND ARE SUBJECT TO NOMINAL VARIATIONS FROM WHAT IS ACTUALLY EXISTING. IT SHALL BE THE CONTRACTORS RESPONSIBILITY TO VERIFY SUCH DIMENSIONS AND DETAILS IN THE FIELD AND MAKE NECESSARY APPROVED ADJUSTMENTS PRIOR TO CONSTRUCTION OR ORDERING OF MATERIALS. SUCH VARIATIONS SHALL NOT CAUSE FOR ADDITIONAL COMPENSATION FOR A CHANGE IN THE SCOPE OF THE WORK. HOWEVER, THE CONTRACTOR WILL BE PAID FOR THE QUANTITY ACTUALLY FURNISHED AT THE UNIT PRICE BID FOR THE WORK.

WHEN ARTIFICIAL LIGHTING IS UTILIZED IN NIGHT OPERATIONS, THE CONTRACTOR SHALL EXERCISE THE UTMOST PRECAUTIONS IN PREVENTING ADVERSE VISIBILITY TO THE MOTORING PUBLIC AND ADJOINING RESIDENTIAL AREAS.

THE CONTRACTOR SHALL ADJUST THE PROTECTIVE SHIELDING TO RIDE ABOVE THE EXISTING LIGHTING FIXTURES IN ORDER TO MAINTAIN THE EXISTING LEVEL OF LIGHTING OF THE ROADWAY UNDERNEATH. DETAILS SHALL BE APPROVED BY THE ENGINEER BEFORE INSTALLATION.

THESE PLANS HAVE BEEN PREPARED FROM NOTES RECEIVED FROM BRIDGE INSPECTORS

| REVISIONS |      |
|-----------|------|
| NAME      | DATE |
|           |      |
|           |      |
|           |      |
|           |      |
|           |      |
|           |      |
|           |      |
|           |      |
|           |      |
|           |      |

ILLINOIS DEPARTMENT OF TRANSPORTATION

INDEX OF SHEETS, GENERAL NOTES,  
STATE STANDARDS

SCALE: VERT.  
DATE: HORIZ.

DRAWN BY  
CHECKED BY

62944

|                       |          |                 |              |           |
|-----------------------|----------|-----------------|--------------|-----------|
| F.A. RTE.             | SECTION  | COUNTY          | TOTAL SHEETS | SHEET NO. |
| VAR. 2005-0191        |          | COOK            | 9            | 4         |
| FED. ROAD DIST. NO. 1 | ILLINOIS | HIGHWAY PROJECT |              |           |

| SUMMARY OF QUANTITIES |  |                  | CONSTRUCTION TYPE CODE SFTY-2A |          |          |                     |                     |          |          |          |          |          |          |          |  |  |  |  |  |  |  |
|-----------------------|--|------------------|--------------------------------|----------|----------|---------------------|---------------------|----------|----------|----------|----------|----------|----------|----------|--|--|--|--|--|--|--|
| CODE NO               | ITEM   | UNIT             | URBAN<br>TOTAL<br>QUANTITIES   | LOC. 1   | LOC. 2   | <del>LOC. 3</del>   | <del>LOC. 4</del>   | LOC. 5   | LOC. 6   | LOC. 7   | LOC. 8   | LOC. 9   | LOC. 10  | LOC. 11  |  |  |  |  |  |  |  |
|                       |  |                  |                                | 016-0659 | 016-2458 | <del>016-0656</del> | <del>016-1055</del> | 016-0610 | 016-0827 | 016-0823 | 016-0988 | 016-0989 | 019-0724 | 016-1154 |  |  |  |  |  |  |  |
| 67100100              | MOBILIZATION                                 | L SUM            | 1                              | 0.11     | 0.11     | <del>0.05</del>     | <del>0.05</del>     | 0.11     | 0.11     | 0.11     | 0.11     | 0.11     | 0.11     | 0.12     |  |  |  |  |  |  |  |
| <del>70101700</del>   | <del>TRAFFIC CONTROL AND PROTECTION</del>    | <del>L SUM</del> | <del>1</del>                   |          |          | <del>0.05</del>     | <del>0.05</del>     |          |          |          |          |          |          |          |  |  |  |  |  |  |  |
| X0322066              | PROTECTIVE SHIELD (PERMANENT)                | SQ YD            | 8,538                          | 1281     | 456      | <del>1730</del>     | <del>1730</del>     | 986      | 700      | 358      | 995      | 938      | 1230     | 1594     |  |  |  |  |  |  |  |
| X7011015              | TRAFFIC CONTROL AND PROTECTION (EXPRESSWAYS) | L SUM            | 1                              | 0.11     | 0.11     |                     |                     | 0.11     | 0.11     | 0.11     | 0.11     | 0.11     | 0.11     | 0.12     |  |  |  |  |  |  |  |
| Z0048665              | RAILROAD PROTECTIVE LIABILITY INSURANCE      | L SUM            | 1                              | 0.5      |          |                     |                     |          |          |          |          |          |          | 0.5      |  |  |  |  |  |  |  |

| REVISIONS |      |
|-----------|------|
| NAME      | DATE |
|           |      |
|           |      |
|           |      |

ILLINOIS DEPARTMENT OF TRANSPORTATION  
SUMMARY OF QUANTITIES

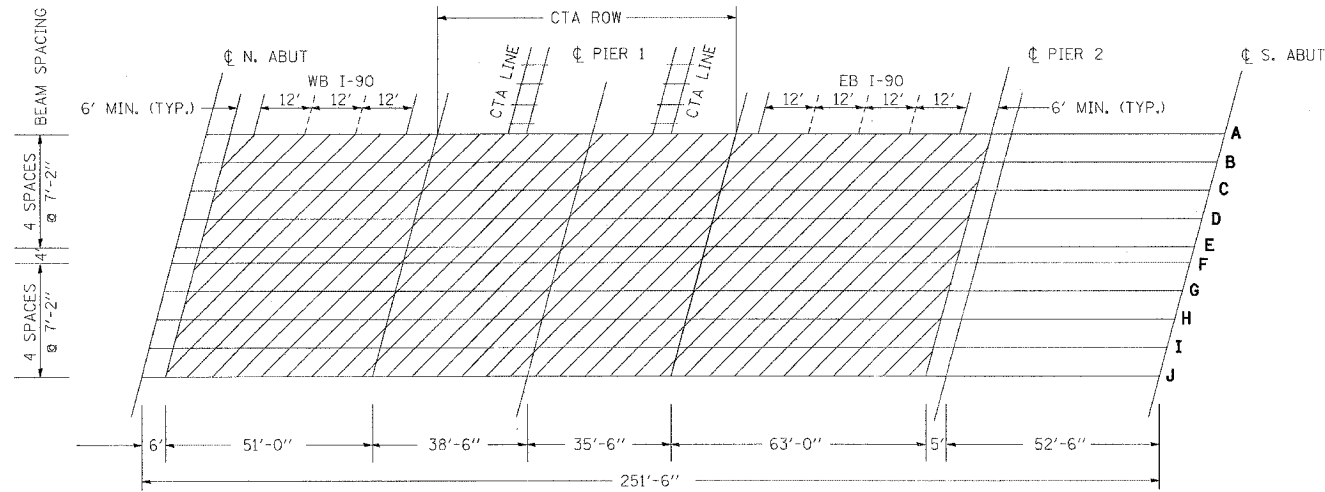
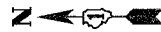
Rev.

PLOT DATE: 5/26/2005

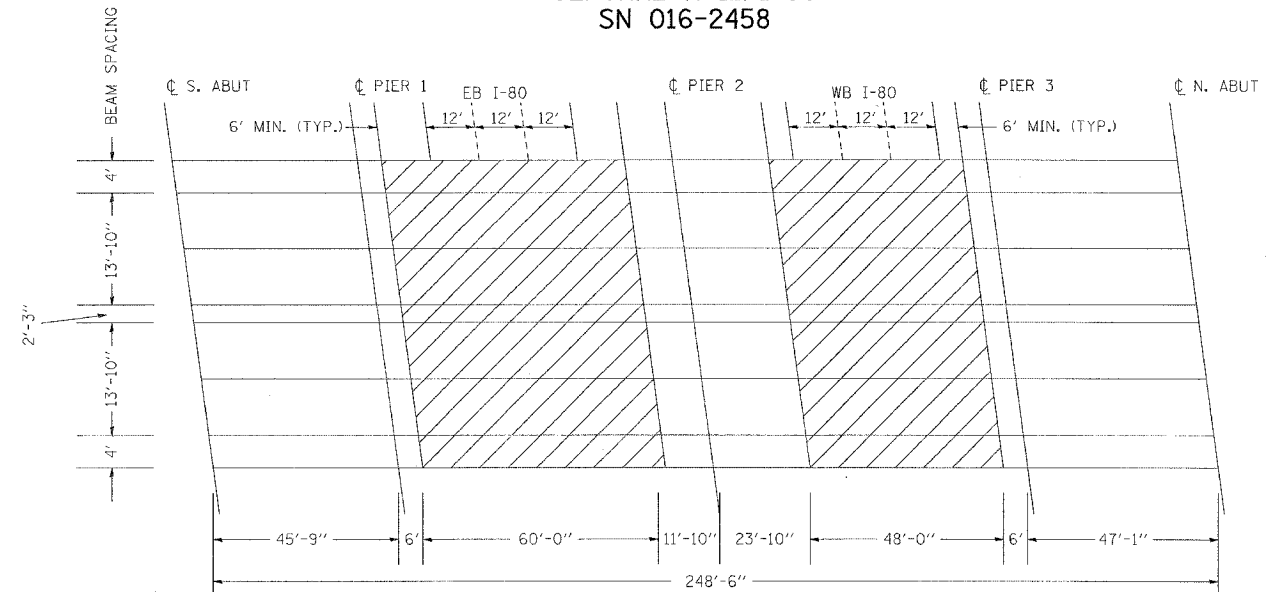
5/26/2005 10:51:00 AM

|                     |           |                           |              |           |
|---------------------|-----------|---------------------------|--------------|-----------|
| F.A. RTE.           | SECTION   | COUNTY                    | TOTAL SHEETS | SHEET NO. |
| VAR.                | 2005-019I | COOK                      | 9            | 5         |
| STA.                |           | TO STA.                   |              |           |
| FED. ROAD DIST. NO. |           | ILLINOIS FED. AID PROJECT |              |           |

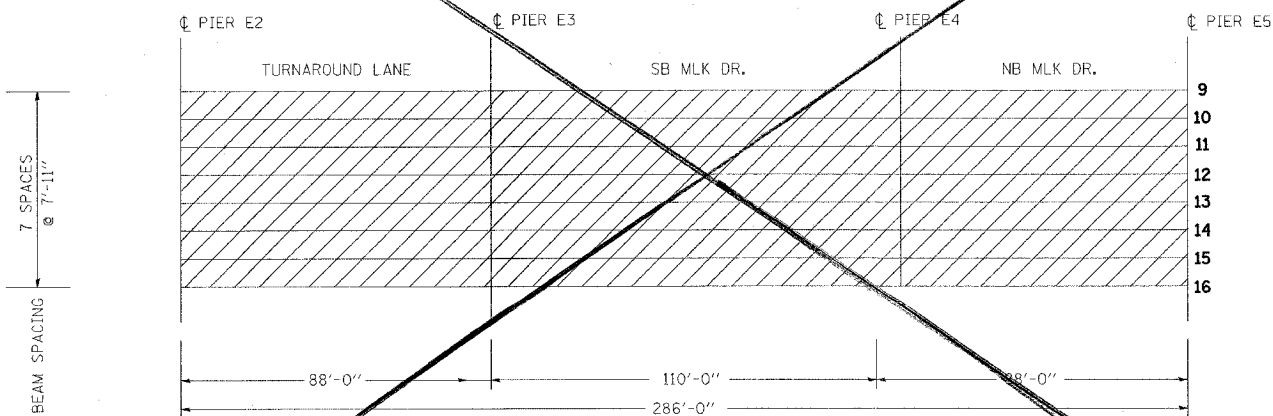
LOCATION 1  
CENTRAL AVE./I-90  
SN 016-0659



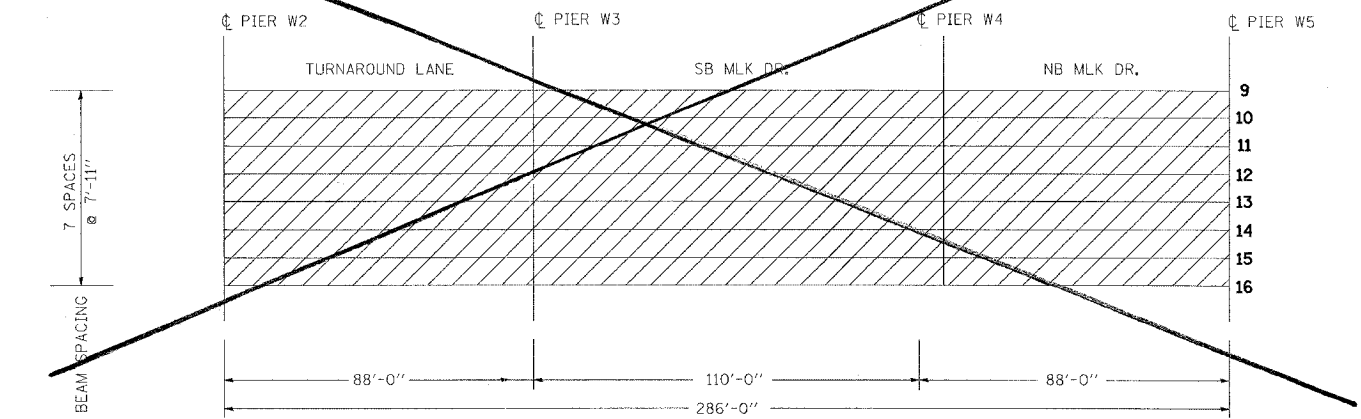
LOCATION 2  
CENTRAL AVE./I-80  
SN 016-2458



~~LOCATION 3  
I-55 EB/MARTIN LUTHER KING DR.  
SN 016-0036~~



~~LOCATION 4  
I-55 WB/MARTIN LUTHER KING DR.  
SN 016-1055~~



PLOT DATE = 5/27/2005  
 PLOT TIME = 10:58:11 AM  
 PLOT SCALE = 1/8" = 1'-0"  
 USER NAME = stonlague

| REVISIONS |      |
|-----------|------|
| NAME      | DATE |
|           |      |
|           |      |
|           |      |
|           |      |
|           |      |
|           |      |
|           |      |
|           |      |
|           |      |
|           |      |

ILLINOIS DEPARTMENT OF TRANSPORTATION

LOCATIONS 1, 2, 3 AND 4

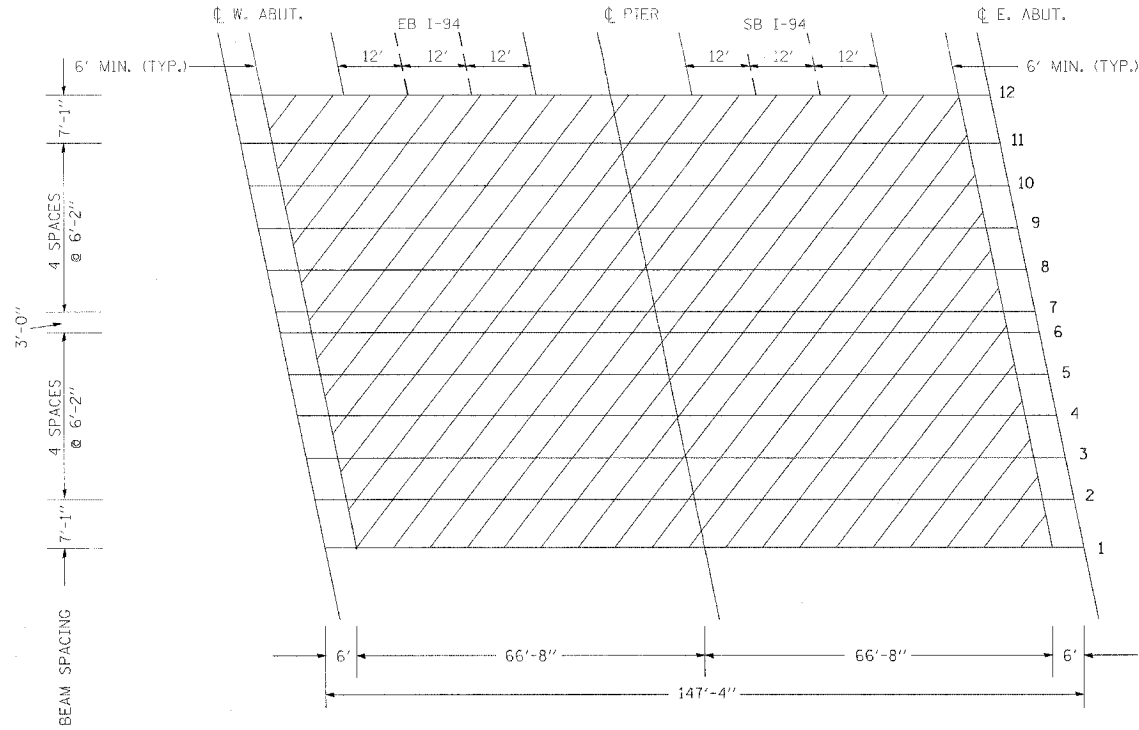
SCALE: VERT.  
HORIZ.  
DATE

DRAWN BY  
CHECKED BY

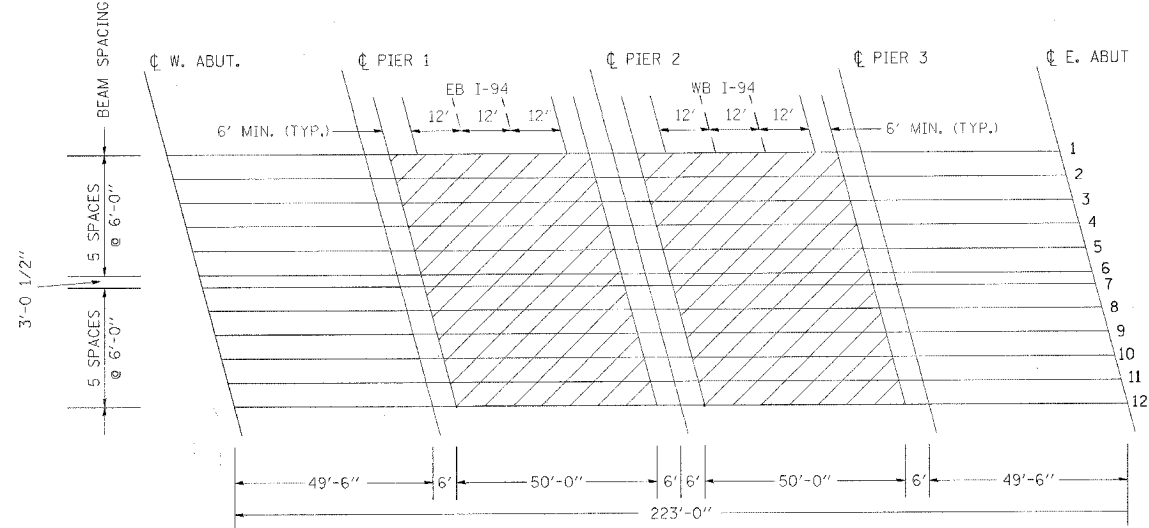
Rev.

|   |           |        |              |           |
|---|-----------|--------|--------------|-----------|
| F.A. RTE.                                     | SECTION   | COUNTY | TOTAL SHEETS | SHEET NO. |
| VAR.  | 2005-0191 | COOK   | 9            | 6         |
| STA.  | TO STA.   |        |              |           |
| FED. ROAD DIST. NO. ILLINOIS FED. AID PROJECT |           |        |              |           |

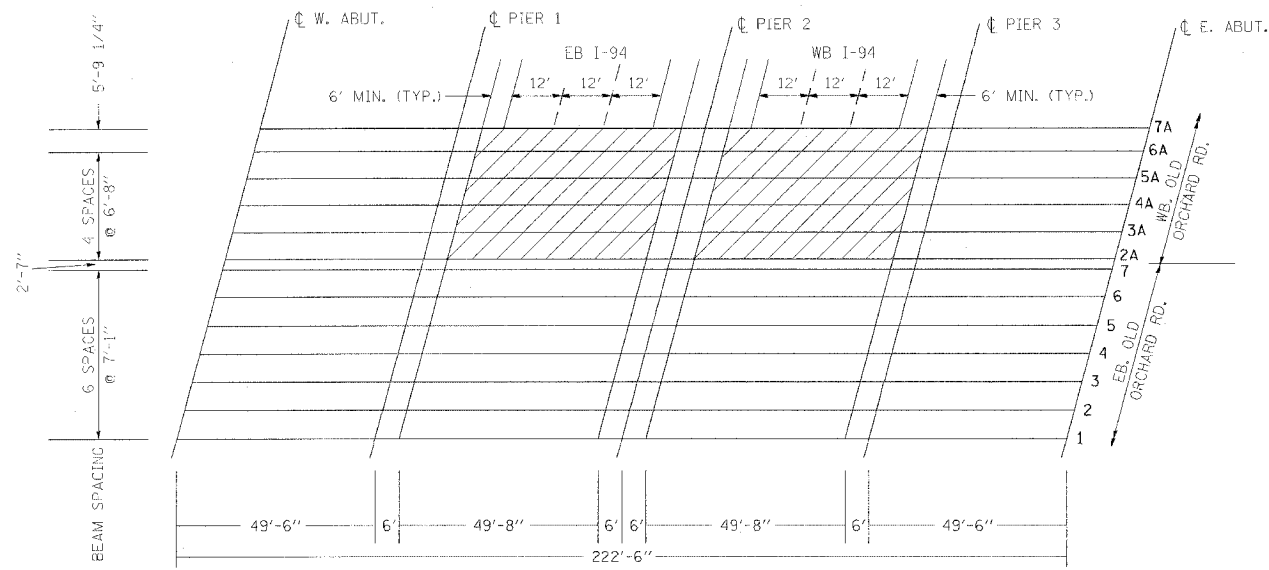
LOCATION 5  
ELSTON/I-94  
SN 016-0610



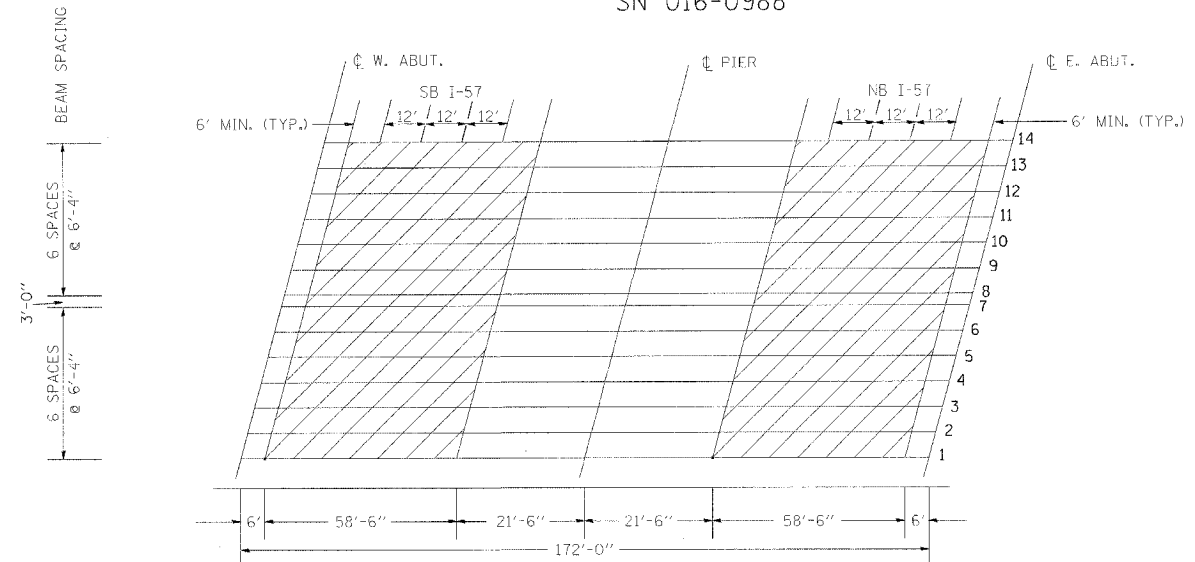
LOCATION 6  
OAKTON ST. /I-94  
SN 016-0827



LOCATION 7  
OLD ORCHARD RD. /I-94  
SN 016-0823



LOCATION 8  
112TH PL/I-57  
SN 016-0988



PLOT DATE = 6/19/2005  
FILE NAME = c:\p\proj\118305\118305.dgn  
PLOT SCALE = 1/8" = 1' / IN.  
USER NAME = stanley

| REVISIONS |      |
|-----------|------|
| NAME      | DATE |
|           |      |
|           |      |
|           |      |
|           |      |
|           |      |
|           |      |
|           |      |
|           |      |
|           |      |

ILLINOIS DEPARTMENT OF TRANSPORTATION

LOCATIONS 5, 6, 7 AND 8

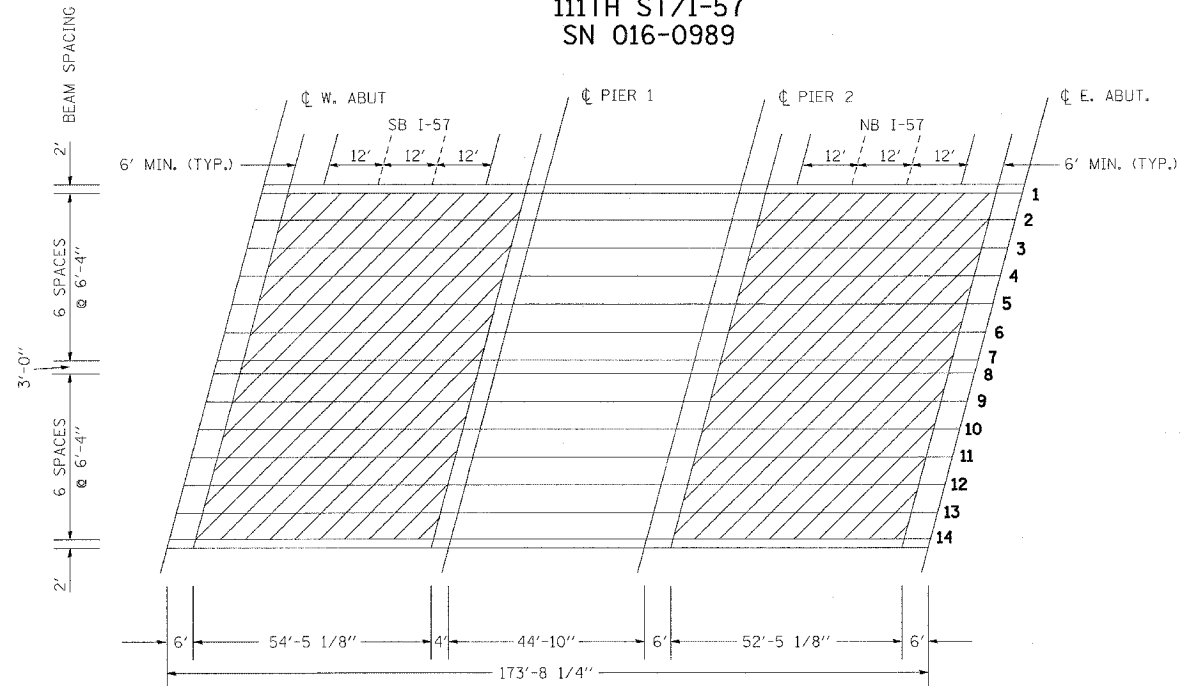
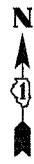
SCALE: VERT. HORIZ.  
DATE

DRAWN BY  
CHECKED BY

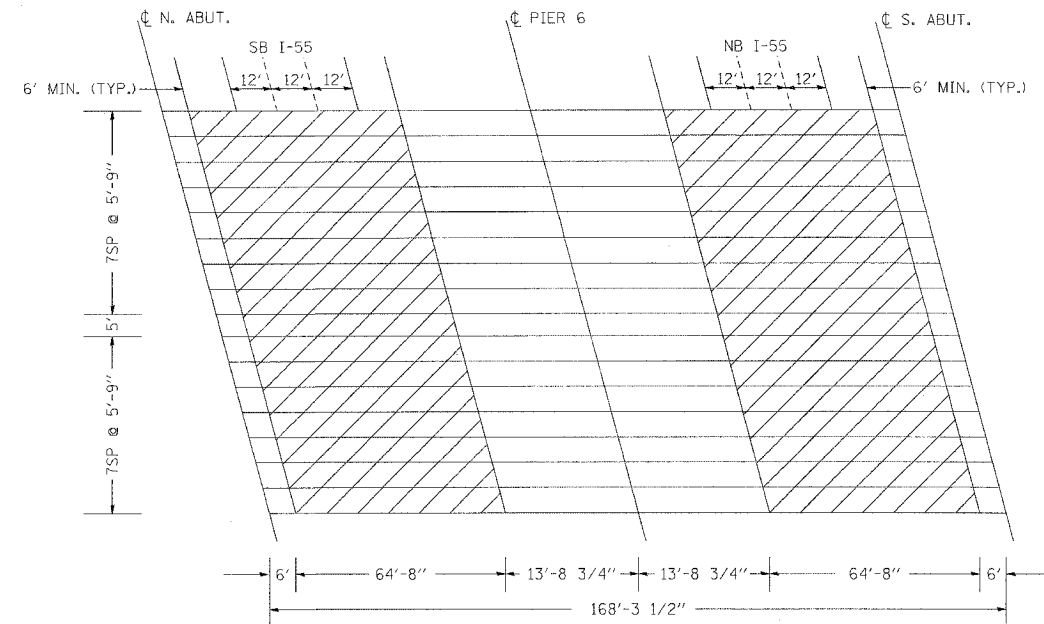
Rev.

|                     |                           |        |              |           |
|---------------------|---------------------------|--------|--------------|-----------|
| F.A. RTE.           | SECTION                   | COUNTY | TOTAL SHEETS | SHEET NO. |
| VAR.                | 2005-0191                 | COOK   | 9            | 7         |
| STA.                | TO STA.                   |        |              |           |
| FED. ROAD DIST. NO. | ILLINOIS FED. AID PROJECT |        |              |           |

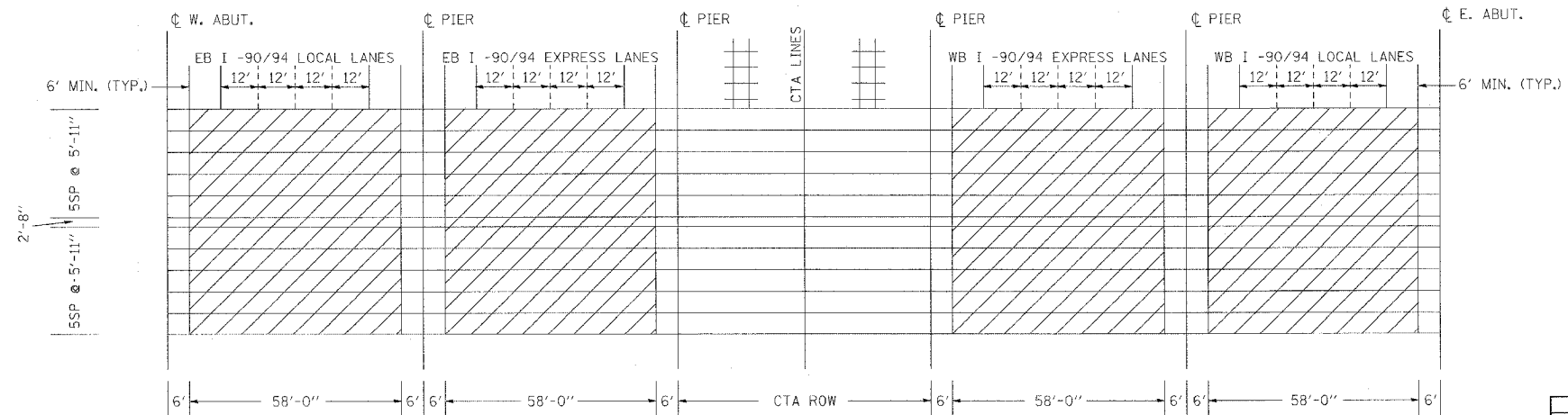
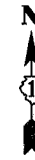
LOCATION 9  
111TH ST/I-57  
SN 016-0989



LOCATION 10  
CENTRAL/I-55  
SN 016-0724



LOCATION 11  
ROOT ST/I-90/94  
SN 016-1154



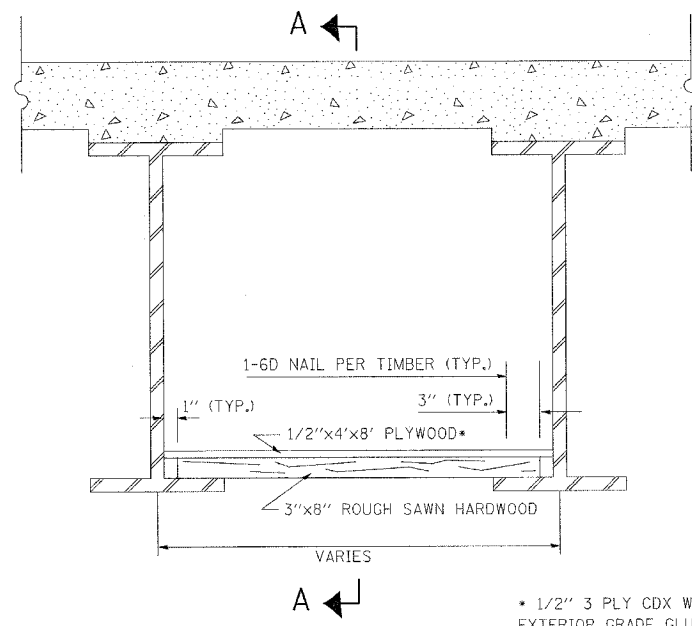
| REVISIONS |      |
|-----------|------|
| NAME      | DATE |
|           |      |
|           |      |
|           |      |
|           |      |
|           |      |
|           |      |
|           |      |
|           |      |
|           |      |

ILLINOIS DEPARTMENT OF TRANSPORTATION

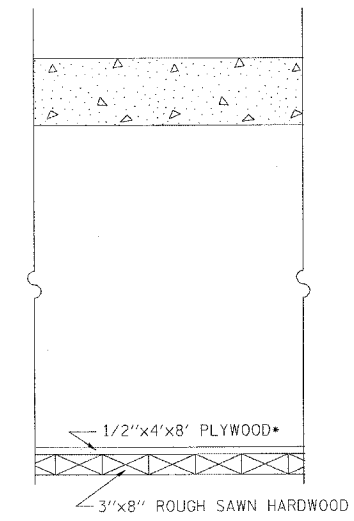
LOCATIONS 9, 10 AND 11

SCALE: VERT. DATE  
HORIZ. DRAWN BY  
CHECKED BY

|                     |           |                           |              |           |
|---------------------|-----------|---------------------------|--------------|-----------|
| F.A. RTE.           | SECTION   | COUNTY                    | TOTAL SHEETS | SHEET NO. |
| VAR.                | 2005-019I | COOK                      | 9            | 8         |
| STA.                |           | TO STA.                   |              |           |
| FED. ROAD DIST. NO. |           | ILLINOIS FED. AID PROJECT |              |           |



\* 1/2" 3 PLY CDX WITH EXTERIOR GRADE GLUE



SECTION A-A

PLOT DATE = 5/26/2005  
 FILE NAME = c:\projects\118395\118395.dgn  
 PLOT SCALE = 50.0000 / IN.  
 USER NAME = stonlager

| REVISIONS |      |
|-----------|------|
| NAME      | DATE |
|           |      |
|           |      |
|           |      |
|           |      |
|           |      |
|           |      |
|           |      |
|           |      |
|           |      |
|           |      |

ILLINOIS DEPARTMENT OF TRANSPORTATION

PERMANENT PROTECTIVE SHIELD  
 DETAILS

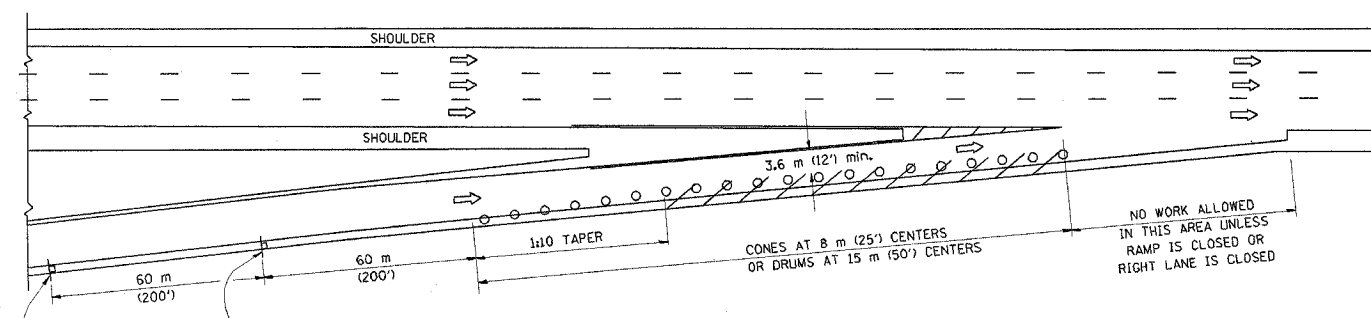
SCALE: VERT.      DRAWN BY  
 HORIZ.              CHECKED BY  
 DATE



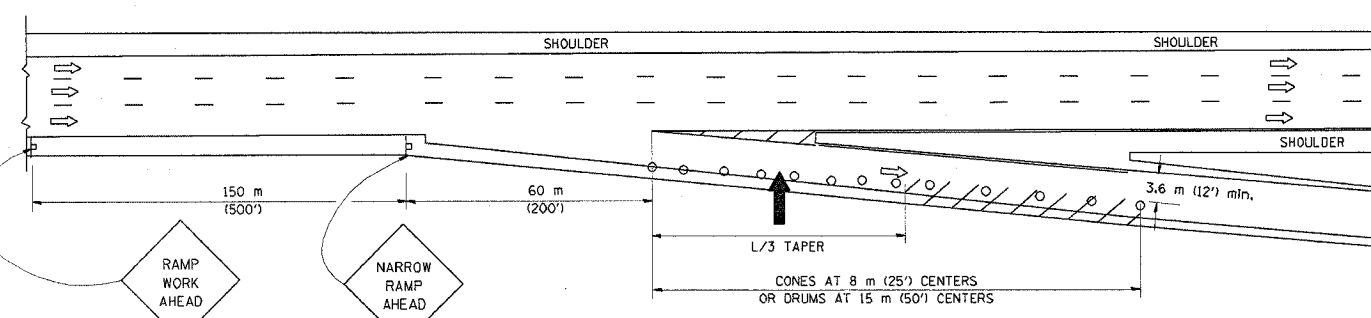
### PARTIAL RAMP CLOSURE DETAILS

### SHOULDER CLOSURE DETAILS

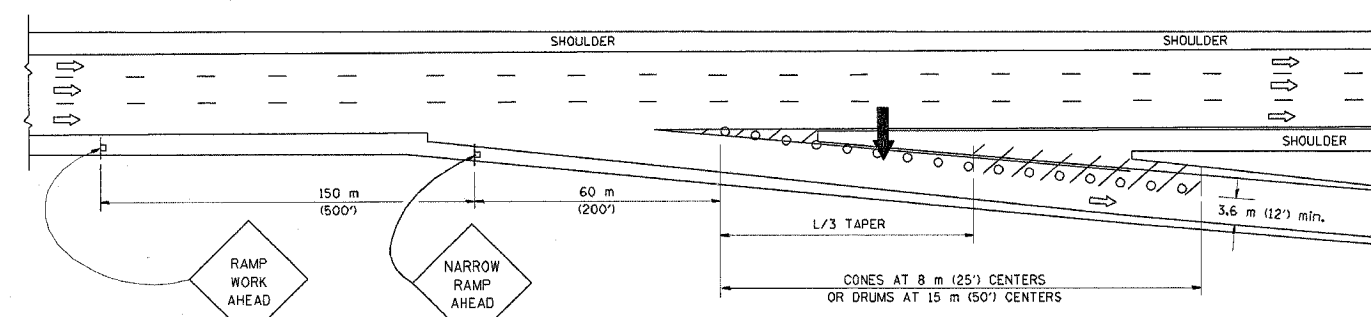
|                     |                           |        |              |           |
|---------------------|---------------------------|--------|--------------|-----------|
| F.A. RTE.           | SECTION                   | COUNTY | TOTAL SHEETS | SHEET NO. |
|                     |                           |        | 9            | 9         |
| STA.                | TO STA.                   |        |              |           |
| FED. ROAD DIST. NO. | ILLINOIS FED. AID PROJECT |        |              |           |



TYPICAL ENTRANCE RAMP



TYPICAL EXIT RAMP



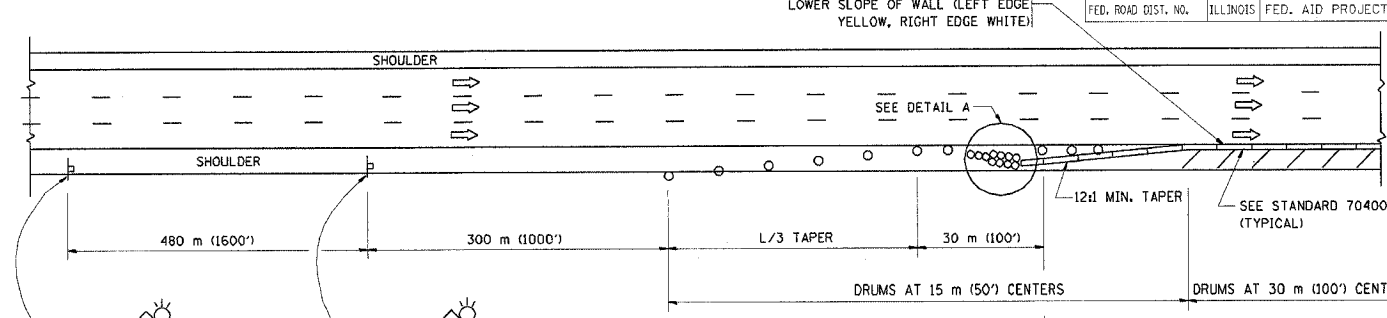
TYPICAL EXIT RAMP

**SYMBOLS**

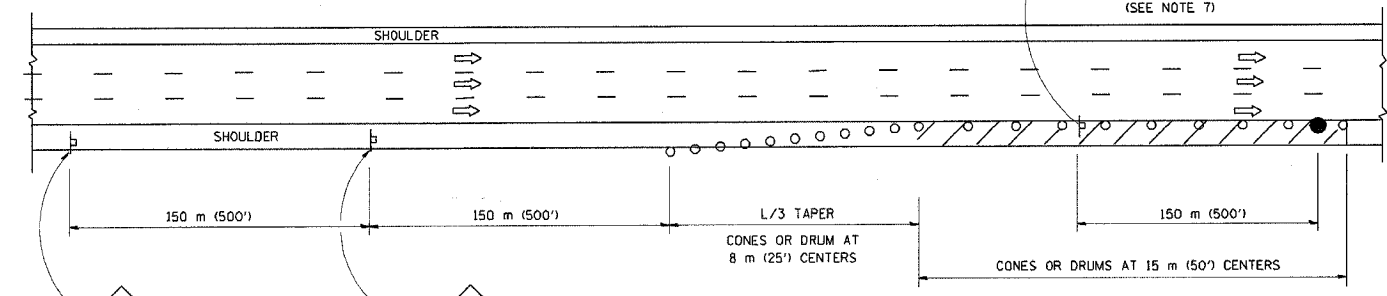
- ARROWBOARD
- WORK AREA
- SIGN ON PORTABLE OR PERMANENT SUPPORT
- FLAGGER WITH CONTROL SIGN
- DRUM WITH MONO-DIRECTIONAL STEADY BURNING LIGHT
- CONES - 700 (28) IN HEIGHT

**GENERAL NOTES**

- THE "L" DISTANCE EQUALS:  
SPEED LIMIT FORMULAS  
80 km/h (45 mph) METRIC ENGLISH  
OR GREATER:  $L=0.65(W)(S)$   $L=(W)(S)$   
W = WIDTH OF OFFSET IN METERS (FEET)  
S = NORMAL POSTED SPEED KM/H (MPH)
- PLASTIC DRUMS WITH HIGH PERFORMANCE REFLECTIVE SHEETING AND STEADY BURNING LIGHTS ARE REQUIRED FOR ALL NIGHTTIME CLOSURES.
- ALL SIGNS SHALL BE POST MOUNTED IF THE CLOSURE TIME EXCEEDS FOUR DAYS.
- FLASHING LIGHTS SHALL BE USED DURING THE HOURS OF DARKNESS AND SHALL BE INSTALLED ABOVE THE FIRST TWO SETS OF SIGNS.

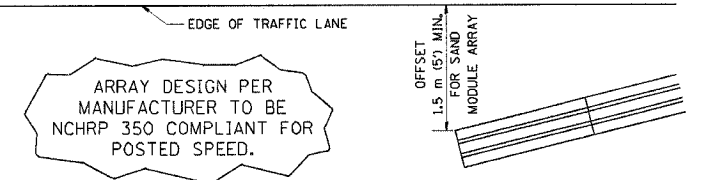


PERMANENT SHOULDER CLOSURE



DAYTIME SHOULDER CLOSURE

THIS DETAIL IS USED WHERE:  
1. VEHICLES, EQUIPMENT, WORKERS OR THEIR ACTIVITIES ENCRUCH IN AN AREA CLOSER THAN 4.5 m (15') TO THE EDGE OF PAVEMENT FOR A PERIOD IN EXCESS OF 15 MINUTES.



DETAIL "A"  
IMPACT ATTENUATOR, TEMPORARY  
(SEE NOTE 5)

- THE IMPACT ATTENUATOR, TEMPORARY IS NOT REQUIRED WHEN THE TEMPORARY CONCRETE BARRIER WALL IS OUTSIDE THE CLEAR ZONE OR IS TIED INTO THE EXISTING GUARDRAIL. IF OFFSET IS LESS THAN 5 FEET USE "TRAFFIC BARRIER TERMINAL, TYPE III, TEMPORARY" DEVICE TO MEET NCHRP350 FOR POSTED SPEED.
- AUTHORIZATION FROM THE DISTRICT'S BUREAU OF TRAFFIC IS REQUIRED FOR ALL FREEWAY CLOSURES.
- THE FLAGGER AND FLAGGER SIGN ARE REQUIRED AT THE ABOVE WORK SITES WHEN:
  - FOUR OR MORE WORK VEHICLES ENTER THE TRAFFIC LANES IN A ONE HOUR PERIOD.
  - THE WORK ACTIVITY REQUIRES FREQUENT ENCRUCHMENT INTO THE LANE OPEN TO TRAFFIC.
 THE FLAGGER SHALL BE STATIONED APPROXIMATELY 30 m (100') TO 60 m (200') IN ADVANCE OF THE WORKERS.

ALL DIMENSIONS ARE IN MILLIMETERS (INCHES) UNLESS OTHERWISE SHOWN.  
ILLINOIS DEPARTMENT OF TRANSPORTATION

| REVISIONS |       |
|-----------|-------|
| NAME      | DATE  |
| DWS       | 11/96 |
| JAF       | 12/02 |
| NCHRP 350 | 04/03 |

**TRAFFIC CONTROL DETAILS FOR FREEWAY SHOULDER CLOSURES PARTIAL RAMP CLOSURES**

SCALE: NONE  
DATE: 05/06/2003  
DRAWN BY: DWS  
DESIGNED BY: DWS  
CHECKED BY:  
TC-17