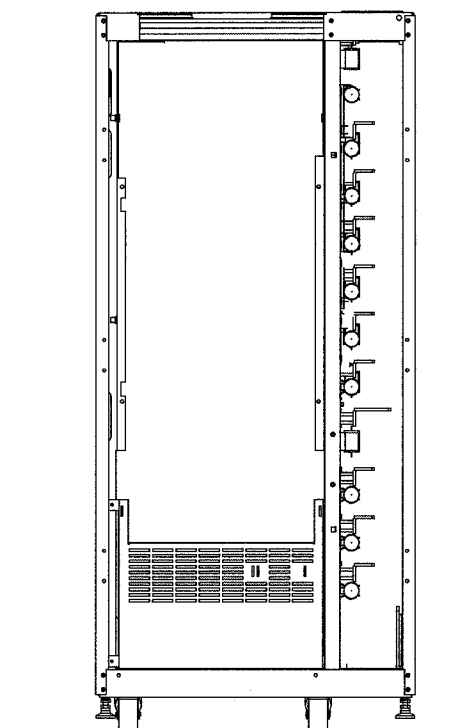


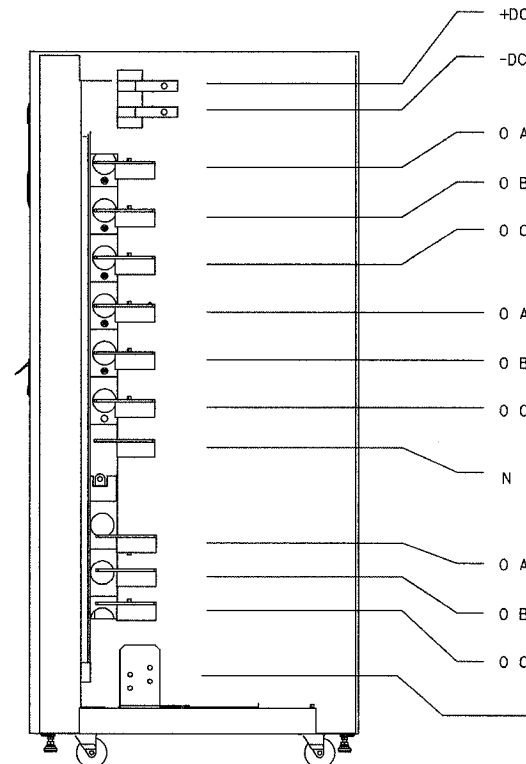
SECTION	COUNTY	TOTAL SHEETS	SHEET NO.
2005-0201	COOK	16	14
STA.	TO STA.		
FED. ROAD DIST. NO.	ILLINOIS	FED. AID PROJECT	
62947			

NOTES:

1. ALL DIMENSIONS ARE IN INCHES.
2. TOP AND BOTTOM CABLE ENTRY AVAILABLE THROUGH REMOVABLE ACCESS PLATES. REMOVE, PUNCH TO SUIT CONDUIT SIZE, AND REPLACE.
3. CONTROL WIRING AND POWER WIRING MUST BE RUN IN SEPARATE CONDUIT. OUTPUT CABLES MUST BE RUN IN A SEPARATE CONDUIT FROM INPUT CABLES.
4. ALUMINUM AND COPPER CLAD ALUMINUM CABLES ARE NOT RECOMMENDED.
5. ALL WIRING IS TO BE IN ACCORDANCE WITH NATIONAL AND LOCAL ELECTRICAL CODES.

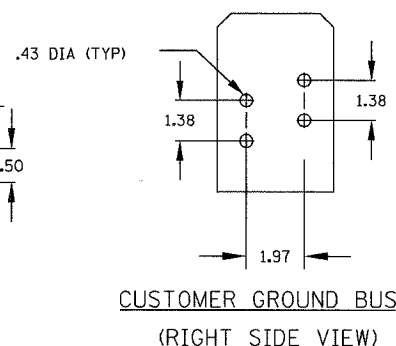
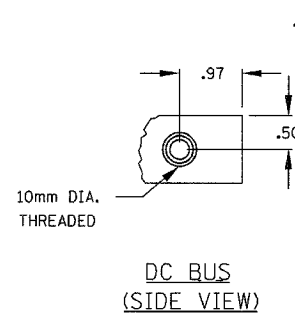
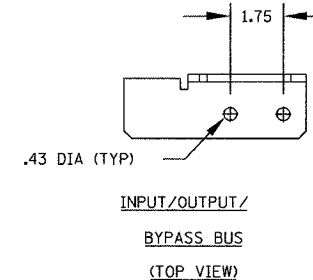
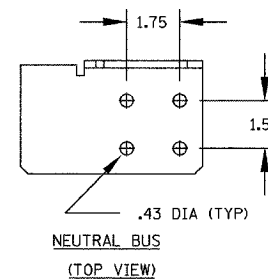


FRONT VIEW
(WITH FRONT PANELS REMOVED)



RIGHT SIDE VIEW
(WITH SIDE PANEL REMOVED)

- +DC BATTERY CABLE CONNECTIONS
MAX (1) 500 kcmil
- DC
- 0 A AC INPUT CABLE CONNECTIONS
MAX (2) 500 kcmil
- 0 B
- 0 C
- 0 A BYPASS AC INPUT CABLE CONNECTIONS
MAX (2) 500 kcmil (DUAL INPUT ONLY)
- 0 B
- 0 C
- N NEUTRAL CABLE CONNECTIONS
- 0 A AC OUTPUT CABLE CONNECTIONS
MAX (2) 500 kcmil
- 0 B
- 0 C
- GROUND BUS CONNECTIONS



UPS-07

Edwards AND Kelcey
ONE NORTH FRANKLIN
CHICAGO, IL 60606
PHONE: (312) 251-3000
FAX: (312) 251-3015
WEB: WWW.EKCORP.COM

REVISIONS	
NAME	DATE

ILLINOIS DEPARTMENT OF TRANSPORTATION
F.A.I. 94/90 (DAN RYAN EXPRESSWAY)
31st STREET to I-57
TERMINAL DETAILS
40 KVA UPS MODULE

SCALE: NOT TO SCALE
DATE: SEPTEMBER 23, 2005
DRAWN BY: JM
CHECKED BY: CS

P: 030019.035 Nls voad contract 62947 ups02007 2a.sht 07/06/2005 11:34:4 AM