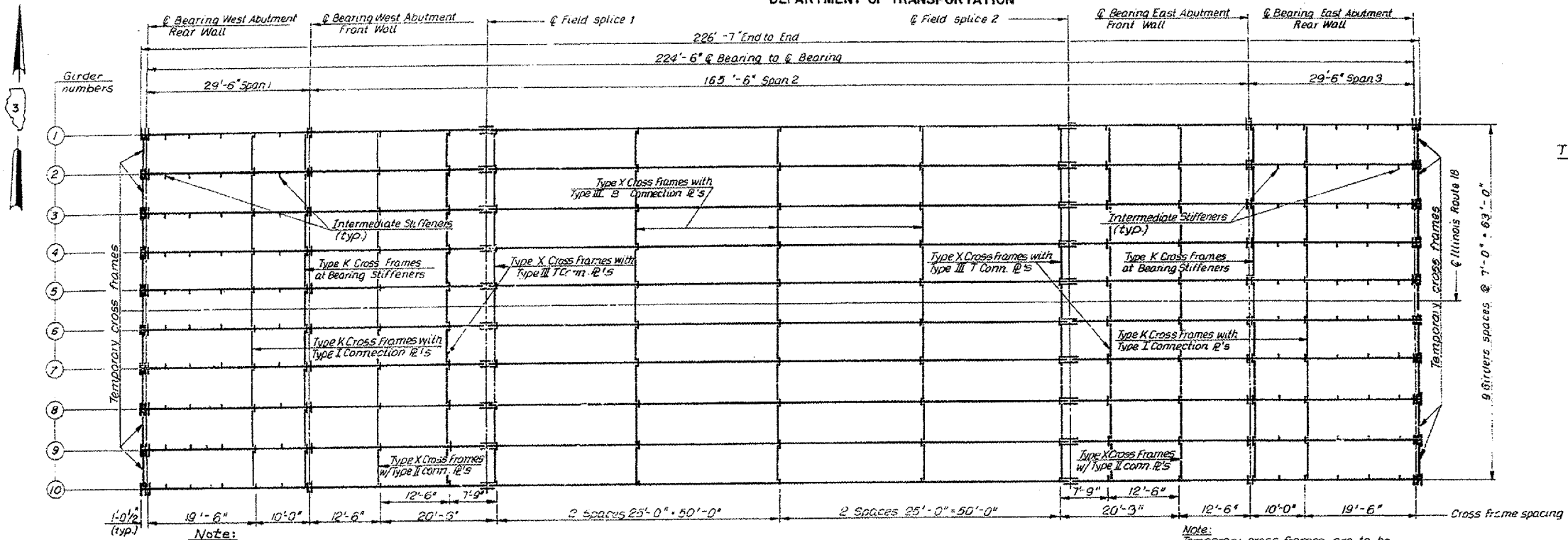


F.A.I. RTE.	SECTION	COUNTY	TOTAL SHEETS	SHEET NO.
412	5011HB-2,1HB1BP	LASALLE	17	15
ILLINOIS				

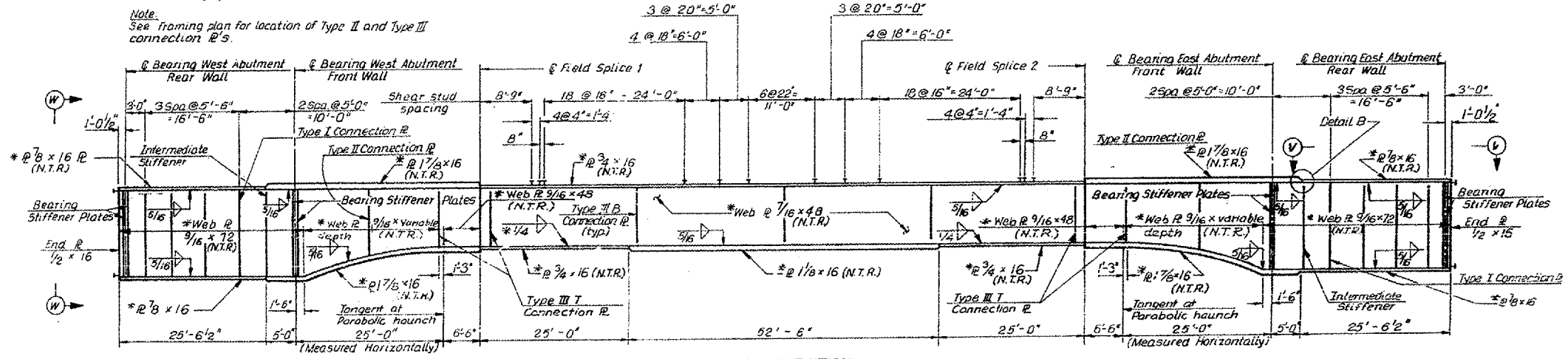
STATE OF ILLINOIS  
DEPARTMENT OF TRANSPORTATION



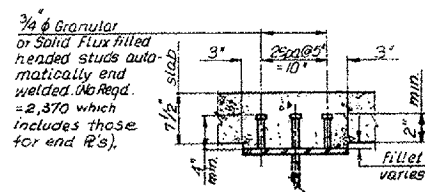
**Note:**  
All structural steel fabricators performing work on the main load carrying components of steel structures shall be certified under Category III (AISC) of the Quality Certification Program.

**FRAMING PLAN**

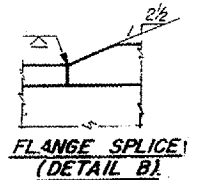
**Note:**  
Temporary cross frames are to be placed during steel erection and removed after slab has cured.



**GIRDER ELEVATION**

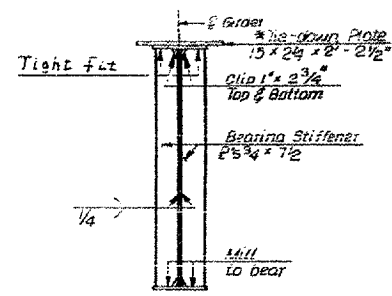


**SHEAR STUDS**

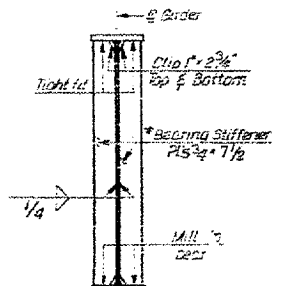


**FLANGE SPLICE (DETAIL B)**

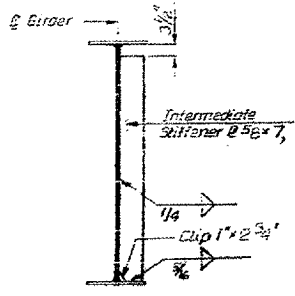
**Notes:**  
For View V, and End View W-W, see Dwg. No. I-II  
See Dwg. I-II for connection details  
N.T.R. indicates notch toughness requirement. See General Notes.  
\* Indicates M223, Gr. 50 Steel



**BEARING STIFFENER AT REAR WALL**



**BEARING STIFFENER AT FRONT WALL**



**INTERMEDIATE STIFFENER**

REVISIONS	
NAME	DATE

ILLINOIS DEPARTMENT OF TRANSPORTATION  
**EXISTING STRUCTURE PLANS  
FOR INFORMATION ONLY**  
**BRIDGE LOCATION 2**  
**S.N. 050-0215**  
SCALE: VERT.      DRAWN BY RW  
          HORIZ.      CHECKED BY  
DATE 04/18/05

Date: 04/18/05  
Project: cv/projects/cmain05/cm3078/details.dgn