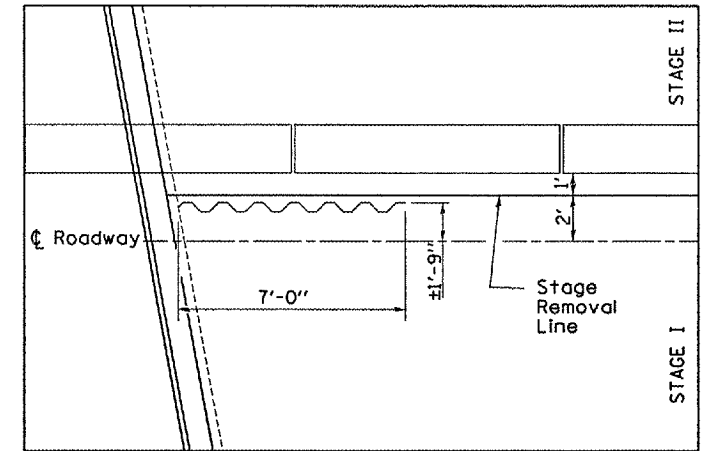
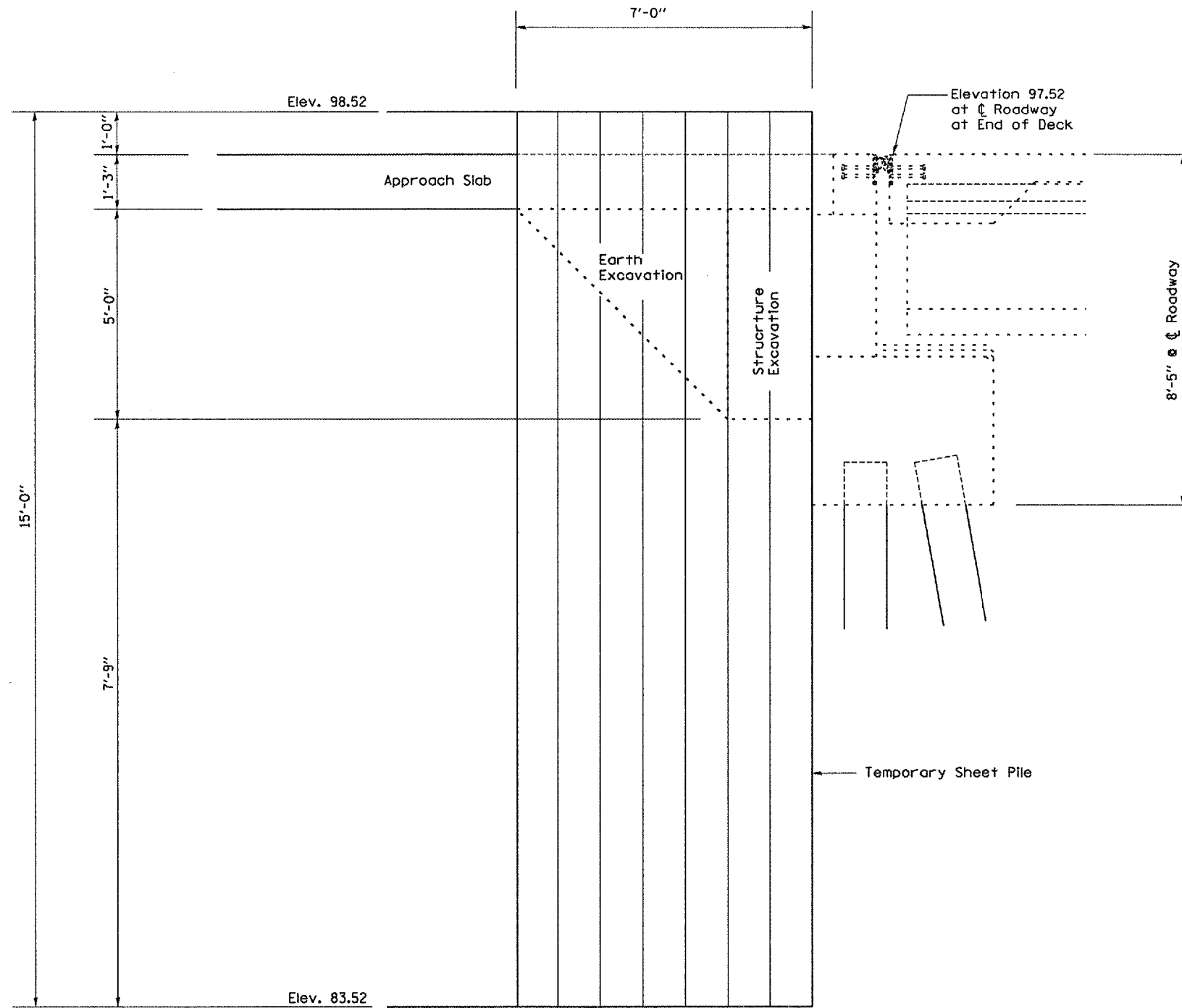
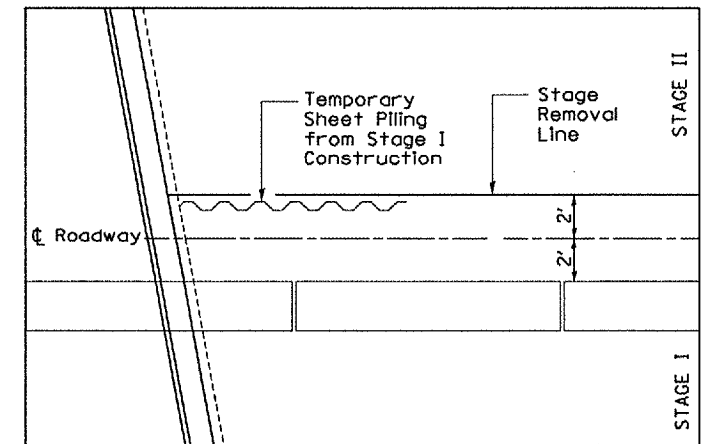


F.A.I. RTE.	SECTION	COUNTY	TOTAL SHEETS	SHEET NO.
412	(62-2VB)I	MARSHALL	19	7
FED. ROAD DIST. NO.	ILLINOIS	PROJECT		

BM #1 Northwest quadrant of North abutment of S.N. 062-0051 (SB) Chisled "□" Elev. 100.00



DETAIL "A"  
STAGE I



DETAIL "B"  
STAGE II

Date: 04/26/2005  
File: c:\projects\main06\cm308\details.dgn

REVISIONS	
NAME	DATE

ILLINOIS DEPARTMENT OF TRANSPORTATION

TEMPORARY SHEET PILE DETAILS  
FAI 412 (I-39)  
SECTION (62-2VB)I  
STA. 165+90.23  
MARSHALL COUNTY

SCALE: VERT.  
HORIZ.  
DATE 04/26/2005

DRAWN BY RLW  
CHECKED BY