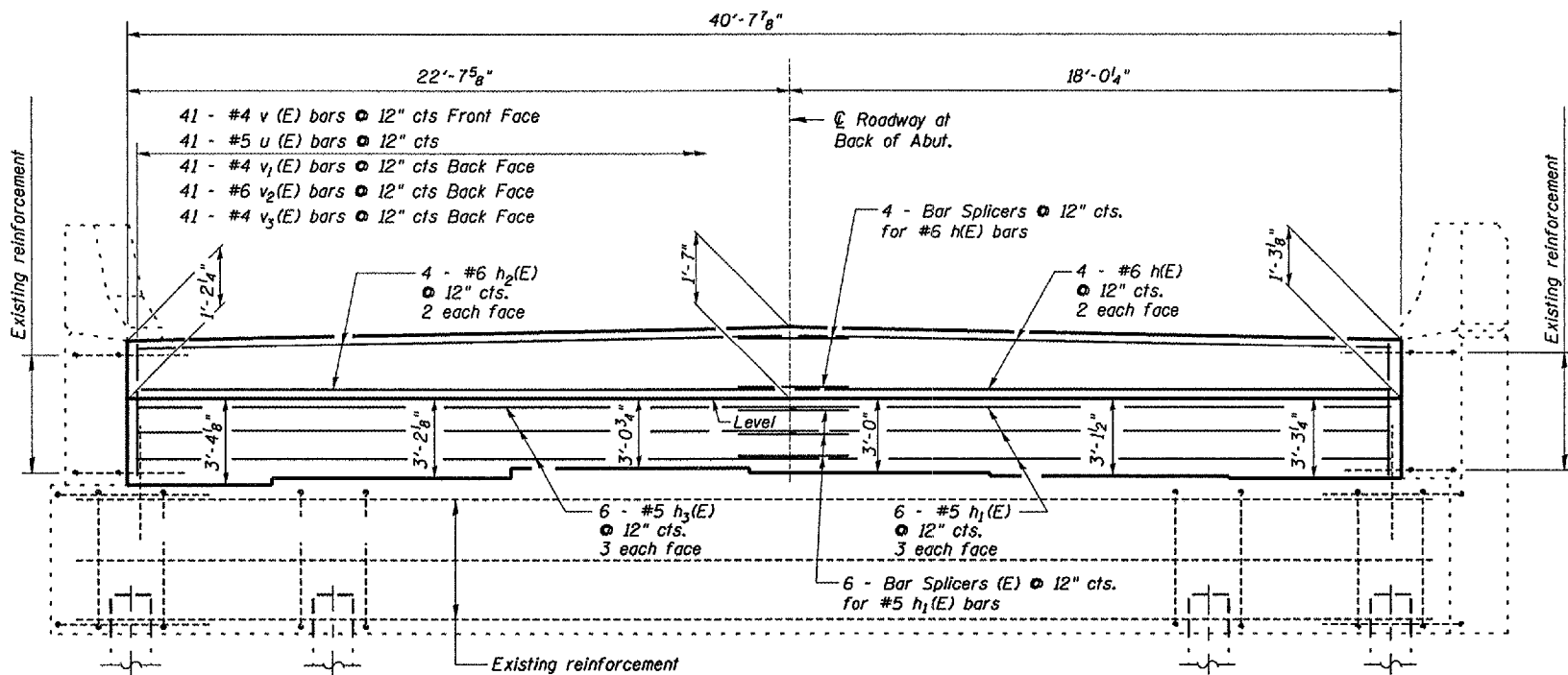


F.A.I. RTE.	SECTION	COUNTY	TOTAL SHEETS	SHEET NO.
412	(62-2VB)	MARSHALL	19	9
FED. ROAD DIST. NO. - ILLINOIS PROJECT				



ELEVATION

GENERAL NOTES

Furnish steel plates in segments of 20 feet maximum length. Maximum space between installed segments shall be 3/16". Seal space with silicone sealant, suitable for structural steel.

All structural steel shall conform to AASHTO Classification M-270 Gr. 36, unless otherwise noted.

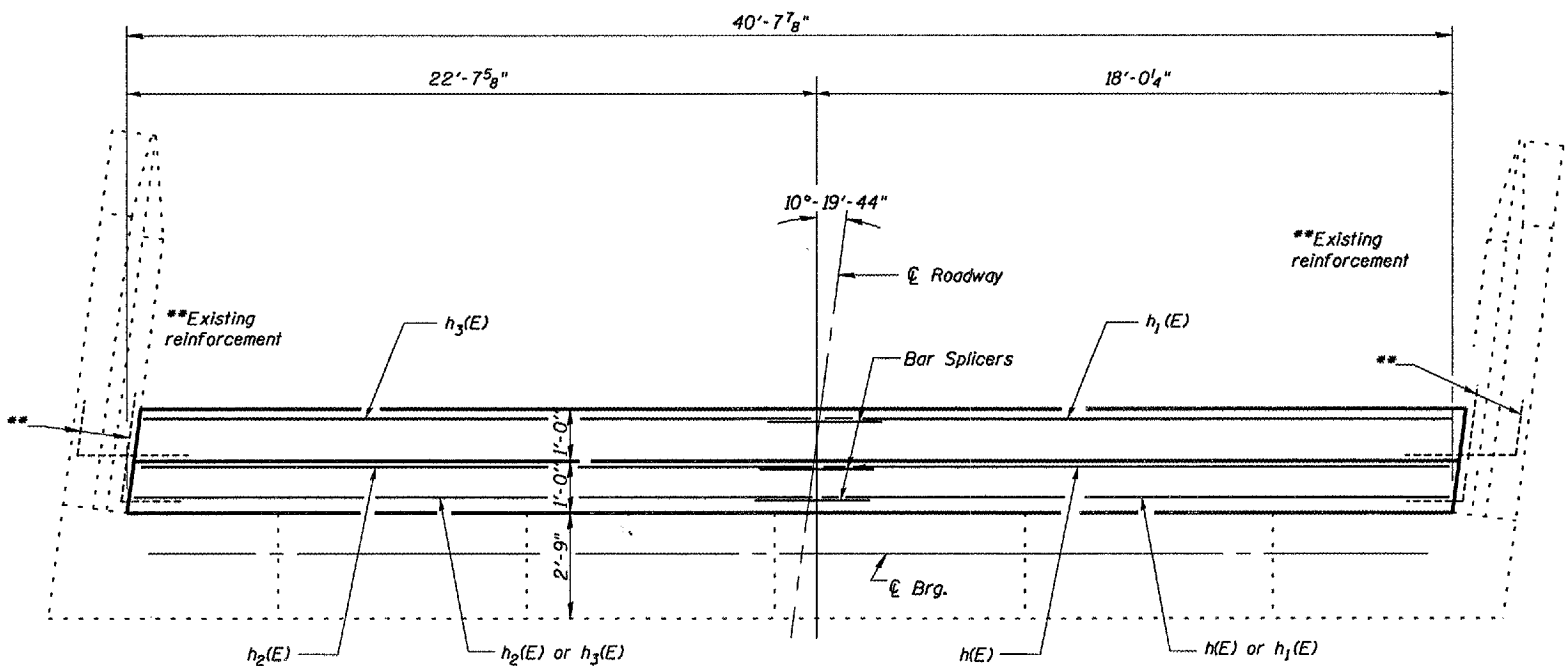
Expansion joint plates and attached bars shall be shop painted with the inorganic zinc rich primer.

Calculated weight of Structural Steel = 824 Pounds

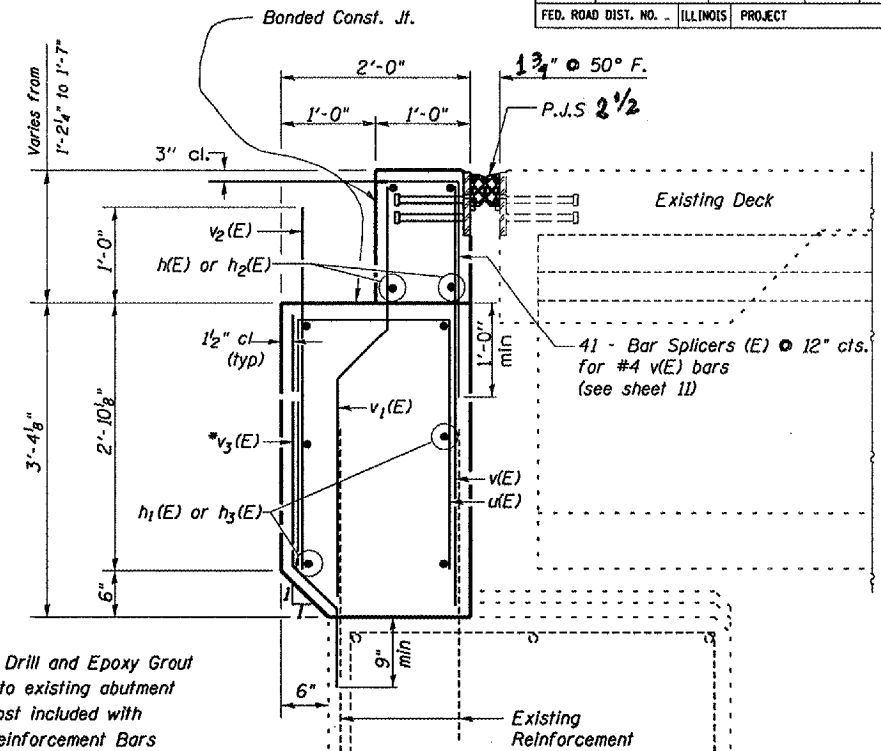
Roadway expansion guards shall be assembled in the proper position with the ends in place and shall be left assembled for shop inspection.

Reinforcement bars shall conform to the requirements of AASHTO M 31 or M 322 Grade 60.

The roadway expansion plates shall be flame cut as provided in Article 505.04(k) of the Standard Specifications.



PLAN VIEW

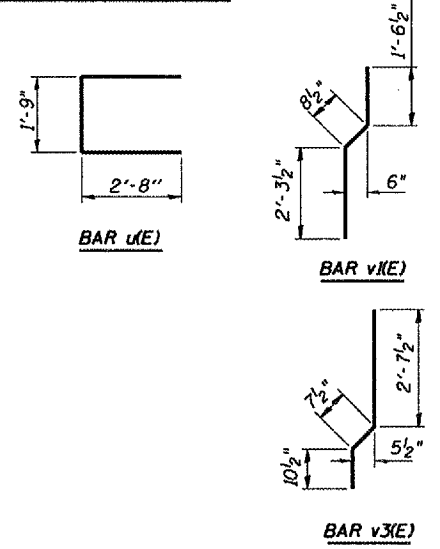


ABUTMENT SECTION

ABUTMENT BILL OF MATERIAL

BAR	NO.	SIZE	LENGTH	SHAPE
h(E)	4	#6	18'-0"	—
h1(E)	6	#5	18'-0"	—
h2(E)	4	#6	22'-0"	—
h3(E)	6	#5	22'-0"	—
u(E)	41	#5	7'-1"	□
v(E)	41	#4	4'-1"	—
v1(E)	41	#4	4'-6"	—
v2(E)	41	#5	3'-11"	—
v3(E)	41	#4	4'-1"	—
CONCRETE REMOVAL			CU YD	10
CONCRETE STRUCTURE			CU YD	12
REINFORCEMENT BARS EPOXY COATED			POUND	1282
BAR SPLICERS			EACH	51

NOTE: Reinforcement bars designated (E) shall be Epoxy Coated



REVISIONS	NAME	DATE

ILLINOIS DEPARTMENT OF TRANSPORTATION  
 PROPOSED ABUTMENT DETAILS  
 NORTH ABUTMENT  
 FAI 412 (I-39)  
 SECTION (62-2VB)I  
 STA. 165+90.23  
 MARSHALL COUNTY  
 SCALE: VERT. DATE 04/26/2005  
 HORIZ. DRAWN BY R.L.W.  
 CHECKED BY

Date: 04/26/2005  
 File: c:\projects\main06\cm308\details.dgn