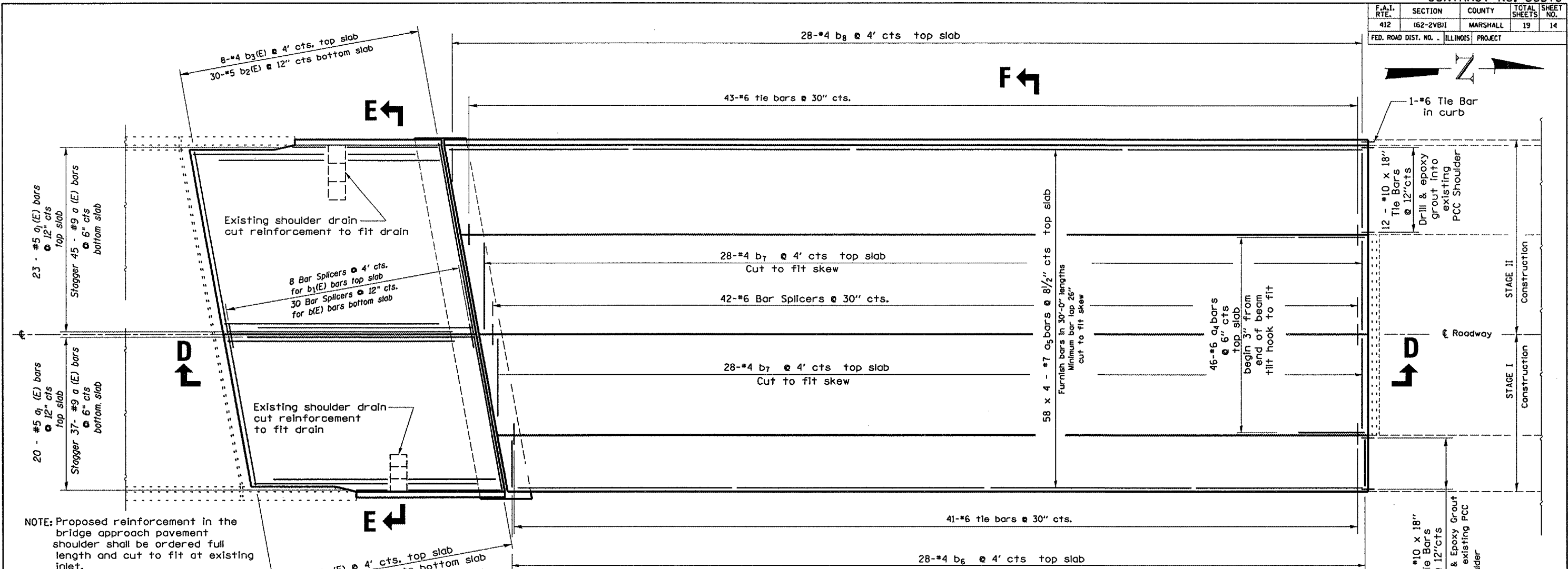


F.A.I. RTE.	SECTION	COUNTY	TOTAL SHEETS	SHEET NO.
412	(62-2VB)I	MARSHALL	19	14
FED. ROAD DIST. NO. - ILLINOIS		PROJECT		

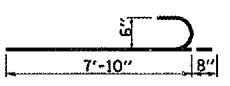
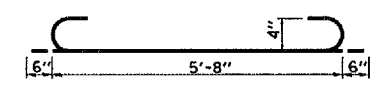
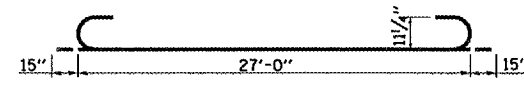


NOTE: Proposed reinforcement in the bridge approach pavement shoulder shall be ordered full length and cut to fit at existing inlet.

PLAN SHOWING REINFORCEMENT

BRIDGE APPROACH PAVEMENT CONNECTOR (PCC) REINFORCEMENT TABLE

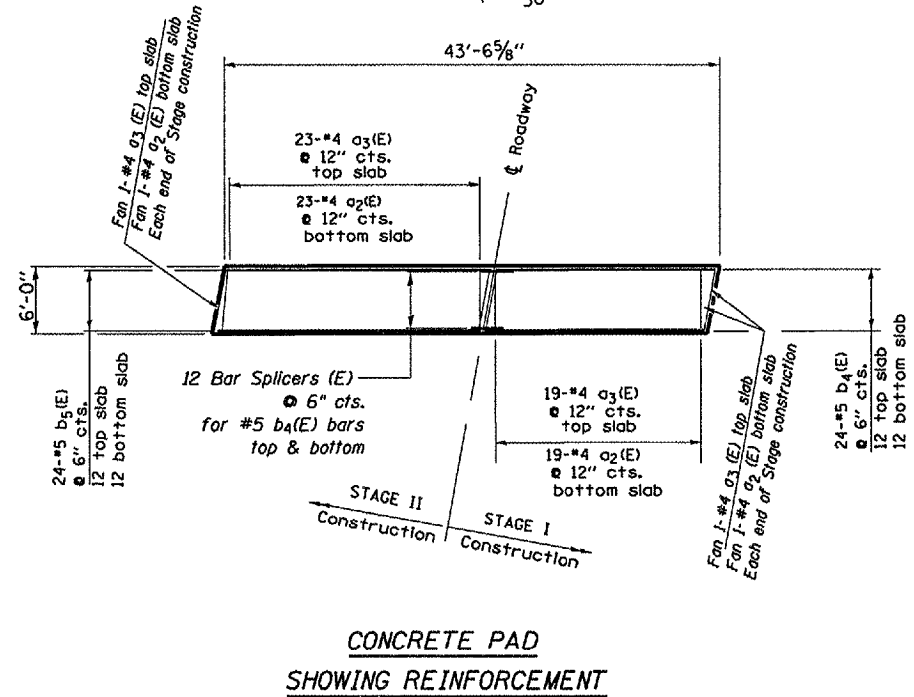
BAR	NO.	SIZE	LENGTH	SHAPE
a4	46	#6	8'-6"	
a5	232	#7	30'-0"	
a1(E)	43	#5	29'-6"	
a2(E)	44	#4	6'-8"	
a3(E)	44	#4	5'-8"	
b6	28	#4	6'-2"	
b7	56	#4	11'-8"	
b8	28	#4	10'-3"	
REINFORCEMENT BARS				15557
BAR SPLICERS				52
TIE BARS				103



BRIDGE APPROACH PAVEMENT REINFORCEMENT TABLE

BAR	NO.	SIZE	LENGTH	SHAPE
a1(E)	43	#5	29'-6"	
a2(E)	44	#4	6'-8"	
a3(E)	44	#4	5'-8"	
b(E)	30	#5	19'-3"	
b1(E)	8	#4	19'-3"	
b2(E)	30	#5	23'-3"	
b3(E)	8	#4	23'-3"	
b4(E)	24	#5	19'-5"	
b5(E)	24	#5	23'-5"	
REINFORCEMENT BARS, EPOXY COATED				12540
BAR SPLICERS				38

NOTE: Reinforcement bars designated (E) shall be Epoxy Coated. Bars indicated thus 58x4 #7 a indicates 58 lines of bars with 4 lengths per line.



CONCRETE PAD SHOWING REINFORCEMENT

* For information only. Cost included with Bridge Approach Pavement Connector (PCC).
 ** For information only. Cost included with Bridge Approach Pavement (Special)

REVISIONS	
NAME	DATE

ILLINOIS DEPARTMENT OF TRANSPORTATION
 PROPOSED APPROACH PAVEMENT
 DETAILS - NORTH APPROACH
 FAI 412 (I-39)
 SECTION (62-2VB)I
 STA. 165+90.23
 MARSHALL COUNTY
 SCALE: VERT. _____
 HORIZ. _____
 DATE 04/26/2005
 DRAWN BY RLW
 CHECKED BY _____