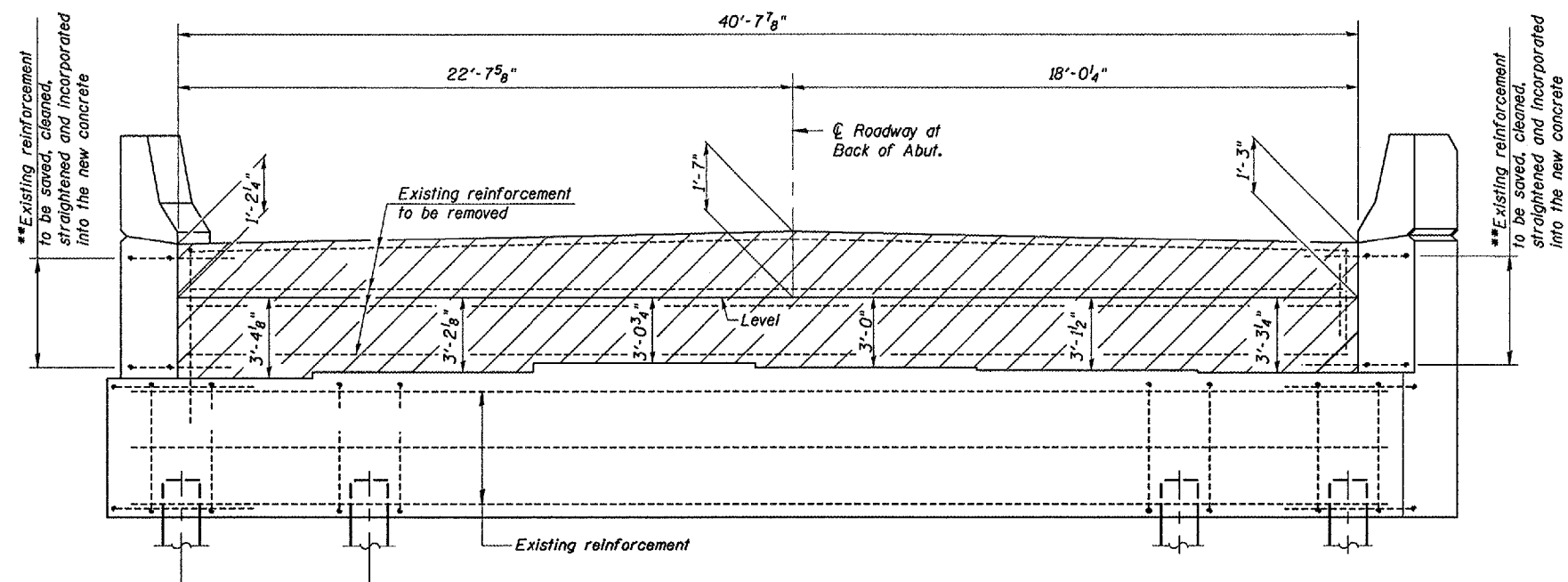
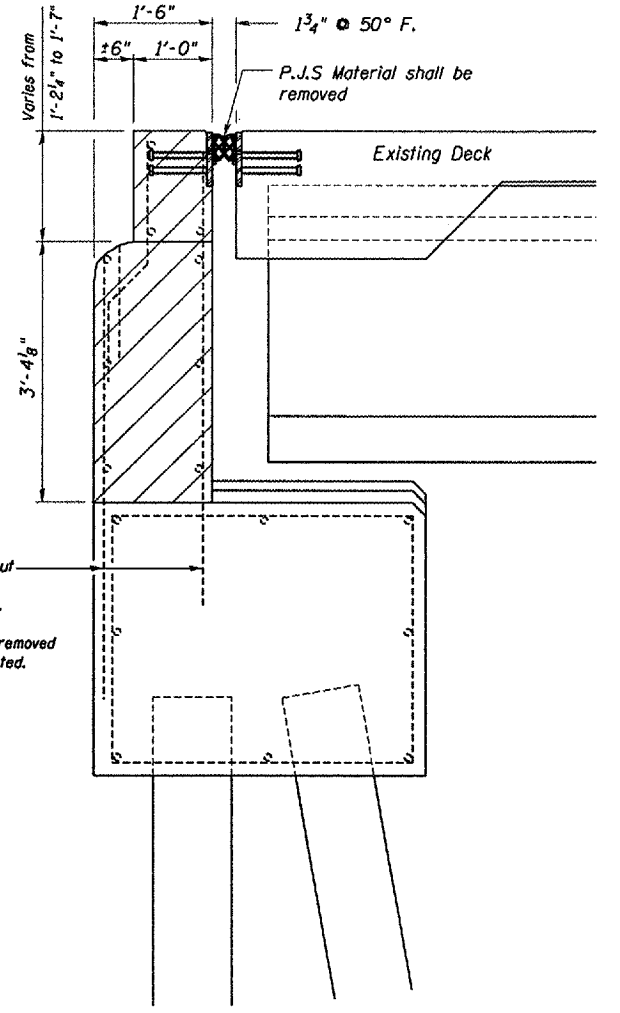


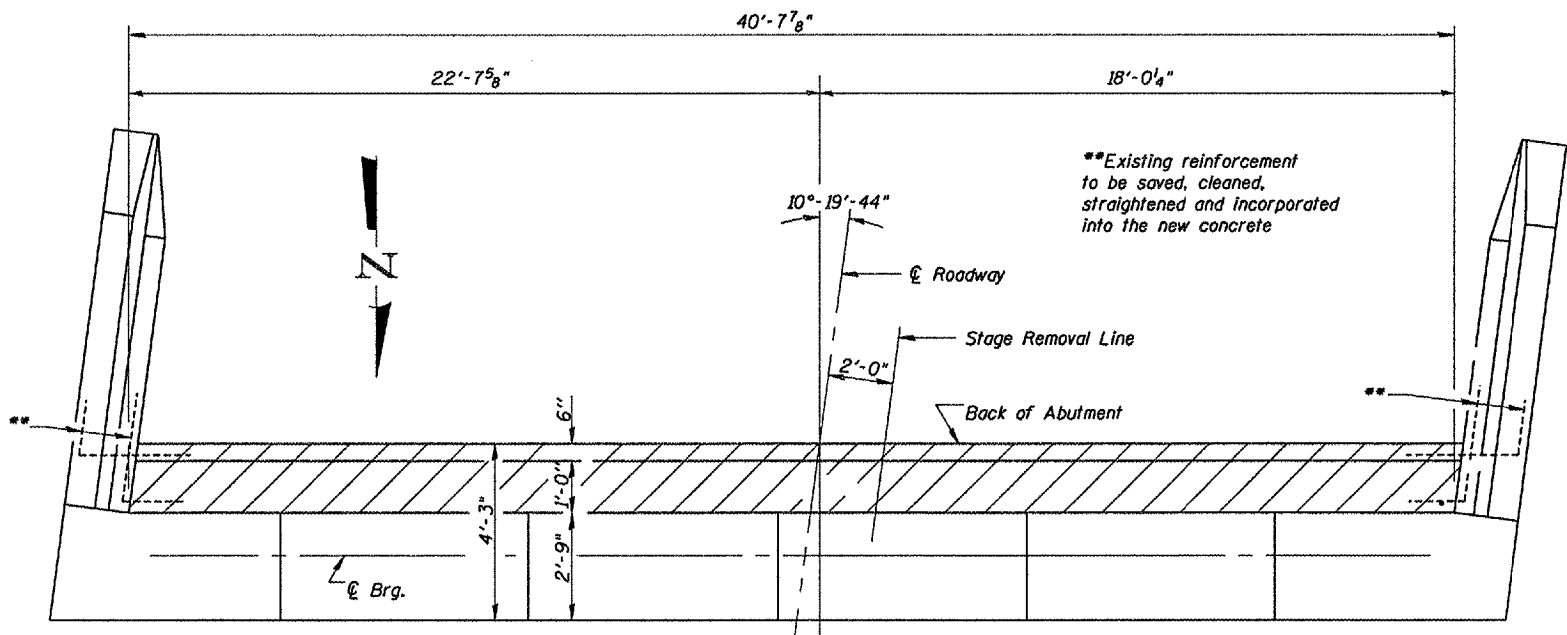
F.A.I. RTE.	SECTION	COUNTY	TOTAL SHEETS	SHEET NO.
412	(62-2VB)1-1	MARSHALL	19	8
FED. ROAD DIST. NO. .		ILLINOIS	PROJECT	



ELEVATION



ABUTMENT SECTION



PLAN VIEW

REVISIONS	
NAME	DATE

ILLINOIS DEPARTMENT OF TRANSPORTATION
EXISTING ABUTMENT DETAILS
 SOUTH ABUTMENT
 FAI 412 (I-39)
 SECTION (62-2VB)1-1
 STA. 165+90.23
 MARSHALL COUNTY

SCALE: VERT. _____
 HORIZ. _____
 DATE 04/26/2005

DRAWN BY R.L.W.
 CHECKED BY _____

Date: 05/07/2005
 File: c:\projects\main06\cm309\details.dgn