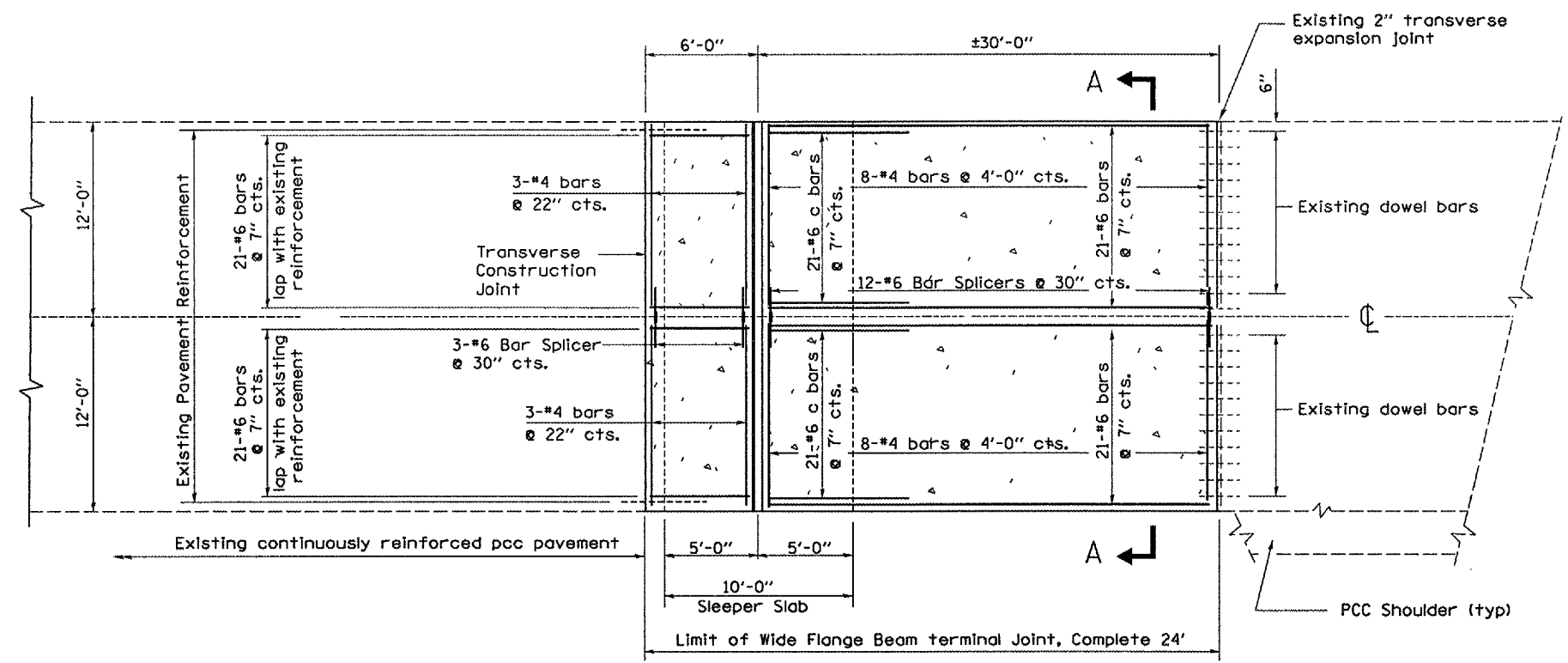


| F.A.I. RTE. | SECTION | COUNTY | TOTAL SHEETS | SHEET NO. |
|-----------------------|---------------|---------------------|--------------|-----------|
| 55 | 153-1.32-31-3 | GRUNDY & LIVINGSTON | 11 | 8 |
| FED. ROAD DIST. NO. - | | ILLINOIS PROJECT | | |



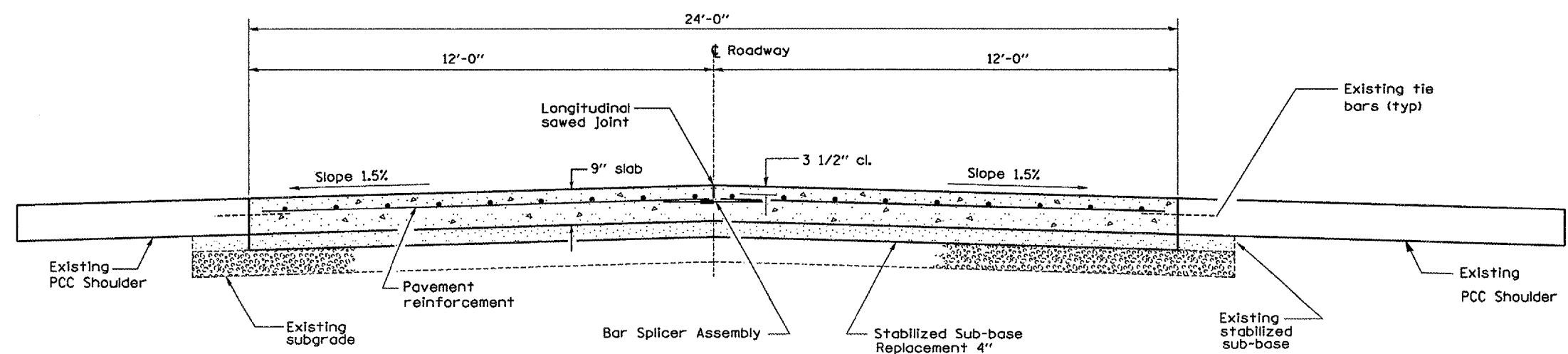
GENERAL NOTES

Sealant components for the wide flange beam terminal joint shall be as follows or approved equals. Sealant shall be Dow Corning 888 Silicone Highway Joint Sealant. Tape shall be Polyethylene Tape No. 40. Primer, used on the metal only, shall be Dow Corning 1200. At the Contractor's option the joint may be sealed as shown in the optional groove detail.

See Standards 420001 and 420401 for joint details not shown.

See Standard 421001 for details of pavement reinforcement.

PROPOSED PLAN VIEW
 M.P. 217.55 NBL M.P. 217.62 SBL
 M.P. 217.62 NBL M.P. 217.55 SBL



SECTION A-A

NOTE: Bar Splicer Assemblies shall be placed according to Standard 420001 for Longitudinal Sawed Joint

| REVISIONS | |
|-----------|------|
| NAME | DATE |
| | |
| | |
| | |
| | |
| | |
| | |
| | |
| | |
| | |
| | |

ILLINOIS DEPARTMENT OF TRANSPORTATION
WIDE FLANGE BEAM TERMINAL JOINT, COMPLETE 24'
 SCALE: VERT. DRAWN BY RLW
 HORIZ. CHECKED BY
 DATE 06/09/2005

Date: 06/15/2005
File: c:\projects\main06\cm321\details.dgn