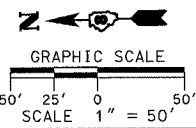
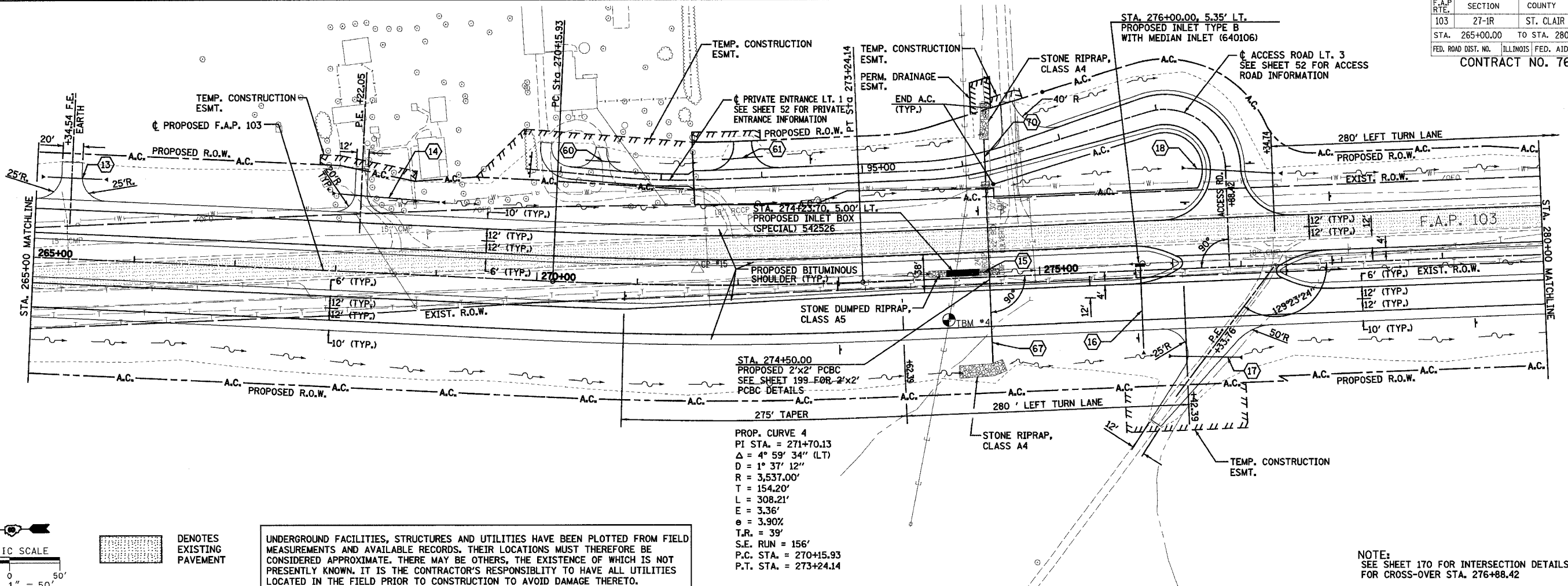


F.A.P. RTE.	SECTION	COUNTY	TOTAL SHEETS	SHEET NO.
103	27-1R	ST. CLAIR	382	33
STA. 265+00.00		TO STA. 280+00.00		
FED. ROAD DIST. NO.		ILLINOIS FED. AID PROJECT		
CONTRACT NO. 76300				

PLAN	SURVEYED	DATE
	ALLOTTED	
	CHECKED	
	BY	
	NO.	

PROFILE	SURVEYED	DATE
	ALLOTTED	
	CHECKED	
	BY	
	NO.	

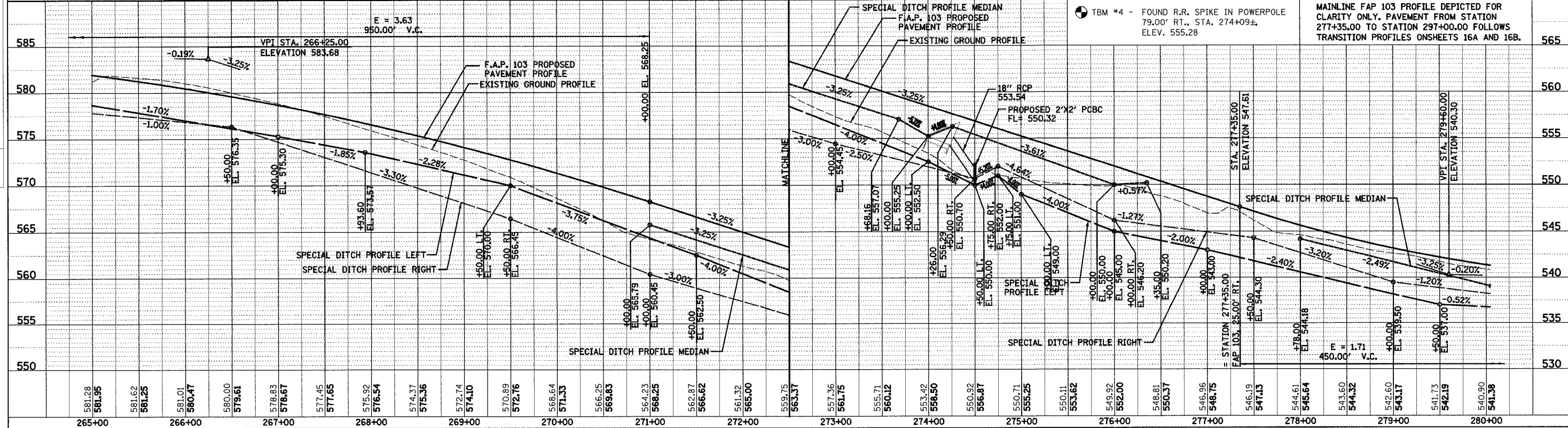


DENOTES EXISTING PAVEMENT

UNDERGROUND FACILITIES, STRUCTURES AND UTILITIES HAVE BEEN PLOTTED FROM FIELD MEASUREMENTS AND AVAILABLE RECORDS. THEIR LOCATIONS MUST THEREFORE BE CONSIDERED APPROXIMATE. THERE MAY BE OTHERS, THE EXISTENCE OF WHICH IS NOT PRESENTLY KNOWN. IT IS THE CONTRACTOR'S RESPONSIBILITY TO HAVE ALL UTILITIES LOCATED IN THE FIELD PRIOR TO CONSTRUCTION TO AVOID DAMAGE THERETO.

PROP. CURVE 4  
 PI STA. = 271+70.13  
 $\Delta = 4^\circ 59' 34''$  (LT)  
 $D = 1^\circ 37' 12''$   
 $R = 3,537.00'$   
 $T = 154.20'$   
 $L = 308.21'$   
 $E = 3.36'$   
 $e = 3.90\%$   
 $T.R. = 39'$   
 $S.E. RUN = 156'$   
 P.C. STA. = 270+15.93  
 P.T. STA. = 273+24.14

NOTE:  
 SEE SHEET 170 FOR INTERSECTION DETAILS FOR CROSS-OVER STA. 276+88.42



MAINLINE FAP 103 PROFILE DEPICTED FOR CLARITY ONLY. PAVEMENT FROM STATION 277+35.00 TO STATION 297+00.00 FOLLOWS TRANSITION PROFILES ONSHEETS 16A AND 16B.