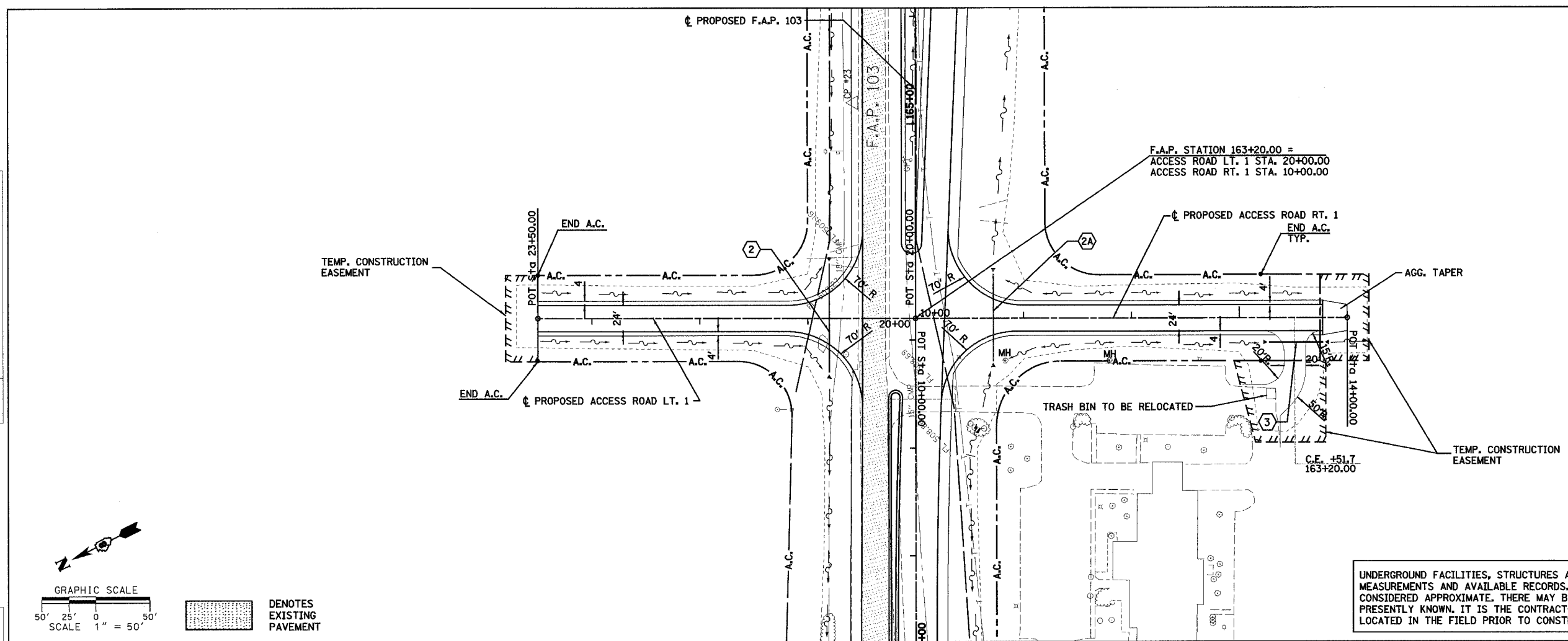
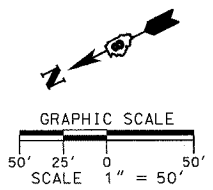


F.A.P. RTE.	SECTION	COUNTY	TOTAL SHEETS	SHEET NO.
103	27-1R	ST. CLAIR	382	44
STA.	81+91.16	TO STA.	96+00.00	
FED. ROAD DIST. NO.	ILLINOIS FED. AID PROJECT			
CONTRACT NO. 76300				



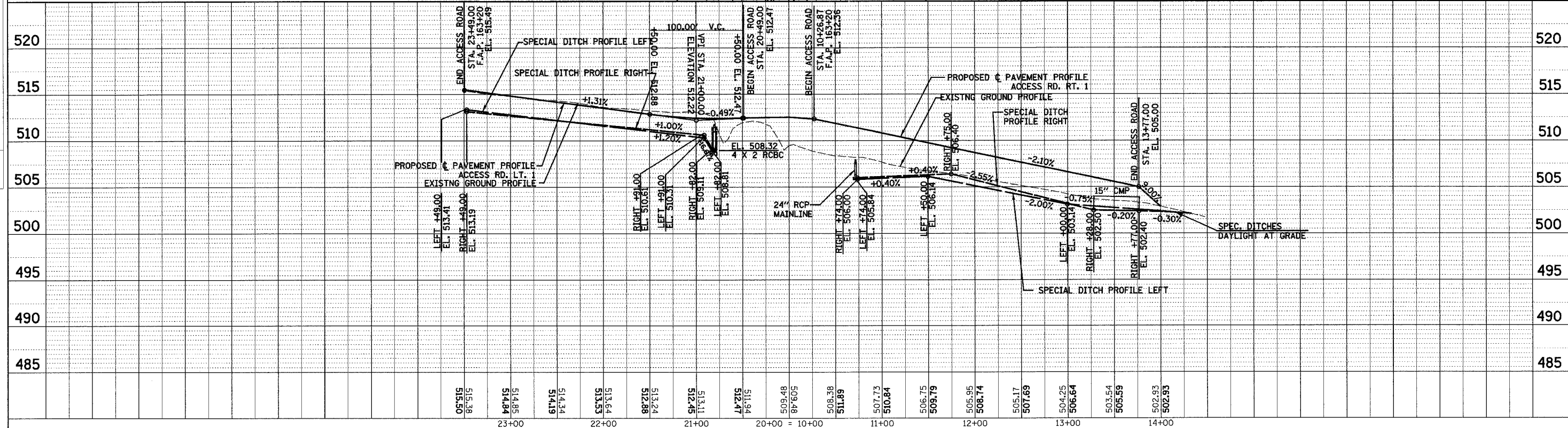
UNDERGROUND FACILITIES, STRUCTURES AND UTILITIES HAVE BEEN PLOTTED FROM FIELD MEASUREMENTS AND AVAILABLE RECORDS. THEIR LOCATIONS MUST THEREFORE BE CONSIDERED APPROXIMATE. THERE MAY BE OTHERS, THE EXISTENCE OF WHICH IS NOT PRESENTLY KNOWN. IT IS THE CONTRACTOR'S RESPONSIBILITY TO HAVE ALL UTILITIES LOCATED IN THE FIELD PRIOR TO CONSTRUCTION TO AVOID DAMAGE THERETO.



■ DENOTES EXISTING PAVEMENT

PLAN	DATE
BY	
REVIEWED	
NOTED	
CHECKED	
DATE	

PROFILE	DATE
BY	
REVIEWED	
NOTED	
CHECKED	
DATE	



PLAN & PROFILE - ACCESS ROAD RT. 1, LT. 1

104151 AM 3/9/2005 J:\2002\020158\000\CIVIL\egp\p03\_18.dgn