

UNDERGROUND FACILITIES, STRUCTURES AND UTILITIES HAVE BEEN PLOTTED FROM FIELD MEASUREMENTS AND AVAILABLE RECORDS. THEIR LOCATIONS MUST THEREFORE BE CONSIDERED APPROXIMATE. THERE MAY BE OTHERS, THE EXISTENCE OF WHICH IS NOT PRESENTLY KNOWN. IT IS THE CONTRACTOR'S RESPONSIBILITY TO HAVE ALL UTILITIES LOCATED IN THE FIELD PRIOR TO CONSTRUCTION TO AVOID DAMAGE THERETO.

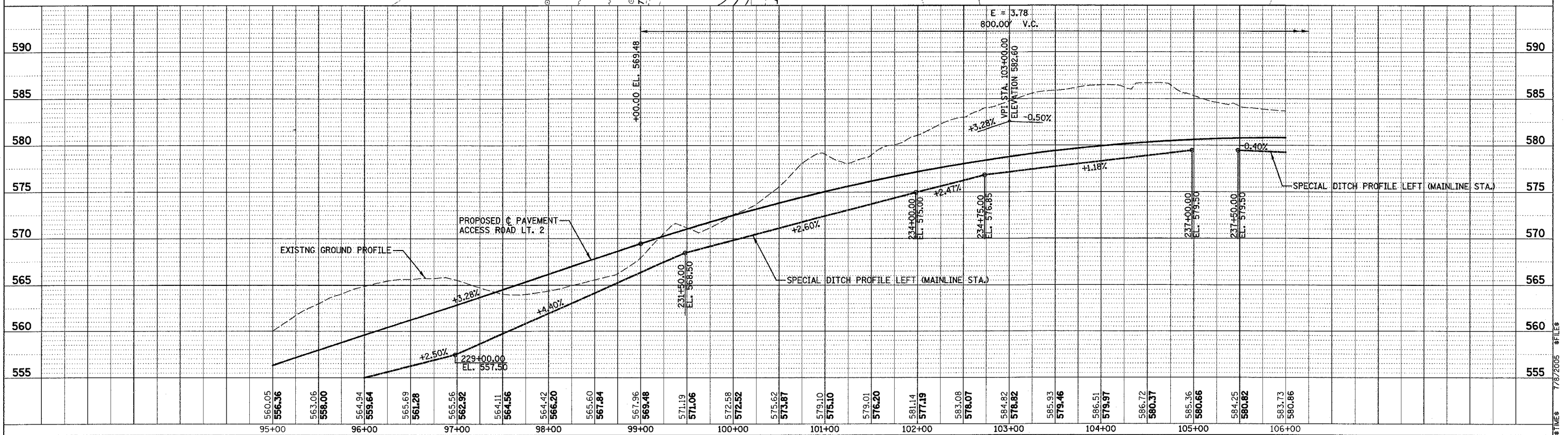
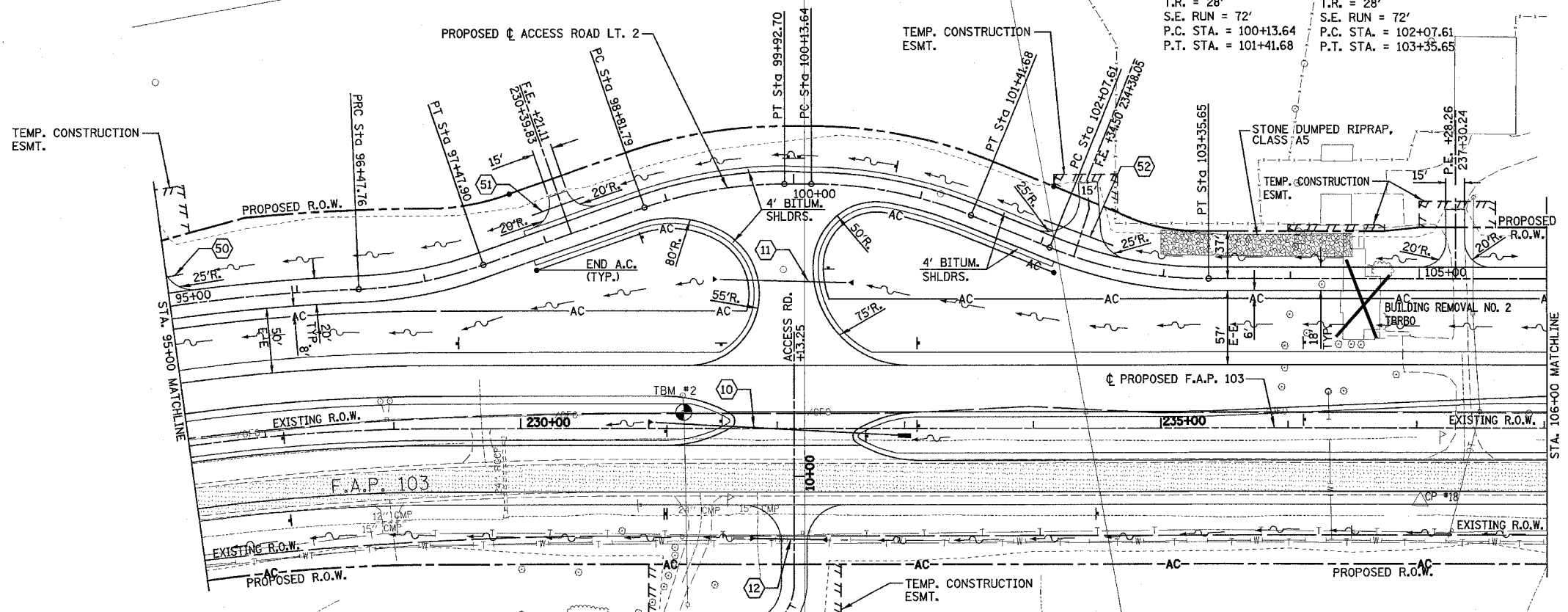
PROP. CURVE P_AR.L2-4
 PI STA. = 100+78.48
 $\Delta = 22^\circ 13' 49''$ (RT)
 $D = 17^\circ 21' 44''$
 $R = 330.00'$
 $T = 64.83'$
 $L = 128.04'$
 $E = 6.31'$
 $e = 3.94\%$
 $T.R. = 28'$
 $S.E. RUN = 72'$
 $P.C. STA. = 100+13.64$
 $P.T. STA. = 101+41.68$

PROP. CURVE P_AR.L2-5
 PI STA. = 102+72.45
 $\Delta = 22^\circ 13' 49''$ (LT)
 $D = 17^\circ 21' 44''$
 $R = 330.00'$
 $T = 64.83'$
 $L = 128.04'$
 $E = 6.31'$
 $e = 3.94\%$
 $T.R. = 28'$
 $S.E. RUN = 72'$
 $P.C. STA. = 102+07.61$
 $P.T. STA. = 103+35.65$

F.A.P. RTE.	SECTION	COUNTY	TOTAL SHEETS	SHEET NO.
103	27-1R	ST. CLAIR	382	50
STA. 101+00.00		TO STA. 116+55.00		
FED. ROAD DIST. NO. ILLINOIS FED. AID PROJECT				

CONTRACT NO. 76300

DENOTES
 EXISTING
 PAVEMENT



PLAN

DATE	
BY	
CHECKED	
DATE	
BY	
DATE	
BY	

PROFILE

DATE	
BY	
CHECKED	
DATE	
BY	
DATE	
BY	

PLAN & PROFILE - ACCESS ROAD LT. 2

7/8/2005 8:15:58