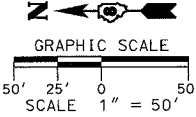


<p>PROP. CURVE P_AR_R3-1 PI STA. = 102+08.36 $\Delta = 115^\circ 19' 24''$ (LT) $D = 88^\circ 08' 50''$ $R = 65.00'$ $T = 102.67'$ $L = 130.83'$ $E = 56.51'$ $e = 4.00\%$ $T.R. = 28'$ $S.E. RUN = 73'$ $P.C. STA. = 101+05.69$ $P.T. STA. = 102+36.52$</p>	<p>PROP. CURVE P_AR_R3-2 PI STA. = 103+77.85 $\Delta = 25^\circ 19' 23''$ (RT) $D = 17^\circ 21' 44''$ $R = 330.00'$ $T = 74.14'$ $L = 145.85'$ $E = 8.22'$ $e = 3.94\%$ $T.R. = 28'$ $S.E. RUN = 72'$ $P.C. STA. = 103+03.72$ $P.T. STA. = 104+49.57$</p>
---	---



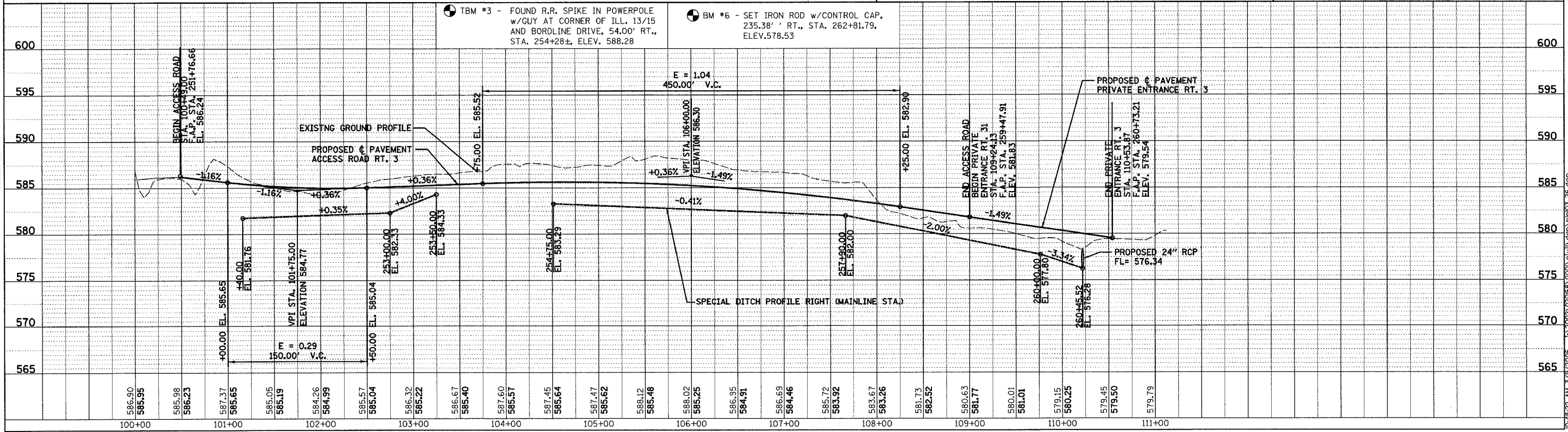
NOTE:
 SEE SHEET 169 FOR INTERSECTION
 DETAIL FOR BORDERLINE DRIVE
 AND ARROW LANE

UNDERGROUND FACILITIES, STRUCTURES AND UTILITIES HAVE BEEN PLOTTED FROM FIELD MEASUREMENTS AND AVAILABLE RECORDS. THEIR LOCATIONS MUST THEREFORE BE CONSIDERED APPROXIMATE. THERE MAY BE OTHERS, THE EXISTENCE OF WHICH IS NOT PRESENTLY KNOWN. IT IS THE CONTRACTOR'S RESPONSIBILITY TO HAVE ALL UTILITIES LOCATED IN THE FIELD PRIOR TO CONSTRUCTION TO AVOID DAMAGE THERETO.

DENOTES EXISTING PAVEMENT

TBM #3 - FOUND R.R. SPIKE IN POWERPOLE w/GUY AT CORNER OF ILL. 13/15 AND BORDLINE DRIVE, 54.00' RT., STA. 254+28±, ELEV. 588.28

BM #6 - SET IRON ROD w/CONTROL CAP, 235.38' RT., STA. 262+81.79, ELEV. 578.53



DATE: _____
 BY: _____
 CHECKED: _____
 DATE: _____

DATE: _____
 BY: _____
 CHECKED: _____
 DATE: _____