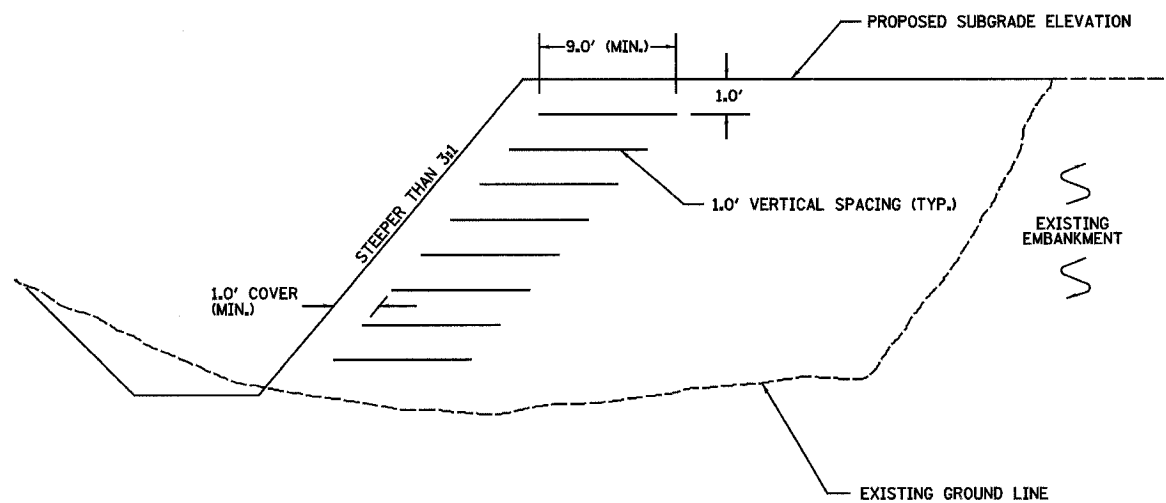


F.A.P. RTE.	SECTION	COUNTY	TOTAL SHEETS	SHEET NO.
103	27-1R	ST. CLAIR	382	52A
STA. 135+00.00	TO STA. 147+00.00			
FED. ROAD DIST. NO.	ILLINOIS	FED. AID PROJECT		
CONTRACT NO. 76300				



**TYPICAL SECTION DETAIL
GRID REINFORCED EMBANKMENT**

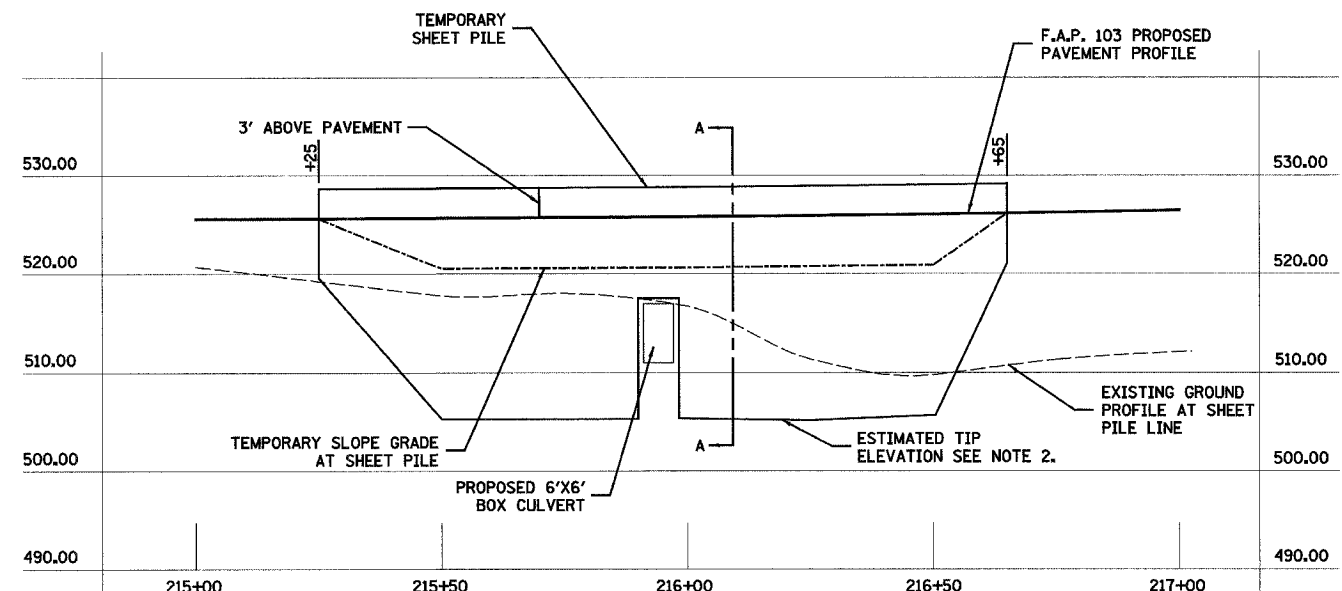
NOTE:

- NOT TO SCALE

GEOGRID PROPERTIES:

- 14,000 LB/FT MIN. TENSILE MODULUS
- 765 LB/FT MIN. JUNCTION STRENGTH

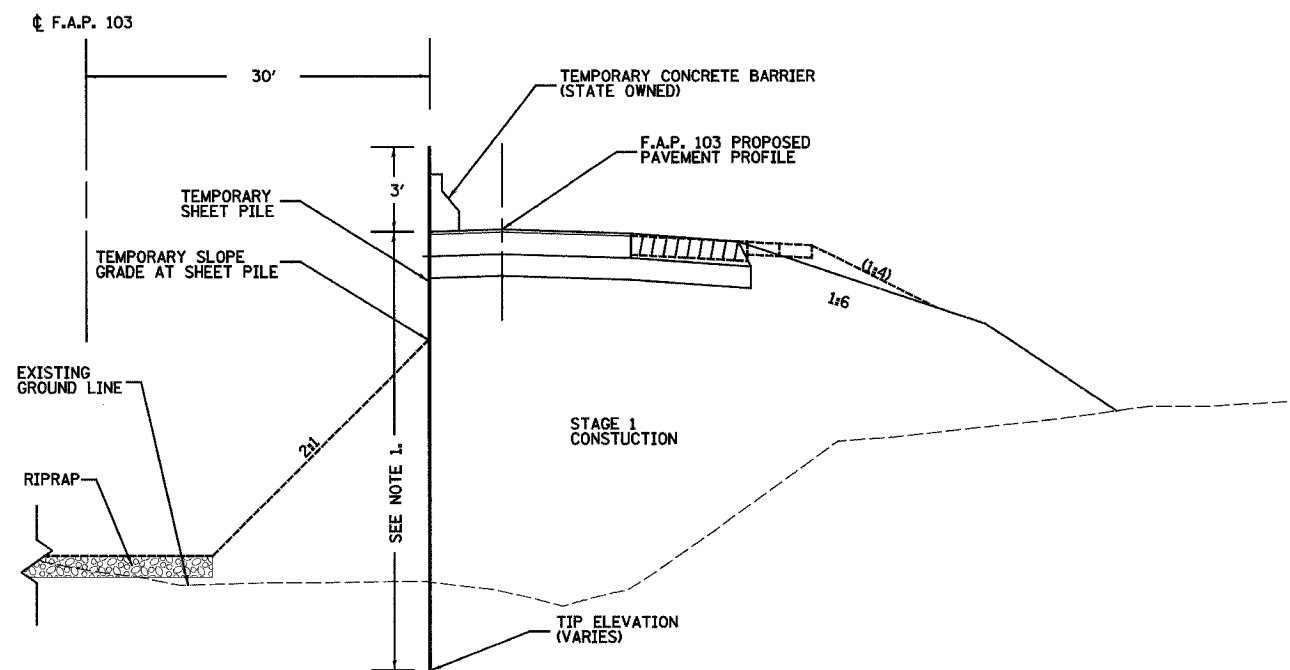
- REFER TO SPECIAL PROVISIONS FOR ADDITIONAL INFORMATION AND REQUIREMENTS



SHEET PILE DETAIL

NOTES:

- THE CONTRACTOR SHALL DETERMINE THE REQUIRED TIP ELEVATION AND SECTION MODULUS FOR ALL SHEET PILES TO SUPPORT THE PROPOSED EMBANKMENT, PAVEMENTS AND TRAFFIC DURING CONSTRUCTION.
- THE ESTIMATE TIP ELEVATION SHOWN ON THE DETAIL IS APPROXIMATE AND HAS BEEN ESTIMATED BASED ON A RATIO OF EMBEDMENT EQUAL TO 3 TIMES THE EXPOSED HEIGHT FROM THE TEMPORARY 2:1 SLOPE TO THE PROPOSED PAVEMENT SURFACE ELEVATION.
- THE PLAN QUANTITY FOR TEMPORARY SHEET PILE WAS CALCULATED BASED ON THE AREA SHOWN ON THIS DETAIL PLUS 25% FOR UNKNOWN FIELD CONDITIONS AND POTENTIAL GEOMETRIC MODIFICATIONS. THE FINAL PAY QUANTITY WILL BE CALCULATED ON THE BASIS OF THE CONTRACTORS DESIGN SUBMITTAL AND LENGTHS DRIVEN TO DESIGN TIP ELEVATIONS
- REFER TO SPECIAL PROVISION FOR ADDITIONAL INFORMATION AND REQUIREMENTS.



**SECTION A-A
(NOT TO SCALE)**

REVISIONS		ILLINOIS DEPARTMENT OF TRANSPORTATION	
NAME	DATE	SHEET PILE AND BIAXIAL GEOGRID DETAIL	
		F.A.P. 103 (IL. RTE. 13/15)	
		SECTION 27-1R - ST. CLAIR CO.	
		SCALE: 1" = 50'	DRAWN BY CRO
		DATE February 11, 2005	CHECKED BY RCY

DATE	BY	SURVEYED	ALIGNED	CHECKED	NO.

DATE	BY	SURVEYED	ALIGNED	CHECKED	NO.

J:\2002\022858\0001\civil\gpa\sheet_pile_detail.03.dgn 3/9/2005 1:48:22 PM