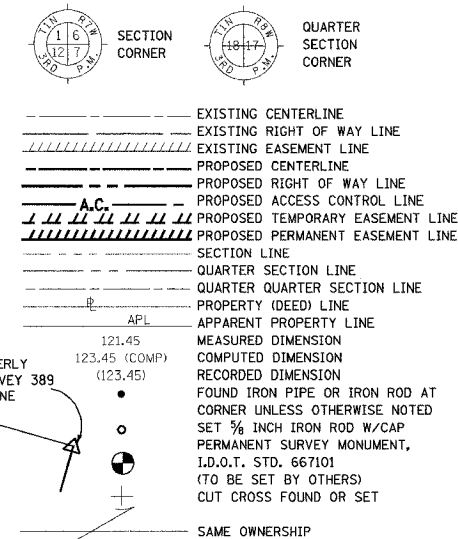


PART OF U.S. SURVEY 389, T1N, R7W, T1N, R8W, T1S, R7W AND T1S, R8W
OF THE THIRD P.M., ST. CLAIR COUNTY, ILLINOIS

SECTION	COUNTY	TOTAL SHEETS	SHEET NO.
103	ST. CLAIR	382	122
STA. 170+54.19 TO STA. 182+34.04			
FED. ROAD DIST. NO.		ILLINOIS	FED. AID PROJECT

LEGEND



U.S. SURVEY 389, CLAIM 332, 333, 334, AND 335

HAROLD LEE MILLER, AS TO AN UNDIVIDED 1/2 INTEREST; AND HAROLD LEE MILLER AND GLORIA M. MILLER, HIS WIFE AS JOINT TENANTS AS AN UNDIVIDED 1/2 INTEREST. BK 1546, PG 117 BK 1393, PG 58

PROP. CURVE P-AR-LIA-1
PI STA. = 103+18.23
Δ = 15° 16' 32" (RT)
D = 17° 21' 44"
R = 330.00'
T = 44.25'
L = 87.98'
E = 2.95'
P.C. STA. = 102+73.98
P.T. STA. = 103+61.96
CB = S 66°34'22" E
C = 87.72'

PROP. CURVE P-AR-LIA-2
PI STA. = 105+07.03
Δ = 15° 18' 08" (LT)
D = 17° 21' 44"
R = 330.00'
T = 44.33'
L = 88.14'
E = 2.96'
P.C. STA. = 104+62.69
P.T. STA. = 105+50.83
CB = S 66°35'10" E
C = 37.31'

SEE SHEET 4 FOR R.O.W. INFORMATION

STATE OF ILLINOIS)
COUNTY OF)

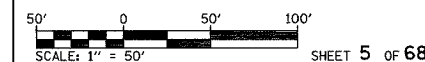
THIS IS TO CERTIFY THAT I, RONALD G. BRIGHT AN ILLINOIS PROFESSIONAL LAND SURVEYOR, SURVEYED THE PLAT OF HIGHWAYS SHOWN HEREON IN U.S. SURVEYS NO. 382, 389, AND 772 AND IN SECTIONS 6, 7, 18, 19, 20, 29 AND 30, TOWNSHIP 1 SOUTH, RANGE 7 WEST OF THE THIRD PRINCIPAL MERIDIAN, ST. CLAIR COUNTY, ILLINOIS, THAT THE SURVEY IS COMPLETE AS SHOWN TO THE BEST OF MY KNOWLEDGE AND BELIEF, THAT THE PLAT REPRESENTS SAID SURVEY, THAT ALL MONUMENTS FOUND AND ESTABLISHED ARE OF PERMANENT QUALITY AND OCCUPY THE POSITIONS SHOWN THEREON AND THAT THE MONUMENTS ARE SUFFICIENT TO ENABLE THE SURVEY TO BE RETRACED. MADE FOR THE DEPARTMENT OF TRANSPORTATION, STATE OF ILLINOIS.

DATED _____

RONALD G. BRIGHT, PLS #3157
EXPIRES NOVEMBER 30, 2006

kdg KUHLMANN DESIGN GROUP, INC.
15 E. WASHINGTON STREET
BELLEVILLE, ILLINOIS 62220
(618) 234-8898

ILLINOIS DEPARTMENT OF TRANSPORTATION
PLAT OF HIGHWAYS
FAP ROUTE 103 (IL RTE. 13/15)
SECTION 27-1R
ST. CLAIR COUNTY
JOB NO. R-98-019-00
STATION 170+54.19 TO STATION 182+34.04



ILLINOIS DEPARTMENT OF TRANSPORTATION
DIVISION OF HIGHWAYS/DISTRICT 8
1102 EASTPORT PLAZA DRIVE
COLLINGSVILLE, ILLINOIS 62234-6198

COORDINATE TABLE				
STATION	OFFSET	NORTH	EAST	POT AR-LIA
100+00.00	0'	658768.0240	2364707.2970	POT AR-LIA
100+62.00	32.00' LT.	658781.9450	2364775.6660	BEGIN A.C.
100+62.00	18.00' RT.	658733.8322	2364762.0607	END A.C.
101+74.17	18.00' RT.	658703.3114	2364869.9949	P.C. A.C. LINE
102+16.17	60.00' RT.	658651.4683	2364898.9810	P.I. A.C. LINE
102+39.18	0'	658702.9397	2364937.4587	POT AR-LIA
102+73.98	0'	658693.4725	2364970.9397	P.C. AR-LIA
103+61.96	0'	658658.5960	2365051.4294	P.T. AR-LIA
104+62.69	0'	658606.6170	2365137.7149	P.C. AR-LIA
102+62.20	68.00' RT.	658631.2530	2364941.1080	P.I. A.C. LINE
102+62.20	60.00' RT.	658638.9522	2364943.2817	P.C. A.C. LINE
103+10.95	18.00' RT.	658664.7780	2364999.0750	A.C. LINE
103+61.96	18.00' RT.	658643.1780	2365042.1410	A.C. LINE
104+23.99	18.00' RT.	658611.1691	2365095.2770	A.C. LINE
104+29.86	39.78' RT.	658589.4900	2365089.0640	A.C. LINE

PROP. CURVE 1
P.I. STA. = 180+56.95
Δ = 00°01'36" LT
R = 214,348.22'
L = 100.00'
E = 0.01'
P.C. STA. 180+06.95
P.T. STA. 181+06.95

- NOTES:
- BEARINGS AND COORDINATES SHOWN HEREON ARE BASED ON SURVEY CONTROL DATA PROVIDED BY THE IL. DEPARTMENT OF TRANSPORTATION.
 - TOPOGRAPHY AS SHOWN SUPPLIED BY IL. DEPARTMENT OF TRANSPORTATION, DISTRICT 8 COLLINGSVILLE, IL.
 - MRBK = MONUMENT AND RECORD BOOK.