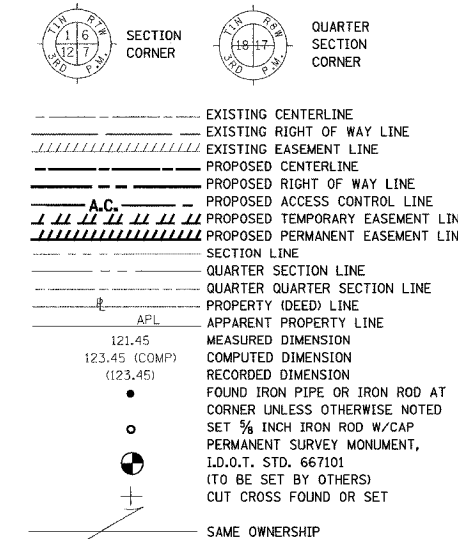


PART OF THE SW 1/4 OF THE SE 1/4 OF SECTION 18, T1S, R7W OF THE THIRD P.M., ST. CLAIR COUNTY, ILLINOIS

FAP ROUTE	SECTION	COUNTY	TOTAL SHEETS	SHEET NO.
103	27-1R	ST. CLAIR	382	159
STA. 317+45.06		TO STA. 327+74.39		
FED. ROAD DIST. NO.		ILLINOIS	FED. AID PROJECT	

LEGEND



- ▲ SET CONCRETE SURVEY CONTROL MONUMENT
- STAKING OF PROPOSED RIGHT OF WAY. SET 5/8 INCH METAL ROD WITH DIVISION OF HIGHWAY SURVEY MARKER TO MONUMENT THE POSITION SHOWN. IDENTIFIED BY INSCRIPTION DATA AND SURVEYORS REGISTRATION NUMBER.
- STAKING OF PROPOSED RIGHT OF WAY IN CULTIVATED AREAS. SET 5/8 INCH METAL ROD WITH DIVISION OF HIGHWAY SURVEY MARKER 20 INCHES BELOW GROUND SURFACE TO MONUMENT THE POSITION SHOWN. IDENTIFIED BY INSCRIPTION DATA AND SURVEYORS REGISTRATION NUMBER.

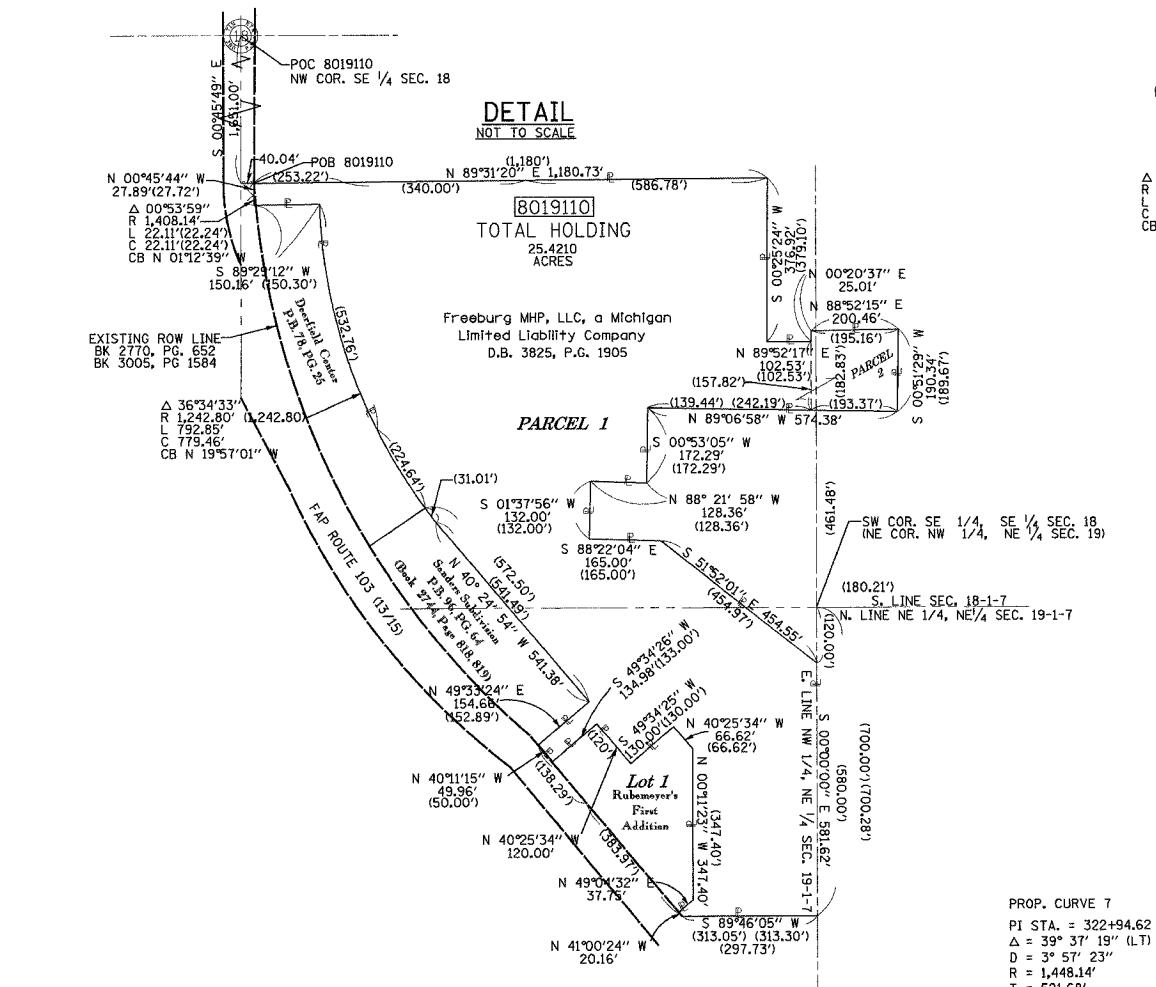
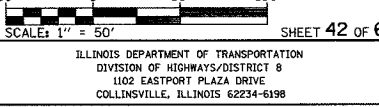
STATE OF ILLINOIS)
COUNTY OF) SS

THIS IS TO CERTIFY THAT I, RONALD G. BRIGHT AN ILLINOIS PROFESSIONAL LAND SURVEYOR, SURVEYED THE PLAT OF HIGHWAYS SHOWN HEREON IN U.S. SURVEYS NO. 382, 389, AND 772 AND IN SECTIONS 6, 7, 18, 19, 20, 29 AND 30, TOWNSHIP 1 SOUTH, RANGE 7 WEST, OF THE THIRD PRINCIPAL MERIDIAN, ST. CLAIR COUNTY, ILLINOIS, THAT THE SURVEY IS COMPLETE AS SHOWN TO THE BEST OF MY KNOWLEDGE AND BELIEF, THAT THE PLAT REPRESENTS SAID SURVEY, THAT ALL MONUMENTS FOUND AND ESTABLISHED ARE OF PERMANENT QUALITY AND OCCUPY THE POSITIONS SHOWN THEREON AND THAT THE MONUMENTS ARE SUFFICIENT TO ENABLE THE SURVEY TO BE RETRACED. MADE FOR THE DEPARTMENT OF TRANSPORTATION, STATE OF ILLINOIS.

DATED _____
RONALD G. BRIGHT, PLS #3157
EXPIRES NOVEMBER 30, 2006

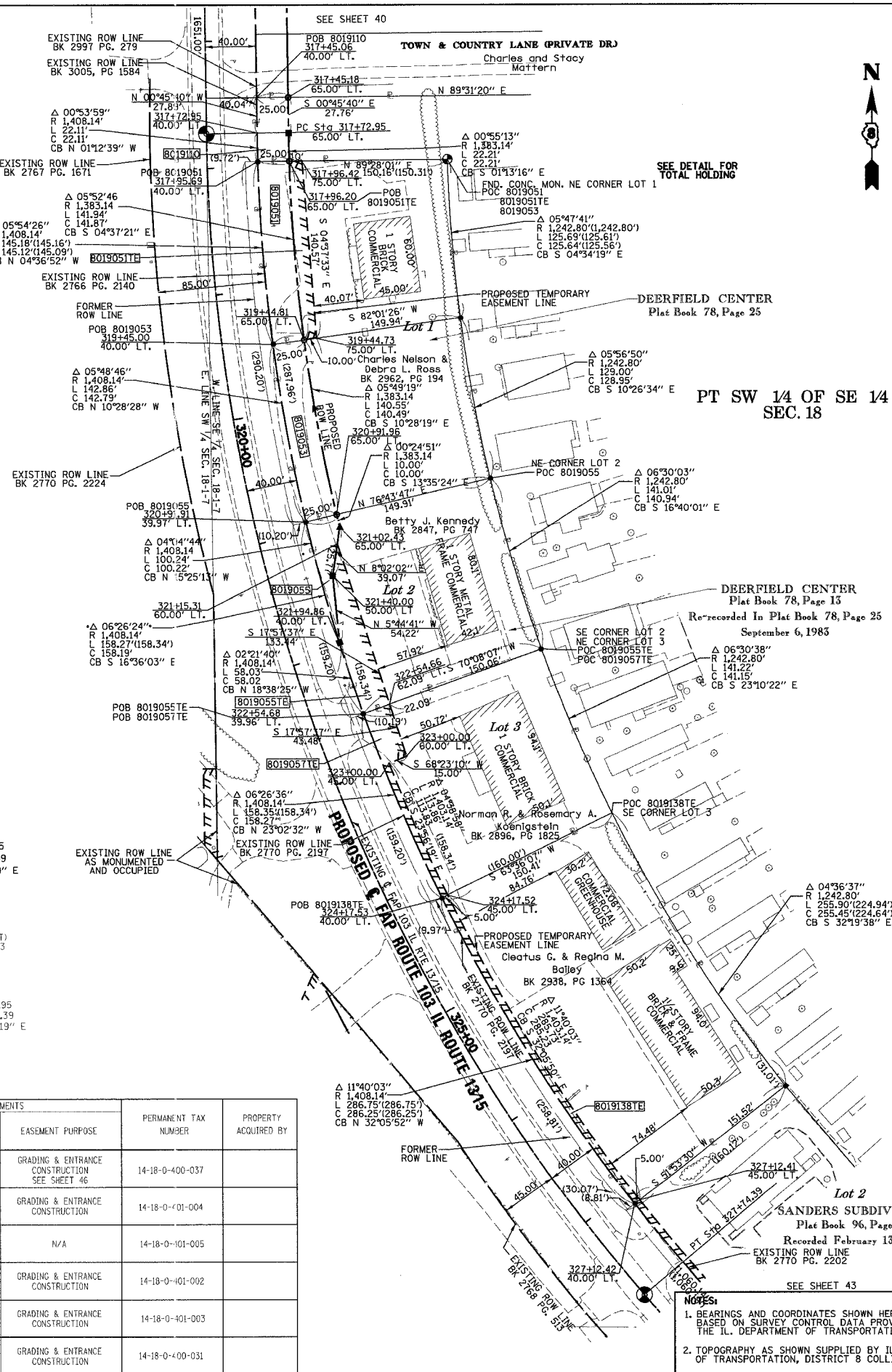
kdg KUHLMANN DESIGN GROUP, INC.
15 E. WASHINGTON STREET
BELLEVILLE, ILLINOIS 62220
(618) 234-8898

ILLINOIS DEPARTMENT OF TRANSPORTATION
PLAT OF HIGHWAYS
FAP ROUTE 103 (IL RTE. 1315)
SECTION 27-1R
ST. CLAIR COUNTY
JOB NO. R-98-019-00
STATION 317+45.06 TO STATION 327+74.39



COORDINATE TABLE				
STATION	OFFSET	NORTH	EAST	EXIST. ROW
317+45.06	40.00' LT.	646259.6300	2367912.9900	EXIST. ROW
317+45.18	65.00' LT.	646259.8305	2367937.9901	PROP. ROW
317+72.95	0	646231.1875	2367873.3236	PROP. PC STA.
317+72.95	40.00' LT.	646231.7455	2367913.3610	EXIST. ROW
317+72.95	65.00' LT.	646232.0778	2367938.3589	PROP. ROW
317+95.69	40.00' LT.	646209.6380	2367913.8283	EXIST. ROW
317+96.20	65.00' LT.	646209.8706	2367938.8323	PROP. ROW
319+44.81	65.00' LT.	646068.4590	2367950.2611	PROP. ROW
319+45.00	40.00' LT.	646064.9900	2367925.5032	EXIST. ROW
320+91.91	39.97' LT.	645924.5752	2367951.4628	EXIST. ROW
320+91.96	65.00' LT.	645930.3139	2367975.7955	PROP. ROW
321+02.43	65.00' LT.	645920.5938	2367978.1452	PROP. ROW
321+40.00	50.00' LT.	645881.9058	2367972.6846	PROP. ROW
321+94.86	40.00' LT.	645827.9605	2367978.1116	PROP. ROW
322+54.68	39.96' LT.	645772.9675	2367996.6212	EXIST. ROW
324+17.53	40.00' LT.	645627.3383	2368058.6057	EXIST. ROW
327+12.42	40.00' LT.	645384.8406	2368210.7106	EXIST. ROW
327+74.39	0	645312.1522	2368218.2205	PROP. PT STA.

PARCEL NO.	OWNER	BOOK & PAGE	TOTAL HOLDING ACRES	FEE SIMPLE ACQUISITION			REMAINDER ACRES	EASEMENTS		PERMANENT TAX NUMBER	PROPERTY ACQUIRED BY	
				GROSS ACRES	PREVIOUSLY DEDICATED ACRES	NET ACRES		PE = PERMANENT ACRES	TE = TEMPORARY ACRES			EASEMENT PURPOSE
8019110	FREEBURG MHP, LLC, A MICHIGAN LIMITED LIABILITY COMPANY TITLE REPORT NO. SC-2854.14	BK 3825 PG 1905	25.4210	0.0287	1,250	N/A	0.0287	1,250	25.3923	TE 0.0115 TE 500	GRADING & ENTRANCE CONSTRUCTION SEE SHEET 46	14-18-0-400-037
8019051	FREEBURG VISION CENTER, INC., AN ILLINOIS CORPORATION TITLE REPORT NO. SC-2854.38	BK 3448 PG 2086	0.4665	0.0824	3,589	N/A	0.0824	3,589	0.3841	TE 0.0363 TE 1,582	GRADING & ENTRANCE CONSTRUCTION	14-18-0-01-004
8019053	CHARLES NELSON AND DEBRA L. ROSS, HIS WIFE, AS JOINT TENANTS TITLE REPORT NO. SC-2854.13	BK 2962 PG 194	0.4678	0.0813	3,543	N/A	0.0813	3,543	0.3865	N/A	N/A	14-18-0-101-005
8019055	BETTY J. KENNEDY TITLE REPORT NO. SC-2854.12	BK 2847 PG 747	0.5206	0.0268	1,168	N/A	0.0268	1,168	0.4938	TE 0.0537 TE 2,338	GRADING & ENTRANCE CONSTRUCTION	14-18-0-101-002
8019057	NORMAN R. KOENIGSTEIN AND ROSEMARY A. KOENIGSTEIN, AS JOINT TENANTS TITLE REPORT NO. SC-2854.39	BK 2896 PG 1825	0.5219	N/A	N/A	N/A	N/A	N/A	0.5219	TE 0.0343 TE 1,496	GRADING & ENTRANCE CONSTRUCTION	14-18-0-401-003
80190138	CLEATUS G. BAILEY AND REGINA M. BAILEY, AS JOINT TENANTS TITLE REPORT NO. SC-2854.40	BK 2938 PG 1364	0.9143	N/A	N/A	N/A	N/A	N/A	0.9143	TE 0.0329 TE 1,431	GRADING & ENTRANCE CONSTRUCTION	14-18-0-400-031



- NOTES:**
- BEARINGS AND COORDINATES SHOWN HEREON ARE BASED ON SURVEY CONTROL DATA PROVIDED BY THE ILL. DEPARTMENT OF TRANSPORTATION.
 - TOPOGRAPHY AS SHOWN SUPPLIED BY ILL. DEPARTMENT OF TRANSPORTATION, DISTRICT 8 COLLINSVILLE, IL.
 - MRRK = MONUMENT AND RECORD BOOK.