

FAP ROUTE	SECTION	COUNTY	TOTAL SHEETS	SHEET NO.
103	27-1R	ST. CLAIR	382	160
STA. 327+12.42		TO STA. 337+63.77		
FED. ROAD DIST. NO.		ILLINOIS	FED. AID PROJECT	

PART OF THE NW 1/4 OF THE NE 1/4 OF SECTION 19, AND PART OF THE SW 1/4 OF THE SE 1/4 OF SECTION 18, T1S, R7W OF THE THIRD P.M., ST. CLAIR COUNTY, ILLINOIS

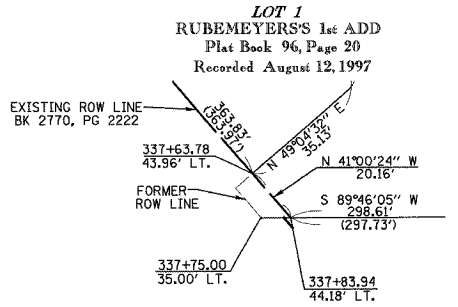
LEGEND

- EXISTING CENTERLINE
- EXISTING RIGHT OF WAY LINE
- EXISTING EASEMENT LINE
- PROPOSED CENTERLINE
- PROPOSED RIGHT OF WAY LINE
- PROPOSED ACCESS CONTROL LINE
- PROPOSED TEMPORARY EASEMENT LINE
- PROPOSED PERMANENT EASEMENT LINE
- SECTION LINE
- QUARTER SECTION LINE
- QUARTER QUARTER SECTION LINE
- PROPERTY (DEED) LINE
- APPARENT PROPERTY LINE (APL)
- MEASURED DIMENSION (121.45)
- COMPUTED DIMENSION (123.45)
- RECORDED DIMENSION (123.45)
- FOUND IRON PIPE OR IRON ROD AT CORNER UNLESS OTHERWISE NOTED
- SET 5/8 INCH IRON ROD W/CAP PERMANENT SURVEY MONUMENT, I.O.D.T. STD. 667101 (TO BE SET BY OTHERS)
- CUT CROSS FOUND OR SET
- SAME OWNERSHIP

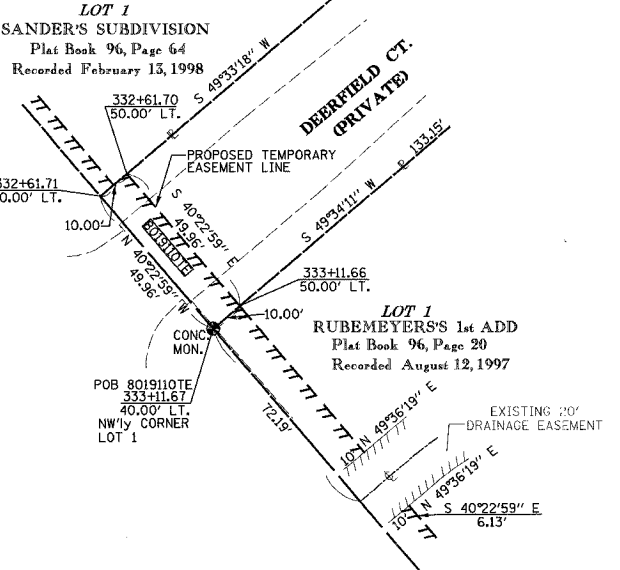
PROP. CURVE 7
 PI STA. = 322+94.62
 $\Delta = 39^\circ 37' 19''$ (LT)
 D = 3° 57' 23"
 R = 1,448.14'
 T = 521.68'
 L = 1,001.44'
 E = 91.10'
 P.C. STA. = 317+72.95
 P.T. STA. = 327+74.39
 CH. BRG. = S 20°34'19" E
 CH. 981.60'

EXIST. CURVE 3
 $\Delta = 39^\circ 37' 20''$ (LT)
 PI STA. = 322+94.63
 D = 3° 57' 23"
 R = 1,448.14'
 T = 521.68'
 L = 1,001.44'
 E = 91.10'
 P.C. STA. = 317+72.95
 P.T. STA. = 327+74.39
 CH. BRG. = S 20°34'19" E
 CH. 981.60'

DETAIL B
NOT TO SCALE



DETAIL A
NOT TO SCALE



STATION	OFFSET	NORTH	EAST	EXIST. ROW
327+12.42	40.00' LT	645384.8406	2368210.7106	EXIST. ROW
327+74.39	0	645312.0846	2368218.2852	PROP. PT. STA.
327+74.49	40.00' LT.	645338.0446	2368248.8211	EXIST. ROW
331+00.32	40.00' LT.	645089.8505	2368459.9250	EXIST. ROW
332+61.71	40.00' LT.	644966.9147	2368564.4885	EXIST. ROW
333+11.67	40.00' LT.	644928.8586	2368596.8573	EXIST. ROW
333+73.91	40.00' LT.	644881.4484	2368637.1822	EXIST. ROW
333+93.91	40.00' LT.	644866.2139	2368650.1400	EXIST. ROW
333+99.99	40.00' LT.	644861.5777	2368654.0833	EXIST. ROW
337+63.78	43.96' LT.	644587.0359	2368892.7939	EXIST. ROW
337+83.94	44.18' LT.	644571.8225	2368906.0218	EXIST. ROW

C1	C2
$\Delta 21^\circ 29' 48''$	$\Delta 21^\circ 31' 39''$
R 100.00'	R 40.00'
L 37.52'	L 15.03'
C 37.30'	C 14.94'
CB N 60°32'57" E	CB N 60°32'02" E

PARCEL NO.	OWNER	BOOK & PAGE	TOTAL HOLDING ACRES	GROSS		PREVIOUSLY DEDICATED		NET		REMAINDER	EASEMENTS		PERMANENT TAX NUMBER	PROPERTY ACQUIRED BY
				ACRES	SQ. FT.	ACRES	SQ. FT.	ACRES	SQ. FT.		ACRES	SQ. FT.		
8019059	RICHARD & LINDA SANDERS, AS TENANTS IN COMMON TITLE REPORT NO. SC-2854.20	BK 2744 PG 818	1.3458	N/A	N/A	N/A	N/A	N/A	N/A	1.3458	TE 0.0443	TE 1.931	14-19-0-202-037	
8019061	CASEY'S RETAIL COMPANY TITLE REPORT NO. SC-2854.31	BK 4050 PG 1153	0.5641	N/A	N/A	N/A	N/A	N/A	N/A	0.5641	TE 0.0185	TE 807	14-19-0-202-038	
8019063	MCDONALD'S CORPORATION, A DELAWARE CORPORATION TITLE REPORT NO. SC-2854.34	BK 3182 PG 105	1.6736	N/A	N/A	N/A	N/A	N/A	N/A	1.6736	TE-A 0.0143 TE-B 0.1367	TE-A 622 TE-B 5,954	14-19-0-202-032	
8019110	Freeburg MHP, LLC, a Michigan Limited Liability Company TITLE REPORT NO. SC-2854.14	BK 3825 PG 1905	25.4210	0.0287	1,250	N/A	N/A	0.0287	1,250	25.3923	TE 0.0115	TE 500	14-18-0-400-037	

(A)	BK. 2768, PG. 513
(B)	BK. 27753 PG. 823
(C)	BK. 2755, PG. 1246
(D)	CONDEMNATION CASE NO. 89-ED-7
(E)	BK. 2768, PG. 515
(F)	BK. 2770, PG. 2222
(G)	BK. 2770, PG. 2202

- NOTES:**
- BEARINGS AND COORDINATES SHOWN HEREON ARE BASED ON SURVEY CONTROL DATA PROVIDED BY THE ILL. DEPARTMENT OF TRANSPORTATION.
 - TOPOGRAPHY AS SHOWN SUPPLIED BY ILL. DEPARTMENT OF TRANSPORTATION, DISTRICT 8 COLLINGSVILLE, ILL.
 - MRBK = MONUMENT AND RECORD BOOK.

KUHLMANN DESIGN GROUP, INC.
 15 E. WASHINGTON STREET
 BELLEVILLE, ILLINOIS 62220
 (618) 234-8898

ILLINOIS DEPARTMENT OF TRANSPORTATION
PLAT OF HIGHWAYS
 FAP ROUTE 103 (IL RTE. 13/15)
 SECTION 27-1R
 ST. CLAIR COUNTY
 JOB NO. R-98-019-00
 STATION 327+12.42 TO STATION 337+63.77

50' 0 50' 100'
 SCALE: 1" = 50'

ILLINOIS DEPARTMENT OF TRANSPORTATION
 DIVISION OF HIGHWAYS/DISTRICT 8
 1102 EASTPORT PLAZA DRIVE
 COLLINGSVILLE, ILLINOIS 62234-6198