

160 150 140 130 120 110 100 90 80 70 60 50 40 30 20 10 0 10 20 30 40 50 60 70 80 90 100 110 120

F.A. RTE. 103	SECTION 27-IR	COUNTY ST. CLAIR	TOTAL SHEETS 382	SHEET NO. 325
STA. TO STA.		FED. ROAD DIST. NO. ILLINOIS FED. AID PROJECT		
CONTRACT NO. 76300				

SPEC. DITCH LEFT  
STA. 300+75 TO 300+80  
AT +10.40 %

PROP. F.A.P. 103

SPEC. DITCH LEFT  
STA. 300+63 TO 300+75  
AT -3.50 %

C.E. LEFT  
2.41%

300+74.65

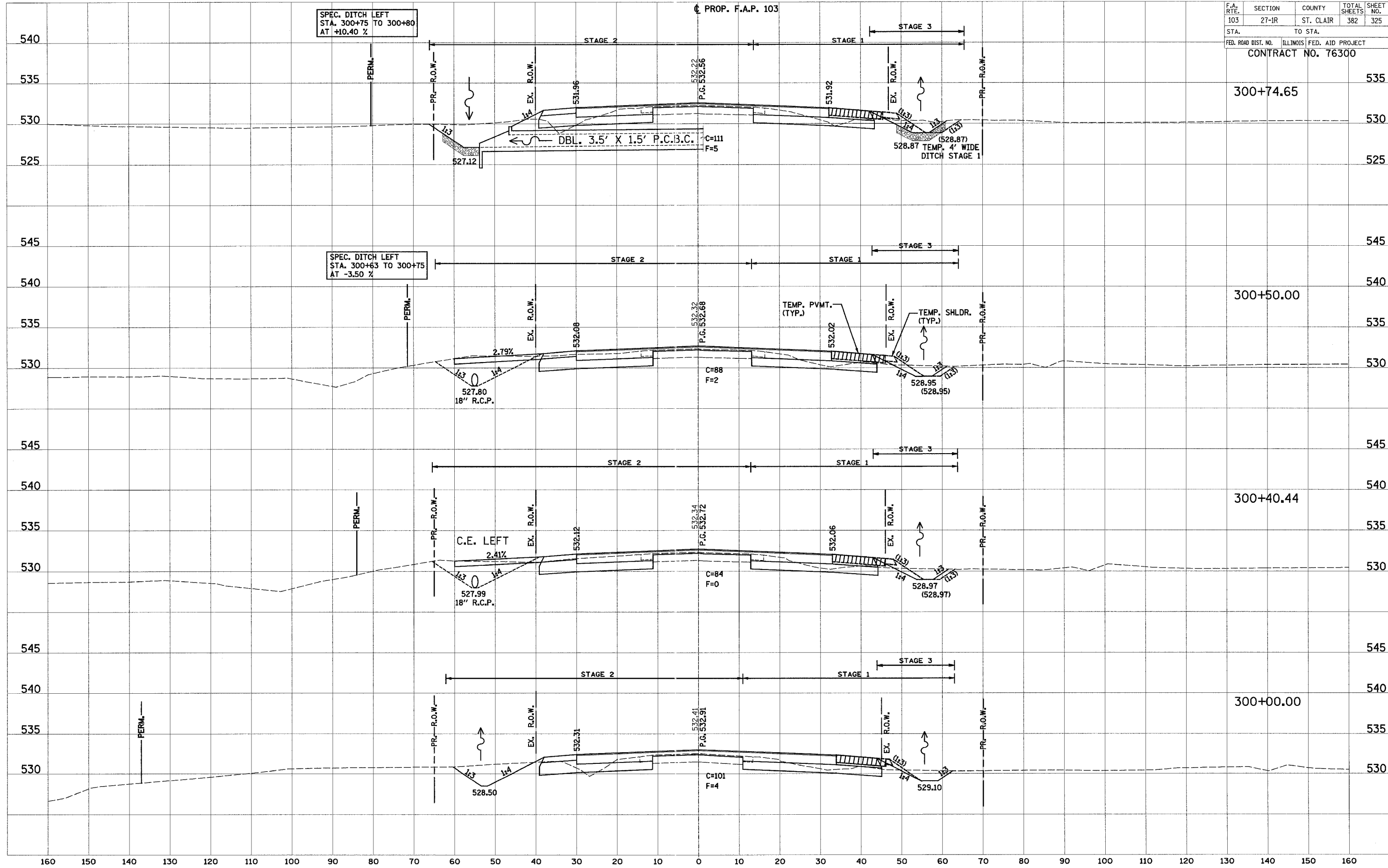
300+50.00

300+40.44

300+00.00

DATE	BY

DATE	BY



160 150 140 130 120 110 100 90 80 70 60 50 40 30 20 10 0 10 20 30 40 50 60 70 80 90 100 110 120 130 140 150 160