

CONTRACT NO. 76935			
F.A.P. RTE.	SECTION	COUNTY	TOTAL SHEETS
586	57-TS-1	MADISON	8
			SHEET NO. 1

STATE OF ILLINOIS  
DEPARTMENT OF TRANSPORTATION  
DIVISION OF HIGHWAYS

**PROPOSED  
HIGHWAY PLANS**

FAP ROUTE 586 (IL 162)  
SECTION 57-TS-1  
**PROJECT**  
MODERNIZE TRAFFIC SIGNALS  
MADISON COUNTY  
C-98-097-05

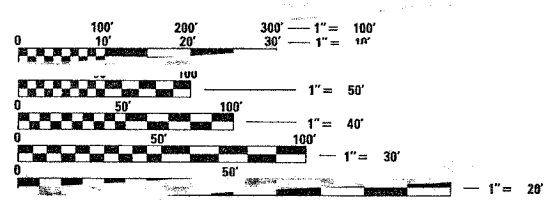
INDEX OF SHEETS

- 1 COVER SHEET
- 2 SUMMARY OF QUANTITIES
- 3 GENERAL NOTES AND LEGEND
- 4 DETAILS
- 5 PLAN SHEET - IL 162 @ MARYVILLE RD.
- 6 PLAN SHEET - IL 162 @ 23rd STREET
- 7 CABLE DIAGRAM - IL 162 @ MARYVILLE RD.
- 8 CABLE DIAGRAM - IL 162 @ 23rd STREET

STANDARDS

- 701001-01 701701-04
- 701006-02 702001-05
- 701101-01 805001
- 701106-01 857001
- 701301-02 886001
- 701501-03 886006
- 701601-04

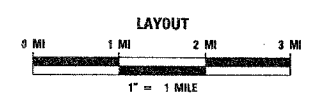
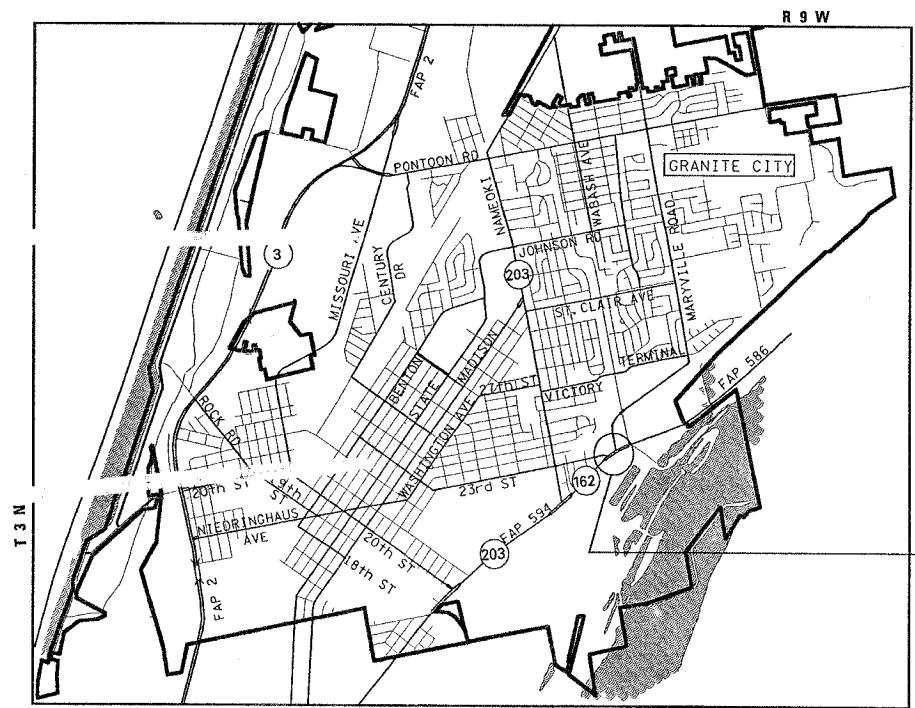
REEL NUMBER \_\_\_\_\_  
AWARDED \_\_\_\_\_  
RESIDENT ENGINEER \_\_\_\_\_  
AS BUILT CHANGES WERE MADE  
ON THE FOLLOWING SHEETS



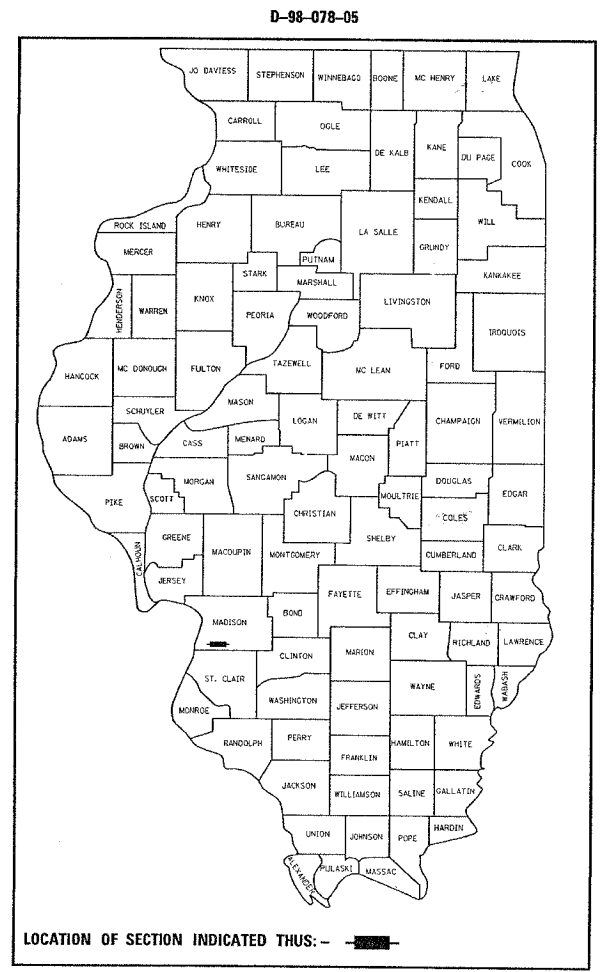
FULL SIZE PLANS HAVE BEEN PREPARED USING STANDARD ENGINEERING SCALES. REDUCED SIZED PLANS WILL NOT CONFORM TO STANDARD SCALES. IN MAKING MEASUREMENTS ON REDUCED PLANS, THE ABOVE SCALES MAY BE USED.

J.U.L.I.E.  
JOINT UTILITY LOCATION INFORMATION FOR EXCAVATION  
1-800-892-0123

CONTRACT NO. 76935



PROJECT LOCATION:  
IL 162 @ MARYVILLE ROAD  
IL 162 @ 23rd STREET



ADT-2005 (ESTIMATED)  
IL 162 EB - 7300  
IL 162 WB - 12600  
MARYVILLE RD. - 4500  
23rd STREET - 8400

STATE OF ILLINOIS  
DEPARTMENT OF TRANSPORTATION  
DIVISION OF HIGHWAYS

SUBMITTED July 6 2005  
Mary C Lanie  
DEPUTY DIRECTOR OF HIGHWAYS  
REGION FIVE ENGINEER

August 19, 20 05  
Mike Hine  
ENGINEER OF DESIGN AND ENVIRONMENT

August 19, 20 05  
Victor Moders  
DIRECTOR, DIVISION OF HIGHWAYS

**PRINTED BY THE AUTHORITY  
OF THE STATE OF ILLINOIS**

PROJECT ENGINEER: PATTI LEBE (U) (618) 346 3179  
SQUAD LEADER: B IARAT (ATEL) (618) 346 31 0

# SUMMARY OF QUANTITIES

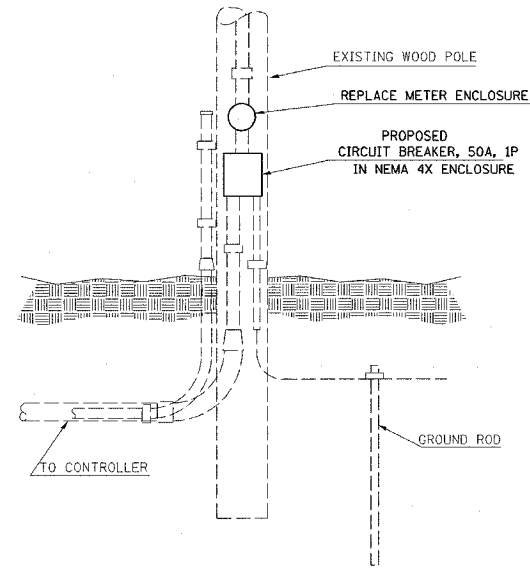
CONTRACT NO. 76935				
F.A.P. RTE.	SECTION	COUNTY	TOTAL SHEETS	SHEET NO.
586	57-TS-1	MADISON	8	2
STA.		TO STA.		
FED. ROAD DIST. NO.		ILLINOIS FED. AID PROJECT		

SUMMARY OF QUANTITIES			URBAN TOTAL QUANTITIES	CONSTRUCTION TYPE CODE : Y031-1F	
CODE NO	ITEM	UNIT		MARYVILLE RD. STATE-93.3 % LOCAL-6.7 %	23rd STREET STATE-93.3 % LOCAL-6.7 %
*20400800	FURNISHED EXCAVATION	CU YD	10	6	4
*44003900	MEDIAN SURFACE REMOVAL AND REPLACEMENT	SQ FT	490	300	190
*66900200	NON-SPECIAL WASTE DISPOSAL	CU YD	10	6	4
*66900450	SPECIAL WASTE PLANS AND REPORT	L SUM	1	0.5	0.5
*66900530	SOIL DISPOSAL ANALYSIS	EACH	1	0.5	0.5
67100100	MOBILIZATION	L SUM	1	0.5	0.5
70102620	TRAFFIC CONTROL AND PROTECTION, STANDARD 701501	L SUM	1		1
70102630	TRAFFIC CONTROL AND PROTECTION, STANDARD 701601	L SUM	1	0.5	0.5
70102635	TRAFFIC CONTROL AND PROTECTION, STANDARD 701701	L SUM	1	0.5	0.5
80300100	LOCATING UNDERGROUND CABLE	FOOT	102	17	85
80500105	SERVICE INSTALLATION, TYPE A (MODIFIED)	EACH	2	1	1
81012300	CONDUIT IN TRENCH, 1" DIA., PVC	FOOT	88	20	68
81500200	TRENCH AND BACKFILL FOR ELECTRICAL WORK	FOOT	75	15	60
86300400	CONTROLLER CABINET TYPE IV	EACH	1		1
87301305	ELECTRIC CABLE IN CONDUIT, LEAD-IN, NO. 14 1 PAIR	FOOT	650	390	260
87900100	DRILL EXISTING FOUNDATION	EACH	1		1
<del>87900200</del>	DRILL EXISTING HANDHOLE	EACH	6	3	3
88500100	INDUCTIVE LOOP DETECTOR	EACH	6	3	3
88600100	DETECTOR LOOP, TYPE I	FOOT	1040	525	515
89502350	REMOVE AND REINSTALL ELECTRIC CABLE FROM CONDUIT	FOOT	900	500	400
89502375	REMOVE EXISTING TRAFFIC SIGNAL EQUIPMENT	EACH	2	1	1

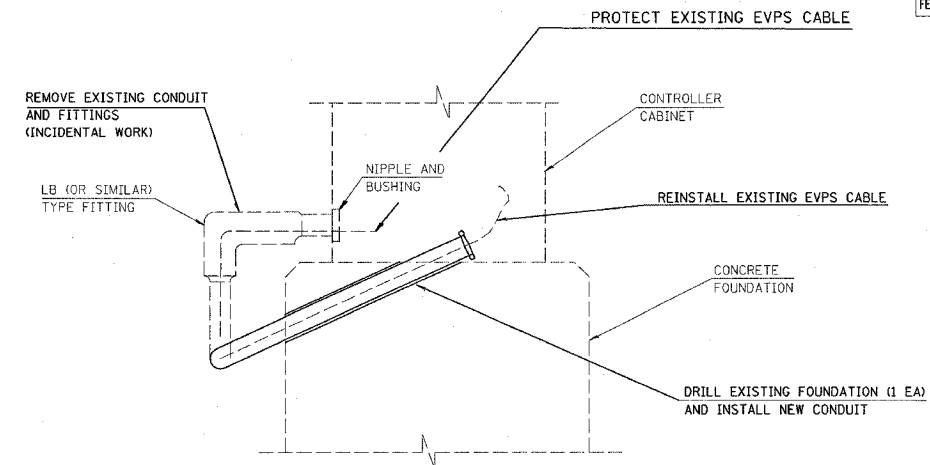
\*SPECIALTY ITEMS



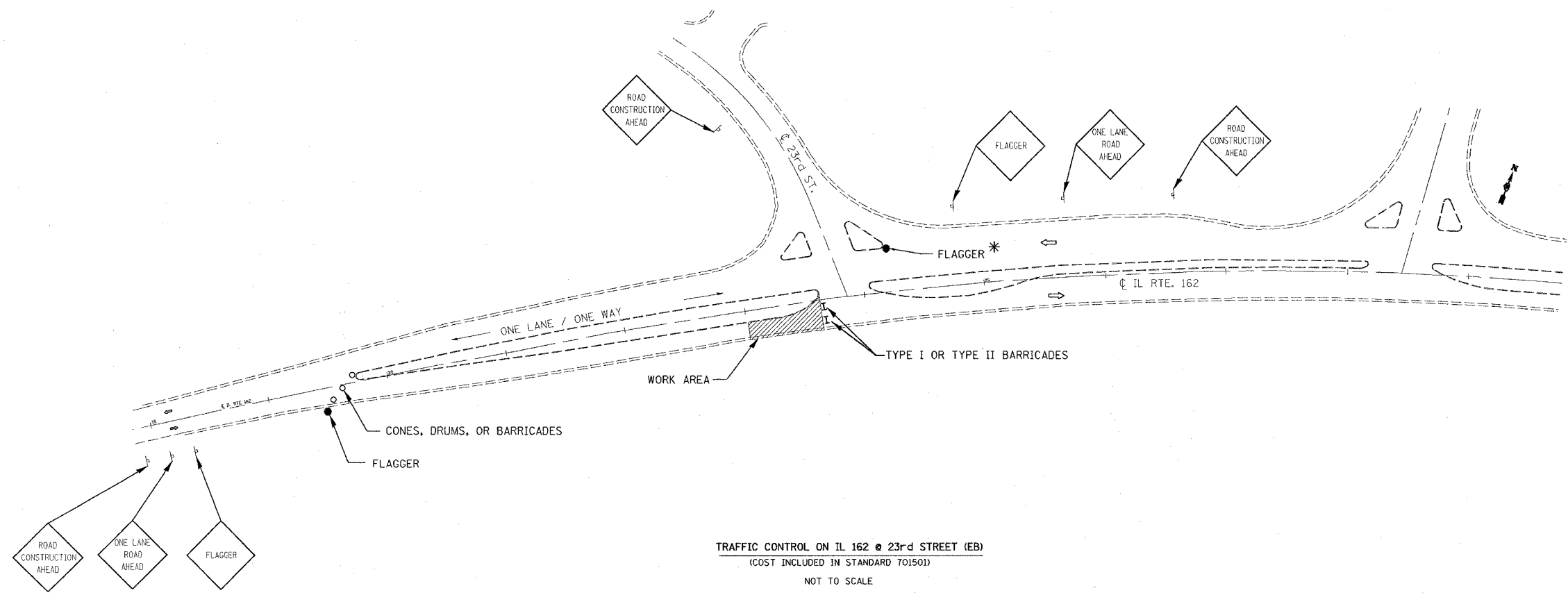
CONTRACT NO. 76935				
F.A.P. RTE.	SECTION	COUNTY	TOTAL SHEETS	SHEET NO.
586	57-TS-1	MADISON	8	4
STA.		TO STA.		
FED. ROAD DIST. NO.	ILLINOIS	FED. AID PROJECT		



**SERVICE INSTALLATION, TYPE A (MODIFIED)**  
 NOT TO SCALE  
 IL 162 @ MARYVILLE RD.  
 IL 162 @ 23rd STREET



**DETAIL**  
**CONDUIT ENTRY AT CONTROLLER CABINET**  
 NOT A PAY ITEM  
 IL 162 @ 23rd STREET



**TRAFFIC CONTROL ON IL 162 @ 23rd STREET (EB)**  
 (COST INCLUDED IN STANDARD 701501)  
 NOT TO SCALE

\* **FLAGGER** - AN ADDITIONAL FLAGGER MAY REQUIRE ON 23rd STREET AS DIRECTED BY THE ENGINEER. NO ADDITIONAL COMPENSATION WILL BE ALLOWED.

REVISIONS	
NAME	DATE

ILLINOIS DEPARTMENT OF TRANSPORTATION  
**DETAILS**  
 FAP ROUTE 586  
 SECTION 57-TS-1  
 MADISON COUNTY  
 SCALE: VERT. \_\_\_\_\_  
 HORIZ. \_\_\_\_\_  
 DATE \_\_\_\_\_  
 DRAWN BY \_\_\_\_\_  
 CHECKED BY \_\_\_\_\_

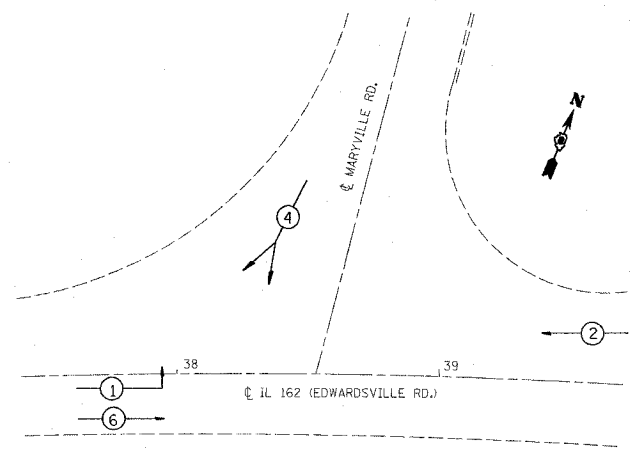
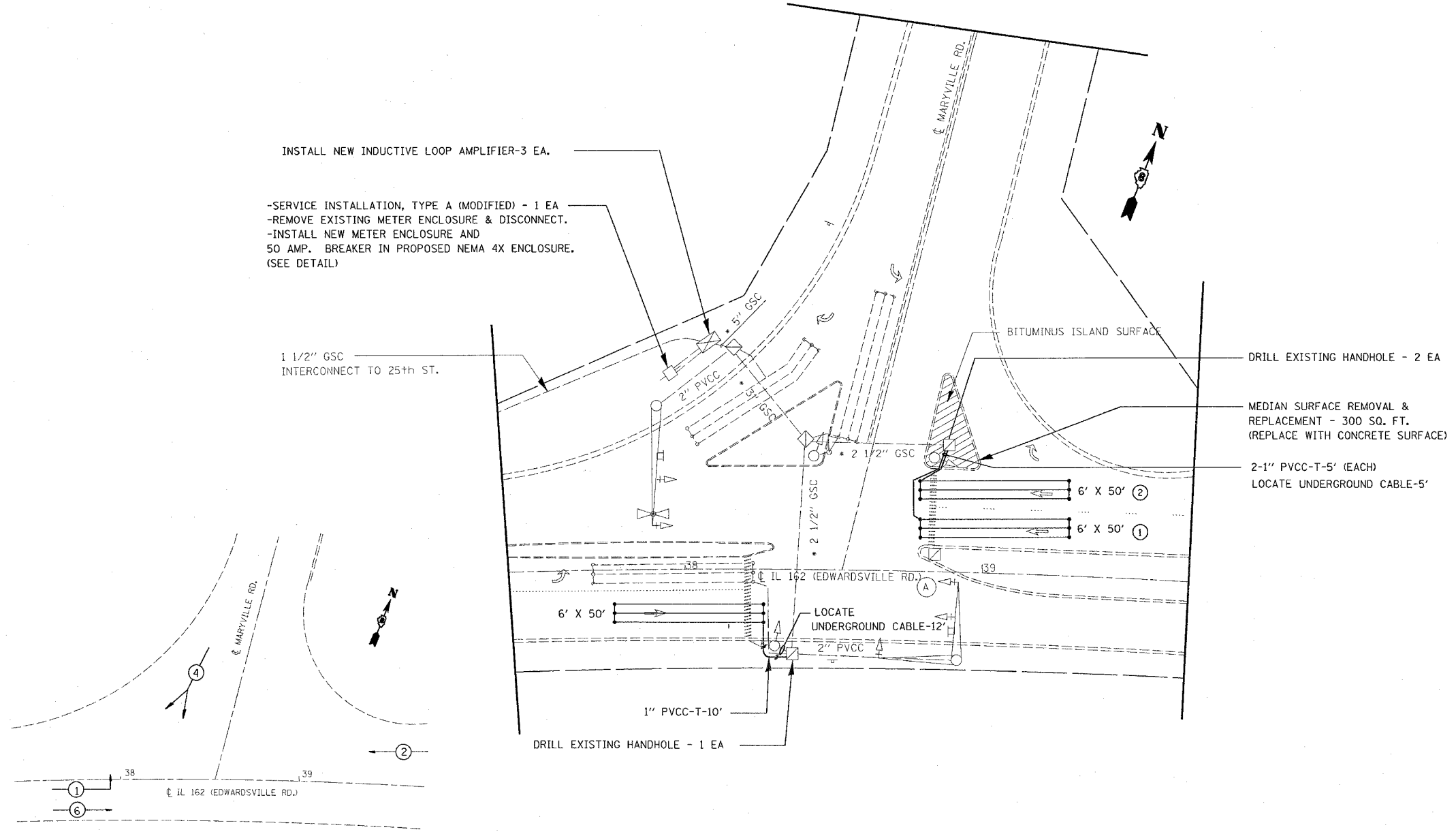
PLOT DATE = #DAYS#  
 FILE NAME = #FILE#  
 USER NAME = #USER#

F.A.P. RTE.	SECTION	COUNTY	TOTAL SHEETS	SHEET NO.
586	57-TS-1	MADISON	8	5
STA.		TO STA.		
FED. ROAD DIST. NO.	ILLINOIS	FED. AID PROJECT		

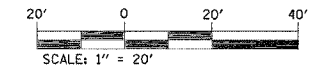
IL 162 @ MARYVILLE ROAD

EXISTING SEQUENCE OF OPERATION								
PHASE	1	2	3	4	5	6	7	8
MOVEMENT	→	←	NOT	↙	NOT	→	NOT	NOT
CONCURRENT MOVEMENT PERMITTED	6	6	USED	NONE	USED	1 OR 2	USED	USED

NOTE: EXISTING CONTROLLER IS ECONOLITE ASC 8000



PHASE DESIGNATION DIAGRAM



• REMOVE & REINSTALL ELECTRIC CABLE FROM CONDUIT - 500 FT.

PLOT DATE = #DATE#  
 FILE NAME = #FILE#  
 PLOT SCALE = #SCALE#  
 REFERENCE = #REF#

REVISIONS	
NAME	DATE

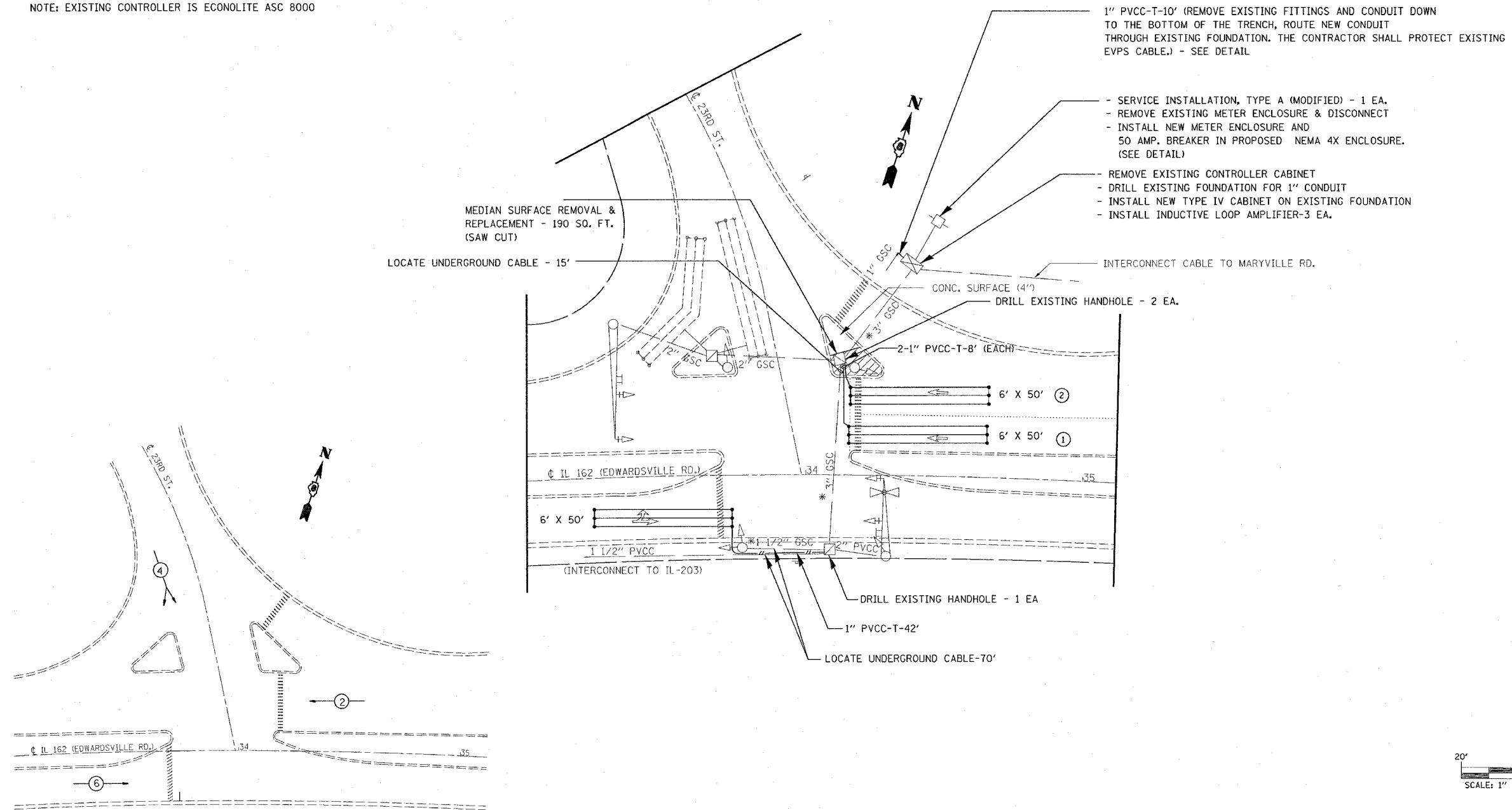
ILLINOIS DEPARTMENT OF TRANSPORTATION  
**PLAN VIEW**  
 FAP ROUTE 586  
 SECTION 57-TS-1  
 MADISON COUNTY  
 IL 162 @ MARYVILLE RD.  
 VERT. SCALE:     DRAWN BY  
 HORIZ. SCALE:     DATE  
 CHECKED BY

F.A.P. RTE.	SECTION	COUNTY	TOTAL SHEETS	SHEET NO.
586	57-TS-1	MADISON	8	6
STA.		TO STA.		
FED. ROAD DIST. NO.	ILLINOIS	FED. AID PROJECT		

IL 162 @ 23rd STREET

EXISTING SEQUENCE OF OPERATION								
PHASE	1	2	3	4	5	6	7	8
MOVEMENT	NOT	← WB	NOT	↙ SB	NOT	→ EB	NOT	NOT
CONCURRENT MOVEMENT PERMITTED	USED	6	USED	NONE	USED	2	USED	USED

NOTE: EXISTING CONTROLLER IS ECONOLITE ASC 8000



PHASE DESIGNATION DIAGRAM

\* REMOVE & REINSTALL ELECTRIC CABLE FROM CONDUIT - 400 FT.

REVISIONS	
NAME	DATE

ILLINOIS DEPARTMENT OF TRANSPORTATION

**PLAN VIEW**

FAP ROUTE 586  
SECTION 57-TS-1  
MADISON COUNTY  
IL 162 @ 23rd ST.

SCALE: VERT. DATE  
HORIZ. DRAWN BY  
CHECKED BY

PLOT DATE = #DATE#  
FILE NAME = #FILE#  
PLOT SCALE = #SCALE#  
REFERENCE = #REF#

CONTRACT NO. 76935				
F.A.P. RTE.	SECTION	COUNTY	TOTAL SHEETS	SHEET NO.
586	57-TS-1	MADISON	8	7
STA.		TO STA.		
FED. ROAD DIST. NO.	ILLINOIS	FED. AID PROJECT		



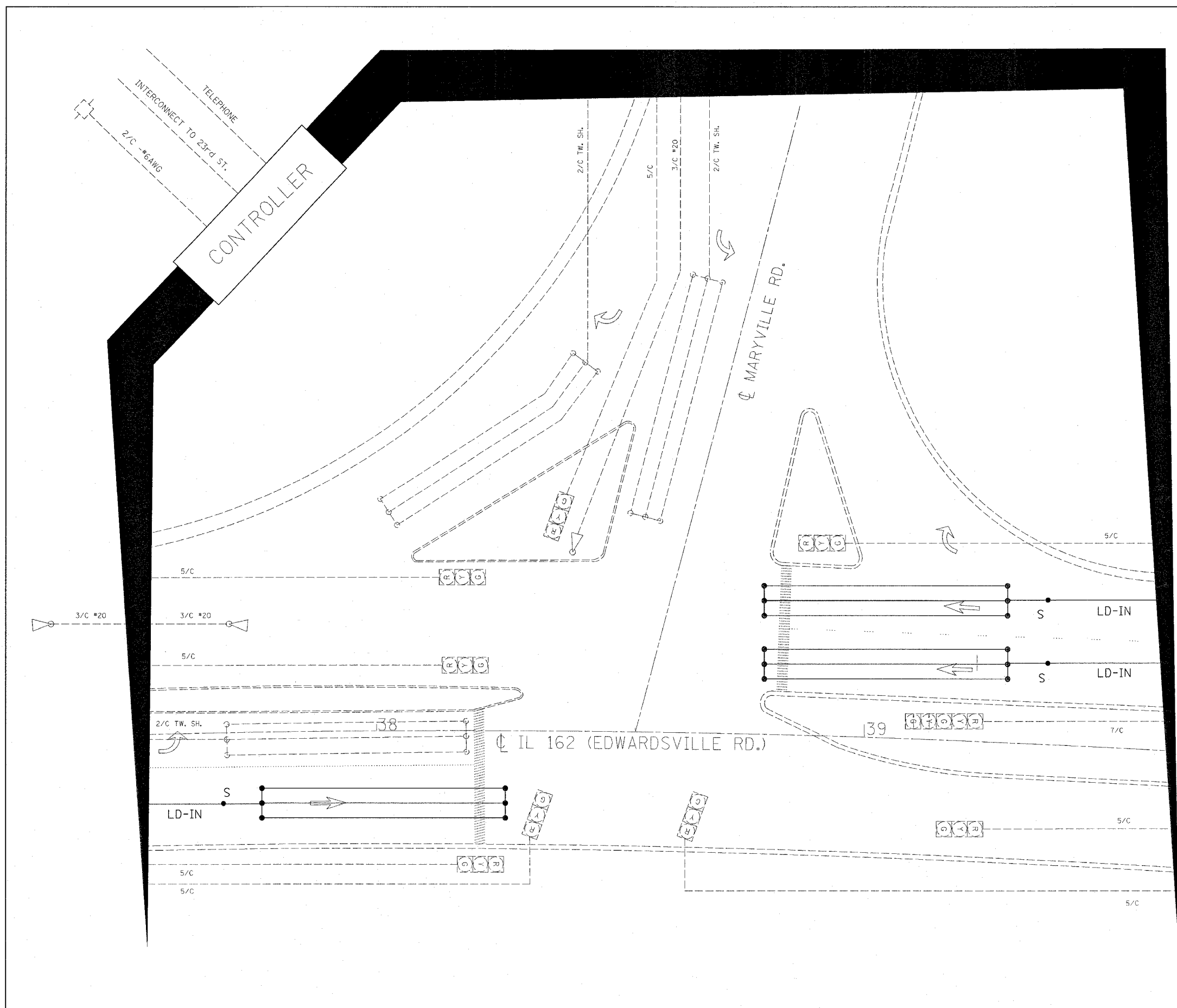
**CABLE DIAGRAM LEGEND**

- ELECTRIC CABLE IN CONDUIT
- - - EXISTING ELECTRIC CABLE IN CONDUIT
- S CABLE SPLICE (SEE GENERAL NOTES)
- 2/C INDICATES NUMBER OF CONDUCTORS IN CABLE
- LD IN ELECTRIC CABLE LEAD-IN, 1 PAIR
- {-} SERVICE INSTALLATION
- \*6 INDICATES AMERICAN WIRE GAUGE (AWG) SIZE 6 CONDUCTORS (SEE GENERAL NOTES)

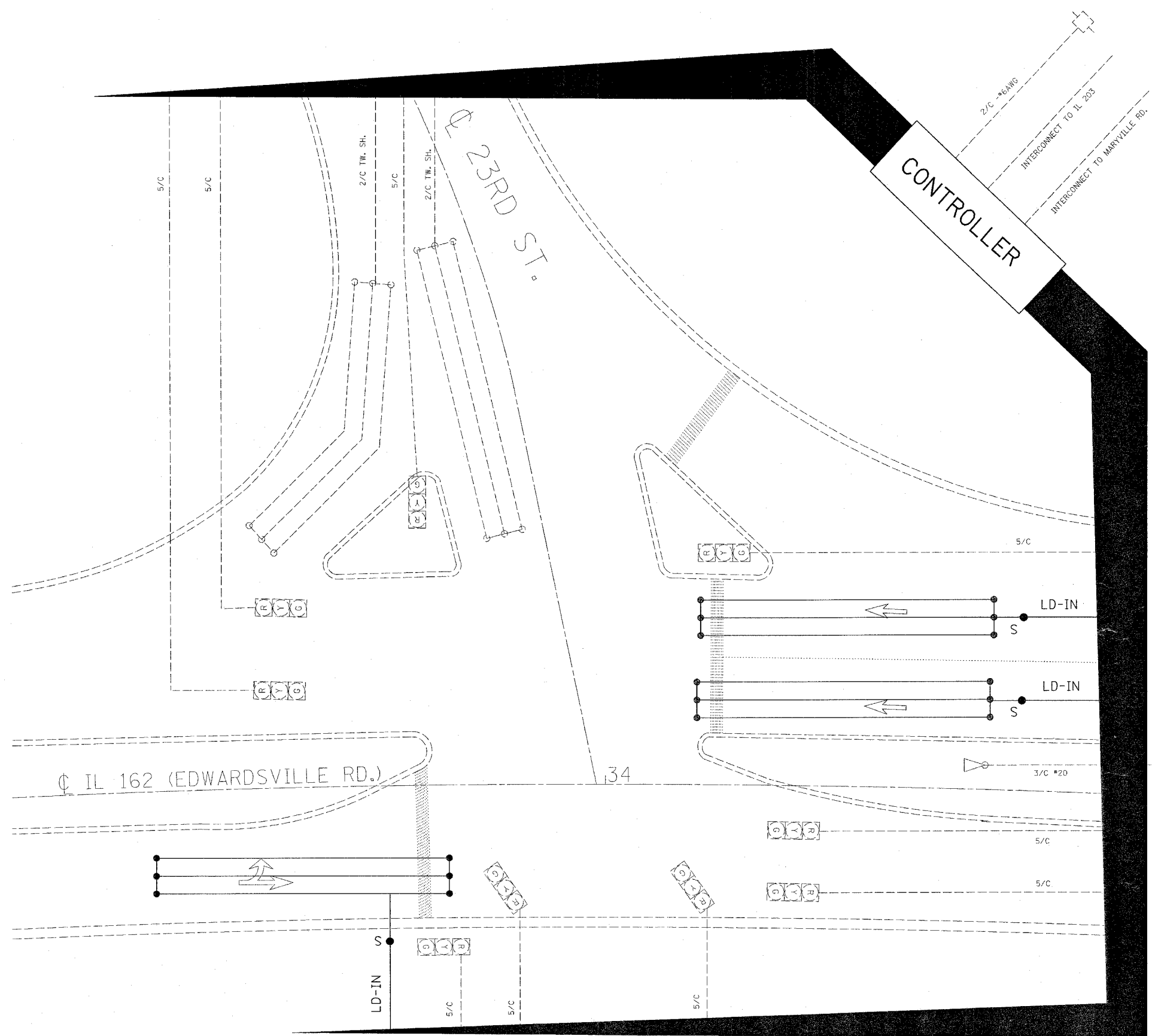
REVISIONS	
NAME	DATE

ILLINOIS DEPARTMENT OF TRANSPORTATION  
**CABLE DIAGRAM**  
 FAP ROUTE 586  
 SECTION 57-TS-1  
 MADISON COUNTY  
 IL 162 @ MARYVILLE RD.  
 SCALE: VERT.      DRAWN BY  
           HORIZ.      CHECKED BY  
 DATE

PLOT DATE = #DATE#  
 FILE NAME = #FILE#  
 USER NAME = #USER#



CONTRACT NO. 76935				
F.A.P. RTE.	SECTION	COUNTY	TOTAL SHEETS	SHEET NO.
586	57-TS-1	MADISON	8	8
STA.		TO STA.		
FED. ROAD DIST. NO.	ILLINOIS	FED. AID PROJECT		



**CABLE DIAGRAM LEGEND**

- ELECTRIC CABLE IN CONDUIT
- - - EXISTING ELECTRIC CABLE IN CONDUIT
- S CABLE SPLICE (SEE GENERAL NOTES)
- 2/C INDICATES NUMBER OF CONDUCTORS IN CABLE
- LD IN ELECTRIC CABLE LEAD-IN, 1 PAIR
- [ ] SERVICE INSTALLATION
- \*6 INDICATES AMERICAN WIRE GAUGE (AWG) SIZE 6 CONDUCTORS (SEE GENERAL NOTES)

REVISIONS	
NAME	DATE

ILLINOIS DEPARTMENT OF TRANSPORTATION  
**CABLE DIAGRAM**  
 FAP ROUTE 586  
 SECTION 57-TS-1  
 MADISON COUNTY  
 IL 162 @ 23rd ST.  
 SCALE: VERT.      DRAWN BY  
           HORIZ.      CHECKED BY  
 DATE

PLOT DATE = #DATE#  
 FILE NAME = #FILE#  
 USER NAME = #USER#