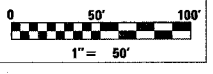
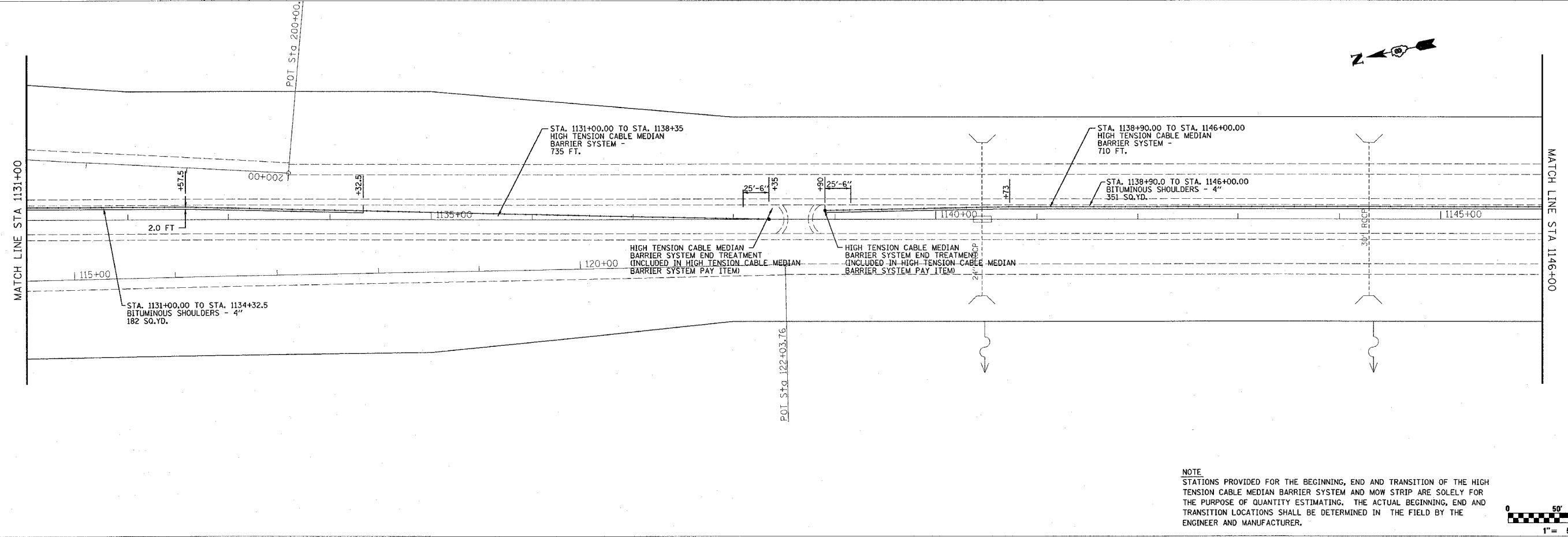
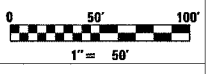
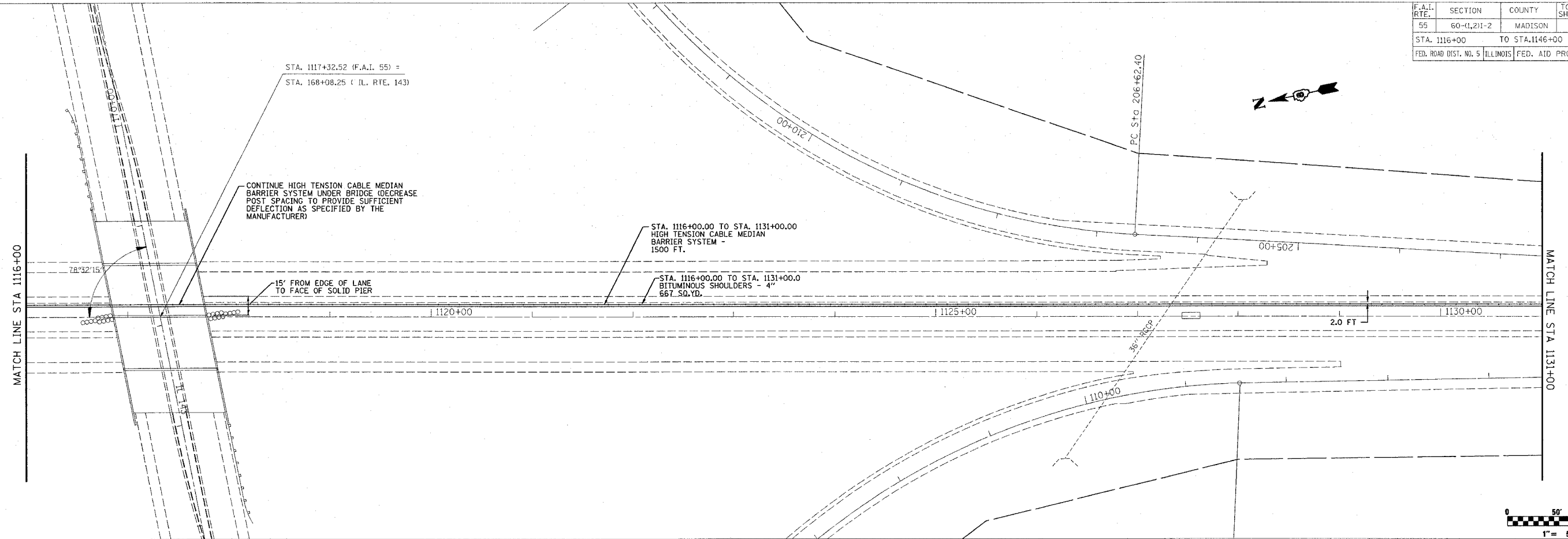


F.A.I. RTE.	SECTION	COUNTY	TOTAL SHEETS	SHEET NO.
55	60-1,211-2	MADISON	21	9
STA. 1116+00 TO STA. 1146+00				
FED. ROAD DIST. NO. 5 ILLINOIS			FED. AID PROJECT	



NOTE
 STATIONS PROVIDED FOR THE BEGINNING, END AND TRANSITION OF THE HIGH TENSION CABLE MEDIAN BARRIER SYSTEM AND MOW STRIP ARE SOLELY FOR THE PURPOSE OF QUANTITY ESTIMATING. THE ACTUAL BEGINNING, END AND TRANSITION LOCATIONS SHALL BE DETERMINED IN THE FIELD BY THE ENGINEER AND MANUFACTURER.

PLOT DATE = 7/18/2005
 FILE NAME = c:\pca\projects\76940\plan\p11-08305.dwg
 PLOT SCALE = 1/8" = 1' / IN.
 REFERENCE = 80074