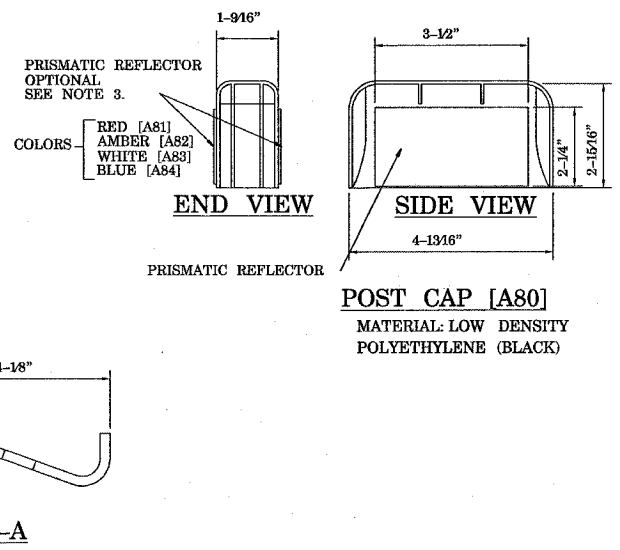
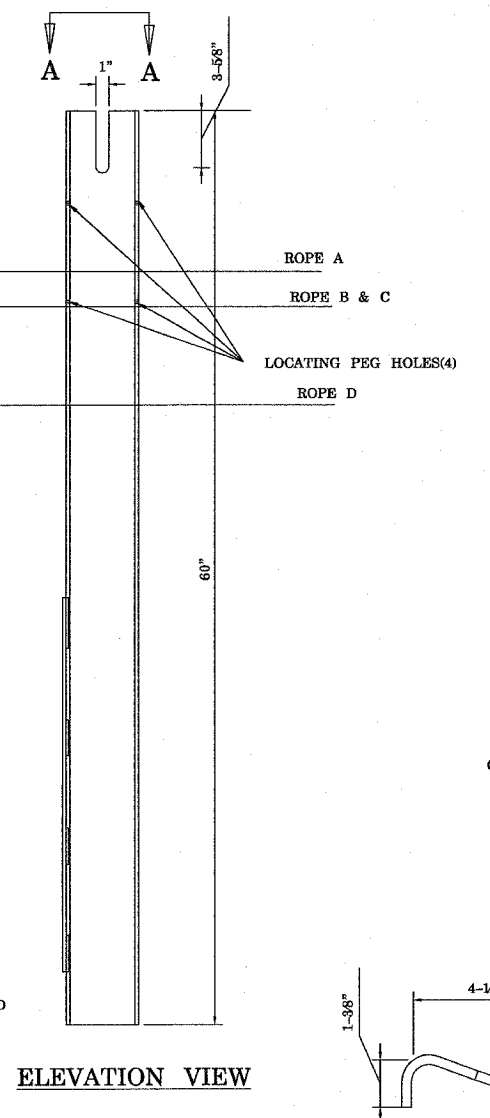
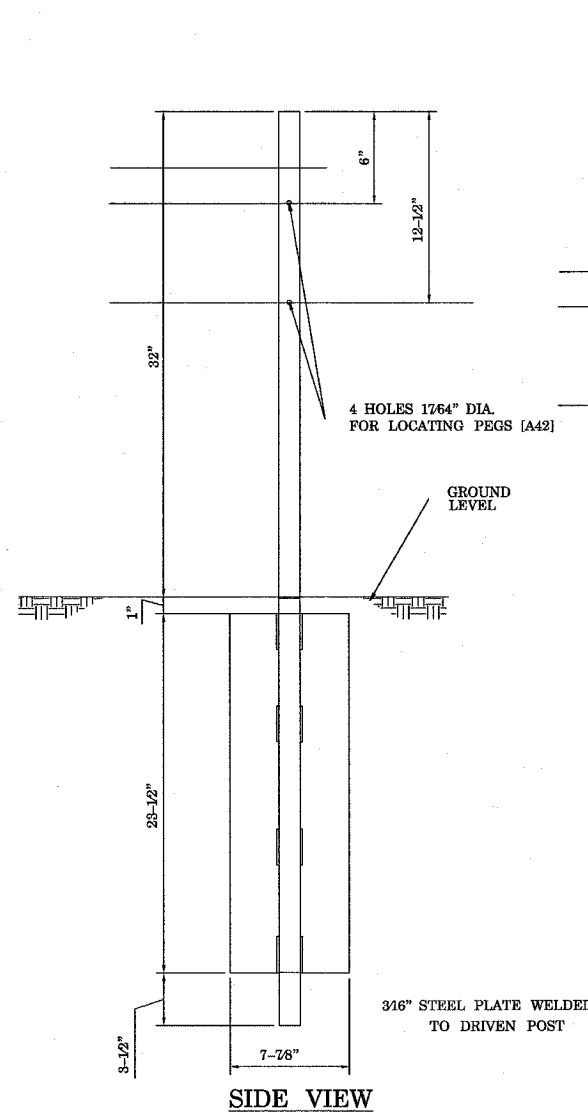
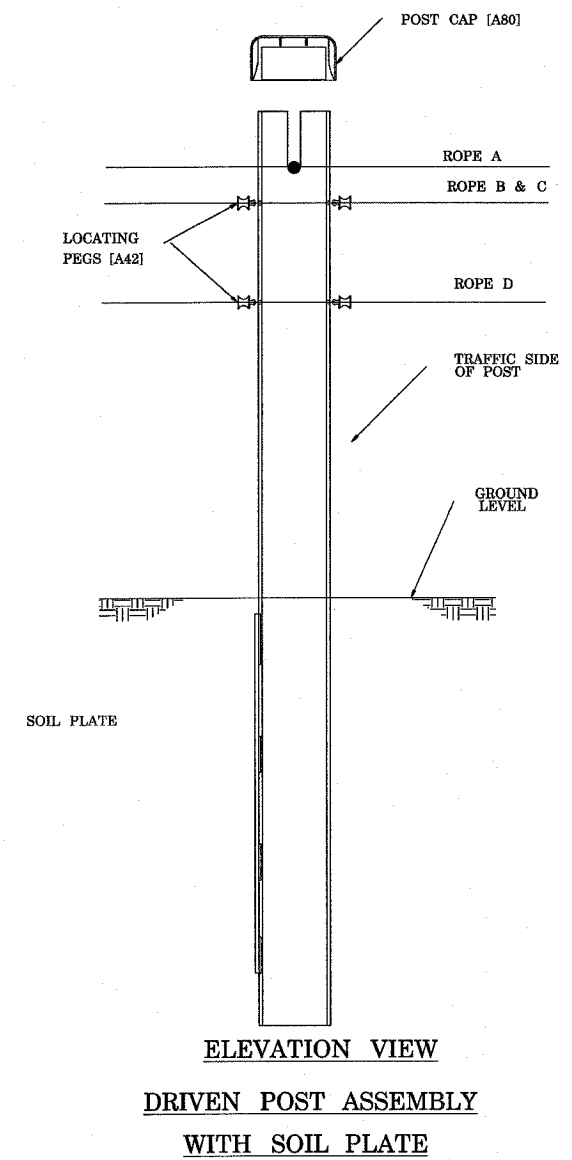
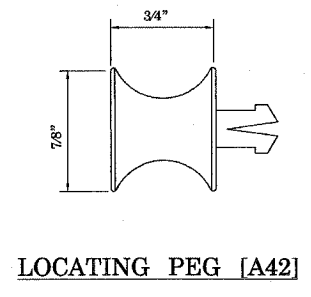
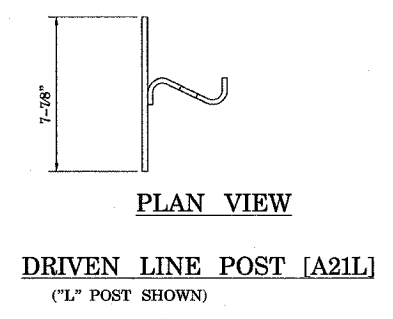
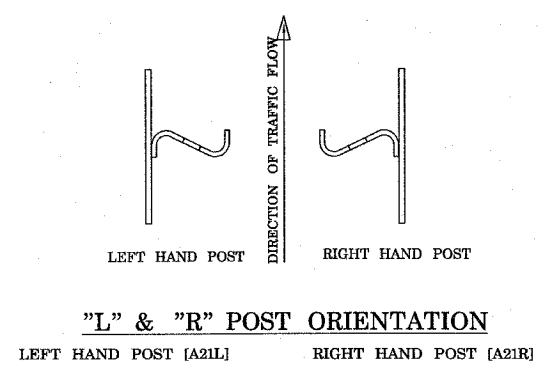


| F.A.I. RTE.           | SECTION    | COUNTY                    | TOTAL SHEETS | SHEET NO. |
|-----------------------|------------|---------------------------|--------------|-----------|
| 55                    | 60-(1,2)-2 | MADISON                   | 21           | 18        |
| STA. 996+00           |            | TO STA. 1026+00           |              |           |
| FED. ROAD DIST. NO. 5 |            | ILLINOIS FED. AID PROJECT |              |           |



- NOTES:**
1. RADIUS EDGE OF POSTS SHALL BE ON THE APPROACH SIDE OF TRAFFIC.
  2. THREE LOCATING PEGS PER POST ARE REQUIRED FOR 4-ROPES & TWO FOR 3-ROPES.
  3. PRISMATIC REFLECTIVE SHEETING (ADHESIVE BACK) WHEN SPECIFIED SHALL BE FIELD APPLIED. SPECIFY COLOR, POST INTERVAL AND SINGLE OR DOUBLE SIDED.
  4. ROPES B, C, AND D INTERWEAVE BETWEEN POSTS (4-ROPES).



The information herein is proprietary to BRIFEN USA, and shall not be disclosed, duplicated or used otherwise without the express written consent of BRIFEN USA, Inc.

| BRIFEN★USA INC. |         |    |  |                     |
|-----------------|---------|----|--|---------------------|
| Revisions       |         |    | DRIVEN LINE POST DETAIL<br>(TL-3, 4-ROPES SHOWN) |                     |
| No.             | Date    | By | Date   | Drawn By            |
| 1.              | 5.26.05 | MW | 5.17.05  | Manita Workman      |
| 2.              | 6.21.05 | MW |  |                     |
| 3.              | 6.28.05 | MW |  |                     |
| 4.              |         |    |  |                     |
| 5.              |         |    |  |                     |
|                 |         |    | Dwg. No.   | WRSF-05-206a        |
|                 |         |    |  | Scale<br>None       |
|                 |         |    |  | Sheet No.<br>6 of 9 |

PLOT DATE = 7/18/2005  
 FILE NAME = c:\p\c\refa\refa080305.dgn  
 PLOT SCALE = EN0000 / IN.  
 REFERENCE = \*REF\*