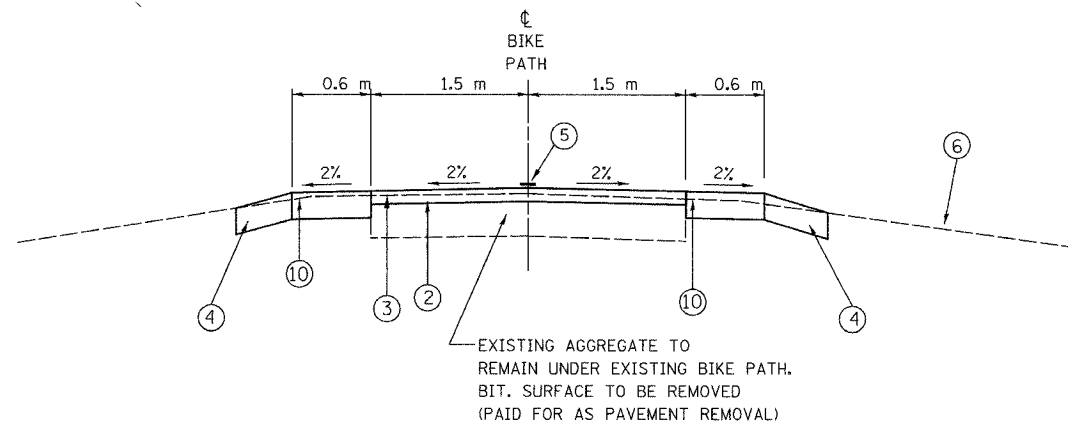


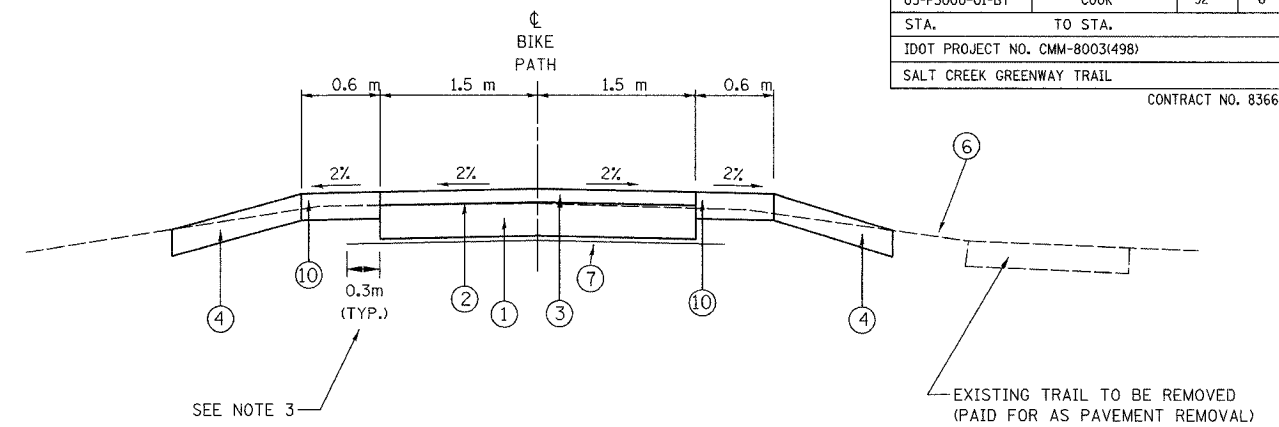
SECTION	COUNTY	TOTAL SHEETS	SHEET NO.
05-F3000-01-BT	COOK	92	6
STA. TO STA.			
IDOT PROJECT NO. CMM-8003(498)			
SALT CREEK GREENWAY TRAIL			
CONTRACT NO. 83667			



PROPOSED TYPICAL SECTION

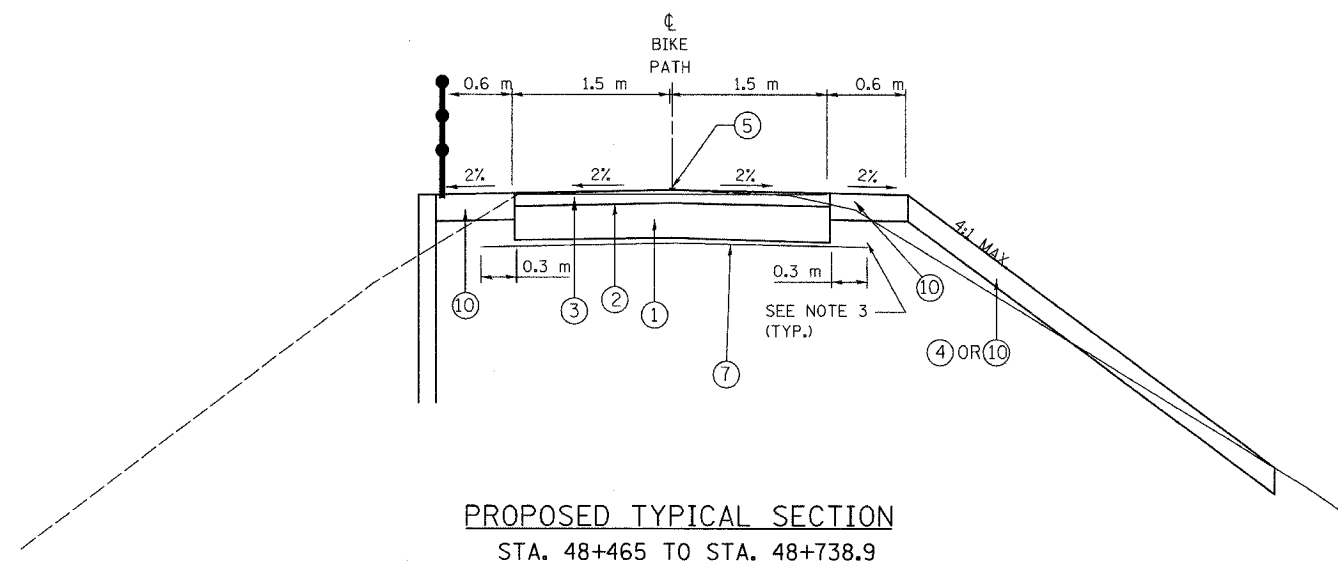
- STA. 100+000 TO STA. 100+665.1
- STA. 31+214.0 TO STA. 33+047.0
- STA. 33+464.7 TO STA. 35+200.0
- STA. 35+408.3 TO STA. 36+038.5
- STA. 36+086.1 TO STA. 36+395.3
- STA. 36+422.7 TO STA. 36+547.8
- STA. 36+585.4 TO STA. 36+622.4
- STA. 38+343.6 TO STA. 38+639.4
- STA. 36+712.7 TO STA. 37+186.9
- STA. 37+299.2 TO STA. 37+532.7
- STA. 37+559.0 TO STA. 38+283.1
- STA. 38+343.6 TO STA. 38+639.4
- STA. 38+730.1 TO STA. 40+391.1

OMISSION STA. 33+047 TO 33+464.7 (EDGEWOOD AVE.)
 STA. 35+200 TO 35+408.3 (LAGRANGE ROAD)
 STA. 37+532.7 TO 37+559 (KEMMAN AVE.)
 STA. 38+639.4 TO 38+730.1 (MAPLE AVE.)



PROPOSED TYPICAL SECTION

- STA. 36+038.5 TO STA. 36+086.1
- STA. 36+395.3 TO STA. 36+422.7
- STA. 36+547.8 TO STA. 36+585.4
- STA. 36+622.4 TO STA. 36+712.7
- STA. 37+186.9 TO STA. 37+299.2
- STA. 38+283.1 TO STA. 38+343.6



PROPOSED TYPICAL SECTION

STA. 48+465 TO STA. 48+738.9

ITEM	AC TYPE	VOIDS	RAP %	USAGE
BITUMINOUS CONCRETE SURFACE COURSE, SUPERPAVE, MIX. C, N50	PG 64-22	4% @ 50 GYR	15%	BIKE PATH SURFACE

DESIGNER USED UNIT WEIGHT 112 LBS/SQ YD/IN (2.39 KG/SM/MM) FOR CALCULATION PURPOSES

LEGEND:

- ① AGGREGATE BASE COURSE, TYPE B, 150 mm
- ② BITUMINOUS PRIME COAT
- ③ BITUMINOUS CONCRETE SURFACE COURSE, SUPERPAVE MIX "C", N50, 50 mm
- ④ 150 mm TOP SOIL AND SEEDING CLASS 4A
- ⑤ PAINT PAVEMENT MARKING, 100 mm YELLOW
- ⑥ EXISTING GROUND
- ⑦ GEOTECHNICAL FABRIC FOR GROUND STABILIZATION
- ⑧ PRECAST BLOCK RETAINING WALL
- ⑨ EXISTING SIDEWALK TO BE REMOVED
- ⑩ 150 mm TOP SOIL AND SEEDING, CLASS 1 B
- ⑪ EARTH EXCAVATION
- ⑫ SUITABLE EMBANKMENT MATERIAL (NO TOPSOIL)
- ⑬ LIMESTONE SCREENINGS 50 mm
- ⑭ SUITABLE OR UNSUITABLE EMBANKMENT MATERIAL
- ⑮ 100 mm AGGREGATE SHOULDER
- ⑯ PRECAST BLOCK RETAINING WALL CAP
- ⑰ POROUS GRANULAR BACKFILL
- ⑱ PCC SIDEWALK 150 mm
- ⑲ P.G.E. SUBGRADE 300 mm

REVISIONS		
NO.	NAME	DATE

URS 1701 GOLF ROAD, SUITE 1000 TEL (847) 228-0707
 ROLLING MEADOWS, IL 60008 FAX (847) 228-1115

FOREST PRESERVE DISTRICT OF COOK COUNTY
SALT CREEK GREENWAY TRAIL

TYPICAL SECTIONS

DATE: 7/01/05 DRAWN BY: XXX
 DESIGNED BY: MIA CHECKED BY: DDL