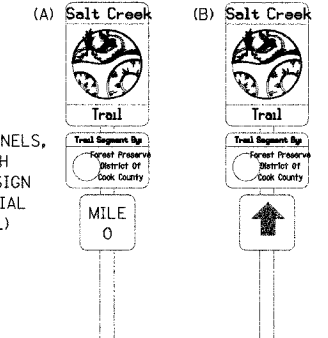


SECTION	COUNTY	TOTAL SHEETS	SHEET NO.
05-F3000-01-BT	COOK	92	9
STA. TO STA.			
IDOT PROJECT NO. CMM-8003(498)			
SALT CREEK GREENWAY TRAIL			

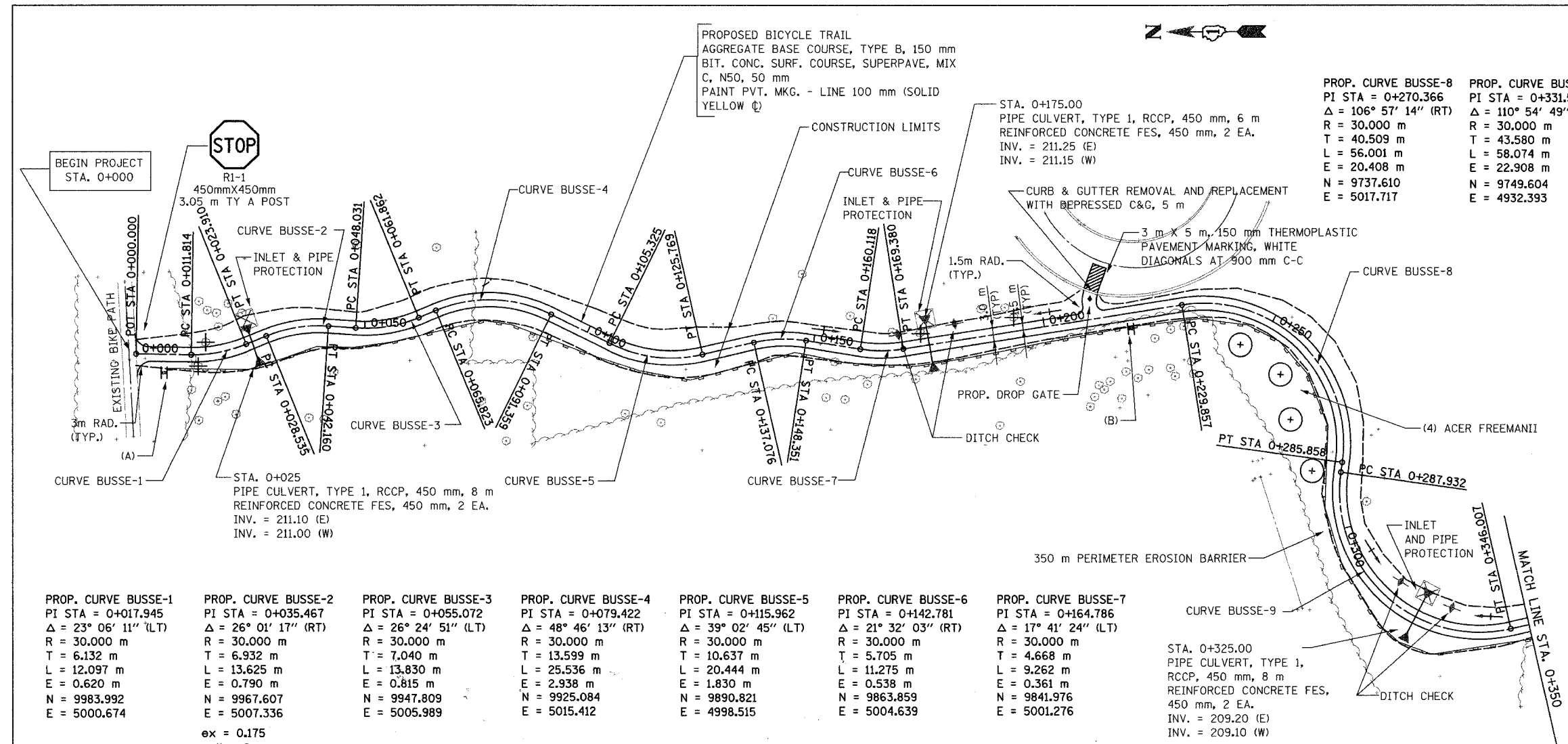
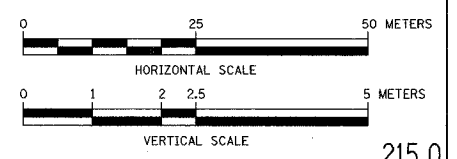
CONTRACT NO. 83667



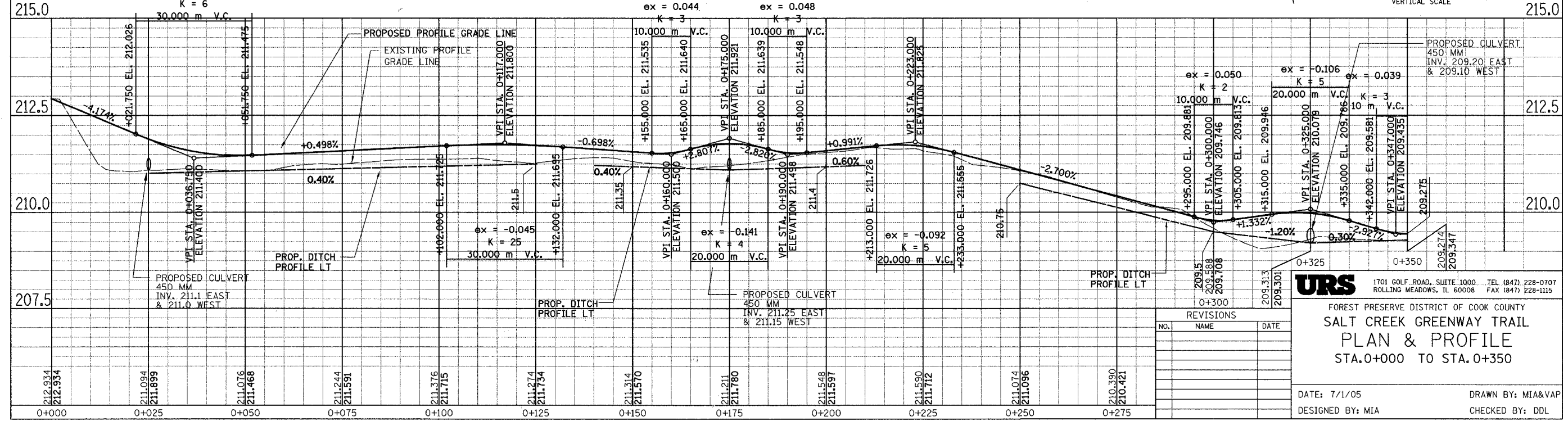
(2) SIGN PANELS, TYPE 1 WITH ALUMINUM SIGN POST, SPECIAL (SEE DETAIL)

LEGEND

- + SWALE TIP
- + DITCH SUMMIT
- + DITCH CHECK
- + PROPOSED CULVERT
- + EXISTING CULVERT
- + EXISTING MANHOLE
- + EXISTING FENCE
- + FLARED END SECTION
- + INLET AND PIPE PROTECTION
- + TREE REMOVAL
- + PERIMETER EROSION BARRIER



PROP. CURVE BUSSE-1 PI STA = 0+017.945 $\Delta = 23^\circ 06' 11''$ (LT) R = 30,000 m T = 6.132 m L = 12.097 m E = 0.620 m N = 9983.992 E = 5000.674 ex = 0.175 K = 6 30,000 m V.C.	PROP. CURVE BUSSE-2 PI STA = 0+035.467 $\Delta = 26^\circ 01' 17''$ (RT) R = 30,000 m T = 6.932 m L = 13.625 m E = 0.790 m N = 9967.607 E = 5007.336	PROP. CURVE BUSSE-3 PI STA = 0+055.072 $\Delta = 26^\circ 24' 51''$ (LT) R = 30,000 m T = 7.040 m L = 13.830 m E = 0.815 m N = 9947.809 E = 5005.989	PROP. CURVE BUSSE-4 PI STA = 0+079.422 $\Delta = 48^\circ 46' 13''$ (RT) R = 30,000 m T = 13.599 m L = 25.536 m E = 2.938 m N = 9925.084 E = 5015.412	PROP. CURVE BUSSE-5 PI STA = 0+115.962 $\Delta = 39^\circ 02' 45''$ (LT) R = 30,000 m T = 10.637 m L = 20.444 m E = 1.830 m N = 9890.821 E = 4998.515	PROP. CURVE BUSSE-6 PI STA = 0+142.781 $\Delta = 21^\circ 32' 03''$ (RT) R = 30,000 m T = 5.705 m L = 11.275 m E = 0.538 m N = 9863.859 E = 5004.639	PROP. CURVE BUSSE-7 PI STA = 0+164.786 $\Delta = 17^\circ 41' 24''$ (LT) R = 30,000 m T = 4.668 m L = 9.262 m E = 0.361 m N = 9841.976 E = 5001.276
---	---	---	--	--	---	--



REVISIONS		
NO.	NAME	DATE

URS 1701 GOLF ROAD, SUITE 1000 TEL (847) 228-0707
 ROLLING MEADOWS, IL 60008 FAX (847) 228-1115

FOREST PRESERVE DISTRICT OF COOK COUNTY
SALT CREEK GREENWAY TRAIL
PLAN & PROFILE
 STA. 0+000 TO STA. 0+350

DATE: 7/1/05 DRAWN BY: MIA&VAP
 DESIGNED BY: MIA CHECKED BY: DDL