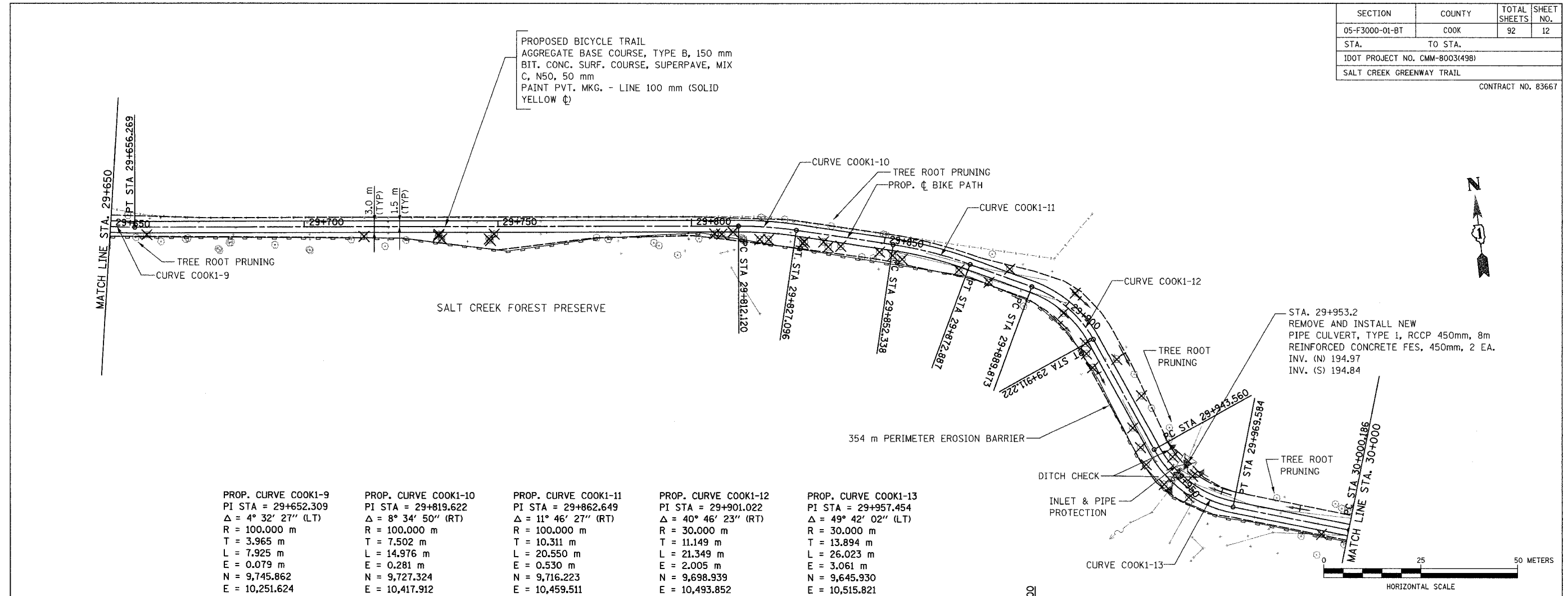
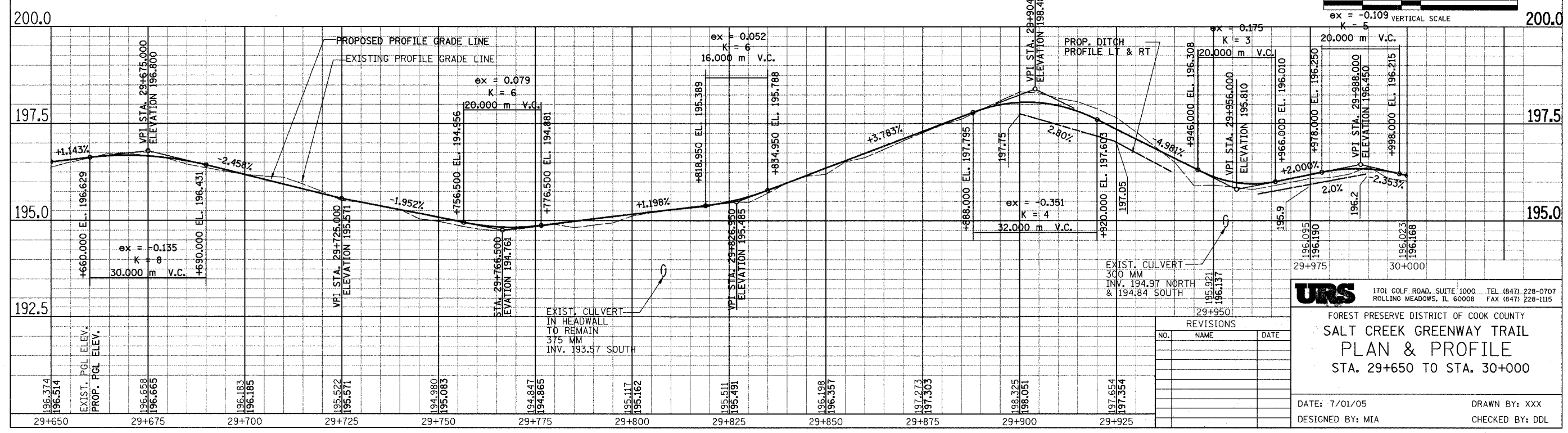


SECTION	COUNTY	TOTAL SHEETS	SHEET NO.
05-F3000-01-BT	COOK	92	12
STA. TO STA.			
IDOT PROJECT NO. CMM-8003(498)			
SALT CREEK GREENWAY TRAIL			
CONTRACT NO. 83667			



PROP. CURVE COOK1-9 PI STA = 29+652.309 $\Delta = 4^\circ 32' 27''$ (LT) R = 100.000 m T = 3.965 m L = 7.925 m E = 0.079 m N = 9,745.862 E = 10,251.624	PROP. CURVE COOK1-10 PI STA = 29+819.622 $\Delta = 8^\circ 34' 50''$ (RT) R = 100.000 m T = 7.502 m L = 14.976 m E = 0.281 m N = 9,727.324 E = 10,417.912	PROP. CURVE COOK1-11 PI STA = 29+862.649 $\Delta = 11^\circ 46' 27''$ (RT) R = 100.000 m T = 10.311 m L = 20.550 m E = 0.530 m N = 9,716.223 E = 10,459.511	PROP. CURVE COOK1-12 PI STA = 29+901.022 $\Delta = 40^\circ 46' 23''$ (RT) R = 30.000 m T = 11.149 m L = 21.349 m E = 2.005 m N = 9,698.939 E = 10,493.852	PROP. CURVE COOK1-13 PI STA = 29+957.454 $\Delta = 49^\circ 42' 02''$ (LT) R = 30.000 m T = 13.894 m L = 26.023 m E = 3.061 m N = 9,645.930 E = 10,515.821
---	---	---	--	--



URS 1701 GOLF ROAD, SUITE 1000 TEL (847) 228-0707
 ROLLING MEADOWS, IL 60008 FAX (847) 228-1115

FOREST PRESERVE DISTRICT OF COOK COUNTY
SALT CREEK GREENWAY TRAIL
PLAN & PROFILE
 STA. 29+650 TO STA. 30+000

NO.	NAME	DATE

DATE: 7/01/05 DRAWN BY: XXX
 DESIGNED BY: MIA CHECKED BY: DDL