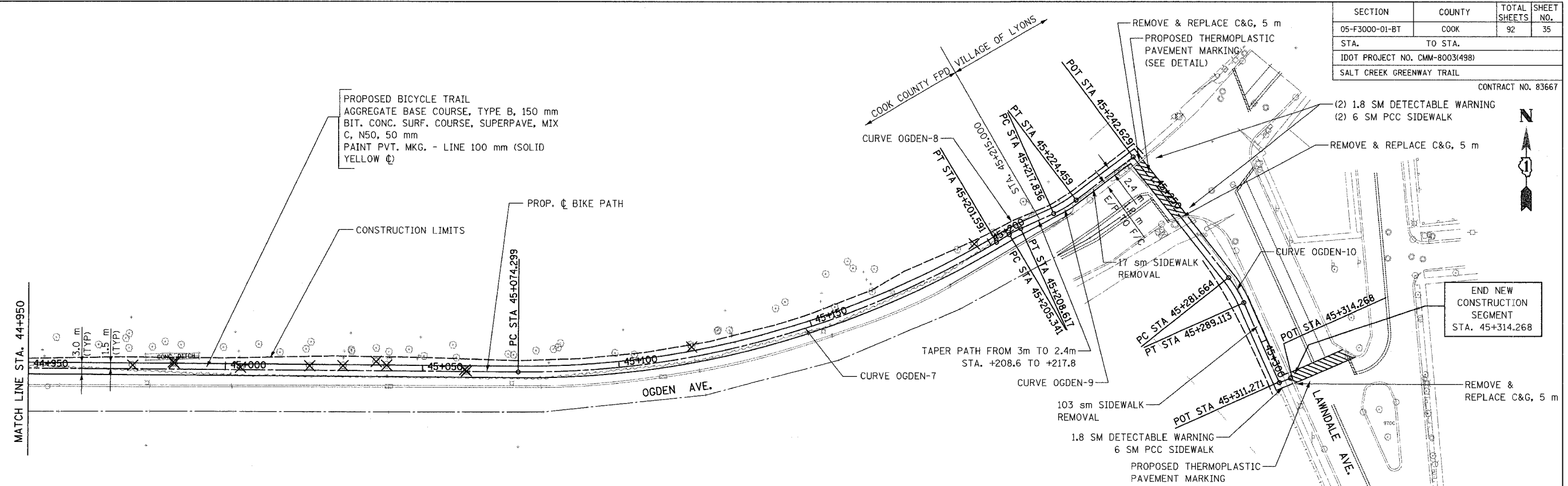


SECTION	COUNTY	TOTAL SHEETS	SHEET NO.
05-F3000-01-BT	COOK	92	35
STA.	TO STA.		
IDOT PROJECT NO. CMM-8003(498)			
SALT CREEK GREENWAY TRAIL			

CONTRACT NO. 83667

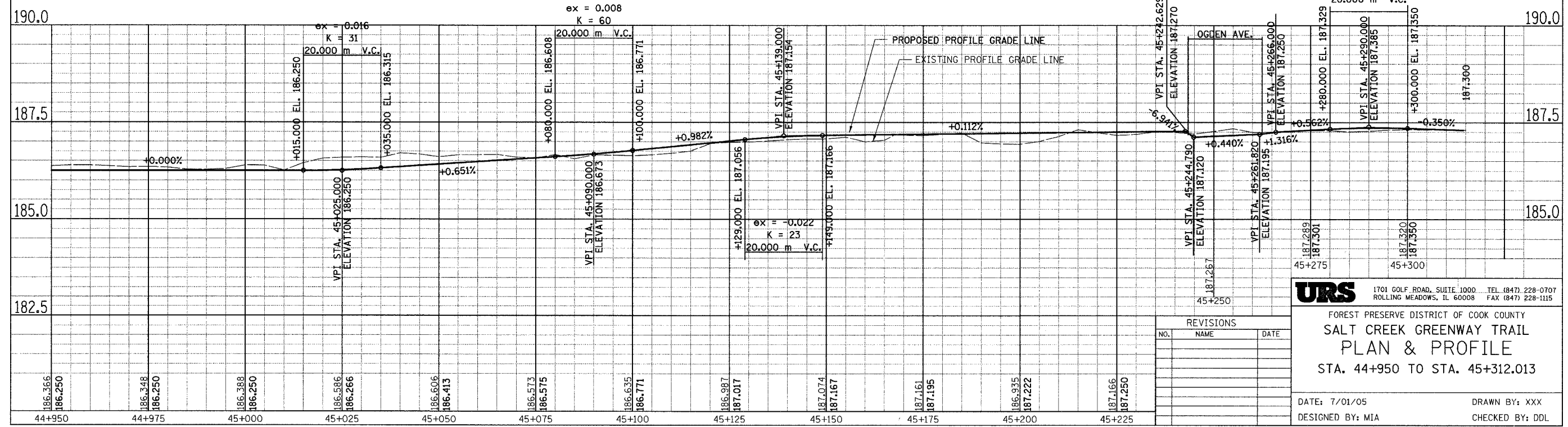
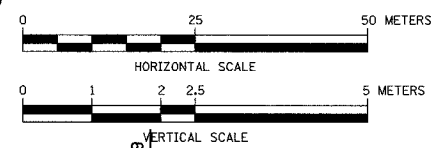


PROP. CURVE OGDEN2-7
 PI STA = 45+139.565
 $\Delta = 31^\circ 11' 40''$ (LT)
 R = 233.800 m
 T = 65.266 m
 L = 127.292 m
 E = 8.939 m
 N = 35,018.216
 E = 18,492.547

PROP. CURVE OGDEN2-8
 PI STA = 45+206.980
 $\Delta = 6^\circ 15' 24''$ (RT)
 R = 30,000 m
 T = 1.640 m
 L = 3.276 m
 E = 0.045 m
 N = 35,054.377
 E = 18,553.247

PROP. CURVE OGDEN2-9
 PI STA = 45+221.161
 $\Delta = 12^\circ 38' 58''$ (LT)
 R = 30,000 m
 T = 3.325 m
 L = 6.623 m
 E = 0.184 m
 N = 35,060.265
 E = 18,566.151

PROP. CURVE OGDEN2-10
 PI STA = 45+285.408
 $\Delta = 14^\circ 13' 39''$ (RT)
 R = 30,001 m
 T = 3.744 m
 L = 7.450 m
 E = 0.233 m
 N = 35,039.679
 E = 18,609.788



REVISIONS		
NO.	NAME	DATE

URS 1701 GOLF ROAD, SUITE 1000 TEL (847) 228-0707
 ROLLING MEADOWS, IL 60008 FAX (847) 228-1115

FOREST PRESERVE DISTRICT OF COOK COUNTY
**SALT CREEK GREENWAY TRAIL
 PLAN & PROFILE**
 STA. 44+950 TO STA. 45+312.013

DATE: 7/01/05 DRAWN BY: XXX
 DESIGNED BY: MIA CHECKED BY: DDL