

SECTION	COUNTY	TOTAL SHEETS	SHEET NO.
05-F3000-01-BT	COOK	92	37
STA. TO STA.			
IDOT PROJECT NO. CMM-80031498)			
SALT CREEK GREENWAY TRAIL			
CONTRACT NO. 83667			

BEGIN NEW SEGMENT CONSTRUCTION
 STA. 46+940.000
 N = 4,029.957
 E = 2,938.031



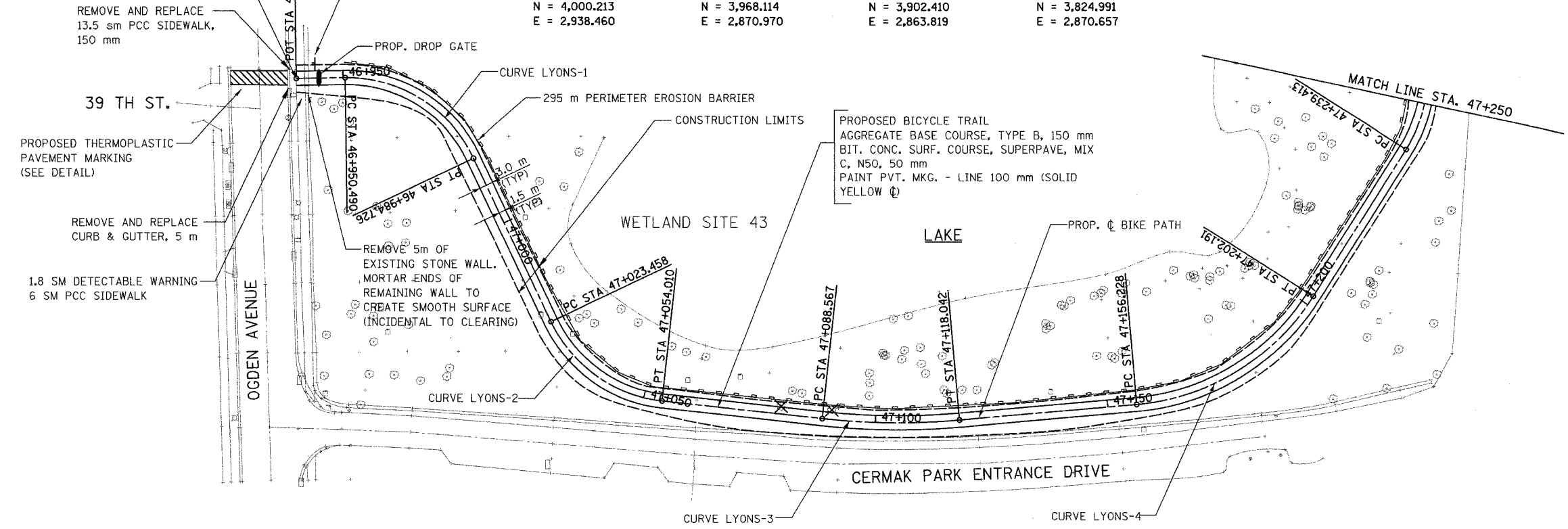
R1-1
 450mmX450mm
 3.05 m TY A POST

PROP. CURVE LYONS-1
 PI STA = 46+969.744
 $\Delta = 65^\circ 23' 10''$ (RT)
 R = 30.000 m
 T = 19.255 m
 L = 34.236 m
 E = 5.647 m
 N = 4,000.213
 E = 2,938.460

PROP. CURVE LYONS-2
 PI STA = 47+040.207
 $\Delta = 58^\circ 21' 01''$ (LT)
 R = 30.000 m
 T = 16.749 m
 L = 30.552 m
 E = 4.359 m
 N = 3,968.114
 E = 2,870.970

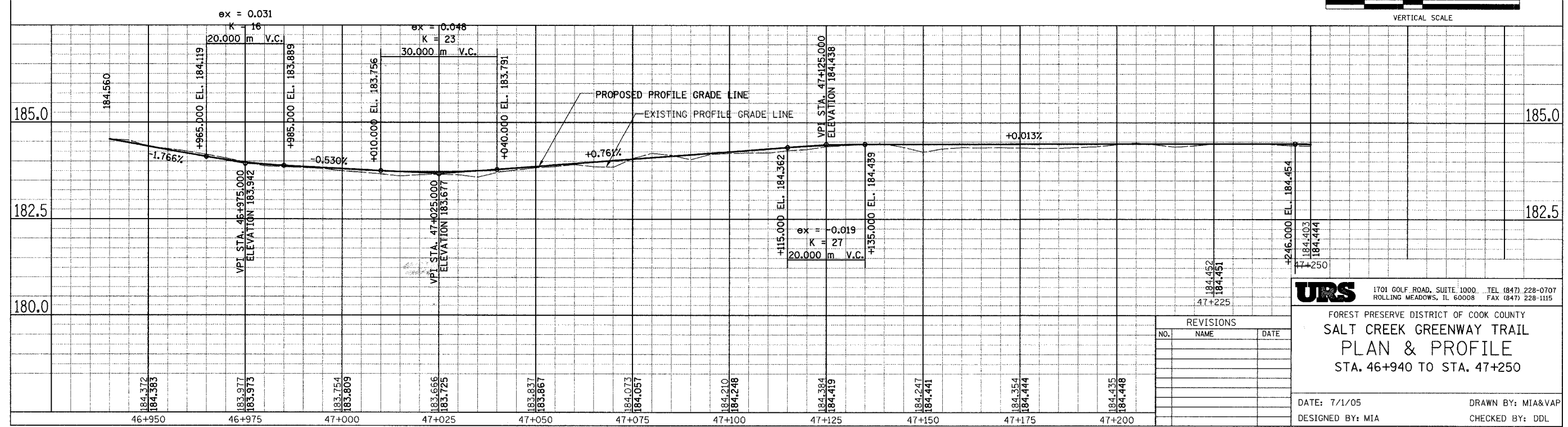
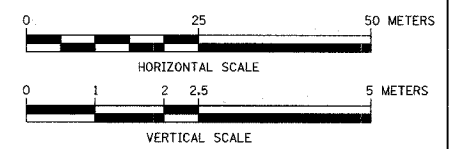
PROP. CURVE LYONS-3
 PI STA = 47+103.352
 $\Delta = 11^\circ 15' 31''$ (LT)
 R = 150.000 m
 T = 14.785 m
 L = 29.475 m
 E = 0.727 m
 N = 3,902.410
 E = 2,863.819

PROP. CURVE LYONS-4
 PI STA = 47+180.977
 $\Delta = 52^\circ 40' 11''$ (LT)
 R = 50.000 m
 T = 24.749 m
 L = 45.963 m
 E = 5.790 m
 N = 3,824.991
 E = 2,870.657



LEGEND

- SWALE TIP
- DITCH SUMMIT
- DITCH CHECK
- PROPOSED CULVERT
- EXISTING CULVERT
- EXISTING MANHOLE
- EXISTING FENCE
- FLARED END SECTION
- INLET AND PIPE PROTECTION
- TREE REMOVAL
- PERIMETER EROSION BARRIER



REVISIONS

NO.	NAME	DATE

URS 1701 GOLF ROAD, SUITE 1000 TEL (847) 228-0707
 ROLLING MEADOWS, IL 60008 FAX (847) 228-1115

FOREST PRESERVE DISTRICT OF COOK COUNTY
SALT CREEK GREENWAY TRAIL
PLAN & PROFILE
 STA. 46+940 TO STA. 47+250

DATE: 7/1/05 DRAWN BY: MIA&VAP
 DESIGNED BY: MIA CHECKED BY: DDL