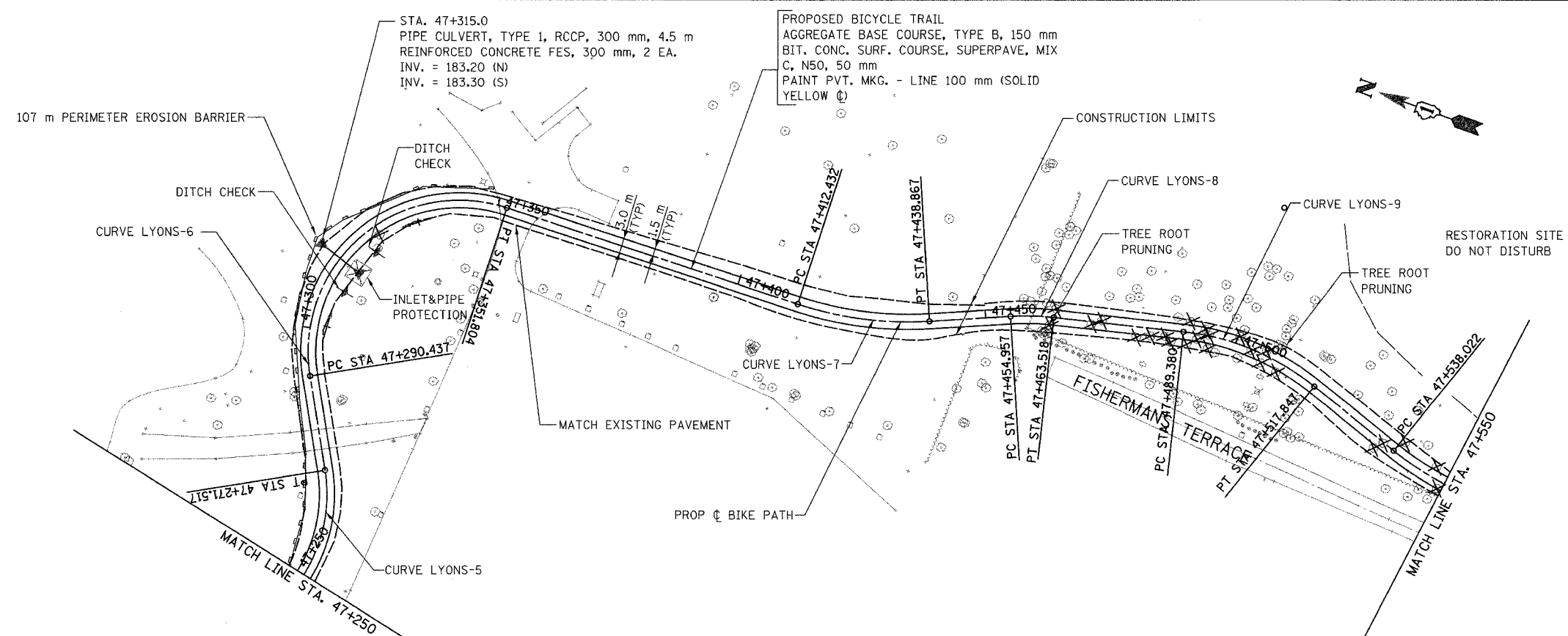
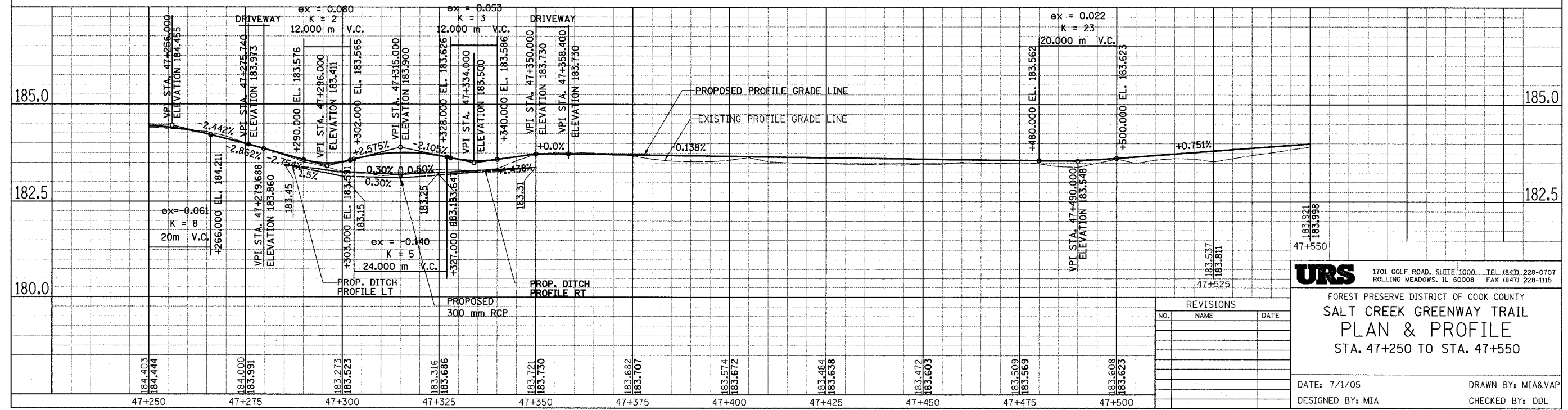
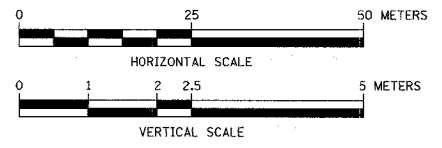


SECTION	COUNTY	TOTAL SHEETS	SHEET NO.
05-F3000-01-BT	COOK	92	38
STA. TO STA.			
IDOT PROJECT NO. CMM-8003(498)			
SALT CREEK GREENWAY TRAIL			
CONTRACT NO. 83667			



PROP. CURVE LYONS-5	PROP. CURVE LYONS-6	PROP. CURVE LYONS-7	PROP. CURVE LYONS-8	PROP. CURVE LYONS-9
PI STA = 47+257.195	PI STA = 47+339.587	PI STA = 47+425.809	PI STA = 47+459.248	PI STA = 47+504.011
$\Delta = 61^\circ 18' 54''$ (LT)	$\Delta = 117^\circ 12' 07''$ (RT)	$\Delta = 21^\circ 38' 13''$ (LT)	$\Delta = 9^\circ 48' 38''$ (RT)	$\Delta = 32^\circ 37' 13''$ (RT)
R = 30.000 m	R = 30.000 m	R = 70.000 m	R = 50.000 m	R = 50.000 m
T = 17.783 m	T = 49.150 m	T = 13.377 m	T = 4.291 m	T = 14.631 m
L = 32.104 m	L = 61.367 m	L = 26.435 m	L = 8.561 m	L = 28.467 m
E = 4.874 m	E = 27.582 m	E = 1.267 m	E = 0.184 m	E = 2.097 m
N = 3,782.395	N = 3,824.059	N = 3,700.968	N = 3,670.002	N = 3,626.484
E = 2,938.083	E = 3,013.148	E = 3,017.082	E = 3,030.525	E = 3,041.098

FOR LEGEND SEE SHEET NO. 37



URS 1701 GOLF ROAD, SUITE 1000 TEL (847) 228-0707
 ROLLING MEADOWS, IL 60008 FAX (847) 228-1115

FOREST PRESERVE DISTRICT OF COOK COUNTY
**SALT CREEK GREENWAY TRAIL
 PLAN & PROFILE
 STA. 47+250 TO STA. 47+550**

DATE: 7/1/05 DRAWN BY: MIA&VAP
 DESIGNED BY: MIA CHECKED BY: DDL

REVISIONS		
NO.	NAME	DATE