
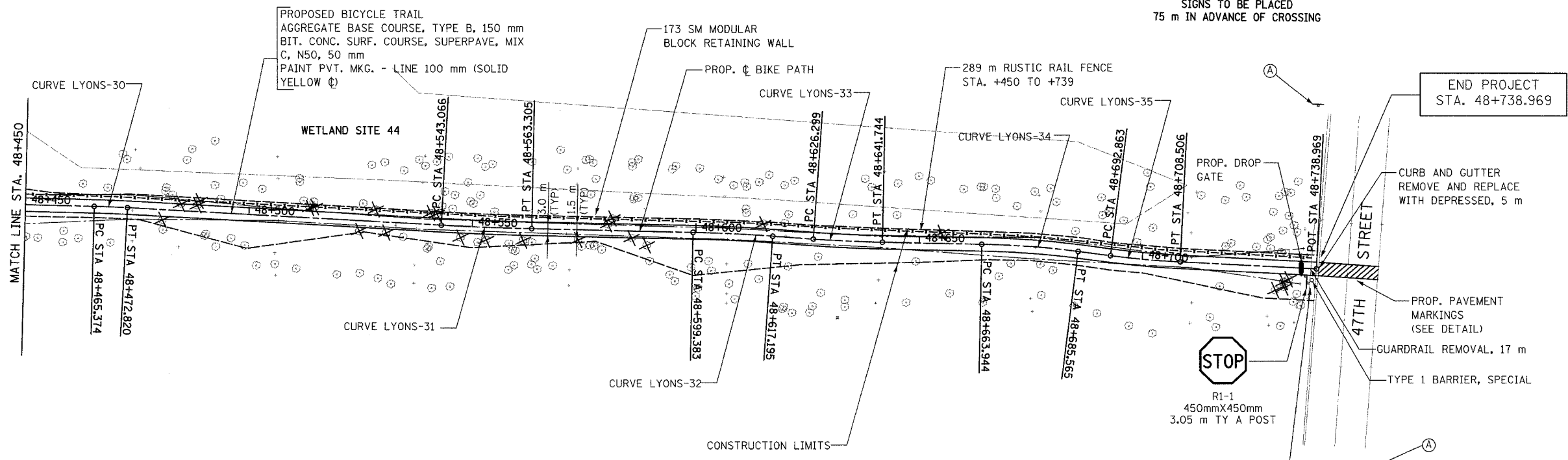


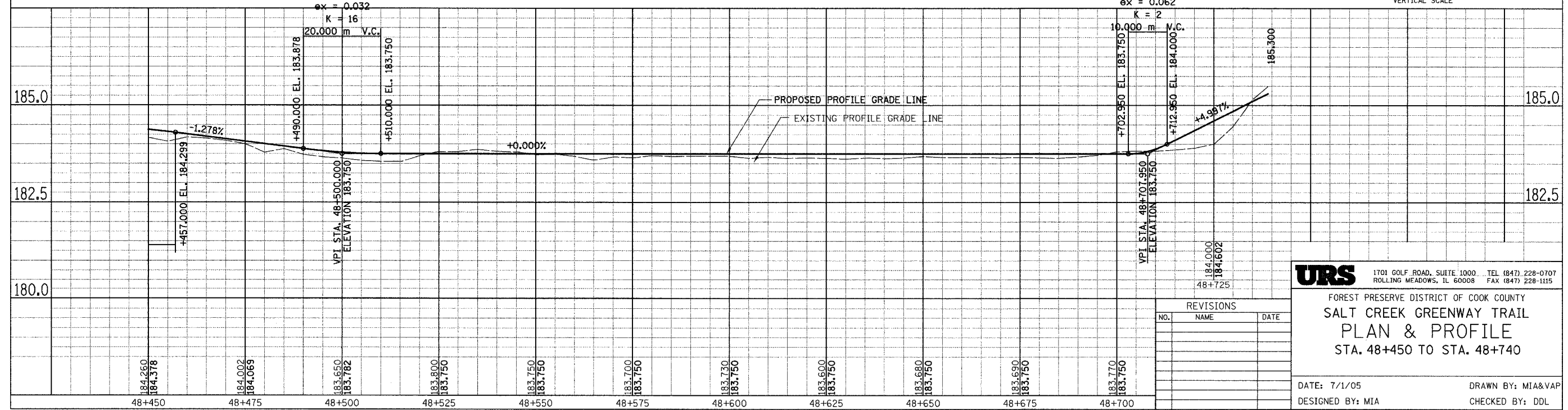
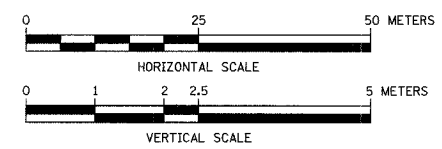
SECTION	COUNTY	TOTAL SHEETS	SHEET NO.
05-F3000-01-BT	COOK	92	42
STA. TO STA.			
IDOT PROJECT NO. CMM-8003(498)			
SALT CREEK GREENWAY TRAIL			
CONTRACT NO. 83667			

PROP. CURVE LYONS-30 PI STA = 48+469.097 $\Delta = 1^\circ 42' 23''$ (RT) R = 250.000 m T = 3.723 m L = 7.446 m E = 0.028 m N = 2,728.190 E = 2,996.334	PROP. CURVE LYONS-31 PI STA = 48+553.186 $\Delta = 1^\circ 55' 58''$ (LT) R = 600.000 m T = 10.121 m L = 20.240 m E = 0.085 m N = 2,644.226 E = 2,991.738	PROP. CURVE LYONS-32 PI STA = 48+608.291 $\Delta = 2^\circ 54' 57''$ (RT) R = 350.000 m T = 8.908 m L = 17.812 m E = 0.113 m N = 2,589.132 E = 2,990.584	PROP. CURVE LYONS-33 PI STA = 48+634.023 $\Delta = 2^\circ 56' 59''$ (LT) R = 300.000 m T = 7.724 m L = 15.444 m E = 0.099 m N = 2,563.462 E = 2,988.737	PROP. CURVE LYONS-34 PI STA = 48+674.765 $\Delta = 6^\circ 11' 38''$ (RT) R = 200.000 m T = 10.821 m L = 21.620 m E = 0.293 m N = 2,522.725 E = 2,987.908	PROP. CURVE LYONS-35 PI STA = 48+700.688 $\Delta = 4^\circ 28' 53''$ (LT) R = 200.000 m T = 7.826 m L = 15.643 m E = 0.153 m N = 2,496.994 E = 2,984.584
---	---	--	--	---	--

(A)  
 W11-1  
 750 mm X 750 mm  
  
 (2) 4.25 m  
 TYPE A POSTS  
 SIGNS TO BE PLACED  
 75 m IN ADVANCE OF CROSSING



FOR LEGEND SEE SHEET NO. 37



REVISIONS		
NO.	NAME	DATE

**URS** 1701 GOLF ROAD, SUITE 1000 TEL (847) 228-0707  
 ROLLING MEADOWS, IL 60008 FAX (847) 228-1115  
 FOREST PRESERVE DISTRICT OF COOK COUNTY  
**SALT CREEK GREENWAY TRAIL**  
**PLAN & PROFILE**  
 STA. 48+450 TO STA. 48+740  
 DATE: 7/1/05 DRAWN BY: MIA&VAP  
 DESIGNED BY: MIA CHECKED BY: DDL