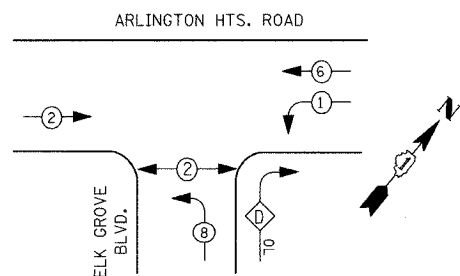


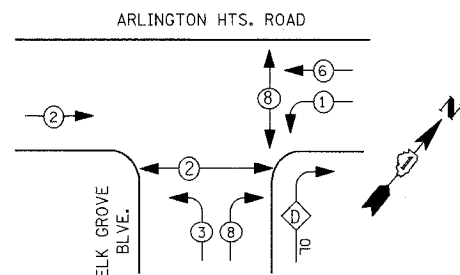
SCHEDULE OF QUANTITIES

DESCRIPTION	UNIT	QUANTITY
MAINTENANCE OF EXISTING TRAFFIC SIGNAL INSTALLATION	EACH	1
ELECTRIC CABLE IN CONDUIT, SIGNAL NO. 14 2/C	METER	59
ELECTRIC CABLE IN CONDUIT, SIGNAL NO. 14 3/C	METER	64
ELECTRIC CABLE IN CONDUIT, SIGNAL NO. 14 7/C	METER	64
SIGNAL HEAD, LED, 1-FACE, 5-SECTION, BRACKET MOUNTED	EACH	2
PEDESTRIAN SIGNAL HEAD, LED, 1-FACE, BRACKET MOUNTED	EACH	2
PEDESTRIAN PUSH BUTTON	EACH	2
MODIFY EXISTING CONTROLLER	EACH	1
REMOVE ELECTRIC CABLE FROM CONDUIT	METER	64
REMOVE EXISTING TRAFFIC SIGNAL EQUIPMENT	EACH	1
REOPTIMIZE TRAFFIC SIGNAL SYSTEM	L SUM	1
SIGNAL HEAD, LED, 1-FACE, 3-SECTION, BRACKET MOUNTED, RETROFIT	EACH	5
SIGNAL HEAD, LED, 1-FACE, 3-SECTION, MAST ARM MOUNTED, RETROFIT	EACH	3
SIGNAL HEAD, LED, 1-FACE, 5-SECTION, BRACKET MOUNTED, RETROFIT	EACH	1
SIGNAL HEAD, LED, 1-FACE, 5-SECTION, MAST ARM MOUNTED, RETROFIT	EACH	2

EXISTING CONTROLLER SEQUENCE



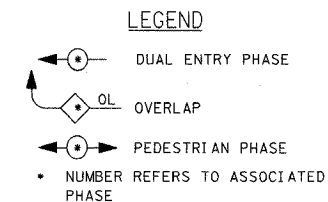
PROPOSED CONTROLLER SEQUENCE



PHASE DESIGNATION DIAGRAM

I.D.O.T TRAFFIC SIGNAL INSTALLATION ELECTRICAL SERVICE REQUIREMENTS					TOTAL WATTAGE
TYPE	NO. LAMPS	WATTAGE INCAND.	LED	OPERATION	
SIGNAL (RED)	12	135	17	0.50	102.00
(YELLOW)	12	135	25	0.25	75.00
(GREEN)	12	135	15	0.25	45.00
ARROW	8	135	12	0.10	9.60
PED. SIGNAL	4	90	25	1.00	100.00
CONTROLLER	1	100	100	1.00	100.00
ILLUM. SIGN	0	84		0.05	

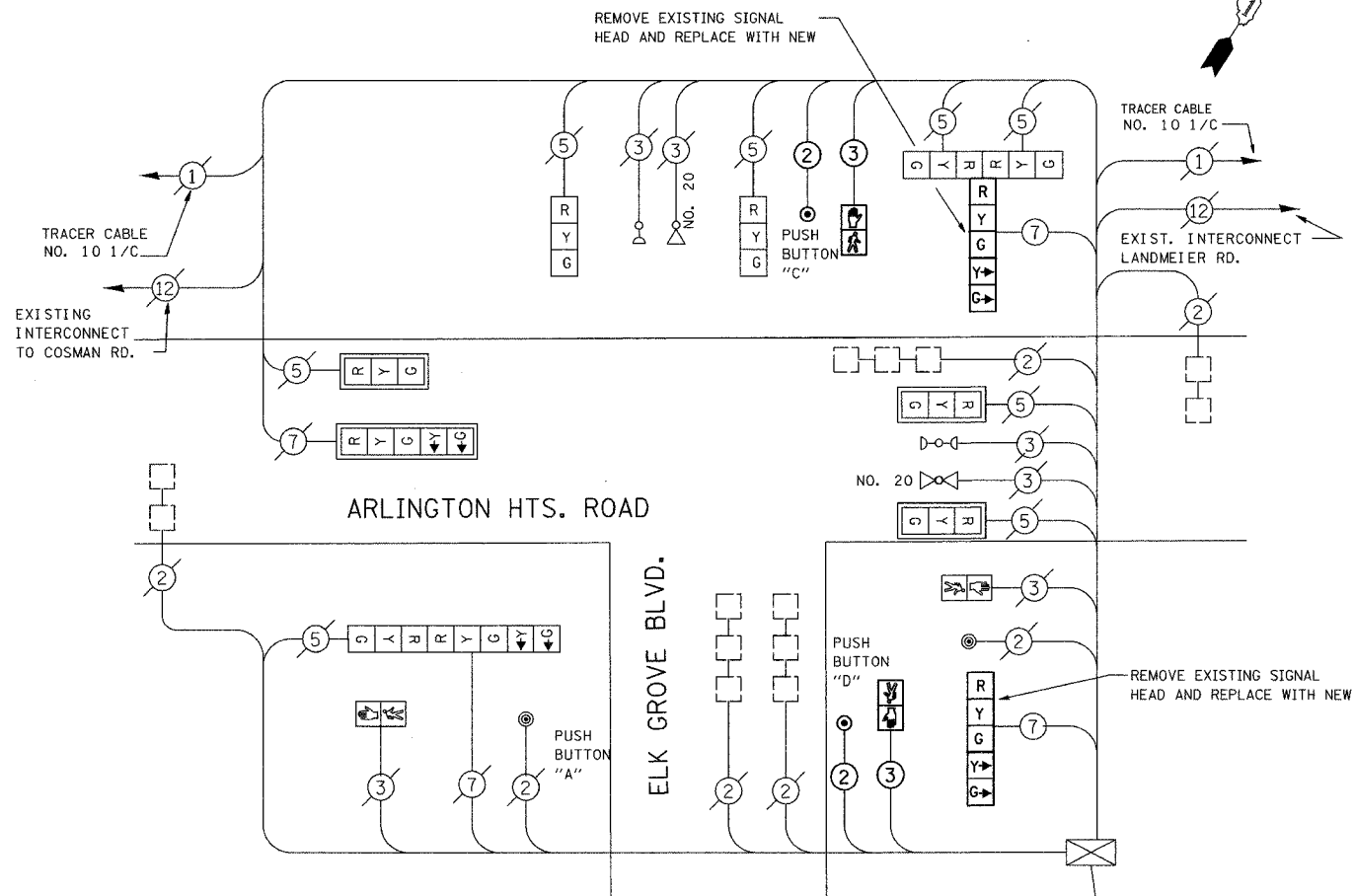
ENERGY COSTS TO: TOTAL = 431.6
 ENERGY SUPPLY: ILLINOIS DEPARTMENT OF TRANSPORTATION, 201 WEST CENTER COURT, SCHAMLUNBURG, ILLINOIS 60196-1096, CONTACT: JERI BLACK, PHONE: (847) 816-5239, COMPANY: COM. EDISON



OVERLAP LETTER	PERMISSIVE PHASE	PROTECTIVE PHASE
D	= 8	+ 1

PROPOSED EMERGENCY VEHICLE PREEMPTORS			
EMERGENCY VEHICLE PREEMPTOR	3	4	5
MOVEMENT	→	↶	↑

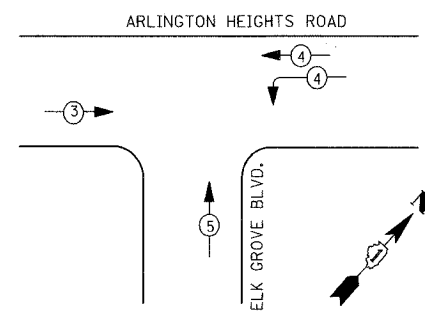
FOUNDATION (DEPTH)	FT. (m)	CABLE SLACK	FT. (m)	VERTICAL	FT. (m)
TYPE A - POST	4 (1.2)	HANDHOLE	6.5 (2.0)	ALL FOUNDATIONS	3.5 (1.0)
D - CONTROLLER	4 (1.2)	DOUBLE HANDHOLE	13 (4.0)	MAST ARM (L) POLE	20'-L-2"=
E - M. ARM POLE	10 (3.0)	SIGNAL POST	2 (1.0)	BRACKET MOUNTED	13 (4.0)
24" (600mm)	10 (3.0)	CONTROLLER CAB.	1 (0.5)	PED. PUSHBUTTON	4 (1.2)
30" (750mm)	15 (4.6)	FIBER OPTIC	13 (4.0)	ELECTRIC SERVICE	13.5 (4.1)
		ELECTRIC SERVICE	1 (0.5)	SERVICE TO GROUND	13.5 (4.1)
		GROUND CABLE	1 (0.5)	POST MOUNTED	6 (1.8)



CABLE PLAN

PUSH BUTTON "D" SHALL PLACE A CALL IN PHASE 6+8

PREEMPTION SEQUENCE EMERGENCY VEHICLE



CABLE PLAN LEGEND

- EXISTING PROPOSED
- ⊗ ⊗ 8" (200mm) TRAFFIC SIGNAL SECTION
 - ⊗ ⊗ 12" (300mm) TRAFFIC SIGNAL SECTION
 - ⊗ ⊗ 12" (300mm) PEDESTRIAN SIGNAL SECTION
 - ⊗ ⊗ 12" (300mm) PEDESTRIAN SIGNAL SECTION
 - ⊗ ⊗ CONTROLLER CABINET
 - ⊗ ⊗ SERVICE INSTALLATION
 - ⊗ ⊗ TELEPHONE CONNECTION
 - ⊗ ⊗ MAGNETIC DETECTOR
 - ⊗ ⊗ EMERGENCY VEHICLE LIGHT DETECTOR
 - ⊗ ⊗ CONFIRMATION BEACON
 - ⊗ ⊗ PUSHBUTTON DETECTOR
 - ⊗ ⊗ VEHICLE DETECTOR, INDUCTION LOOP
 - ⊗ ⊗ DENOTES NUMBER OF CONDUCTORS. ALL CABLE NO. 14 EXCEPT AS INDICATED. ALL LOOP DETECTOR CABLE TO BESHILDED.
 - ⊗ ⊗ SIGNAL FACE WITH BACKPLATE, "P" INDICATES PROGRAMMED HEAD
 - ⊗ ⊗ RAILROAD CONTROL CABINET
 - ⊗ ⊗ ILLUMINATED SIGN, L.E.D. "NO LEFT TURN"
 - ⊗ ⊗ ILLUMINATED SIGN, L.E.D. "NO RIGHT TURN"
 - H/C ⊗ C GROUND ROD AT HANDHOLE (H), DOUBLE HANDHOLE (H), OR CONTROLLER (C).
 - P ⊗ P GROUND ROD AT POST (P), OR MAST ARM POLE (MA).
 - S ⊗ S GROUND ROD AT ELECTRIC SERVICE INSTALLATION
 - ① ① GROUND CABLE IN CONDUIT NO. 6 SOLID COPPER (GREEN)
 - ② ② FIBER OPTIC CABLE IN CONDUIT NO. 62.5/125 MM12F SM12F

SECTION	COUNTY	TOTAL SHEETS	SHEET NO.
05-F3000-01-BT	COOK	92	52
STA. TO STA.			
IDOT PROJECT NO. CMM-8003(498)			
SALT CREEK GREENWAY TRAIL			
CONTRACT NO. 83667			

REVISIONS		
NO.	NAME	DATE

URS 1701 GOLF ROAD, SUITE 1000 TEL (847) 228-0707
 ROLLING MEADOWS, IL 60008 FAX (847) 228-1115

FOREST PRESERVE DISTRICT OF COOK COUNTY
SALT CREEK GREENWAY TRAIL
 SCHEDULE OF QUANTITIES,
 CABLE PLAN AND
 PHASE DESIGNATION DIAGRAM
 OGDEN AVE. & LAWDALE AVE.

DATE: 7/01/05 DRAWN BY: XXX
 DESIGNED BY: MIA CHECKED BY: DDL