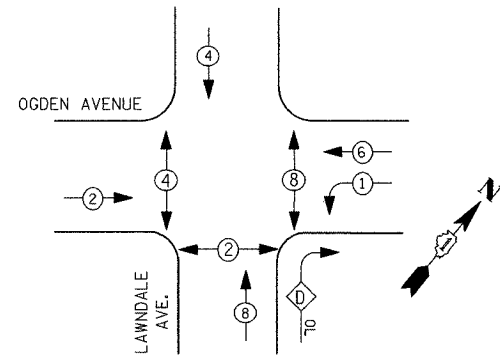


SCHEDULE OF QUANTITIES

DESCRIPTION	UNIT	QUANTITY
MAINTENANCE OF EXISTING TRAFFIC SIGNAL INSTALLATION	EACH	1
ELECTRIC CABLE IN CONDUIT, SIGNAL NO. 14 2/C	METER	32
ELECTRIC CABLE IN CONDUIT, SIGNAL NO. 14 3/C	METER	49
PEDESTRIAN SIGNAL HEAD, LED, 1-FACE, BRACKET MOUNTED	EACH	2
PEDESTRIAN PUSH BUTTON	EACH	1
MODIFY EXISTING CONTROLLER	EACH	1

SECTION	COUNTY	TOTAL SHEETS	SHEET NO.
05-F3000-01-BT	COOK	92	56
STA. TO STA.			
IDOT PROJECT NO. CMM-8003(498)			
SALT CREEK GREENWAY TRAIL			
CONTRACT NO. 83667			

CONTROLLER SEQUENCE



LEGEND

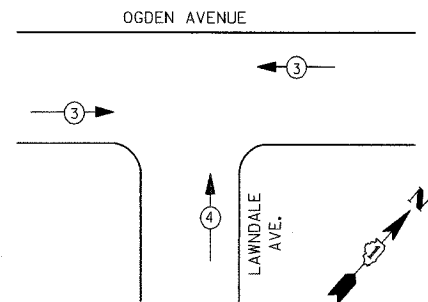
- DUAL ENTRY PHASE
- OVERLAP
- PEDESTRIAN PHASE
- NUMBER REFERS TO ASSOCIATED PHASE

OVERLAP LETTER	PERMISSIVE PHASE	PROTECTIVE PHASE
D	= 8	+ 1

PHASE DESIGNATION DIAGRAM

PROPOSED EMERGENCY VEHICLE PREEMPTORS		
EMERGENCY VEHICLE PREEMPTOR	3	4
MOVEMENT		

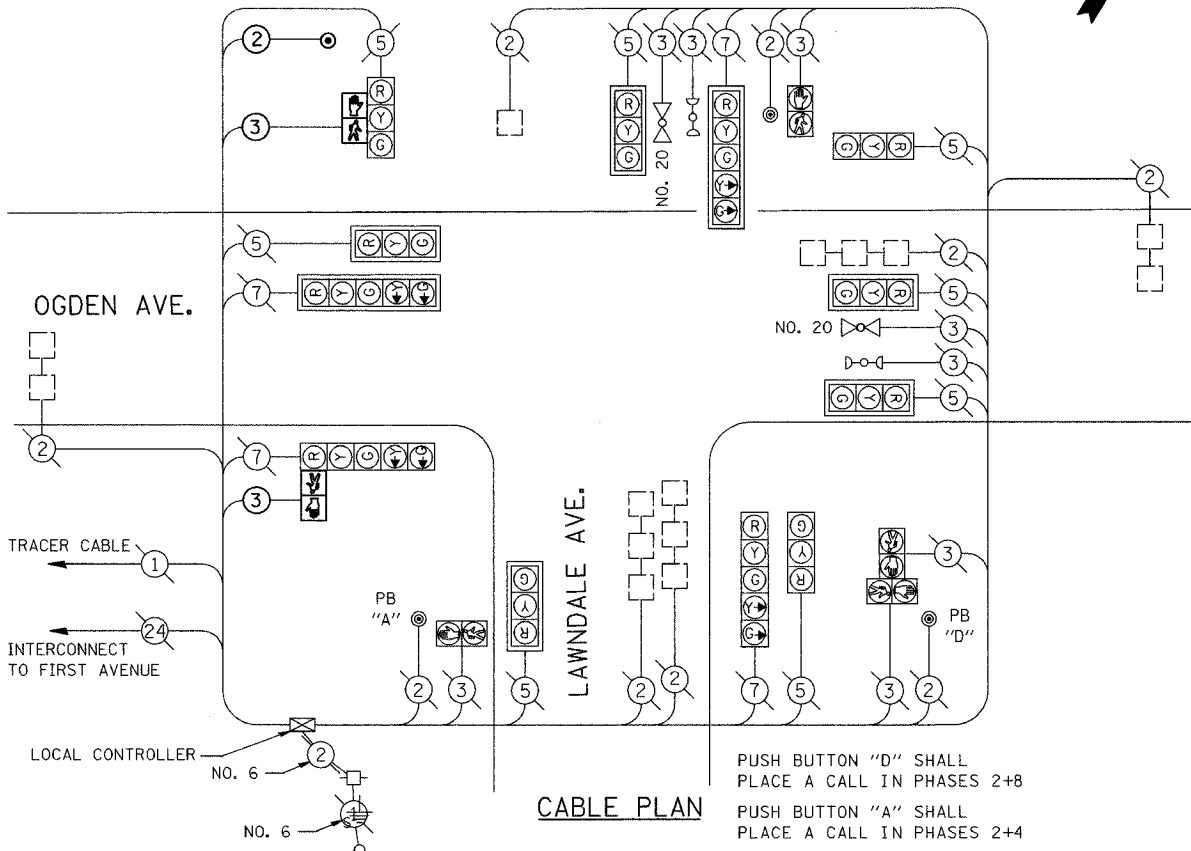
PREEMPTION SEQUENCE EMERGENCY VEHICLE



I.D.O.T. TRAFFIC SIGNAL INSTALLATION ELECTRICAL SERVICE REQUIREMENTS					TOTAL WATTAGE
TYPE	NO. LAMPS	WATTAGE INCAND.	WATTAGE LED	%OPERATION	
SIGNAL (RED)	12	135	17	0.50	810.00
(YELLOW)	12	135	25	0.25	405.00
(GREEN)	12	135	15	0.25	405.00
ARROW	8	135	12	0.10	108.00
PED. SIGNAL	6	90	25	1.00	410.00
CONTROLLER	1	100	100	1.00	100.00
ILLUM. SIGN	0	84		0.05	
FLASHER				0.50	
ENERGY COSTS TO:					TOTAL = 2238.0

ILLINOIS DEPARTMENT OF TRANSPORTATION
 201 WEST CENTER COURT
 SCHAUMBURG, ILLINOIS 60196-1096
 CONTACT: JERI BLACK
 PHONE: (847) 816-5239
 COMPANY: COM. EDISON

FOUNDATION (DEPTH)	FT. (m)	CABLE SLACK	FT. (m)	VERTICAL	FT. (m)
TYPE A - POST	4 (1.2)	HANDHOLE	6.5 (2.0)	ALL FOUNDATIONS	3.5 (1.0)
D - CONTROLLER	4 (1.2)	DOUBLE HANDHOLE	13 (4.0)	MAST ARM (L) POLE	20'±L-2'±
E - M. ARM POLE		SIGNAL POST	2 (1.0)	(6m±L-0.6m)±	
24" (600mm)	10 (3.0)	CONTROLLER CAB.	1 (0.5)	BRACKET MOUNTED	13 (4.0)
30" (750mm)	15 (4.6)	FIBER OPTIC	13 (4.0)	PED. PUSHBUTTON	4 (1.2)
		ELECTRIC SERVICE	1 (0.5)	ELECTRIC SERVICE	13.5 (4.1)
		GROUND CABLE	1 (0.5)	SERVICE TO GROUND	13.5 (4.1)
				POST MOUNTED	6 (1.8)



CABLE PLAN

PUSH BUTTON "D" SHALL PLACE A CALL IN PHASES 2+8
 PUSH BUTTON "A" SHALL PLACE A CALL IN PHASES 2+4

CABLE PLAN LEGEND

- 8" (200mm) TRAFFIC SIGNAL SECTION
- 12" (300mm) TRAFFIC SIGNAL SECTION
- 12" (300mm) PEDESTRIAN SIGNAL SECTION
- 12" (300mm) PEDESTRIAN SIGNAL SECTION
- CONTROLLER CABINET
- SERVICE INSTALLATION
- TELEPHONE CONNECTION
- MAGNETIC DETECTOR
- EMERGENCY VEHICLE LIGHT DETECTOR
- CONFIRMATION BEACON
- PUSHBUTTON DETECTOR
- VEHICLE DETECTOR, INDUCTION LOOP
- DENOTES NUMBER OF CONDUCTORS. ALL CABLE NO. 14 EXCEPT AS INDICATED. ALL LOOP DETECTOR CABLE TO BESHIELDED.
- SIGNAL FACE WITH BACKPLATE, "P" INDICATES PROGRAMMED HEAD
- RAILROAD CONTROL CABINET
- ILLUMINATED SIGN, L.E.D. "NO LEFT TURN"
- ILLUMINATED SIGN, L.E.D. "NO RIGHT TURN"
- GROUND ROD AT HANDHOLE (H), DOUBLE HANDHOLE (H), OR CONTROLLER (C).
- GROUND ROD AT POST (P), OR MAST ARM POLE (MA).
- GROUND ROD AT ELECTRIC SERVICE INSTALLATION
- GROUND CABLE IN CONDUIT NO. 6 SOLID COPPER (GREEN)
- FIBER OPTIC CABLE IN CONDUIT NO. 62.5/125 MM12F SM12F

REVISIONS		
NO.	NAME	DATE

URS 1701 GOLF ROAD, SUITE 1000 TEL (847) 228-0707
 ROLLING MEADOWS, IL 60008 FAX (847) 228-1115

FOREST PRESERVE DISTRICT OF COOK COUNTY
 SALT CREEK GREENWAY TRAIL
 SCHEDULE OF QUANTITIES,
 CABLE PLAN AND
 PHASE DESIGNATION DIAGRAM
 OGDEN AVE. & LAWNDALE AVE.

DATE: 7/01/05 DRAWN BY: XXX
 DESIGNED BY: MIA CHECKED BY: DDL