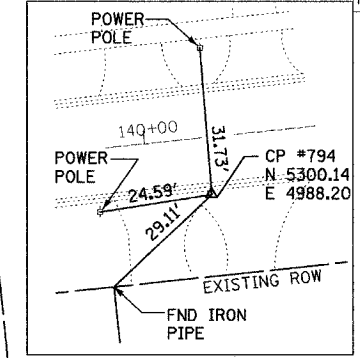


BENCHMARKS:
 BM-200 - SET SQUARE ON NE ABUTMENT/WINGWALL ELEV. 665.04.
 BM-201 - SET "4" ON SE FLANGE BOLT "TAG BOLT" ON FIRE HYDRANT ON EAST SIDE OF MOFFETT ROAD OPPOSITE CENTERLINE SHERIDAN PL. ELEV. 666.52.

F.A.U. RTE.	SECTION	COUNTY	TOTAL SHEETS	SHEET NO.
2758 D2-00025-00-BR	LAKE	LAKE	40	7
STA.	TO STA.			
FED. ROAD DIST. NO.	ILLINOIS	FED. AID PROJECT	CONTRACT NO. 83790	

CP #794

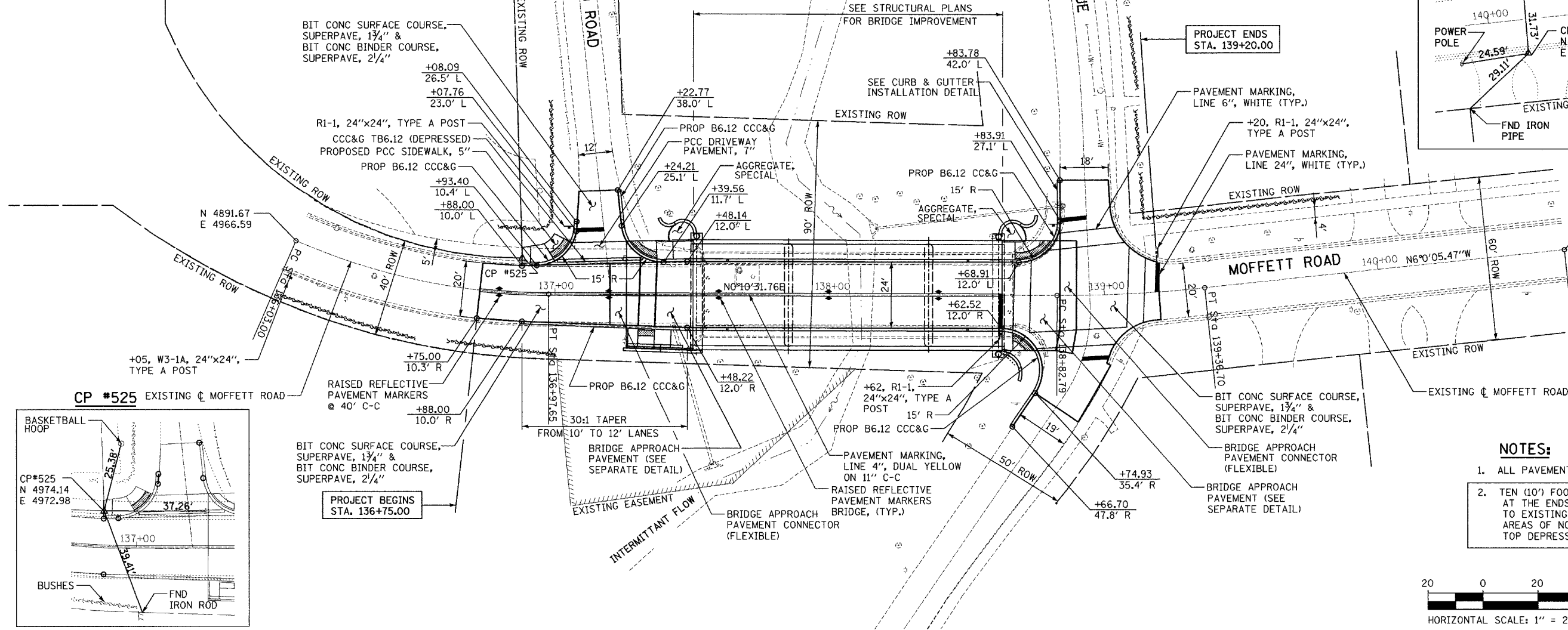
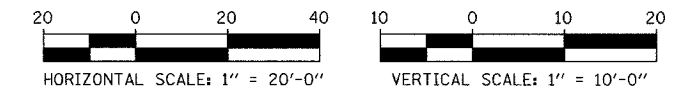


CURVE 1
 P.I. STA= 136+51.01
 (N 4935.61; E 4985.93)
 $\Delta = 23^\circ 34' 44''$
 $D = 24^\circ 54' 40''$
 $R = 230.0'$
 $T = 48.01'$
 $L = 94.65'$
 $E = 4.96'$
 P.C. STA= 136+03.00
 (N 4891.67; E 4966.59)
 P.T. STA= 136+97.65
 (N 4983.61; E 4986.07)

CURVE 2
 P.I. STA= 139+09.77
 (N 5195.73; E 4986.72)
 $\Delta = 6^\circ 10' 37''$
 $D = 11^\circ 27' 33''$
 $R = 500.0'$
 $T = 26.98'$
 $L = 53.90'$
 $E = 0.73'$
 P.C. STA= 138+82.79
 (N 5168.75; E 4986.64)
 P.T. STA= 139+36.70
 (N 5222.56; E 4983.90)

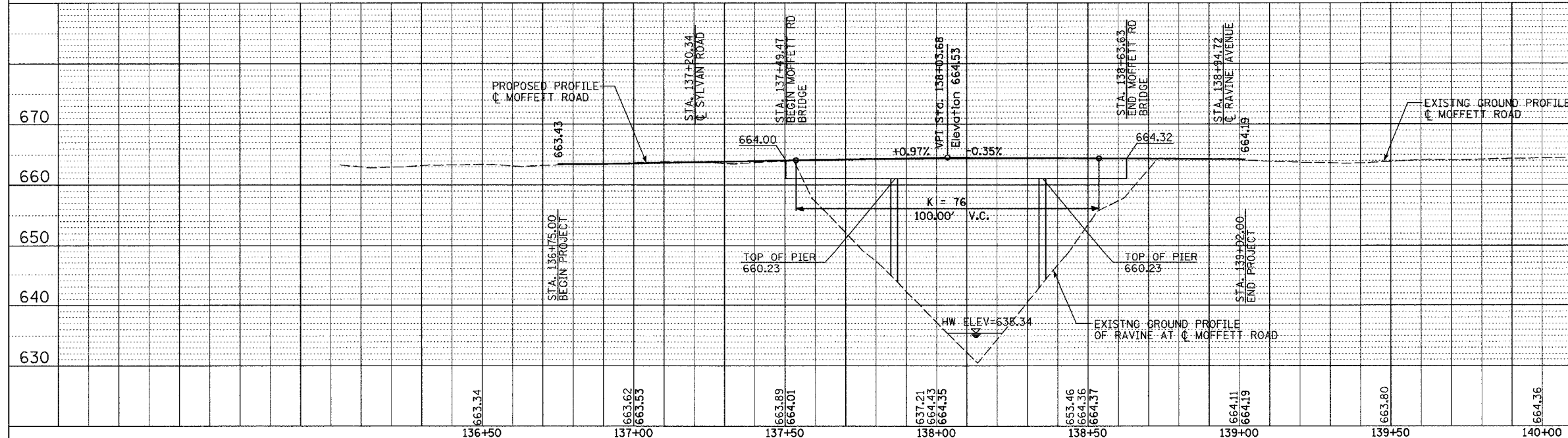
NOTES:

- ALL PAVEMENT MARKING TO BE EPOXY PAINT.
- TEN (10') FOOT TRANSITIONS SHALL BE USED AT THE ENDS OF CURB AND GUTTER SECTIONS TO EXISTING CONDITIONS. TRANSITIONS IN AREAS OF NO CURB AND GUTTER SHALL BE TOP DEPRESSED CURB AND GUTTER SECTION.



PLAN	REVISIONS	DATE
NO.	BY	
	CHECKED	
	DATE	

PROFILE	REVISIONS	DATE
NO.	BY	
	CHECKED	
	DATE	



REVISIONS	
NAME	DATE

ILLINOIS DEPARTMENT OF TRANSPORTATION
MOFFETT ROAD BRIDGE
 OVER DRAINAGE RAVINE
PROPOSED PLAN AND PROFILE

SCALE: HORIZ. 1"=20'-0"
 VERT. 1"=10'-0"
 DATE: 02-02-05
 DRAWN BY: BK
 CHECKED BY: DAJ