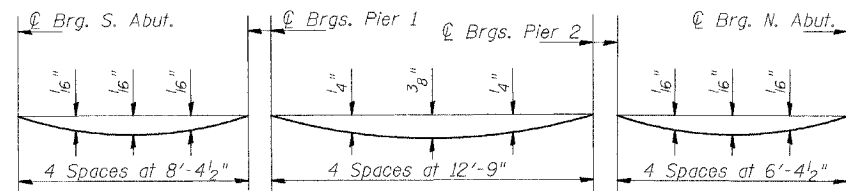
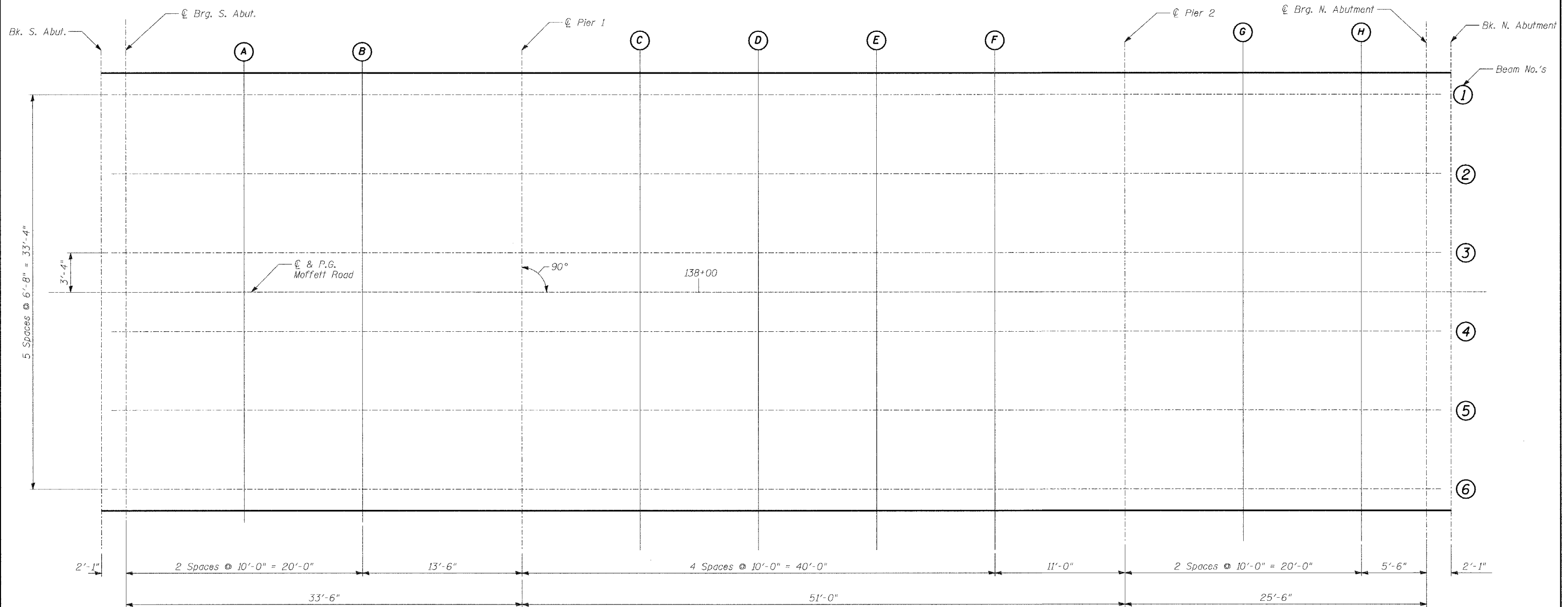


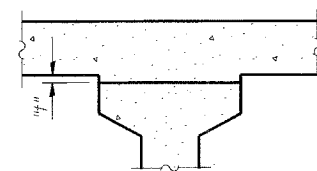
STATE OF ILLINOIS
DEPARTMENT OF TRANSPORTATION

ROUTE NO.	SECTION	COUNTY	TOTAL SHEETS	SHEET NO.	SHEET NO. - 3
2758	*	LAKE	40	13	30 - SHEETS
FED. ROAD DIST. NO.	BILLINGS	FED. AID PROJECT	CONTRACT 83790		
• 02-00025-00-BR					



DEAD LOAD DEFLECTION DIAGRAM

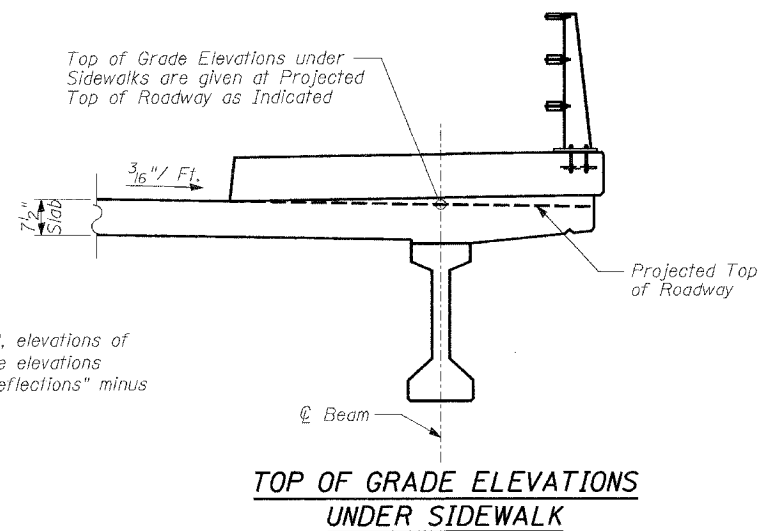
(Includes weight of concrete, excluding beams).
Note: The above deflections are not to be used in the field if the engineer is working from the grade elevations adjusted for dead load deflections as shown below.



FILLET HEIGHTS

To determine "t": After all precast prestressed beams have been erected, elevations of the top flanges of the beams shall be taken at intervals shown below. These elevations subtracted from the "Theoretical Grade Elevations Adjusted for Dead Load Deflections" minus slab thickness, equals the fillet heights "t" above top flanges of beams.

PLAN



TOP OF SLAB ELEVATIONS - LAYOUT

MOFFETT ROAD OVER
DRAINAGE RAVINE
FAU 2758
LAKE COUNTY
S.N. 049-6803

TYLIN INTERNATIONAL

DESIGNED	- DE
CHECKED	- SP
DRAWN	- SP DE
CHECKED	- PF

DATE: 01-28-2005