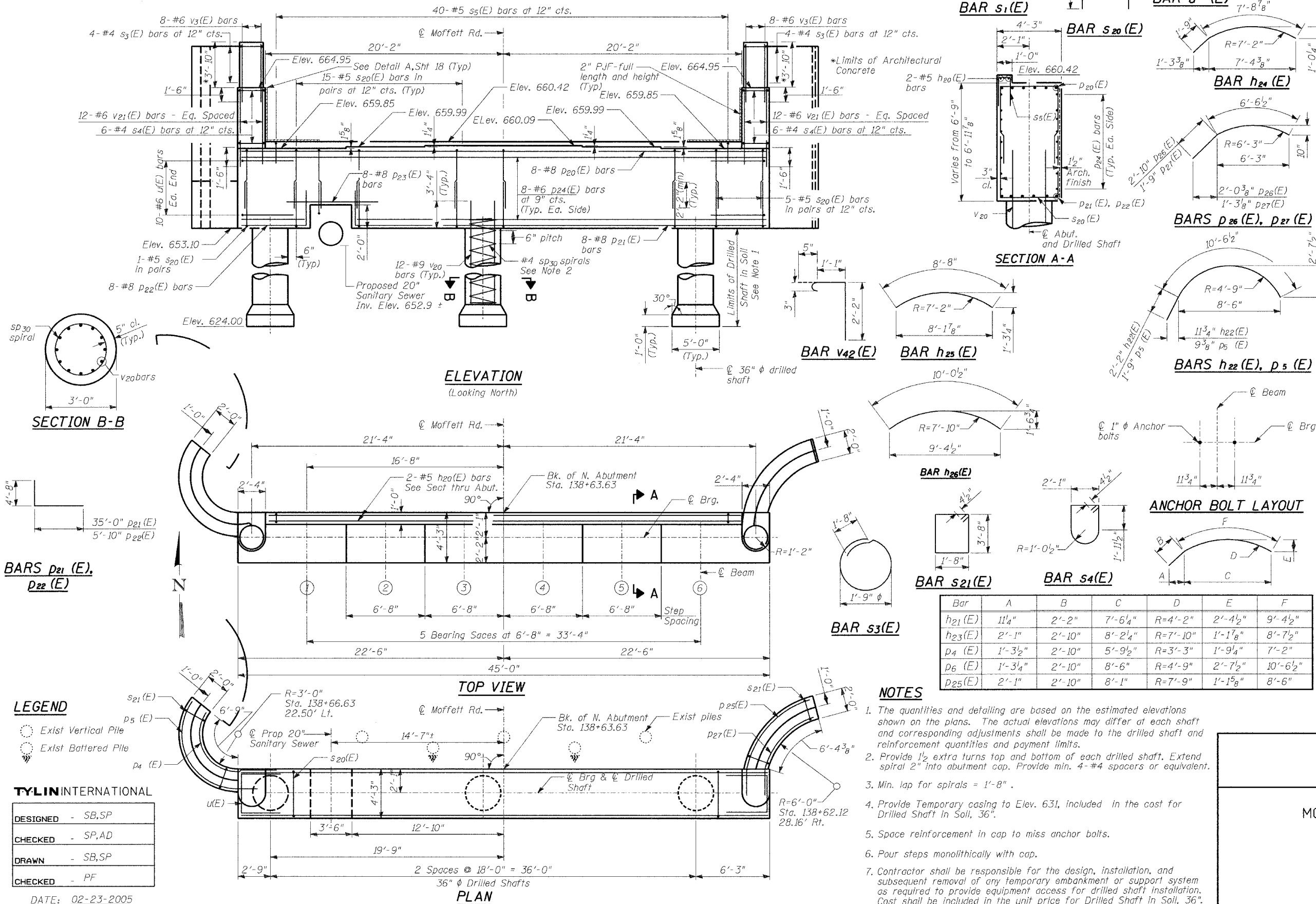


STATE OF ILLINOIS  
DEPARTMENT OF TRANSPORTATION

ROUTE NO.	SECTION	COUNTY	TOTAL SHEETS	SHEET NO.	SHEET NO. - 17
2758		LAKE	40	27	30 - SHEETS
FED. ROAD DIST. NO.	ILLINOIS	FED. AID PROJECT	CONTRACT 83790		
* 02-00025-00-BR					

BILL OF MATERIAL

Bar	No.	Size	Length	Shape
h3 (E)	4	#4	9'-2 1/4"	⌒
h4 (E)	16	#4	3'-6"	⌒
h6 (E)	4	#4	10'-6 1/2"	⌒
h20(E)	2	#5	40'-0"	⌒
h21(E)	11	#7	11'-6 1/2"	⌒
h22(E)	12	#5	12'-10"	⌒
h23(E)	11	#7	11'-5 1/4"	⌒
h24(E)	12	#5	9'-6"	⌒
h25(E)	4	#4	8'-8"	⌒
h26(E)	4	#4	10'-0 1/2"	⌒
p4 (E)	6	#7	10'-0"	⌒
p5 (E)	2	#7	13'-4 1/2"	⌒
p5 (E)	5	#7	12'-3 1/2"	⌒
p20(E)	8	#8	44'-8"	⌒
p21(E)	8	#8	39'-8"	⌒
p22(E)	8	#8	10'-6"	⌒
p23(E)	8	#8	9'-0"	⌒
p24(E)	16	#6	44'-8"	⌒
p25(E)	7	#7	11'-4"	⌒
p26(E)	1	#7	9'-3"	⌒
p27(E)	5	#5	8'-3 1/2"	⌒
s3(E)	8	#4	7'-2"	⊠
s4(E)	12	#4	10'-0 1/4"	⊠
s5(E)	40	#5	4'-0"	⊠
s20(E)	72	#5	12'-9"	⊠
s21(E)	20	#4	11'-5"	⊠
v2(E)	42	#4	4'-4"	⌒
v3(E)	16	#6	5'-2"	⌒
v20(E)	40	#5	8'-11"	⌒
v21(E)	24	#6	6'-5"	⌒
v42(E)	20	#3	3'-8"	⌒
u (E)	20	#6	8'-7 1/2"	⌒
sp30	3	#4	26'-7"	⌒
v20	36	#9	30'-0"	⌒
Concrete Structures, Special		Cu Yd	62.5	
Reinforcement Bars, Epoxy Coated		Pound	7270	
Reinforcement Bars		Pound	4450	
Structure Excavation		Cu Yd	117	
Porous Granular Embankment		Cu Yd	183	
Drilled Shaft in Soil, 36"		Foot	87.3	
Architectural Concrete		Cu Yd	3.3	



NOTES

- The quantities and detailing are based on the estimated elevations shown on the plans. The actual elevations may differ at each shaft and corresponding adjustments shall be made to the drilled shaft and reinforcement quantities and payment limits.
- Provide 1/2 extra turns top and bottom of each drilled shaft. Extend spiral 2" into abutment cap. Provide min. 4-#4 spacers or equivalent.
- Min. lap for spirals = 1'-8".
- Provide Temporary casing to Elev. 631, included in the cost for Drilled Shaft in Soil, 36".
- Space reinforcement in cap to miss anchor bolts.
- Pour steps monolithically with cap.
- Contractor shall be responsible for the design, installation, and subsequent removal of any temporary embankment or support system as required to provide equipment access for drilled shaft installation. Cost shall be included in the unit price for Drilled Shaft in Soil, 36".

NORTH ABUTMENT

MOFFETT ROAD OVER  
DRAINAGE RAVINE  
FAU 2758  
LAKE COUNTY  
S.N. 049-6803

**LEGEND**

- Exist Vertical Pile
- Exist Battered Pile

**TYLIN INTERNATIONAL**

DESIGNED	- SB,SP
CHECKED	- SP,AD
DRAWN	- SB,SP
CHECKED	- PF

DATE: 02-23-2005