

STATE OF ILLINOIS
DEPARTMENT OF TRANSPORTATION

| | | | | | |
|---------------------|----------|-------------------|----------------|-----------|----------------|
| ROUTE NO. | SECTION | COUNTY | TOTAL SHEETS | SHEET NO. | SHEET NO. - 27 |
| 2758 | * | LAKE | 40 | 37 | 30 SHEETS |
| FED. ROAD DIST. NO. | ILLINOIS | FED. AID PROJECT- | CONTRACT 83790 | | |

02-00025-00-BR

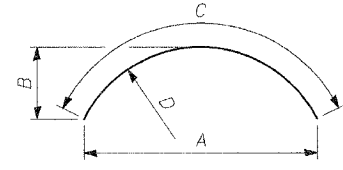
BILL OF MATERIAL

| Bar | No. | Size | Length | Shape |
|----------------------------------|-----|--------|--------|-------|
| h ₄₀ (E) | 17 | #5 | 13'-2" | — |
| n ₄₁ (E) | 8 | #5 | 6'-0" | — |
| h ₄₂ (E) | 7 | #5 | 7'-4" | — |
| n ₄₃ (E) | 4 | #4 | 6'-0" | — |
| h ₄₄ (E) | 4 | #4 | 7'-4" | — |
| | | | | |
| n ₄₀ (E) | 44 | #5 | 4'-4" | — |
| | | | | |
| t ₄₀ (E) | 28 | #5 | 4'-8" | — |
| t ₄₁ (E) | 24 | #5 | 5'-0" | — |
| | | | | |
| v ₂ (E) | 16 | #4 | 4'-4" | — |
| v ₄₀ (E) | 28 | #5 | 7'-2" | — |
| v ₄₁ (E) | 16 | #5 | 6'-1" | — |
| v ₄₂ (E) | 21 | #3 | 3'-8" | — |
| | | | | |
| w ₄₀ (E) | 10 | #5 | 13'-2" | — |
| w ₄₁ (E) | 4 | #5 | 10'-9" | — |
| w ₄₂ (E) | 4 | #5 | 8'-2" | — |
| w ₄₃ (E) | 2 | #5 | 11'-2" | — |
| | | | | |
| Concrete Structures, Special | | Cu Yd | 11.1 | |
| Architectural Concrete | | Cu Yd | 0.8 | |
| Reinforcement Bars, Epoxy Coated | | Pounds | 1460 | |
| Structure Excavation | | Cu Yd | 66 | |
| Porous Granular Embankment | | Cu Yd | 44 | |

Reinforcement bars designated (E) shall be epoxy coated.

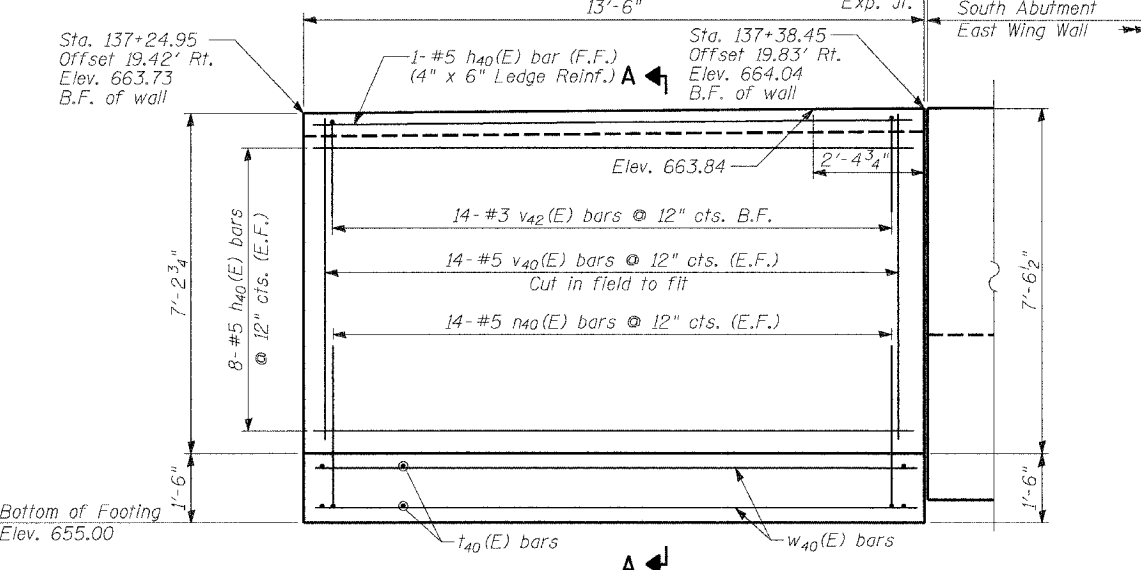
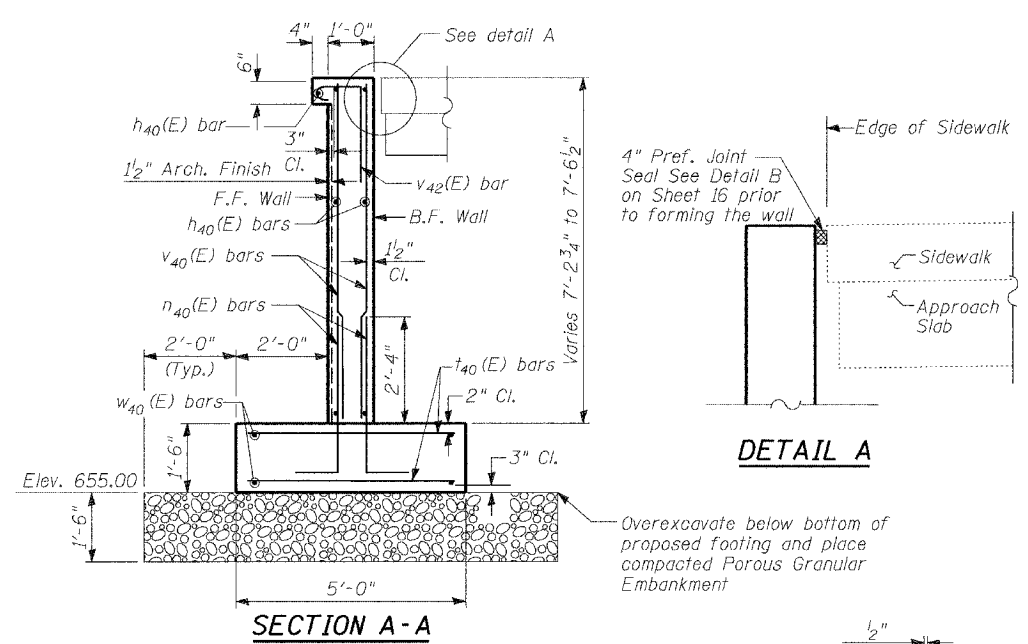
CURVED BAR TABLE

| Bar | A | B | C | D |
|---------------------|------------------------------------|------------------------------------|--------|----------|
| h ₄₁ (E) | 5'-1 ⁵ / ₈ " | 1'-4 ¹ / ₄ " | 6'-0" | R=3'-2" |
| h ₄₂ (E) | 6'-3 ¹ / ₈ " | 1'-8" | 7'-4" | R=3'-10" |
| h ₄₃ (E) | 5'-1 ⁵ / ₈ " | 1'-4 ¹ / ₄ " | 6'-0" | R=3'-2" |
| h ₄₄ (E) | 6'-3 ¹ / ₈ " | 1'-8" | 7'-4" | R=3'-10" |
| w ₄₃ (E) | 9'-6" | 2'-7 ¹ / ₈ " | 11'-2" | R=5'-9" |

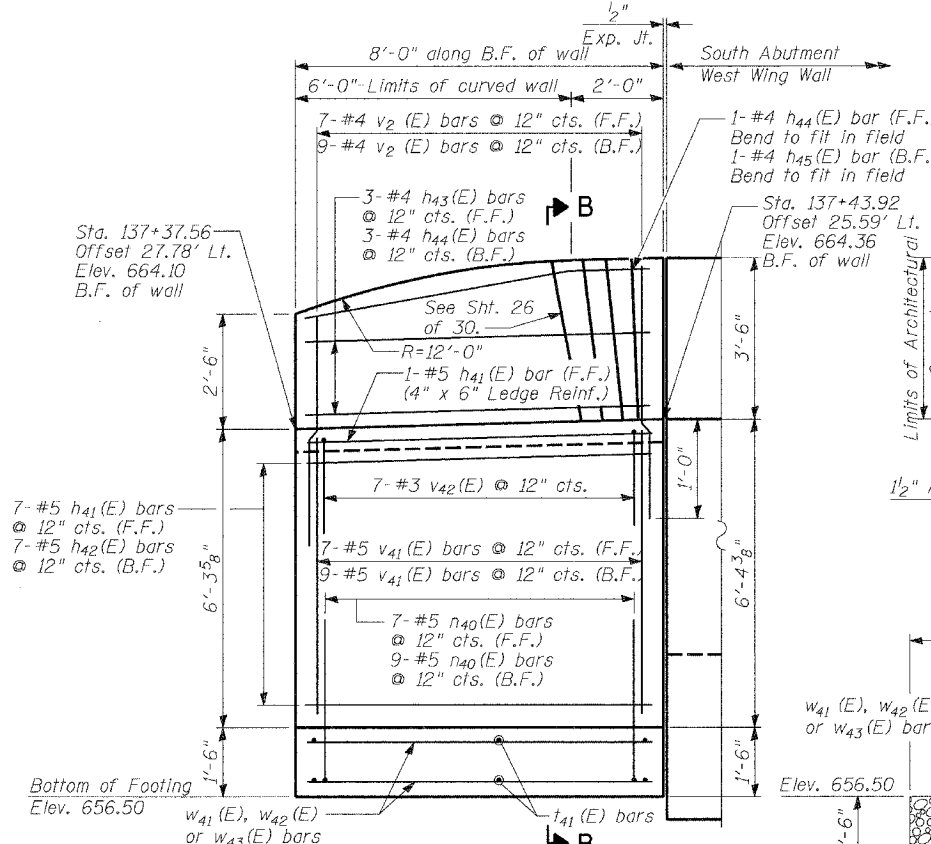


BAR n₄₀(E)

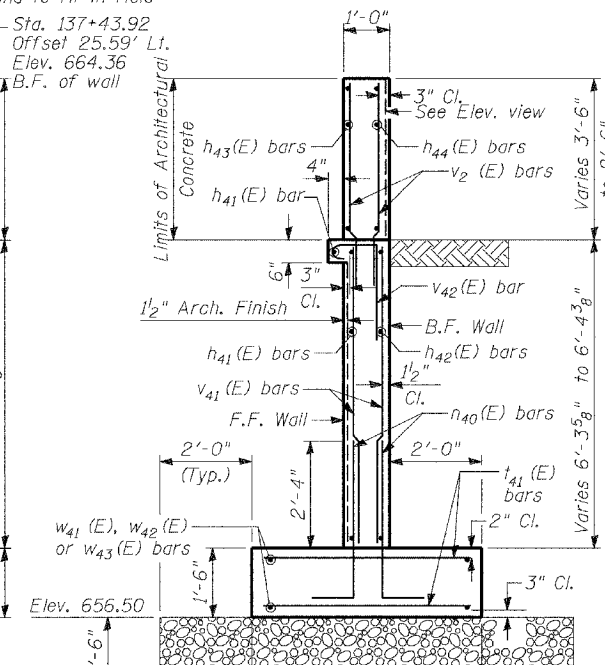
BAR v₄₂(E)



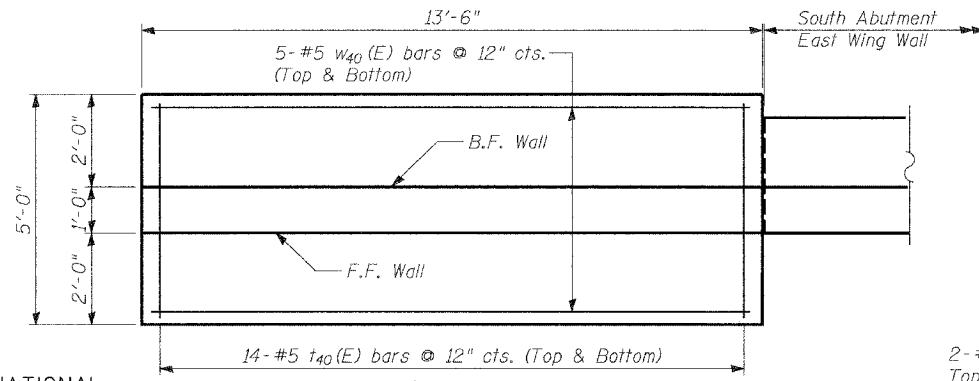
ELEVATION OF SOUTHEAST WALL
(Looking West)



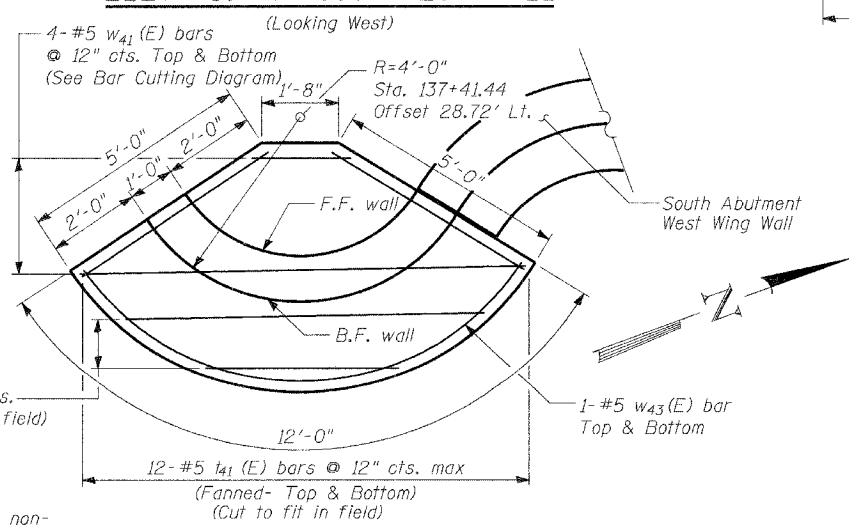
ELEVATION OF SOUTHWEST WALL
(Looking West)



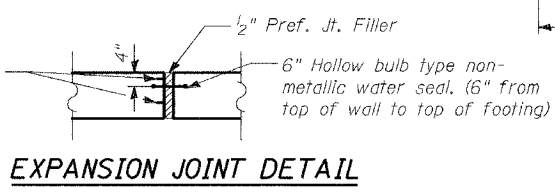
BAR CUTTING DIAGRAM



PLAN OF SOUTHEAST WALL



PLAN OF SOUTHWEST WALL



EXPANSION JOINT DETAIL

NOTES:

- Stations and offsets for the Southeast and Southwest Walls are taken at the Back Face of wall.
- For Architectural Finish, See Sheet 26 of 30.

SOUTH ABUTMENT RETAINING WALLS

MOFFETT ROAD OVER
DRAINAGE RAVINE
FAU 2758
LAKE COUNTY
S.N. 049-6803

TYLIN INTERNATIONAL

| | |
|----------|------|
| DESIGNED | - SP |
| CHECKED | - AD |
| DRAWN | - DE |
| CHECKED | - PF |

DATE: 02-23-2005