

**SMITH ENGINEERING CONSULTANTS, INC.**  
 CIVIL/STRUCTURAL ENGINEERS AND SURVEYORS  
 4500 POND PARKWAY, SUITE 301  
 McHENRY, ILLINOIS 60050  
 PH: 815-385-1770 FAX: 815-385-1781  
 www.smithengineering.com E-MAIL: sec@smithengineering.com  
 McHENRY HUNTLEY YORKVILLE  
 ILLINOIS PROFESSIONAL DESIGN FIRM # 184-000108

STATE OF ILLINOIS  
 DEPARTMENT OF TRANSPORTATION  
 DIVISION OF HIGHWAYS

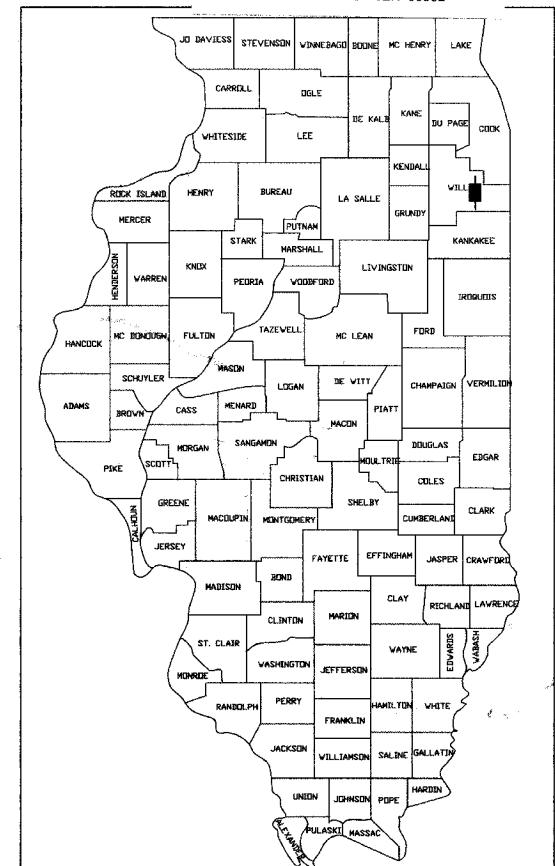
**PLANS FOR PROPOSED  
 FEDERAL AID HIGHWAY**

CH. 70 HARLEM AVENUE/DRECKSLER ROAD  
 OVER BLACK WALNUT CREEK  
 SECTION NO. 01-00139-02-BR  
 BRIDGE SUPERSTRUCTURE REPLACEMENT  
 PROJECT NO. BROS D001 607  
 STRUCTURE NUMBER 099-3091

WILL COUNTY  
 C-91-148-01  
 R 12 E, R 13 E

F.A.U. RTE.	SECTION	COUNTY	TOTAL SHEETS	SHEET NO.
3762	01-00139-02-BR	WILL	35	1
PROJECT NO. BROS D001 607				
FED. ROAD DIST. NO. 1 ILLINOIS HIGHWAY PROJECT 1				

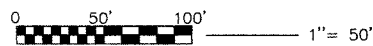
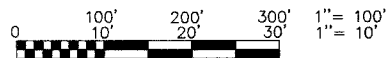
CONTRACT NUMBER 83802



LOCATION OF SECTION INDICATED THIS: -

FOR INDEX OF SHEETS, SEE SHEET NO. 2

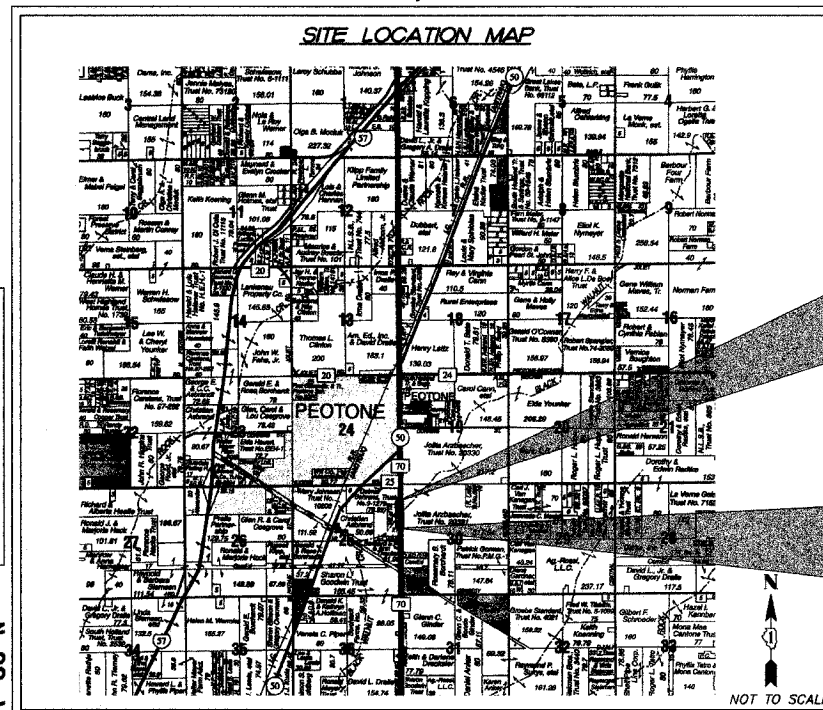
SCALES  
 PLAN: 1" = 20'  
 PROFILE HORIZ.: 1" = 20'  
 PROFILE VERT.: 1" = 5'  
 CROSS SECTIONS HORIZ.: 1" = 2'  
 CROSS SECTIONS VERT.: 1" = 5'



FULL SIZE PLANS HAVE BEEN PREPARED USING STANDARD ENGINEERING SCALES, REDUCED SIZED PLANS WILL NOT CONFORM TO STANDARD SCALES, IN MAKING MEASUREMENTS ON REDUCED PLANS, THE ABOVE SCALES MAY BE USED.

PROJECT LOCATED IN  
 UNINCORPORATED WILL COUNTY

**STRUCTURE INFORMATION**  
 EXISTING AND PROPOSED STRUCTURE IS SINGLE SPAN (48'-8 1/2") REMOVE EXISTING PPC DECK BEAM SUPERSTRUCTURE AND REPLACE WITH A 43'-2" WIDE SUPERSTRUCTURE CONSISTING OF A CONCRETE DECK ON STEEL WIDE FLANGE BEAMS. EXISTING SUBSTRUCTURE UNITS TO BE MODIFIED AND RE-USED. SN 099-3091



HARLEM AVENUE  
 PROJECT ENDS  
 STA. 113+46.50

HARLEM AVENUE  
 PROJECT BEGINS  
 STA. 100+00

WILL/PEOTONE TOWNSHIP (RANGE LINE)

GROSS LENGTH OF PROJECT = 1,347 FEET = 0.255 MILES  
 NET LENGTH OF PROJECT = 1,347 FEET = 0.255 MILES

FUNCTIONAL CLASSIFICATION  
 LOCAL ROAD, (NON-URBAN)

DESIGN SPEED  
 HARLEM AVENUE: 55 MPH

SPEED LIMIT  
 HARLEM AVENUE: 55 MPH

TRAFFIC DATA  
 HARLEM AVENUE: 1,207 (2002)  
 13,500 (2025)

STATE OF ILLINOIS  
 DEPARTMENT OF TRANSPORTATION  
 DIVISION OF HIGHWAYS

APPROVED MAY 20 2005  
Sheldon C. Lot  
 LOCAL AGENCY OFFICIAL

APPROVED MAY 20 2005  
[Signature]  
 LOCAL ROAD ENGINEER

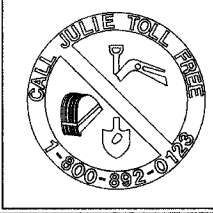
APPROVED June 1, 2005  
Dina O'Keefe/AP  
 DEPUTY DIRECTOR OF HIGHWAYS  
 REGION ONE ENGINEER

PRINTED BY AUTHORITY OF THE  
 STATE OF ILLINOIS

CALL JULIE 1-800-892-0123

WITH THE FOLLOWING:  
 COUNTY WILL  
 CITY-TOWNSHIP WILL / PEOTONE  
 SEC. & 1/4 SEC. NO.# 25, NE 1/4

48 hours before you dig  
 (Excluding Sat., Sun. & Holidays)



CONTRACT NO. 83802

PROFESSIONAL ENGINEER'S SIGN & SEAL

Jeff L. Pisha  
 JEFF L. PISHA P.E.  
 5-23-2005

DATE: 11-30-2005  
 LICENSE EXPIRES: \_\_\_\_\_

SEAL

FEDERAL AID DESIGN ENGINEER: JESSICA MILLER (847) 705-4487

PLOT FILE GEN  
 DATE: 05-19-05  
 04:15:59 - 011.dwg