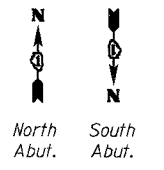


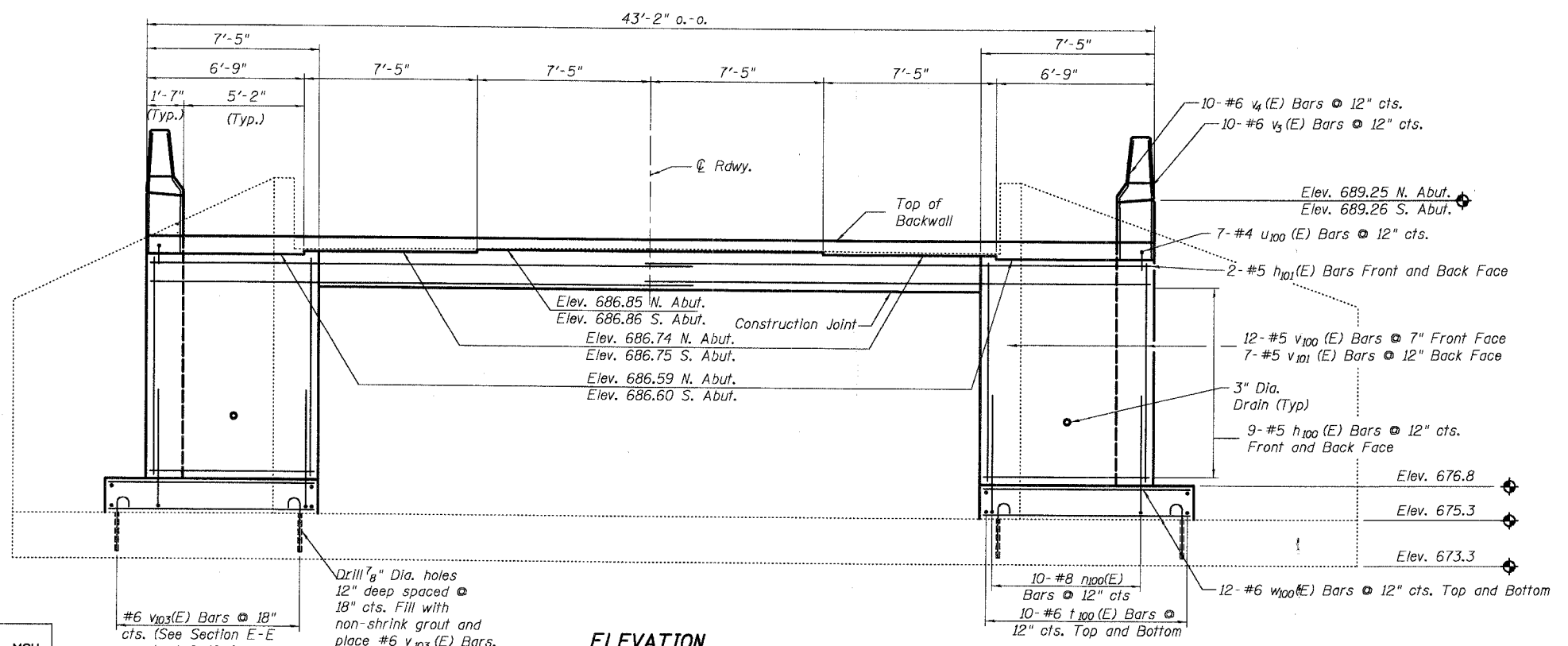
**PLAN**  
Not to Scale



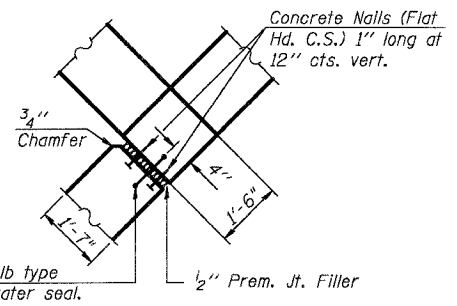
- NOTES:**
1. Removal of Existing Concrete shall conform to Article 501.03 of the Standard Specifications.
  2. Preserve and incorporate 3" length of a minimum of 50% of existing vertical reinforcement in removal area.
  3. Preserve and incorporate existing u Bar's located in the Back Wall.
  4. Install Epoxy Crack Sealing into narrow cracks located on the inside face of existing abutment walls as directed by the Resident Engineer..
  5. Install Formed Concrete Repair (Depth less than 5") on the inside face of the existing abutment walls as directed by the Resident Engineer.
  6. Work this sheet with S-12.

**WORK POINT TABLE**

Work Point	Harlem Ave Station	Offset
1	106+76.00	0' R
2	107+24.70	0' R



**ELEVATION**  
Not to Scale



**CORNER DETAIL**

DESIGNED	MGH
CHECKED	RGD
DRAWN	WJH
CHECKED	NRF

SMITH ENGINEERING CONSULTANTS, INC.	
ILLINOIS PROFESSIONAL ENGINEERS AND SURVEYORS	
REVISIONS	
NAME	DATE

ILLINOIS DEPARTMENT OF TRANSPORTATION

Abutment Plan and Elevation  
Harlem Avenue/Drecksler Road  
Over Black Walnut Creek  
Will County  
Section 01-00139-02-BR  
SN. 099-3091

DATE 5-26-2005