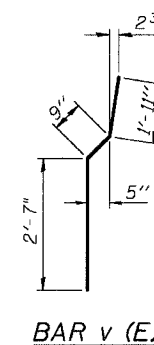
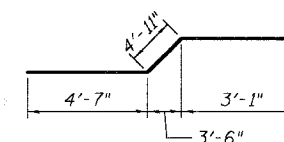
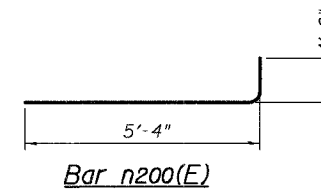
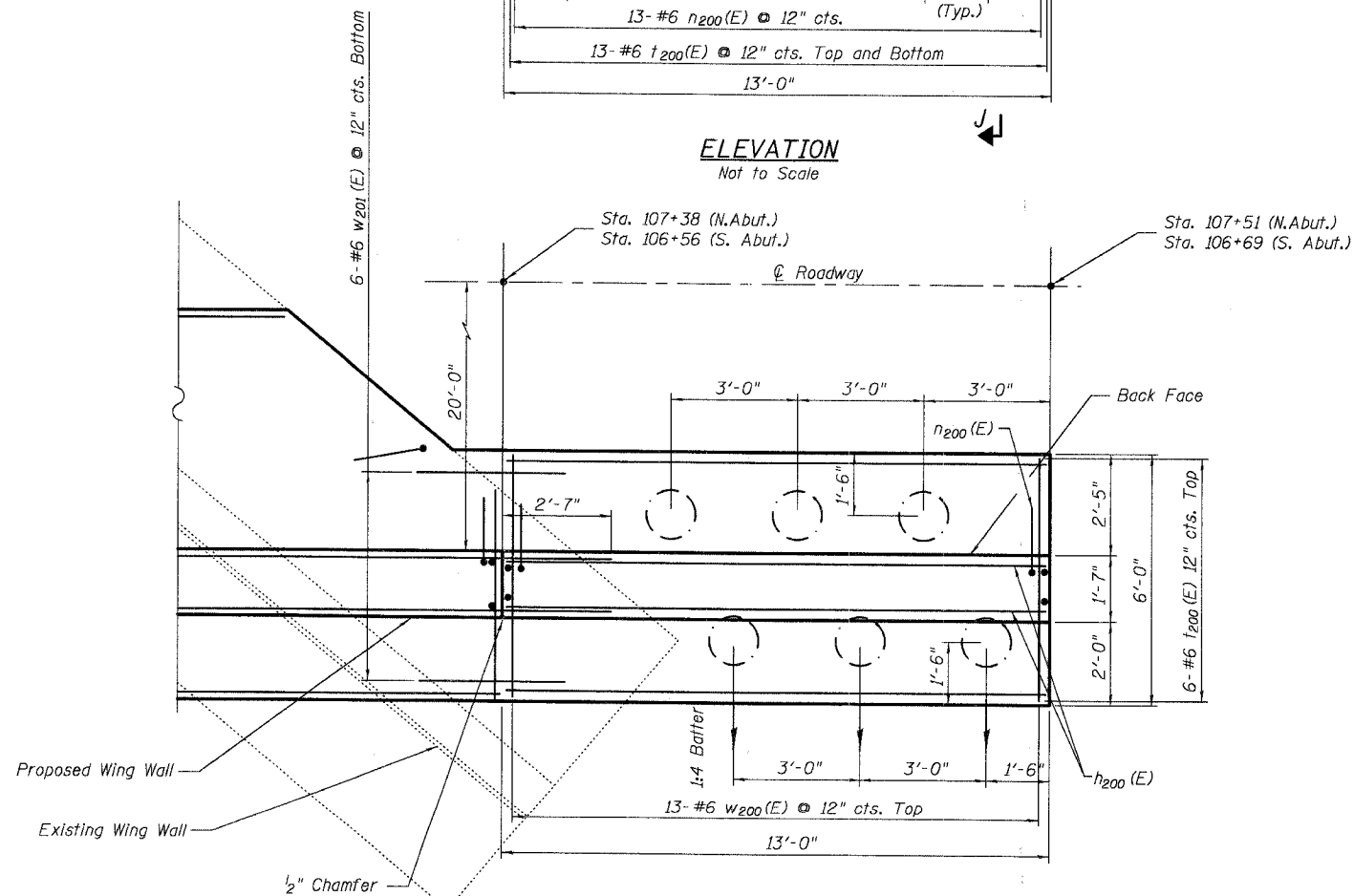
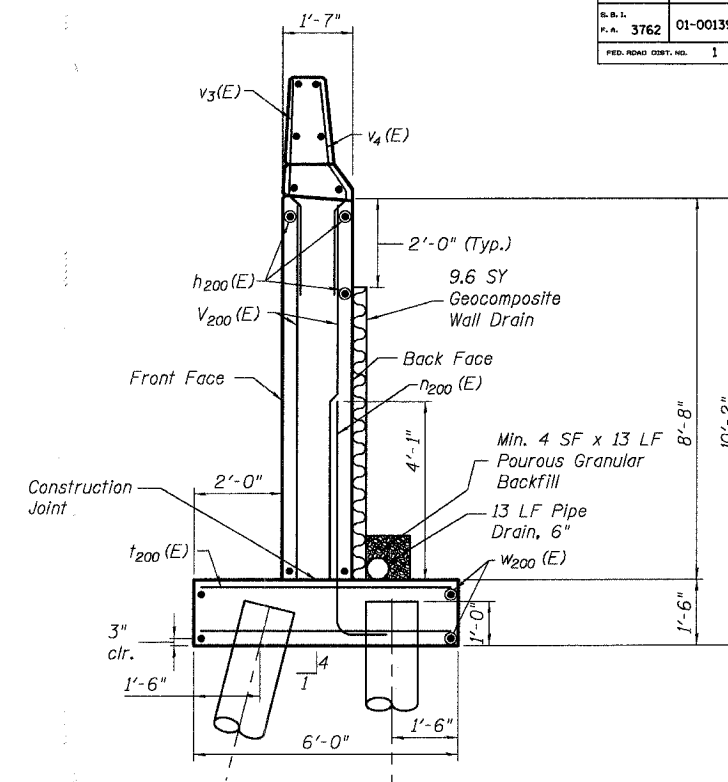
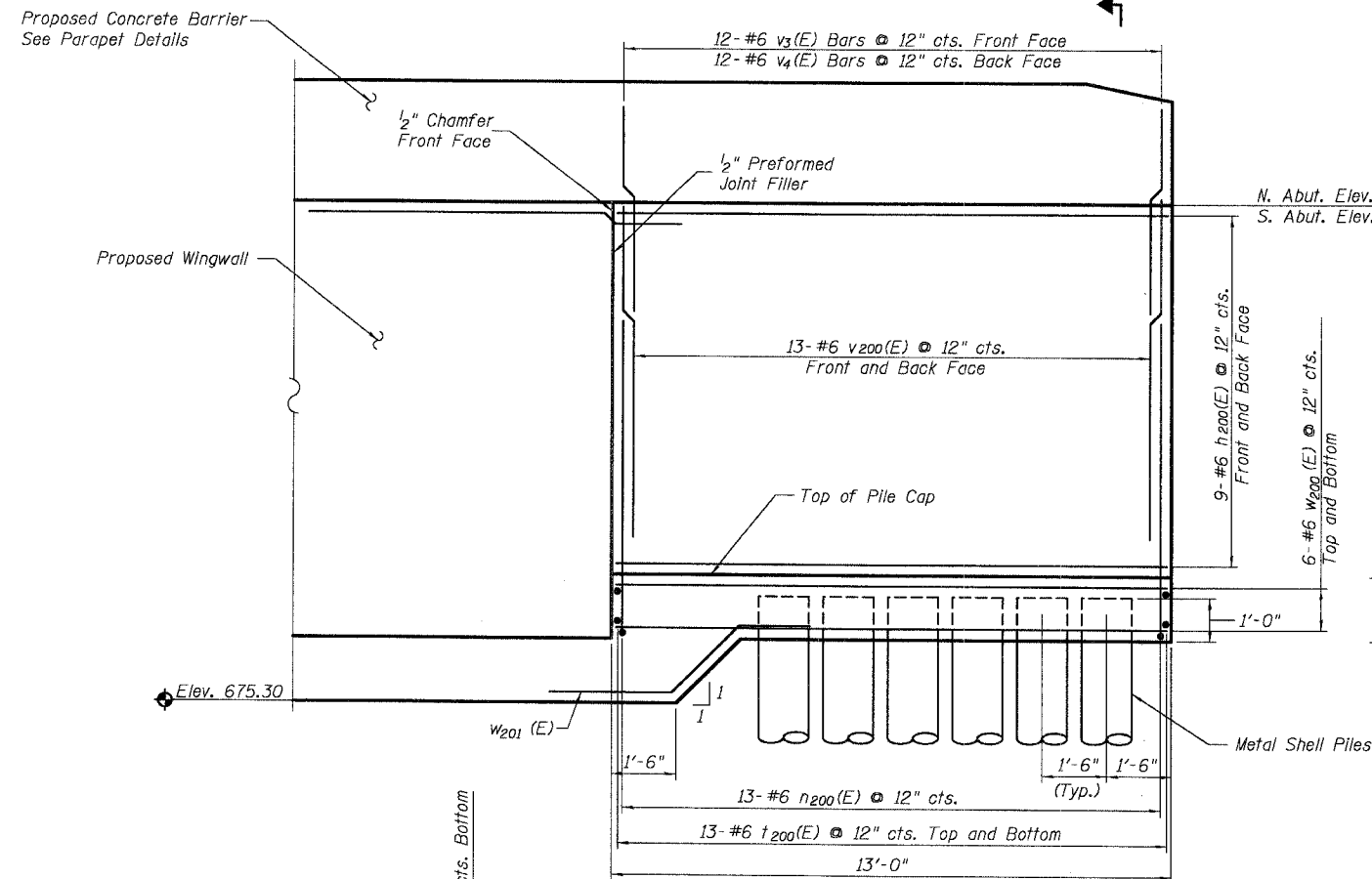


ROUTE NO.	SECTION	COUNTY	TOTAL SHEETS	SHEET NO.
S.B.L. F.A. 3762	01-00139-02-BR	Will	35	25
FED. ROAD DIST. NO. 1	ILLINOIS	FED. AID PROJECT	CONTRACT # 83802	

SHEET NO. S-11
S-13 SHEETS



PILE DATA

Type: 14" φ Metal Shells
Capacity: 15 Ton
Length: 34 Ft
No.: 12*
* included one (1) Test Pile at Northeast Retaining Wall

BILL OF MATERIAL

Bar	No.	Size	Length (FT)	Shape
h ₂₀₀ (E)	36	# 6	11'-8"	
n ₂₀₀ (E)	26	# 6	6'-4"	
t ₂₀₀ (E)	52	# 6	5'-8"	
v ₂₀₀ (E)	52	# 6	8'-6"	
v ₃ (E)	23	# 6	4'-5"	
v ₄ (E)	23	# 6	5'-3"	
w ₂₀₀ (E)	24	# 6	11'-8"	
w ₂₀₁ (E)	12	# 6	12'-7"	
Reinforcement Bars, Epoxy Coated		Pound	2,970	
Concrete Structures		Cu. Yd.	26.9	
Structure Excavation		Cu. Yd.	83.6	
Porous Granular Backfill		Cu. Yd.	46.7	
Geocomposite Wall Drain		Sq. Yd.	19.3	
Pipe Drain		Foot	26	

Reinforcement Bars designated (E) shall be Epoxy Coated

DESIGNED	MGH
CHECKED	RGD
DRAWN	WJH
CHECKED	NRF

Not to Scale
Northeast Wall shown
(Southeast Wall ~ opposite hand)

SMITH ENGINEERING CONSULTANTS, INC.
CIVIL/STRUCTURAL ENGINEERS
LTD. SURVEYORS

REVISIONS	
NAME	DATE

ILLINOIS DEPARTMENT OF TRANSPORTATION

Retaining Wall Plan and Elevation
Harlem Avenue/Drecksler Road
Over Black Walnut Creek
Will County
Section 01-00139-02-BR
SN. 099-3091

DATE 5-26-2005