

INDEX OF SHEETS

COVER SHEET 1
 GENERAL NOTES AND LIST OF STANDARDS 2
 SUMMARY OF QUANTITIES 3
 TYPICAL SECTIONS 4
 ALIGNMENT AND TIES 5
 PLAN AND PROFILE SHEETS 6-8
 CONSTRUCTION STAGING /DETOUR PLAN 9
 EROSION AND SEDIMENT CONTROL DETAILS 10
 DRAINAGE AND UTILITY SHEETS 11-14
 DRAINAGE SCHEDULE AND DETAILS 15
 INTERSECTION DETAILS 16
 PAVEMENT MARKING DETAILS 17
 LANDSCAPING DETAILS 18
 TRAFFIC SIGNAL DETAILS 19-21
 DISTRICT 1 DETAILS 22-39
 CROSS SECTIONS - PFEIFFER ROAD 40-54
 CROSS SECTIONS - US ROUTE 30 55-61-A

PROJECT LOCATED IN THE VILLAGE OF FRANKFORT

DESCRIPTION OF PROJECT

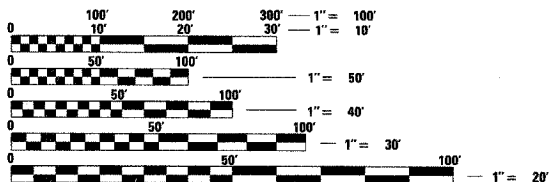
THIS IMPROVEMENT CONSISTS OF EARTH EXCAVATION, CONSTRUCTION OF STORM SEWER AND DRAINAGE STRUCTURES, ROADWAY RECONSTRUCTION, INSTALLATION OF TRAFFIC SIGNALS, LANDSCAPING AND COLLATERAL WORK NECESSARY TO COMPLETE THE IMPROVEMENT SHOWN HEREIN AND AS DESCRIBED IN THE SPECIFICATION.

DESIGN DESIGNATION

PFEIFFER ROAD
 COLLECTOR STREET
 U.S. ROUTE 30
 MAJOR ARTERIAL

TRAFFIC DATA

PFEIFFER ROAD
 POSTED SPEED = 35 MPH
 DESIGN SPEED = 40 MPH
 ADT = 5,600 (2005), 12000 (2020)
 U.S. ROUTE 30
 POSTED SPEED = 45 MPH
 DESIGN SPEED = 50 MPH
 ADT = EAST LEG 20,100 (2005/2020)
 WEST LEG 19,300 (2005), 20,000 (2020)



FULL SIZE PLANS HAVE BEEN PREPARED USING STANDARD ENGINEERING SCALES. REDUCED SIZED PLANS WILL NOT CONFORM TO STANDARD SCALES. IN MAKING MEASUREMENTS ON REDUCED PLANS, THE ABOVE SCALES MAY BE USED.

J.U.L.I.E.
 JOINT UTILITY LOCATION INFORMATION FOR EXCAVATION
 1-800-892-0123

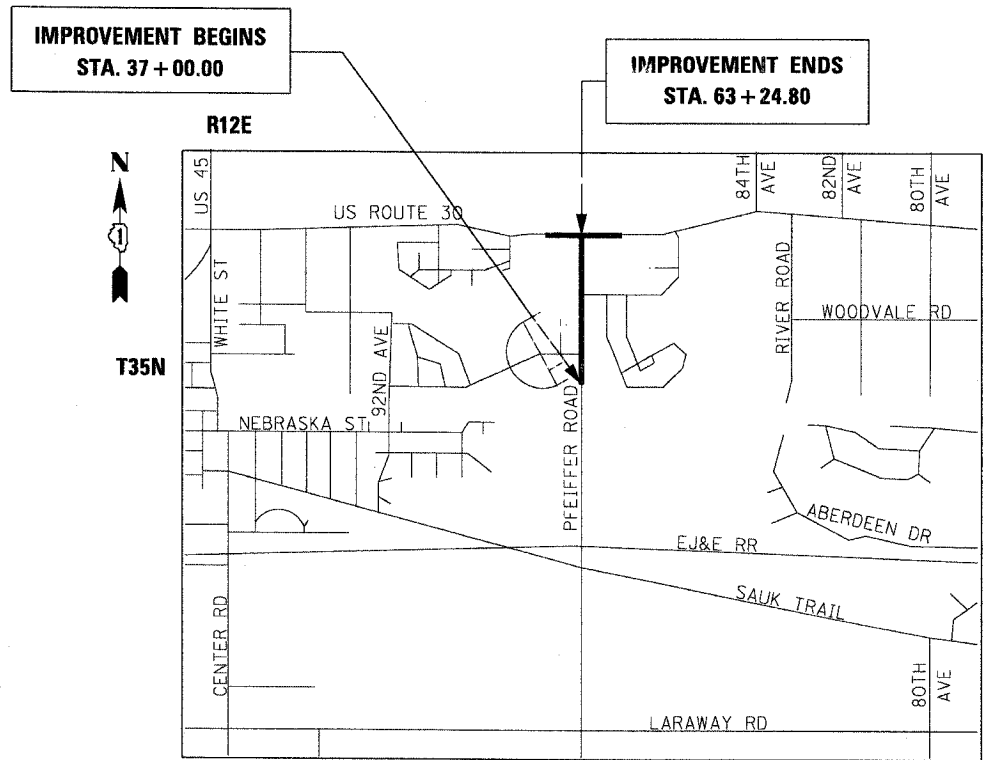
CONTRACT NO. 83803

STATE OF ILLINOIS
 DEPARTMENT OF TRANSPORTATION
 DIVISION OF HIGHWAYS

PLANS FOR PROPOSED FEDERAL AID HIGHWAY

PFEIFFER ROAD
 FAU ROUTE 3751
 SECTION: 99-00030-00-PV
 PROJECT M-7003 (799)

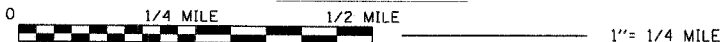
750 - FEET SOUTH OF CHARRINGTON COURT TO U.S. ROUTE 30
 ROADWAY RECONSTRUCTION AND TRAFFIC SIGNAL IMPROVEMENTS
 WILL COUNTY
 C - 91 - 417 - 99



IMPROVEMENT BEGINS
 STA. 37 + 00.00

IMPROVEMENT ENDS
 STA. 63 + 24.80

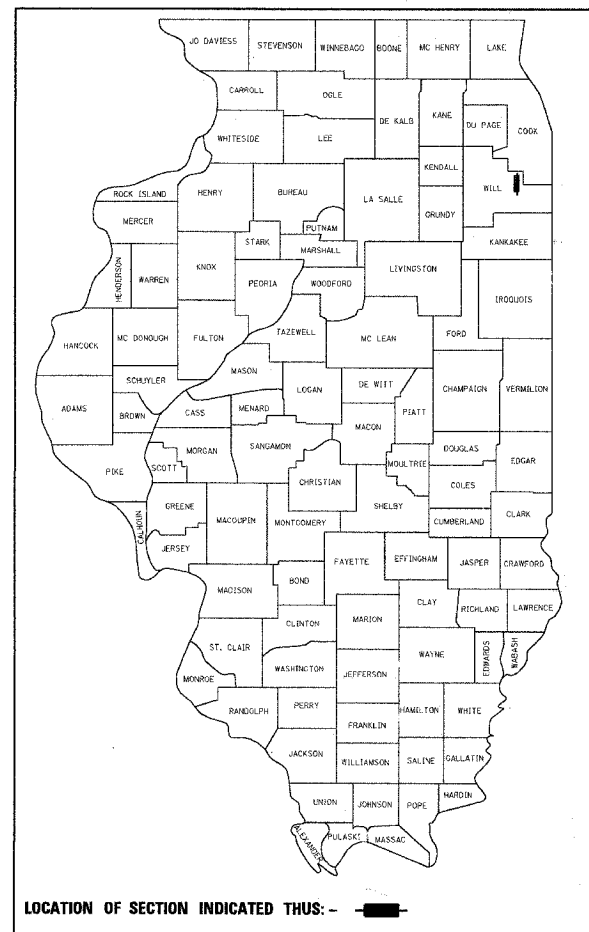
LOCATION MAP



PROJECT GROSS LENGTH (PFEIFFER ROAD) = 0.497 MILES (2624.80 FEET)
 PROJECT NET LENGTH (PFEIFFER ROAD) = 0.497 MILES (2624.80 FEET)

F.A.U. RTE.	SECTION	COUNTY	TOTAL SHEETS	SHEET NO.
3751		WILL	61+	1

• 99-00030-00-PV 83803



APPROVED JUNE 1 20 05
Paul C. Blain
 VILLAGE OF FRANKFORT

STATE OF ILLINOIS
 DEPARTMENT OF TRANSPORTATION
 PASSED June 6 20 05
Ch...
 DISTRICT ENGINEER OF LOCAL ROADS AND STREETS

APPROVED June 6, 20 05
Dina O'Keefe/AP
 REGION ENGINEER



Robert M. Goveia
 ROBERT M. GOVEIA
 11/30/05 4/1/05
 EXPIRES DATE

CTE | AECOM

PRINTED BY THE AUTHORITY OF THE STATE OF ILLINOIS

FEDERAL AID DESIGN ENGINEER: JESSICA MILLER (847) 705-4487