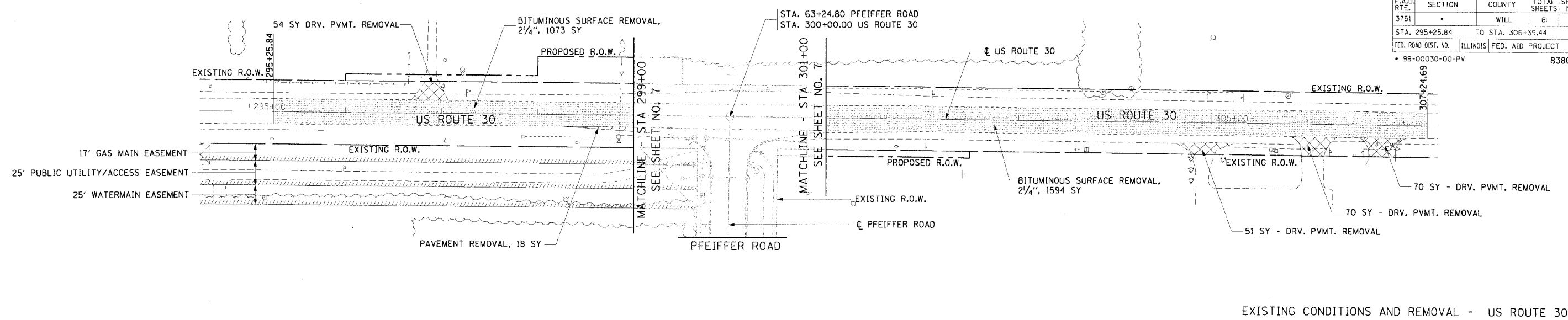
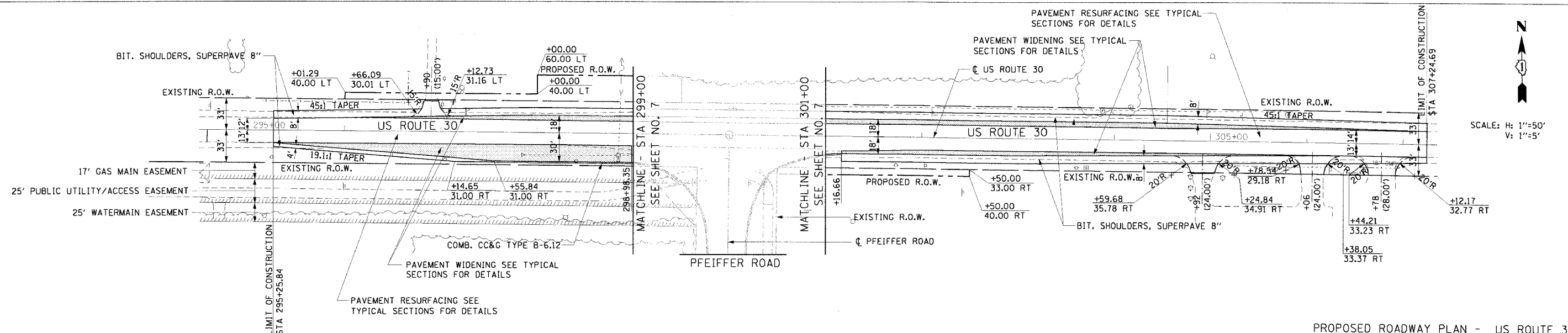


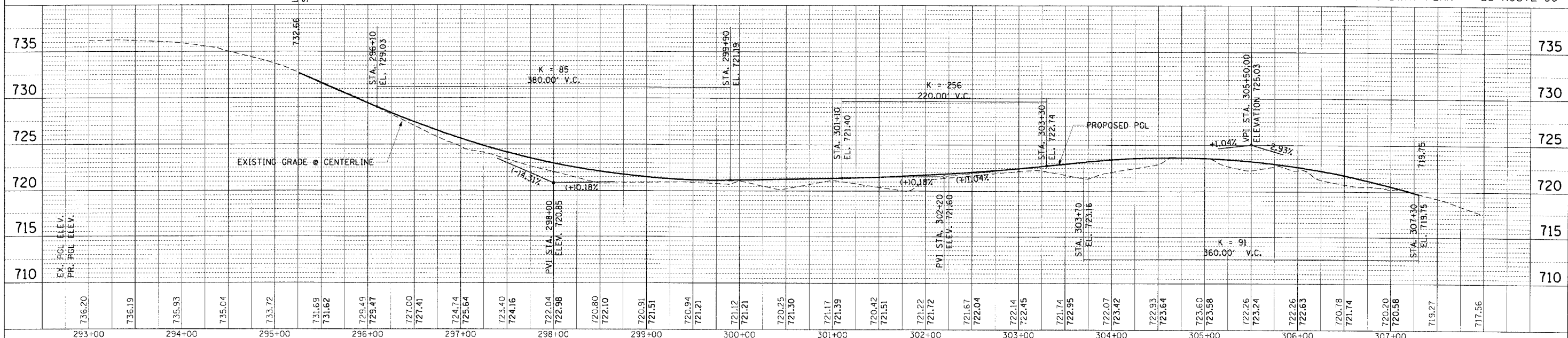
F.A.U. RTE.	SECTION	COUNTY	TOTAL SHEET NO.
3751		WILL	61 8
STA. 295+25.84		TO STA. 306+39.44	
FED. ROAD DIST. NO.	ILLINOIS	FED. AID PROJECT	
99-00030-00-PV			83803



EXISTING CONDITIONS AND REMOVAL - US ROUTE 30



PROPOSED ROADWAY PLAN - US ROUTE 30



PLAN AND PROFILE - US ROUTE 30  
STA 295+25.84 TO STA. 306+39.44

PLAN	DATE
NO. 1	
BY	
CHECKED	
DATE	

PROFILE	DATE
NO. 1	
BY	
CHECKED	
DATE	

P:\P40570\Civil\Sh\Plan and Profile\510.pp.03.sh  
06/21/2005 09:07 PM