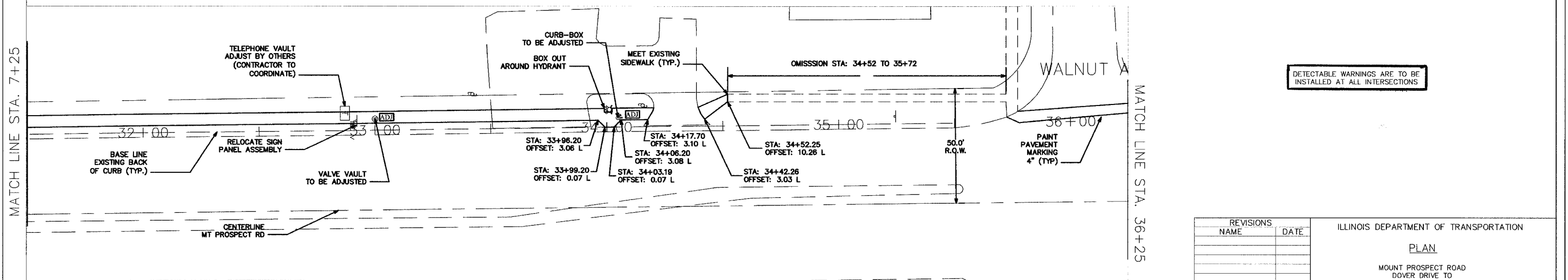
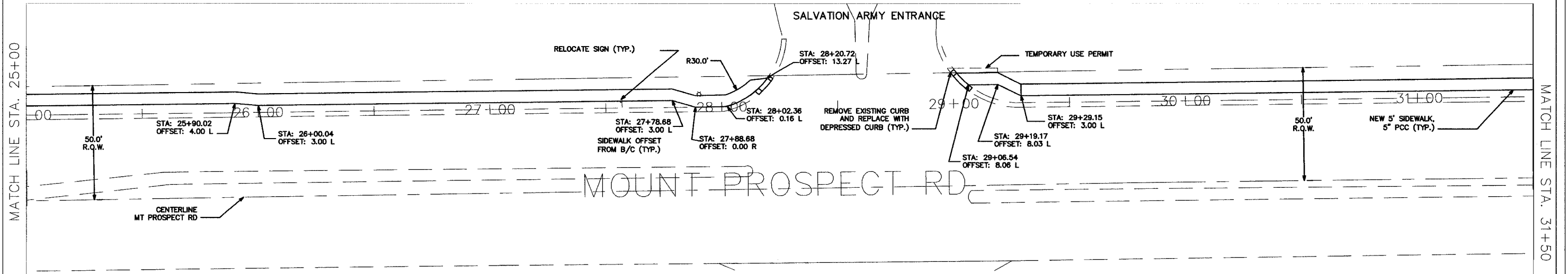
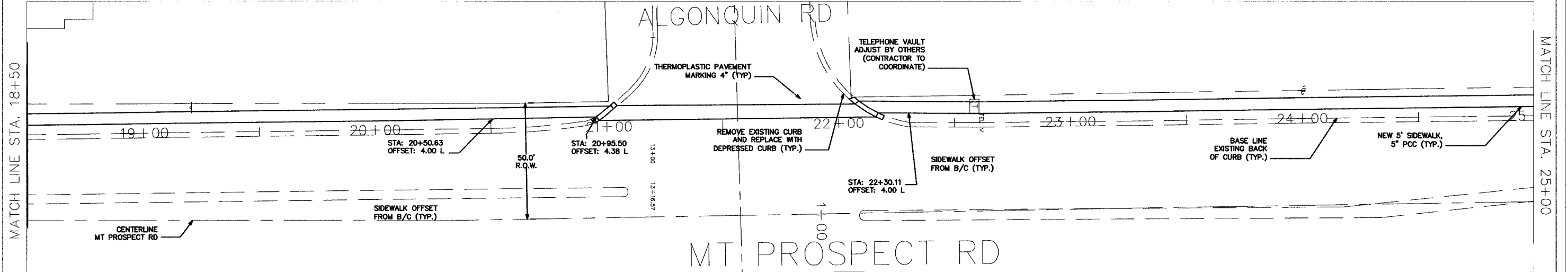


F.A. RTE.	SECTION	COUNTY	TOTAL SHEETS	SHEET NO.
05-00192-00-SW		COOK	11	6
MOUNT PROSPECT ROAD				
STA. 18+50			TO STA. 36+25	



DETECTABLE WARNINGS ARE TO BE INSTALLED AT ALL INTERSECTIONS

REVISIONS	
NAME	DATE

ILLINOIS DEPARTMENT OF TRANSPORTATION
PLAN
 MOUNT PROSPECT ROAD
 DOVER DRIVE TO
 DEMPSTER/THACKER STREET
 SCALE: 20 SCALE
 DATE: 5-31-05
 DRAWN BY: BLS
 CHECKED BY: A.J.D.