

FEDERAL AID PROGRAM ENGINEER: CHARLES F. RIDDLER, P.E. 847-705-4406

CONSULTANTS: ROBINSON ENGINEERING, LTD. 708-331-6700

STATE OF ILLINOIS
DEPARTMENT OF TRANSPORTATION
DIVISION OF HIGHWAYS

**PLANS FOR PROPOSED
FEDERAL AID HIGHWAY**

**PENNSY GREENWAY SPUR BIKE PATH
ILL./IND. STATE LINE TO LITTLE CALUMET RIVER
PROJECT NO.: CMM-8003(325)
SECTION NO.: 03-P4045-01-BT
LAN OAK PARK DISTRICT
VILLAGE OF LANSING
COOK COUNTY
JOB NO.: C-91-207-03**

F.A.M. RTE.	SECTION	COUNTY	TOTAL SHEETS	SHEET NO.
	03-P4045-01-BT	COOK	080	001
STA.		TO STA.		
FED. ROAD DIST. NO.		ILLINOIS	FED. AID PROJECT	

CONTRACT NO. 83811

**INDEX OF SHEETS
SEE SHEET NO. 2**

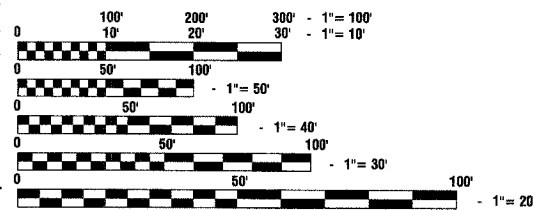
**STATE STANDARDS
SEE SHEET NO. 2**

DESIGN DESIGNATION - SHARED USE PATH

PENNSY GREENWAY SPUR
POSTED SPEED LIMIT - N/A
DESIGN PERIOD - 20 YEARS
DESIGN SPEED LIMIT - 20 mph

DESCRIPTION OF IMPROVEMENT

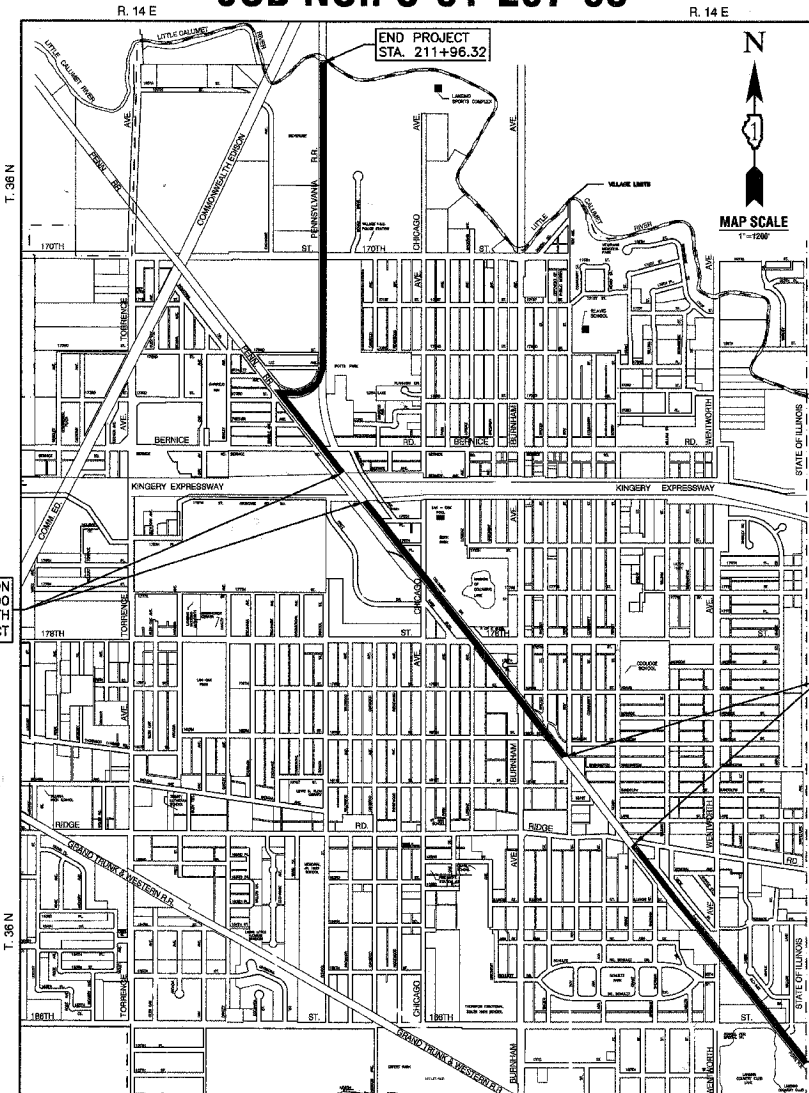
THIS IMPROVEMENT CONSISTS OF EARTH EXCAVATION, AND BITUMINOUS PAVEMENT CONSTRUCTION. ALL INCIDENTAL WORK AS NECESSARY TO COMPLETE THE IMPROVEMENT SHOWN HEREIN AND AS DESCRIBED IN THE SPECIFICATIONS.



FULL SIZE PLANS HAVE BEEN PREPARED USING STANDARD ENGINEERING SCALES, REDUCED SIZED PLANS WILL NOT CONFORM TO STANDARD SCALES, IN MAKING MEASUREMENTS ON REDUCED PLANS, THE ABOVE SCALES MAY BE USED.

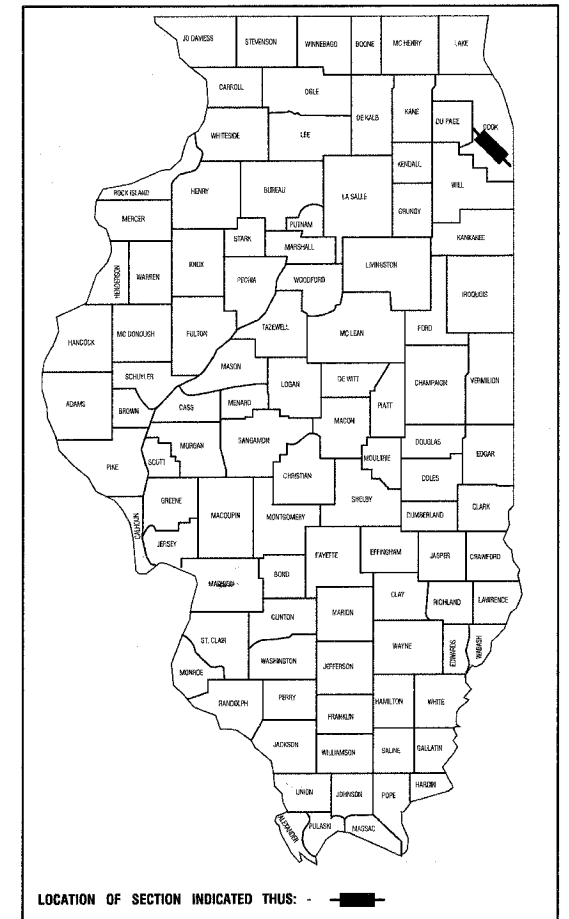
J. U. L. I. E.
JOINT UTILITY LOCATION INFORMATION FOR EXCAVATION
1-800-892-0123

CONTRACT NO. 83811



LOCATION MAP

GROSS LENGTH=20,200 FEET=3.83 MILES
NET LENGTH=14,540 FEET=2.75 MILES



STATE OF ILLINOIS
DEPARTMENT OF TRANSPORTATION

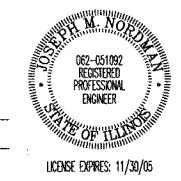
APPROVED July 20, 2005
[Signature]
LOCAL AGENCY OFFICIAL

APPROVED July 22, 2005
[Signature]
DISTRICT ENGINEER OF LOCAL ROADS & STREETS

APPROVED July 22, 2005
[Signature]
DEPUTY DIRECTOR OF HIGHWAYS, REGION ENGINEER

PREPARED BY OR UNDER THE
DIRECT SUPERVISION OF:

Joseph M. Snel
July 21, 2005



**PRINTED BY THE AUTHORITY OF
THE STATE OF ILLINOIS**