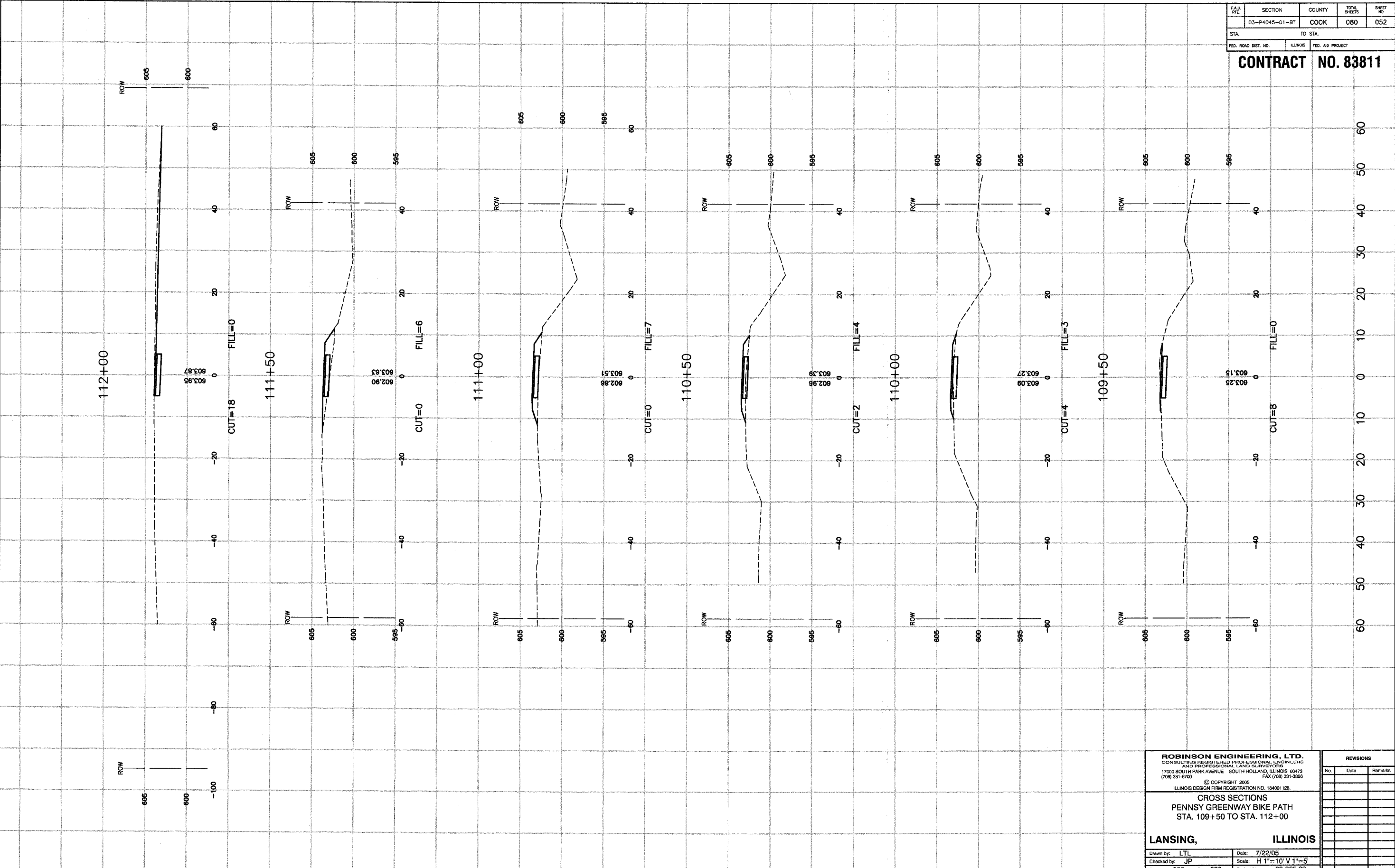


FED. AID PROJECT	ILLINOIS	TO STA.	TOTAL SHEETS	SHEET NO.
03-365-02			080	052
CONTRACT NO. 83811				



ROBINSON ENGINEERING, LTD.
CONSULTING REGISTERED PROFESSIONAL ENGINEERS
AND PROFESSIONAL LAND SURVEYORS
17000 SOUTH PARK AVENUE SOUTH HOLLAND, ILLINOIS 60473
(708) 331-6700 FAX (708) 331-3626
© COPYRIGHT 2005
ILLINOIS DESIGN FIRM REGISTRATION NO. 154001128.

**CROSS SECTIONS
PENNSY GREENWAY BIKE PATH
STA. 109+50 TO STA. 112+00**

LANSING, ILLINOIS

Drawn by: LTL Date: 7/22/05
Checked by: JP Scale: H 1"=10' V 1"=5'
Sheet 052 of 080 Project No. 03-365-02

REVISIONS		
No.	Date	Remarks