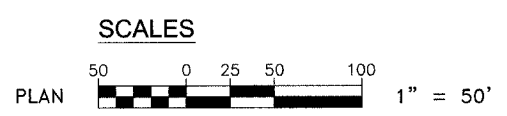


STATE OF ILLINOIS  
 DEPARTMENT OF TRANSPORTATION  
 DIVISION OF HIGHWAYS  
**SURFACE TRANSPORTATION  
 URBAN (STU) PROGRAM**  
 VILLAGE OF MANTENO  
 F.A.U. ROUTE 6512 (MAPLE STREET)  
 SECTION 05-00055-00-RS  
 PROJECT NO. M-5034(15)  
 C-93-049-05

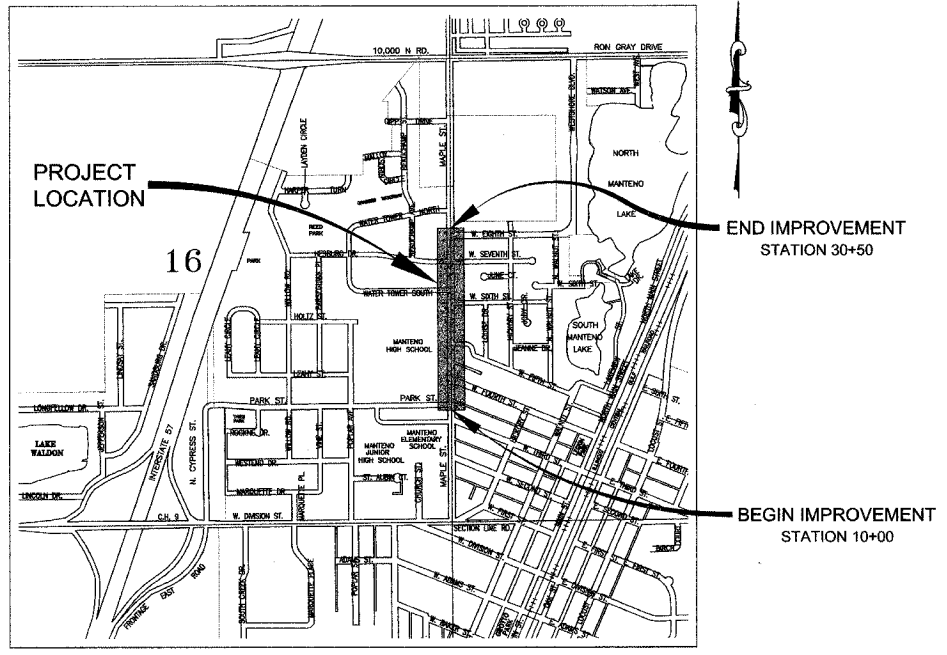
- INDEX OF SHEETS**
- 1 LOCATION MAP, STANDARDS LIST
  - 2 GENERAL NOTES, SUMMARY OF QUANTITIES, TYPICAL SECTIONS, PAVEMENT DESIGN
  - 3 PLAN VIEW, DETAILS



- STANDARDS**
- 701301-02 LANE CLOSURE, 2L, 2W, SHORT TIME OPERATIONS
  - 701501-03 URBAN LANE CLOSURE, 2L, 2W UNDIVIDED
  - 702001-05 TRAFFIC CONTROL DEVICES
  - 606001-02 CONCRETE CURB TYPE B AND COMBINATION CONCRETE CURB AND GUTTER
  - 780001-01 TYPICAL PAVEMENT MARKINGS

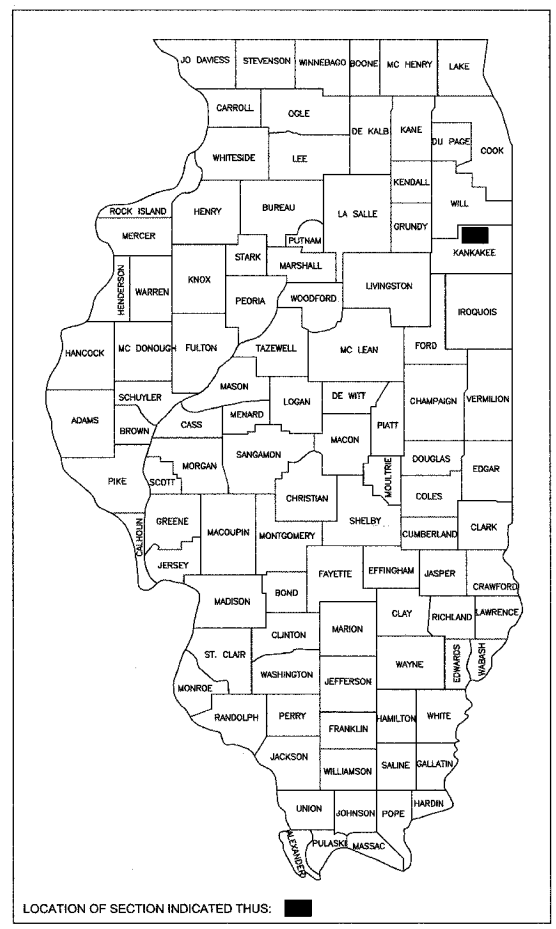
**DESIGN DESIGNATION - COLLECTOR**

<b>STA. 10+00 TO STA. 19+60</b>	
2005 ADT = <u>7,000</u> M.U. <u>0.6 %</u> S.U. <u>2.4 %</u> P.V. <u>97 %</u>	
DESIGN 2013 ADT = <u>7,560</u> M.U. <u>0.6 %</u> S.U. <u>2.4 %</u> P.V. <u>97 %</u>	
SEE SHEET <u>2</u> FOR PAVEMENT DESIGN	
<b>STA. 19+60 TO STA. 30+50</b>	
2005 ADT = <u>1,850</u> M.U. <u>0.6 %</u> S.U. <u>2.4 %</u> P.V. <u>97 %</u>	
DESIGN 2013 ADT = <u>1,998</u> M.U. <u>0.6 %</u> S.U. <u>2.4 %</u> P.V. <u>97 %</u>	
SEE SHEET <u>2</u> FOR PAVEMENT DESIGN	



**LOCATION MAP**  
NOT TO SCALE

GROSS LENGTH OF IMPROVEMENT = 2,050 FEET = 0.388 MILES  
 NET LENGTH OF IMPROVEMENT = 2,050 FEET = 0.388 MILES



PREPARED IN ACCORDANCE WITH  
THE POLICIES FOR LOCAL AGENCY  
PAVEMENT PRESERVATION

STATE OF ILLINOIS  
 DEPARTMENT OF TRANSPORTATION  
 DIVISION OF HIGHWAYS

APPROVED 5/18, 20 05  
  
 VILLAGE PRESIDENT, VILLAGE OF MANTENO

PASSED 5/20, 20 05  
  
 DISTRICT LOCAL ROADS AND STREETS ENGINEER

APPROVED 5/20, 20 05  
  
 REGION 2 ENGINEER

LANCE G. BEIGH P.E. # 062-048363 DATE 5/13/05  
 EXPIRATION DATE OF P.E. LICENSE: 11-30-05

REVISIONS				
NO.	DATE	BY	GENERAL DESCRIPTION	SHEETS CHANGED
1	05/03/05	MG	PER IDOT REVIEW	1 - 3
2	05/12/05	MG	PER IDOT REVIEW	1 - 3

F.A.U. NO.	SECTION	COUNTY	TOTAL SHEETS	SHEET NO.
6512	*	KANKAKEE	3	1

CONTRACT NO. 87310

FED. ROAD DIST. NO. ILLINOIS  
 \* 05-00055-00-RS

**TYSON ENGINEERING, INC.**  
 CONSULTING CIVIL ENGINEERS  
 DESIGN FIRM LICENSE #184-001136  
 367 SOUTH SCHUYLER AVENUE  
 KANKAKEE, ILLINOIS 60901  
 PHONE (815) 932-7406

This document and the ideas and designs incorporated herein, as an instrument of professional service, is the property of Tyson Engineering Inc. and is not to be used in whole or in part, for any other project without written authorization of Tyson Engineering Inc.  
 Do not scale drawings. Use dimensions only.  
 Contractor shall be responsible for verifying all dimensions.  
 Information herein and herein is confidential.

REVISIONS				
NO.	DATE	BY	DESCRIPTION	
1	05/03/05	MG	PER IDOT REVIEW	
2	05/12/05	MG	PER IDOT REVIEW	

**VILLAGE OF  
MANTENO**

**PROPOSED  
SURFACE TRANSPORTATION  
URBAN (STU) OVERLAYS**

**SECTION 05-00055-00-RS**

COVER SHEET	
DATE: <u>3/4/05</u>	JOB NO. <u>E04149</u>
SCALE: <u>N/A</u>	FILE NO.
DRAWN BY: <u>MRG</u>	SHEET <u>1</u>
CHECKED BY: <u>SRM</u>	

CALL J.U.L.I.E. BEFORE YOU DIG  
 (Joint Utility Locating Information For Excavators)  
 PH.# 1-800-892-0123

CONTRACT NO. 87310

\\ntmain\c\drive\projects\2004\E04149.dwg\E04149.dwg 5/13/2005 2:15:22 PM CDT