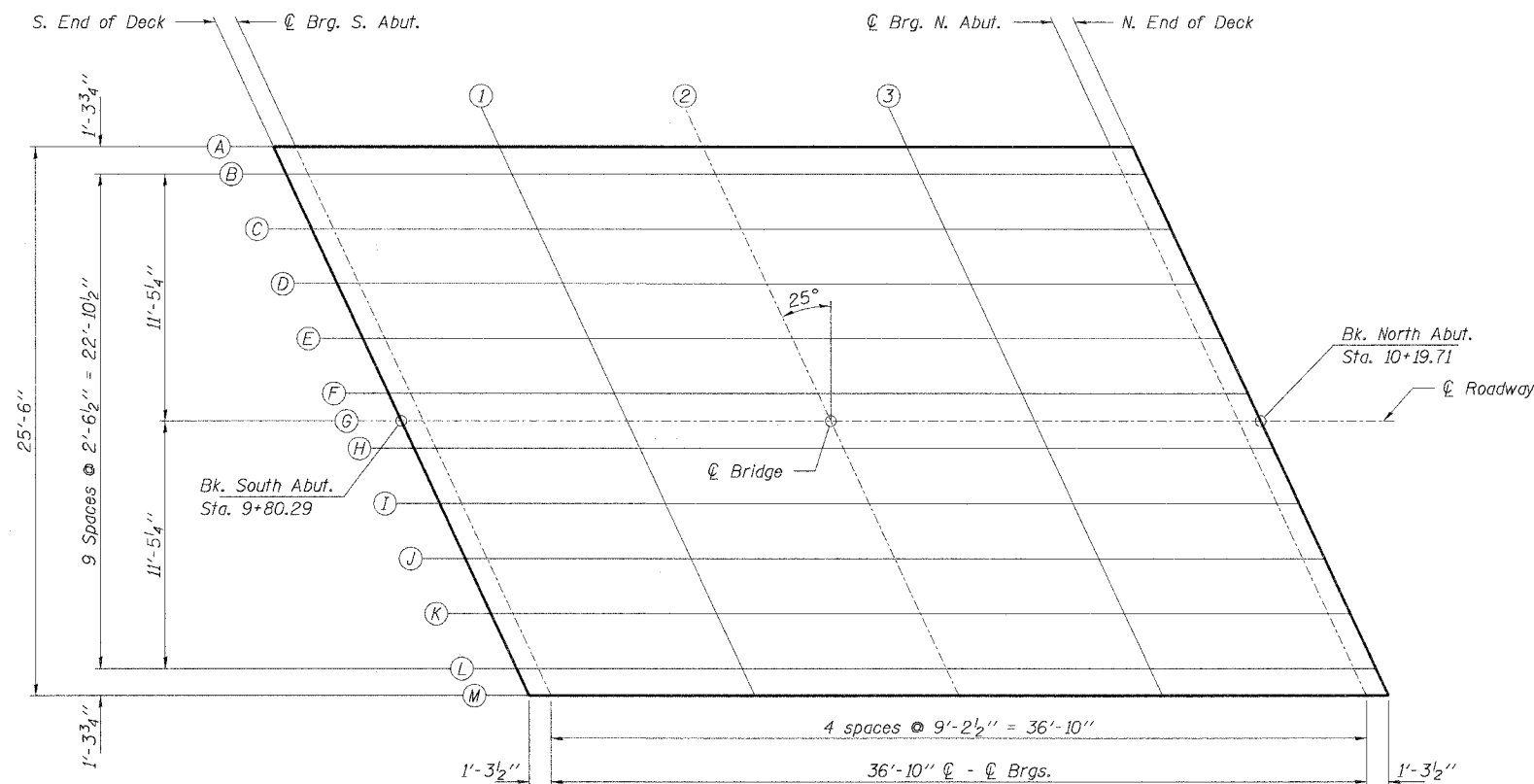
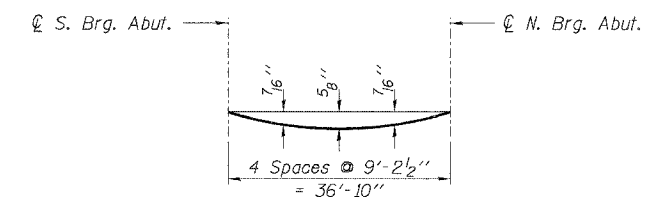


ROUTE NO.	SECTION	COUNTY	TOTAL SHEETS	SHEET NO.
F.A.S. 585	02-00063-00-BR	BROWN	16	9
FED. ROAD DIST. NO.	ILLINOIS	FED. AID PROJECT	BHS-585(104)	

CONTRACT NO. 93399



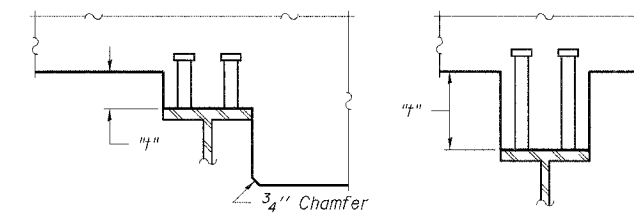
PLAN



DEAD LOAD DEFLECTION DIAGRAM

(Includes weight of concrete only.)

Note: The above deflections are not to be used in the field if the engineer is working from the grade elevations adjusted for dead load deflections as shown on sheet 10.



At Minimum Fillet

At Maximum Fillet

To determine "h": After all structural steel has been cleaned and painted, elevations of the top flanges of the beams shall be taken at intervals shown on sheet 10. These elevations, subtracted from the "Theoretical Grade Elevations Adjusted for Dead Load Deflection" shown on sheet 10, minus slab thickness, equals the fillet heights "h" above top flange of beams.

FILLET HEIGHTS

	Rice, Berry and Associates A Division of Hampton, Lenzini and Renwick, Inc. Civil & Structural Engineers 801 S. Durkin Drive Springfield, Illinois 62704 217-546-3400	SLAB ELEVATIONS SECTION 02-00063-00-BR C.H. II / F.A.S. 585 BROWN COUNTY STRUCTURE NO. 005-3020 / STATION 10+00
	Account Number 12-16-0017-1 Date: 06/10/05	
DESIGNED: T.P.L. CHECKED: S.W.M. DRAWN: D.T.M.		