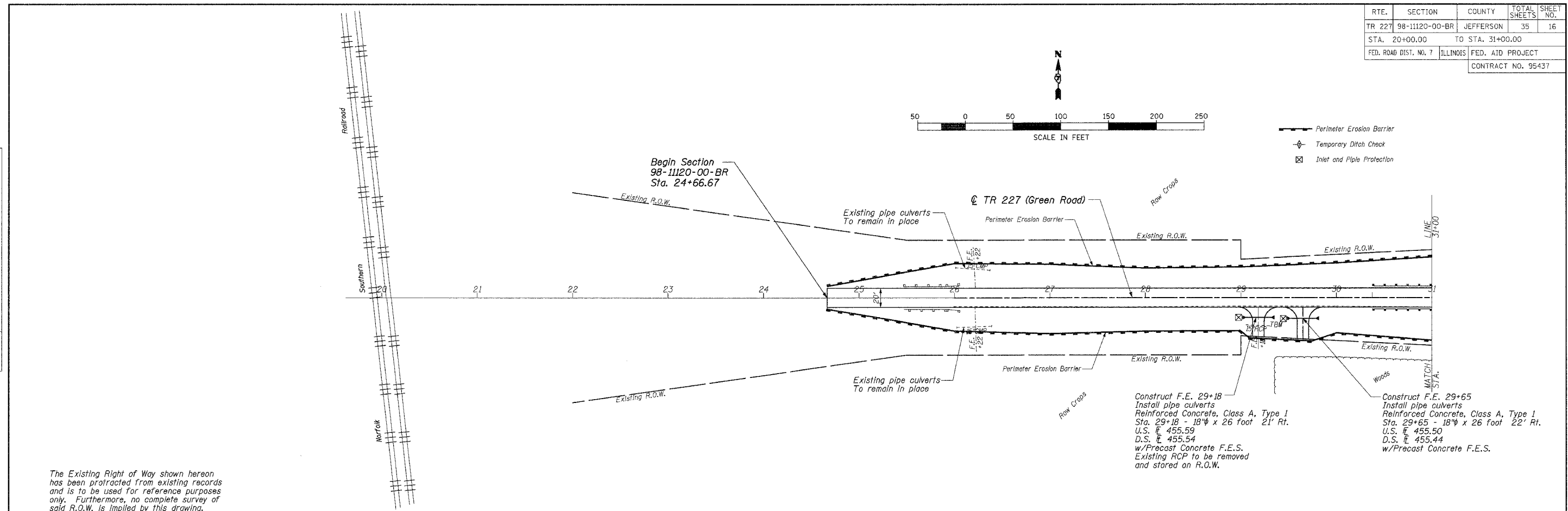


RTE.	SECTION	COUNTY	TOTAL SHEETS	SHEET NO.
TR 227	98-11120-00-BR	JEFFERSON	35	16
STA. 20+00.00		TO STA. 31+00.00		
FED. ROAD DIST. NO. 7		ILLINOIS		FED. AID PROJECT
CONTRACT NO. 95437				

PLAN	DATE	BY
SURVEYED		
NOTE BOOK		
NO.		
ALIGNED		
CHECKED		
FILE NAME		

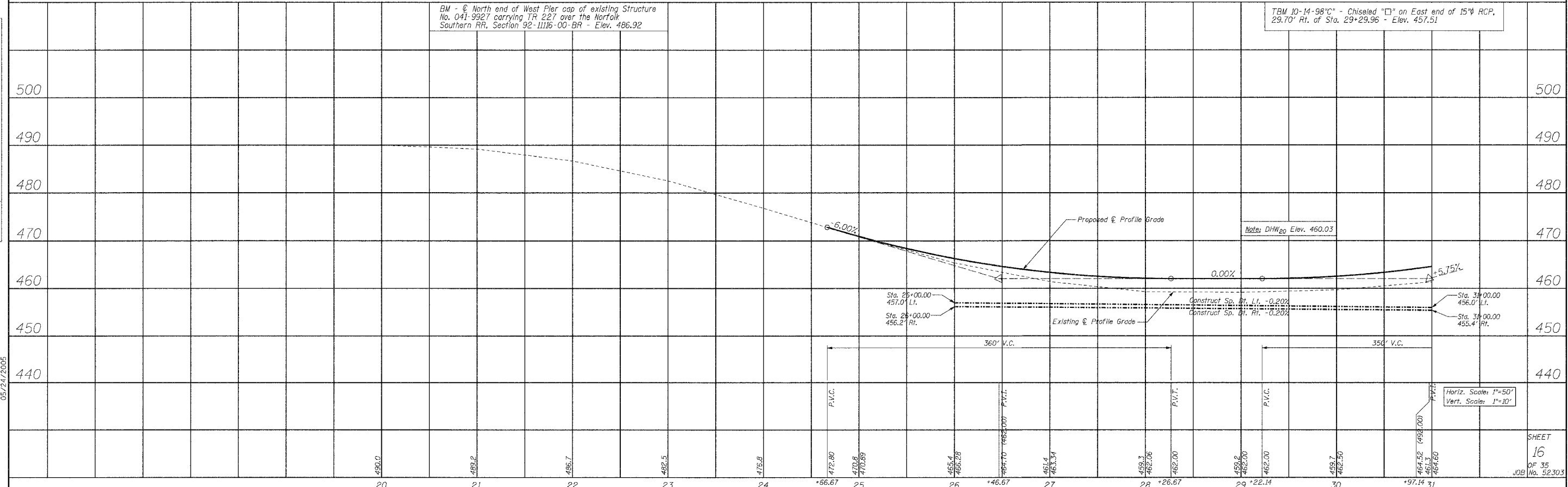
PROFILE	DATE	BY
SURVEYED		
GRADES CHECKED		
STRUCTURE		
NOTATION		
NO.		



The Existing Right of Way shown hereon has been protracted from existing records and is to be used for reference purposes only. Furthermore, no complete survey of said R.O.W. is implied by this drawing.

Construct F.E. 29+18
Install pipe culverts
Reinforced Concrete, Class A, Type 1
Sta. 29+18 - 18" x 26 foot 21' Rt.
U.S. \bar{E} 455.59
D.S. \bar{E} 455.54
w/Precast Concrete F.E.S.
Existing RCP to be removed
and stored on R.O.W.

Construct F.E. 29+65
Install pipe culverts
Reinforced Concrete, Class A, Type 1
Sta. 29+65 - 18" x 26 foot 22' Rt.
U.S. \bar{E} 455.50
D.S. \bar{E} 455.44
w/Precast Concrete F.E.S.



05/24/2005