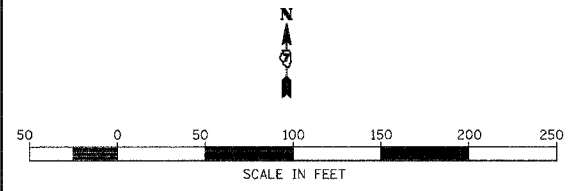
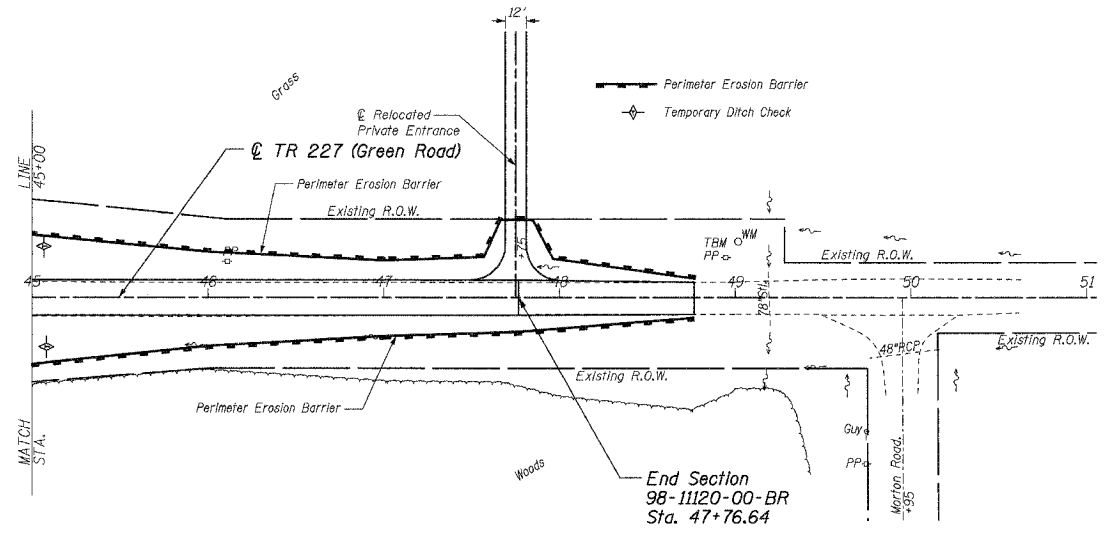


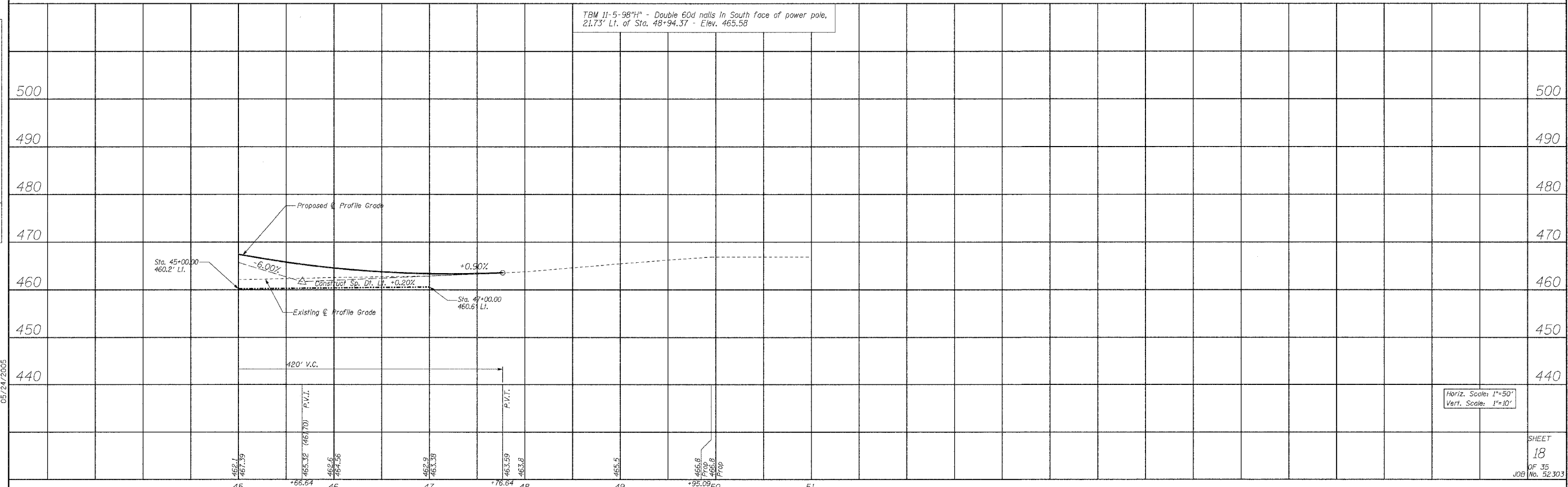
RTE.	SECTION	COUNTY	TOTAL SHEETS	SHEET NO.
TR 227	98-11120-00-BR	JEFFERSON	35	18
STA. 45+00.00		TO STA. 51+00.00		
FED. ROAD DIST. NO. 7		ILLINOIS FED. AID PROJECT		
CONTRACT NO. 95437				



DATE	BY
DATE	BY
DATE	BY



DATE	BY
DATE	BY
DATE	BY



TBM 11-5-98 1/4" - Double 60d nails in South face of power pole, 21.73' Lt. of Sta. 48+94.37 - Elev. 465.58

05/24/2005

Horiz. Scale: 1"=50'
Vert. Scale: 1"=10'

SHEET 18 OF 35 JOB No. 52303