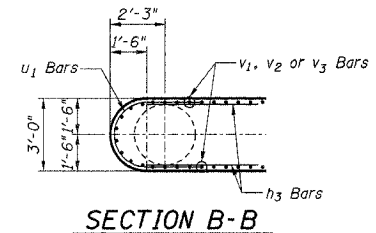
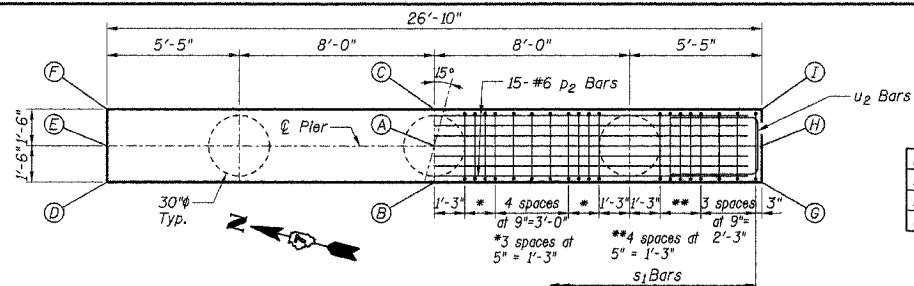


ROUTE	SECTION	COUNTY	TOTAL SHEETS	SHEET NO.
TR 227	98-1120-00-BR	JEFFERSON	35	30
FED. ROAD DIST. NO. 7		ILLINOIS	FED. AID PROJECT	
CONTRACT NO. 95437				



SECTION B-B



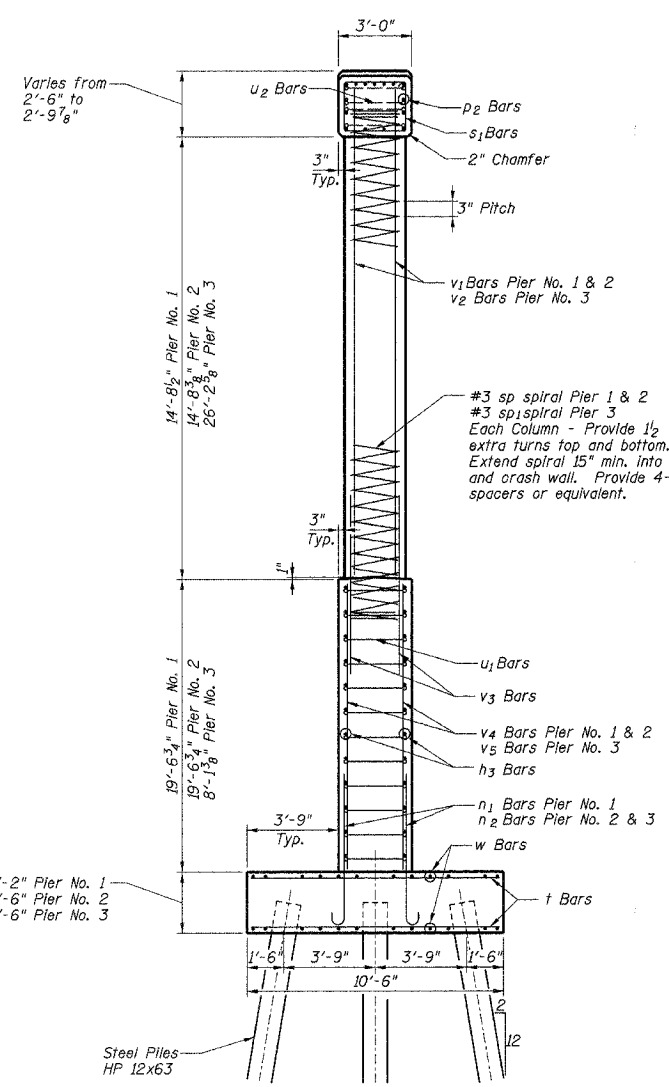
TOP PLAN

TOP OF PIER CAP ELEVATIONS

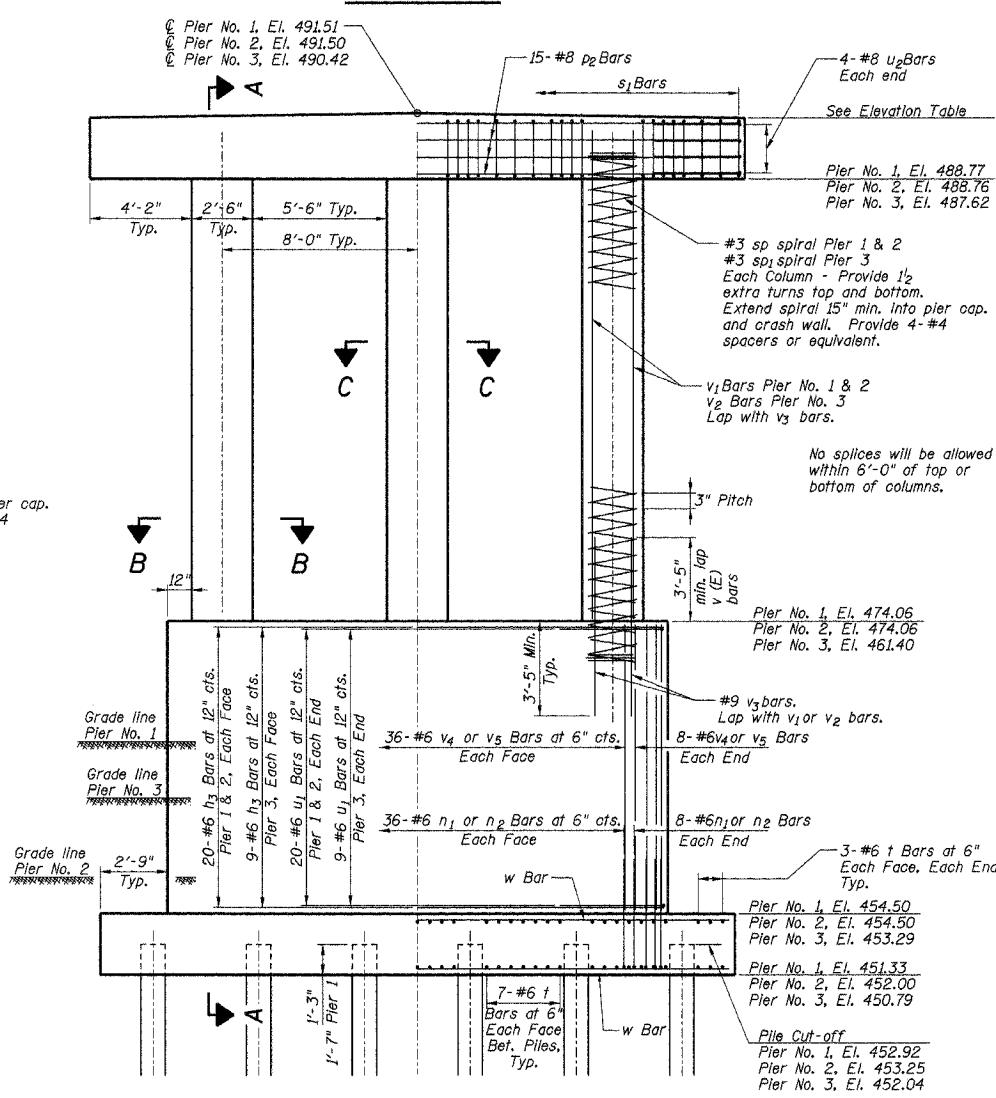
Location	A	B	C	D	E	F	G	H	I
Pier No. 1	491.51	491.49	491.51	491.27	491.28	491.28	491.36	491.38	491.38
Pier No. 2	491.50	491.50	491.48	491.32	491.32	491.29	491.27	491.27	491.26
Pier No. 3	490.42	490.44	490.38	490.31	490.29	490.25	490.16	490.15	490.12

PILE DATA

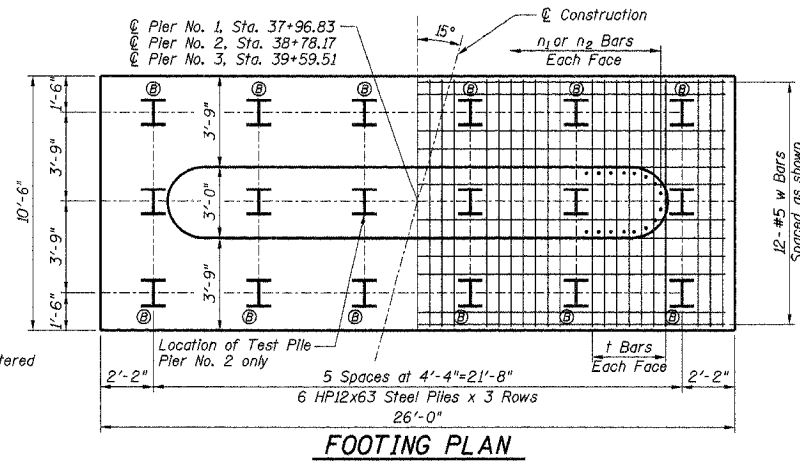
Type: Steel HP12x63
 Number Required:
 Pier No. 1 18
 Pier No. 2 17+1 Test Pile
 Pier No. 3 18
 Capacity: Drive to Refusal
 Estimated Length:
 Pier No. 1 43 foot
 Pier No. 2 43 foot
 Pier No. 3 44 foot
 Total Estimated Length: 2297 foot
 (Does not include Test Pile)
 Steel HP12x53



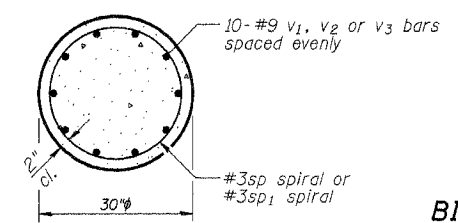
SECTION A-A



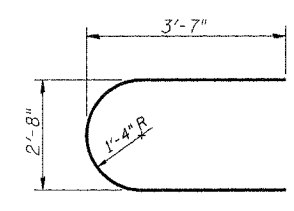
ELEVATION



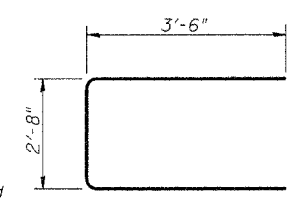
FOOTING PLAN



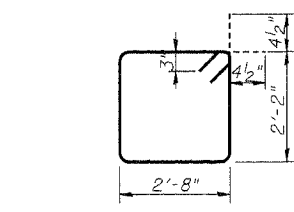
SECTION C-C



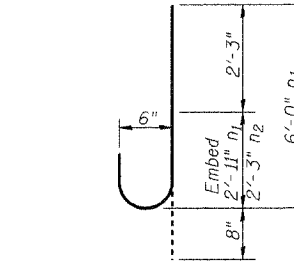
BAR u1



BAR u2



BARS s1



BAR n1 & n2

BILL OF MATERIAL PIER NO. 1 OR 2

Bar	No.	Size	Length	Shape
h3	20	#6	17'-6"	—
n1	82	#6	6'-0"	U
p2	15	#8	26'-6"	—
s1	38	#4	10'-5"	□
t	82	#6	10'-2"	—
u1	40	#8	9'-8"	U
u2	8	#6	11'-5"	U
v1	30	#9	16'-10"	—
v3	30	#9	7'-0"	—
v4	88	#6	19'-9"	—
w	24	#5	25'-8"	—
sp	3	#3	17'-4"	W

Concrete Structures		Cu. Yd.	
Pier 1		91.1	
Pier 2		84.4	
Reinforcement Bars		Pound	
Piers 1 or 2		11390	

BILL OF MATERIAL PIER NO. 3

Bar	No.	Size	Length	Shape
h3	9	#6	17'-6"	—
n2	82	#6	5'-3"	U
p2	15	#8	26'-6"	—
s1	38	#4	10'-5"	□
t	82	#6	10'-2"	—
u1	18	#8	9'-8"	U
u2	8	#6	11'-5"	U
v2	30	#9	28'-6"	—
v3	30	#9	7'-0"	—
v5	88	#6	8'-3"	—
w	24	#5	25'-8"	—
sp	3	#3	17'-4"	W

Concrete Structures		Cu. Yd.	
Pier 3		65.5	
Reinforcement Bars		Pound	
Pier 3		10570	

GENERAL NOTES

Space cap reinforcement to miss dowel rods.
 Minimum lap for spirals = 18"
 **Length is height of spiral.
 All exposed edges shall have standard 3/4" chamfer, unless otherwise noted.
 All clearances between reinforcement bars and form surface shall be 2", unless otherwise noted.
 The Contractor shall drive one (1) Steel HP12x63 Test Pile in a permanent location at Pier No. 2 as directed by the Engineer before ordering the remainder of the piles.

PIER DETAILS
 PROPOSED BRIDGE OVER
 UNION PACIFIC RAILROAD AND CASEY FORK
 TR 227 (GREEN ROAD)
 SECTION 98-1120-00-BR
 JEFFERSON COUNTY, ILLINOIS
 Sheet 30 of 35
 Job No. 52303