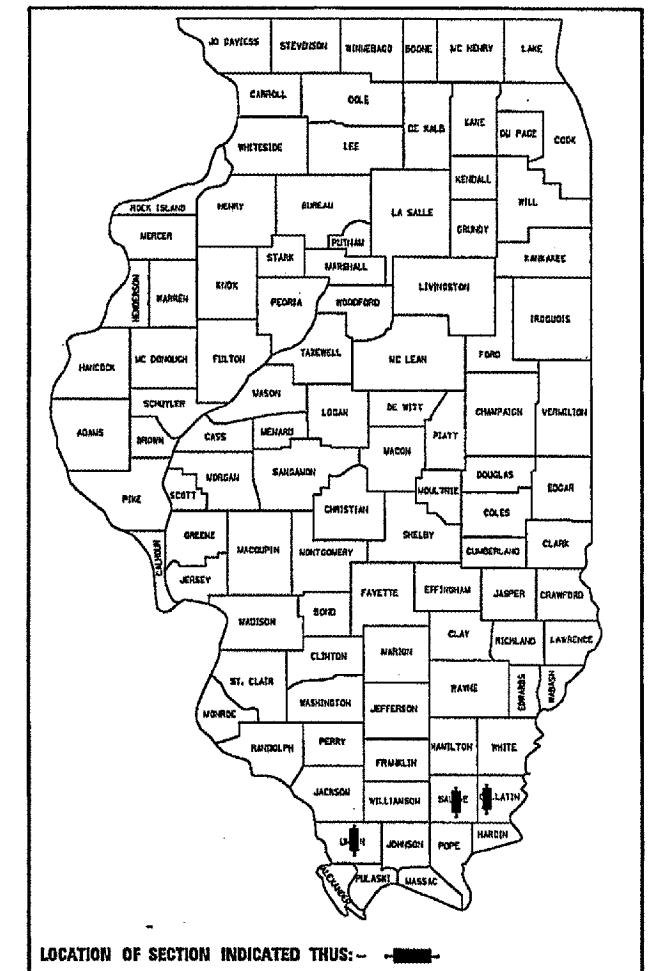


F.A.E. TITLE	SECTION	COUNTY	TOTAL SHEETS	SHEET NO.
			12	1
STA. _____	TO STA. _____			
FED. ROAD DIST. NO. _____	ILLINOIS FED. AID PROJECT			

•VARIOUS  
 ••D9 CONT MAINT FY 06-1  
 •••VARIOUS

D-99-027-05



STATE OF ILLINOIS  
 DEPARTMENT OF TRANSPORTATION  
 DIVISION OF HIGHWAYS

**PROPOSED  
 HIGHWAY PLANS**

VARIOUS ROUTES  
 SECTION D-9 CONT. MAINT. FY 06-1

VARIOUS COUNTIES  
 C-99-036-05

FOR INDEX OF SHEETS, SEE SHEET NO. ....

ADT INFORMATION

LOC. 1: IL. 142 NORTH OF IL. 13 AT EQUALITY (2003)  
 IL 142 - 4650; 44% TRUCKS  
 IL 13 (WEST) - 3600; 15% TRUCKS  
 IL 13 (EAST) - 6000; 36% TRUCKS

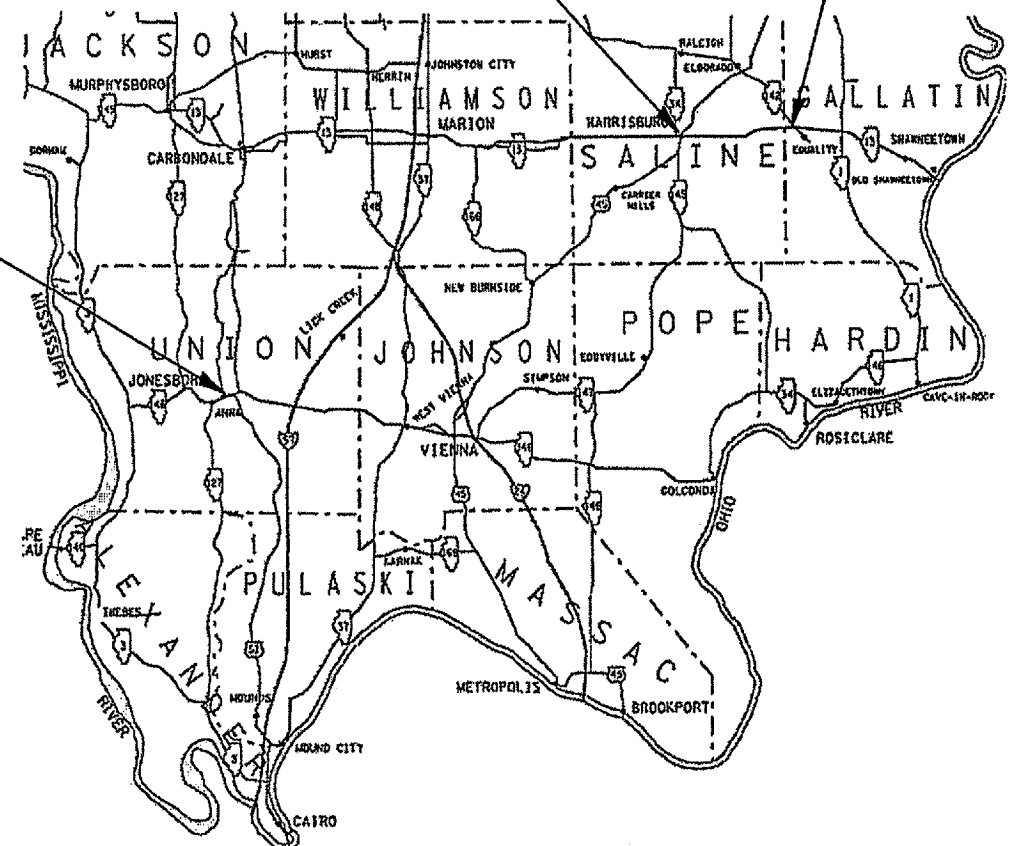
LOC. 2: IL. 13/US 45 AT HARRISBURG (2003)  
 IL 13 (WEST) - 12,800; 10% TRUCKS  
 IL 13 (EAST) - 4800; 7% TRUCKS  
 US 45 (NORTH) - 16,100; 10% TRUCKS  
 US 45 (SOUTH) - 17,500; 8% TRUCKS

LOC. 3: IL 146 AND MAIN ST. IN ANNA (2003)  
 IL 146 (EAST) - 18,300; 8% TRUCKS  
 IL 146 (MAIN ST. SOUTH) - 11,800; 9% TRUCKS

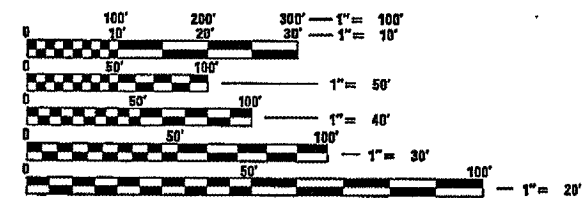
PROPOSED LOCATION 1  
 IL 142 STA. 313+00.00  
 TO STA. 316+85.00

PROPOSED LOCATION 2  
 INTERSECTION OF IL. 13 AND US 45 (HARRISBURG)

PROPOSED LOCATION 3  
 INTERSECTION OF IL 146 (ANNA) AND MAIN ST.



TOWNSHIPS: EQUALITY AND HARRISBURG  
 PRECINCTS: ANNA



FULL SIZE PLANS HAVE BEEN PREPARED USING STANDARD ENGINEERING SCALES. REDUCED SIZED PLANS WILL NOT CONFORM TO STANDARD SCALES. IN MAKING MEASUREMENTS ON REDUCED PLANS, THE ABOVE SCALES MAY BE USED.

J.U.L.I.E.  
 JOINT UTILITY LOCATION INFORMATION FOR EXCAVATION  
 1-800-892-0123

CONTRACT NO. 98923

STATE OF ILLINOIS  
 DEPARTMENT OF TRANSPORTATION  
 DIVISION OF HIGHWAYS

SUBMITTED July 7, 2005  
Mike Chame  
 DEPUTY DIRECTOR OF HIGHWAYS, REGION ENGINEER

August 19, 2005  
Mike Stene  
 ENGINEER OF DESIGN AND ENVIRONMENT

August 19, 2005  
Victor Mader  
 DIRECTOR OF HIGHWAYS, CHIEF ENGINEER

PRINTED BY THE AUTHORITY  
 OF THE STATE OF ILLINOIS

F.A. RT#	SECTION	COUNTY	TOTAL SHEETS	SHEET NO.
---	---	---	13	2
STA. TO STA.		FED. ROAD DIST. NO. ILLINOIS FED. AID PROJECT		

- VARIOUS
- D9 CONT MAINT FY 06-1
- VARIOUS

INDEX OF SHEETS

GENERAL NOTES

SHEET NO.	DESCRIPTION
1	COVER SHEET
2	SIGNATURE SHEET, INDEX OF SHEETS AND HIGHWAY STANDARDS, GENERAL NOTES
3	SUMMARY OF QUANTITIES
4	SCHEDULES - PAVEMENT MARKING; PAVEMENT PAY ITEMS
5	LOCATION MAP AND TYPICAL - ILL 142 AT ILL 13 NEAR EQUALITY.
6	LOCATION 1 - ILL. 142 DETAIL OF PAVEMENT MARKING LAYOUT
7	LOCATION 1 - ILL 142 PLAN DETAIL
8	LOCATION 1 - STAGED CONSTRUCTION
9	LOCATION MAP AND TYPICAL - HARRISBURG INTERSECTION OF ILL 13 AND US 45.
10	INTERSECTION DETAIL - HARRISBURG AT ILL 13 AND US 45.
11	LOCATION MAP AND TYPICAL - ANNA INTERSECTION OF ILL 146 AND MAIN ST.
12	INTERSECTION DETAIL - ANNA AT ILL 146 AND MAIN ST.

AT THE PCC INLAY LOCATIONS, PROPOSED SAW CUTS WILL BE SAWED TO MATCH EXISTING CUTS ON ADJACENT PAVEMENT.

THE PORTLAND CONCRETE CEMENT PAVEMENT 10" AT ILL. 142 SHALL BE CONSTRUCTED ACCORDING TO ART. 1020.05 FOR SPECIAL PATCHING MIXTURE. THE USE OF CALCIUM CHLORIDE SHALL BE ALLOWED IN THE MIX.

AT ALL LOCATIONS WHERE THE PROPOSED BITUMINOUS OR CONCRETE PAVEMENT JOINS AN EXISTING BITUMINOUS OR CONCRETE PAVEMENT, A FULL DEPTH SAWED JOINT SHALL BE CONSTRUCTED. THE COST OF THIS JOINT WILL BE INCLUDED IN THE COST OF THE TYPE OF PAVEMENT BEING CONSTRUCTED.

CORE SURVEY AT HARRISBURG

ILL 13 Lt. Sta. 1076+09 - 2 3/4" Conc. over 15" Bituminous  
 ILL 13 Sta. 1075 +65 - 3 1/4" Conc. over 4 3/4" Bit. on 7" Conc.  
 US 45 Lt. Sta. 29+60 - 3" Conc. over 4 1/2" Bit. on 7 1/4" Conc.

BITUMINOUS SHOULDER REQUIREMENTS:

Location(s):	Bituminous Shoulders 14"
Mixture Use(s):	Bituminous Shoulders, Superpave
AC/PG:	PG58-22
RAP% (Max.):	50
Design Air Voids:	2.0%, 30 Gyration Superpave Design
Mixture Composition: (Gradation Mixture)	Bituminous Aggregate Mixture , Superpave
Friction Aggregate:	None

Commitments: None

HIGHWAY STANDARDS

420001-05	701306-01
420601-03	701311-02
420701-01	701201-02
482006-01	701701-04
606001-02	702001-04
606301-02	780001-01
701011-01	

Prepared By: *Joe Zlaniewicz*  
 DISTRICT STUDIES & PLANS ENGINEER

Examined By: *James Travis Emery*  
 DISTRICT LAND ACQUISITION ENGINEER

Examined By: *Connie Nelson*  
 DISTRICT PROGRAM DEVELOPMENT ENGINEER

Examined By: *Drey L. Smith*  
 DISTRICT OPERATIONS ENGINEER

Examined By: *Joseph Lynn*  
 DISTRICT CONSTRUCTION ENGINEER

Examined By: *Bruce Phelps*  
 DISTRICT MATERIALS ENGINEER

Examined By: *Walter Clayton*  
 DISTRICT PROJECT IMPLEMENTATION ENGINEER

Examined By: *Walter Clayton*  
 ASSISTANT REGIONAL ENGINEER

Approved By: *Mary C. Hamy*  
 DEPUTY DIRECTOR OF HIGHWAYS, REGION ENGINEER

DATE: *July 7* 20 *05*

PLOT DATE: 6/29/2005  
 FILE NAME: c:\p\m\m\98923\98923.dwg  
 PLOT SCALE: 1/8"=1'-0"  
 USER NAME: mcdonald

F.A.P. RTE.	SECTION	COUNTY	TOTAL SHEETS	SHEET NO.
---	---	---	12	3
STA. -----		TO STA. -----		
FED. ROAD DIST. NO.	ILLINOIS	FED. AID PROJECT		

## SUMMARY OF QUANTITIES

### VARIOUS ROUTES

LOC. 1	LOC. 2	LOC. 3
ILL 142	ILL 13/US 45	ILL 146/MAIN ST.
RURAL	URBAN (HARRISBURG)	URBAN (ANNA)
100% STATE		
ROADWAY		
J000		

•VARIOUS  
 •D9 CONT MAINT FY 06-1  
 •••VARIOUS

PAY CODE NO.	ITEM DESCRIPTION	UNIT	TOTAL QUANTITY	QUANTITY	QUANTITY	QUANTITY
X4200830	PORTLAND CEMENT CONCRETE INLAY 3 INCH	SQ YD	108		45	63
X6060500	CORRUGATED MEDIAN REMOVAL	SQ FT	160	160		
Z0048665	RAILROAD PROTECTIVE LIABILITY INSURANCE	L SUM	1			1
31100300	SUBBASE GRANULAR MATERIAL, TYPE A 4"	SQ YD	485	485		
42000500	PORTLAND CEMENT CONCRETE PAVEMENT 10 INCH	SQ YD	445	445		
42001200	PAVEMENT FABRIC	SQ YD	445	445		
42001300	PROTECTIVE COAT	SQ YD	445	445		
44000100	PAVEMENT REMOVAL	SQ YD	427	427		
44004400	PAVEMENT REMOVAL (SPECIAL)	SQ YD	108		45	63
44000500	COMBINATION CURB AND GUTTER REMOVAL	FOOT	25	25		
44001430	BITUMINOUS SHOULDER REMOVAL	SQ YD	977	977		
44002020	CONCRETE MEDIAN SURFACE REMOVAL	SQ FT	20	20		
44213200	SAW CUTS	FOOT	835		351	484
48101200	AGGREGATE SHOULDERS, TYPE B	TON	243	243		
48202880	BITUMINOUS SHOULDERS, SUPERPAVE 14"	SQ YD	815	815		
60608600	COMBINATION CONCRETE CURB AND GUTTER, TYPE M-6.06	FOOT	25	25		
67100100	MOBILIZATION	L SUM	1	0.4	0.3	0.3
70100450	TRAFFIC CONTROL & PROTECTION 701201	L SUM	1	1		
70100460	TRAFFIC CONTROL & PROTECTION 701306	L SUM	1	1		
70102635	TRAFFIC CONTROL & PROTECTION 701701	L SUM	1		0.5	0.5
* 78008210	POLYUREA PAVEMENT MARKING, TYPE I - LINE 4"	FOOT	501	501		
* 78008270	POLYUREA PAVEMENT MARKING, TYPE I - LINE 24"	FOOT	12		12	

\*SPECIALTY ITEMS

PLOT DATE = 7/7/2005  
 FILE NAME = c:\pwworkspace\98923\98923.dwg  
 PLOT SCALE = 1/8" = 1' IN.  
 USER NAME = mcdonald

F.A.P. RTE.	SECTION	COUNTY	TOTAL SHEETS	SHEET NO.
			12	4
STA. _____		TO STA. _____		
FED. ROAD DIST. NO. _____		ILLINOIS FED. AID PROJECT		

- VARIOUS
- 09 CONT MAINT FY 06-1
- VARIOUS

### PAVEMENT SCHEDULE

STATION (LOCATION)	PCC PAVEMENT 10"	SUBBASE GRAN MATL TY A 4"	PCC INLAY 3"	PAVT. REMOV. SPECIAL	PAVEMENT REMOVAL	SAW CUTS	PAVEMENT FABRIC	PROTECTIVE COAT	CORR MEDIAN REMOVAL	CONC MED SURF REM	COMB CURB & GUT REMOV	COMB CC&G TY M-6.06
	SQ YD	SQ YD	SQ YD	SQ YD	SQ YD	FOOT	SQ YD	SQ YD	SQ FT	SQ FT	FOOT	FOOT
<b>LOCATION 1</b>												
<b>ILL 142 (EQUALITY)</b>												
315+66.84 - 316+17	18	18					18	18	160			
315+66.84 - 315+77										20	25	25
Rt. 315+66.84 - Rt. 316+85	223	243			223		223	223				
Lt. 315+66.84 - Lt. 316+85	204	224			204		204	204				
<b>LOCATION 3</b>												
<b>ILL 13/US 45 (HARRISBURG)</b>												
Lt. 1076+09 (IL 13)			10.0	10.0		87						
1075+65 (IL 13)			27.0	27.0		198						
Lt. 29+60 (US 45)			8.0	8.0		66						
<b>LOCATION 2</b>												
<b>ILL 146/MAIN ST. (ANNA)</b>												
Rt. 128+88			10.0	10.0		81						
Lt. 1073+10			11.0	11.0		97						
Lt. 1074+12			12.0	12.0		93						
Rt. 1074+50			30.0	30.0		213						
<b>TOTAL</b>	<b>445</b>	<b>485</b>	<b>108</b>	<b>108</b>	<b>427</b>	<b>835</b>	<b>445</b>	<b>445</b>	<b>160</b>	<b>20</b>	<b>25</b>	<b>25</b>

### PAVEMENT MARKING SCHEDULE

STATION TO STATION	POLYUREA PAVEMENT MARKING			NOTES
	LINE - 24 INCH	LINE - 4 INCH		
	SOLID YELLOW FT	SOLID WHITE FT	SOLID YELLOW FT	
<b>ILL 142 (EQUALITY)</b>				
Lt. 315+66 - 316+85		119	238	Edge lines
Rt. 315+66 - 316+85		119		Edge lines
Lt. & Rt. 315+66 - 316+85			25	Top of Curb
<b>ILL 13/US 45 (HARRISBURG)</b>				
Lt. 1076+09 (IL 13)	12			Stop Bar
<b>Sub-Totals</b>	<b>12</b>	<b>238</b>	<b>263</b>	
<b>TOTAL</b>	<b>12</b>	<b>501</b>		

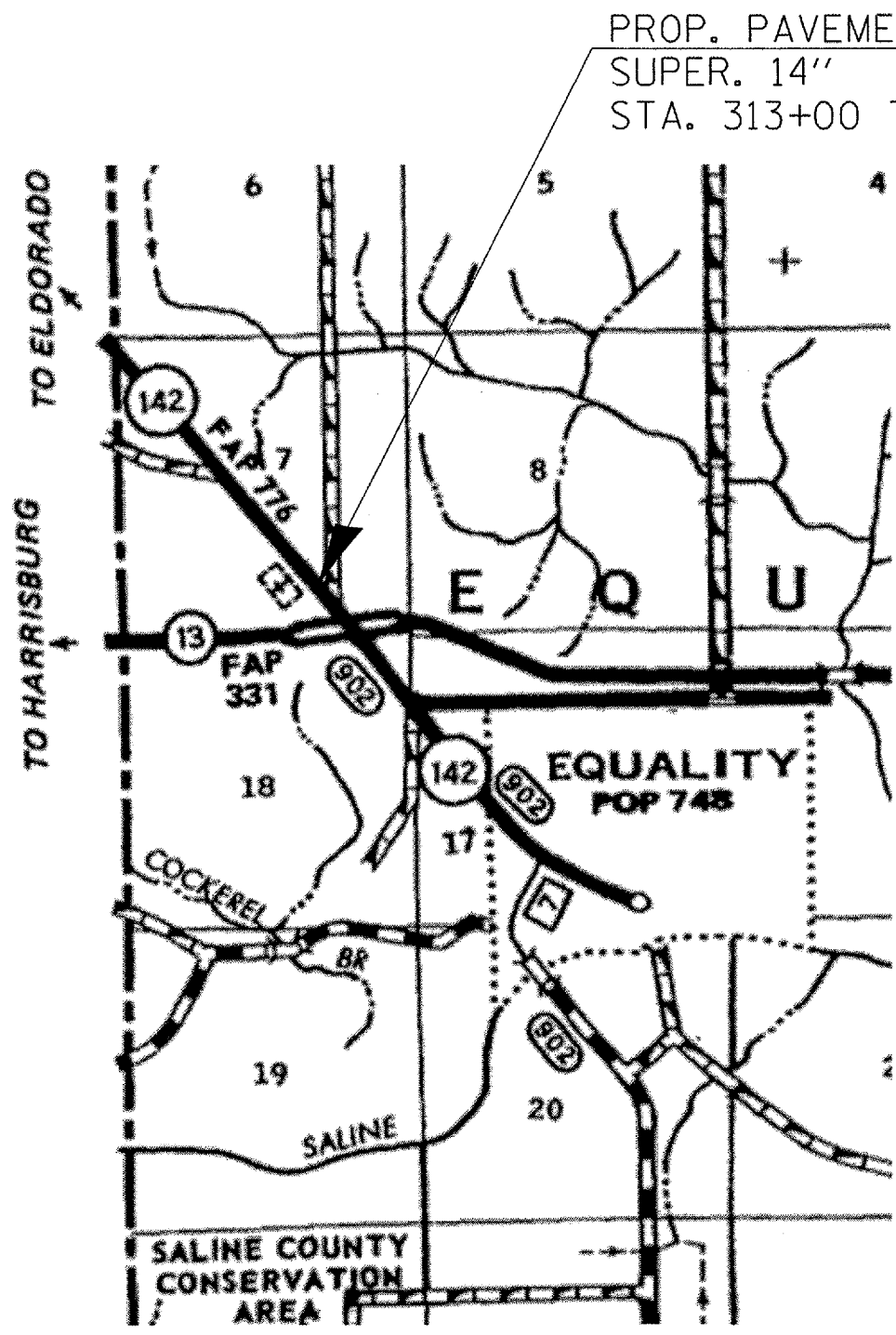
PLOT DATE = 7/7/2005  
 FILE NAME = c:\p\projects\982785\p82785.dwg  
 PLOT SCALE = 1/8"=1'-0"  
 USER NAME = recorder

F.A.B. RTE.	SECTION	COUNTY	TOTAL SHEETS	SHEET NO.
...	...	...	12	5
STA. ... TO STA. ...		FED. ROAD DIST. NO. ... ILLINOIS ... FED. AID PROJECT		

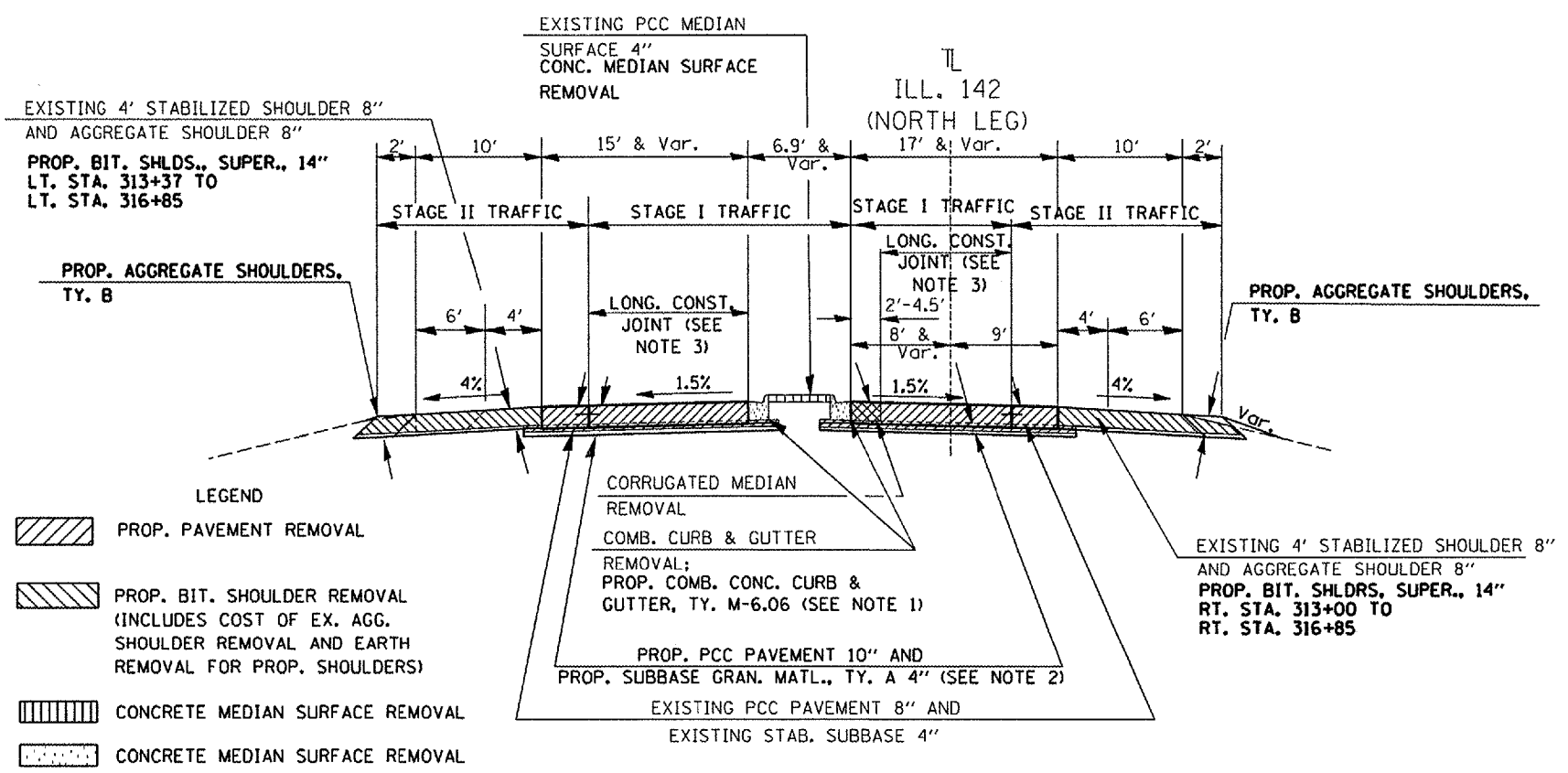
•VARIOUS  
 ••D9 CONT MAINT FY 06-1  
 •••VARIOUS

LOCATION 1 MAP  
 ILL. 142 AT ILL. 13 NEAR EQUALITY

LOCATION 1 TYPICAL  
 ILL. 142 (NORTH LEG)



PROP. PAVEMENT 10" AND BIT. SHLDRS.  
 SUPER. 14"  
 STA. 313+00 TO STA. 316+85 (ILL. 142)



- LEGEND
- PROP. PAVEMENT REMOVAL
  - PROP. BIT. SHOULDER REMOVAL (INCLUDES COST OF EX. AGG. SHOULDER REMOVAL AND EARTH REMOVAL FOR PROP. SHOULDER)
  - CONCRETE MEDIAN SURFACE REMOVAL
  - CONCRETE MEDIAN SURFACE REMOVAL

- NOTES
1. CONSTRUCT TAPERED MEDIAN NOSE ACCORDING TO STANDARD 606301-02, SECTION F-F, EXCEPT USE A 10' TAPER INSTEAD OF 6'.
  2. PROP. SUBBASE UNDER PCC PAVEMENT WILL ALSO EXTEND UNDER NEW CURB AND GUTTER AND INTO BITUMINOUS SHOULDERS BY 1'-6" AS SHOWN IN TYPICAL. ALL EARTHWORK SHALL BE INCLUDED IN COST OF NEW SUBBASE.
  3. A LONGITUDINAL CONSTRUCTION JOINT SHALL BE CONSTRUCTED 12' FROM MEDIAN EDGE OF PAVEMENT. SEE STD.'S 420001-05 AND 420601-03 FOR JOINT AND PAVEMENT REQUIREMENTS.
  4. NO NIGHTTIME LANE CLOSURES.

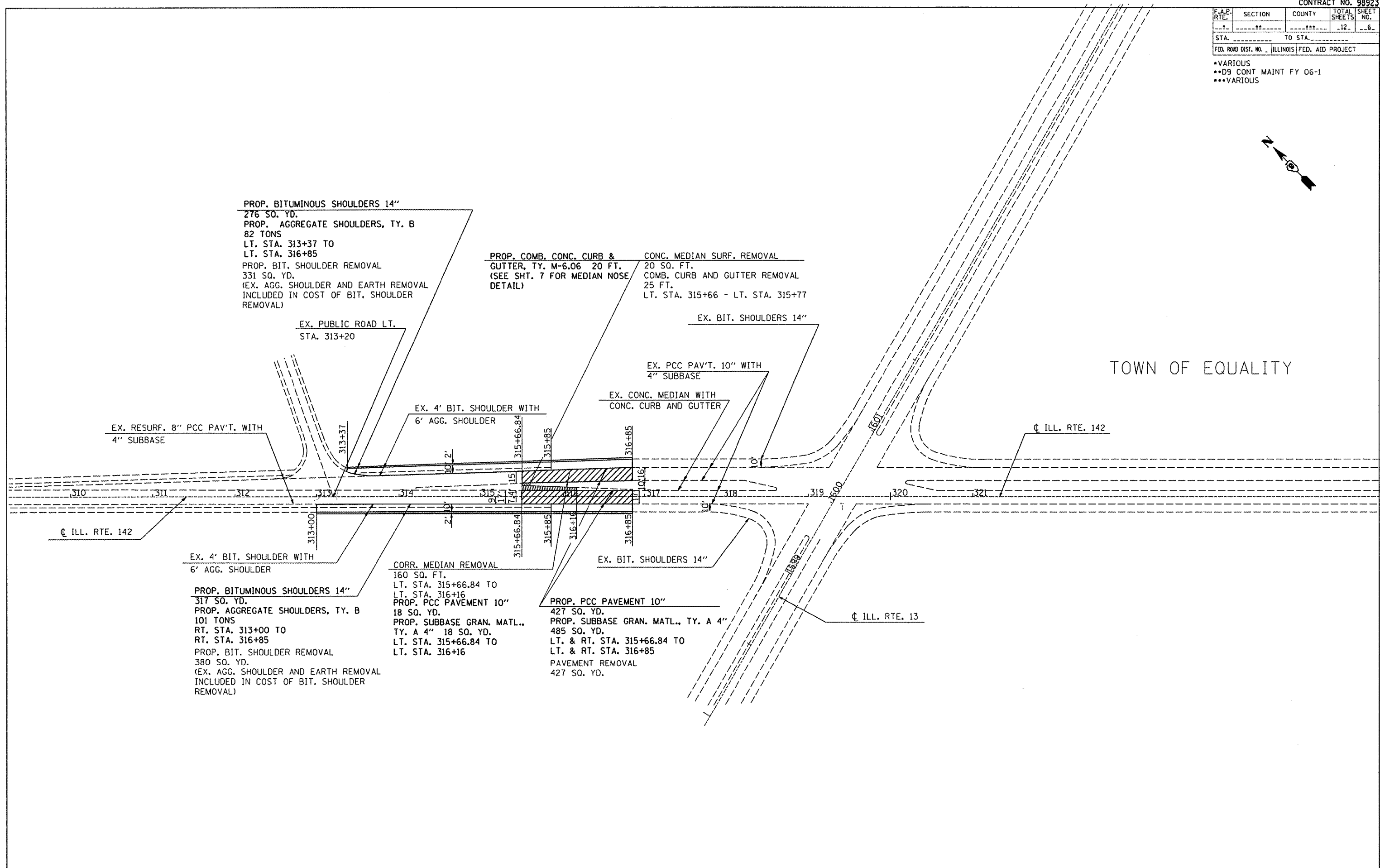
TO BE USED:  
 STA 315+66.84 TO STA 316+85.00

- STAGE I TRAFFIC:  
 PAVEMENT AND SHOULDER REMOVAL  
 PROP. BITUMINOUS AND AGGREGATE SHOULDERS  
 PROP. PCC PAVEMENT 10" AND SUBBASE
- STAGE II TRAFFIC:  
 PAVEMENT REMOVAL  
 CONCRETE MEDIAN REMOVAL  
 COMB. CURB AND GUTTER REMOVAL  
 CORRUGATED MEDIAN REMOVAL  
 PROP. PCC PAVEMENT 10" AND SUBBASE  
 PROP. COMB. CONC. CURB AND GUTTER

PLOT DATE = 7/7/2005  
 FILE NAME = G:\Projects\1102705\1102705pl.mxd  
 USER NAME = mcdonald

F.A.E. RTE.	SECTION	COUNTY	TOTAL SHEETS	SHEET NO.
...	...	...	12	6
STA. ....		TO STA. ....		
FED. ROAD DIST. NO. ...		ILLINOIS FED. AID PROJECT		

- VARIOUS
- D9 CONT MAINT FY 06-1
- VARIOUS



PROP. BITUMINOUS SHOULDERS 14"  
 276 SQ. YD.  
 PROP. AGGREGATE SHOULDERS, TY. B  
 82 TONS  
 LT. STA. 313+37 TO  
 LT. STA. 316+85  
 PROP. BIT. SHOULDER REMOVAL  
 331 SQ. YD.  
 (EX. AGG. SHOULDER AND EARTH REMOVAL  
 INCLUDED IN COST OF BIT. SHOULDER  
 REMOVAL)

PROP. COMB. CONC. CURB &  
 GUTTER, TY. M-6.06 20 FT.  
 (SEE SHT. 7 FOR MEDIAN NOSE  
 DETAIL)

CONC. MEDIAN SURF. REMOVAL  
 20 SQ. FT.  
 COMB. CURB AND GUTTER REMOVAL  
 25 FT.  
 LT. STA. 315+66 - LT. STA. 315+77

EX. PUBLIC ROAD LT.  
 STA. 313+20

EX. BIT. SHOULDERS 14"

EX. PCC PAV'T. 10" WITH  
 4" SUBBASE

TOWN OF EQUALITY

EX. CONC. MEDIAN WITH  
 CONC. CURB AND GUTTER

EX. RESURF. 8" PCC PAV'T. WITH  
 4" SUBBASE

EX. 4' BIT. SHOULDER WITH  
 6" AGG. SHOULDER

ILL. RTE. 142

EX. 4' BIT. SHOULDER WITH  
 6" AGG. SHOULDER

CORR. MEDIAN REMOVAL  
 160 SQ. FT.  
 LT. STA. 315+66.84 TO  
 LT. STA. 316+16

EX. BIT. SHOULDERS 14"

PROP. BITUMINOUS SHOULDERS 14"  
 317 SQ. YD.  
 PROP. AGGREGATE SHOULDERS, TY. B  
 101 TONS  
 RT. STA. 313+00 TO  
 RT. STA. 316+85  
 PROP. BIT. SHOULDER REMOVAL  
 380 SQ. YD.  
 (EX. AGG. SHOULDER AND EARTH REMOVAL  
 INCLUDED IN COST OF BIT. SHOULDER  
 REMOVAL)

PROP. PCC PAVEMENT 10"  
 18 SQ. YD.  
 PROP. SUBBASE GRAN. MATL.,  
 TY. A 4" 18 SQ. YD.  
 LT. STA. 315+66.84 TO  
 LT. STA. 316+16

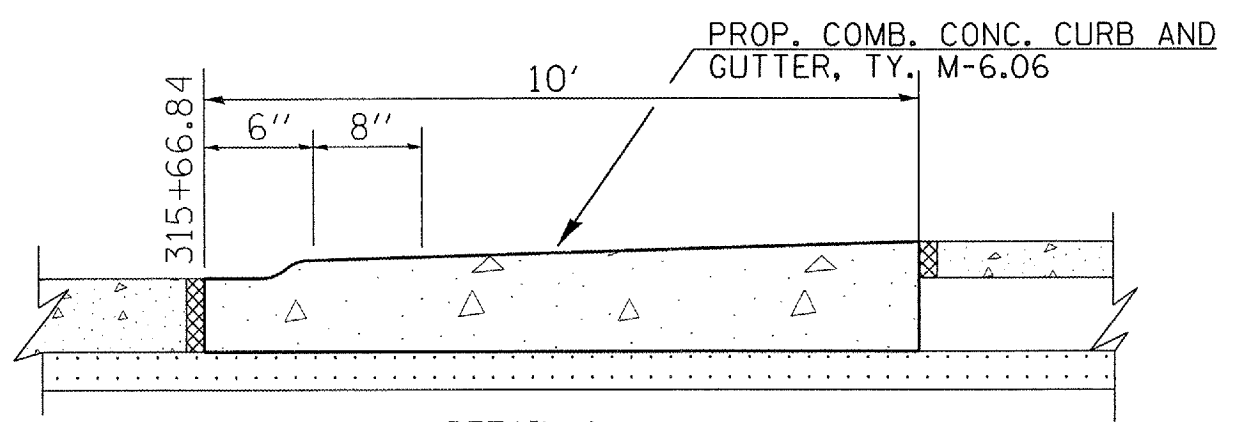
PROP. PCC PAVEMENT 10"  
 427 SQ. YD.  
 PROP. SUBBASE GRAN. MATL., TY. A 4"  
 485 SQ. YD.  
 LT. & RT. STA. 315+66.84 TO  
 LT. & RT. STA. 316+85  
 PAVEMENT REMOVAL  
 427 SQ. YD.

ILL. RTE. 13

PLOT DATE : 7/7/2005  
 FILE NAME : c:\projects\982785\982785.plt=32  
 PLOT SCALE : 1/8"=1'-0" / IN.  
 USER NAME : mccordr

F.A.P. RTE.	SECTION	COUNTY	TOTAL SHEETS	SHEET NO.
...	...	...	12	7
STA. ....		TO STA. ....		
FED. ROAD DIST. NO. ...		ILLINOIS FED. AID PROJECT		

- VARIOUS
- D9 CONT MAINT FY 06-1
- VARIOUS

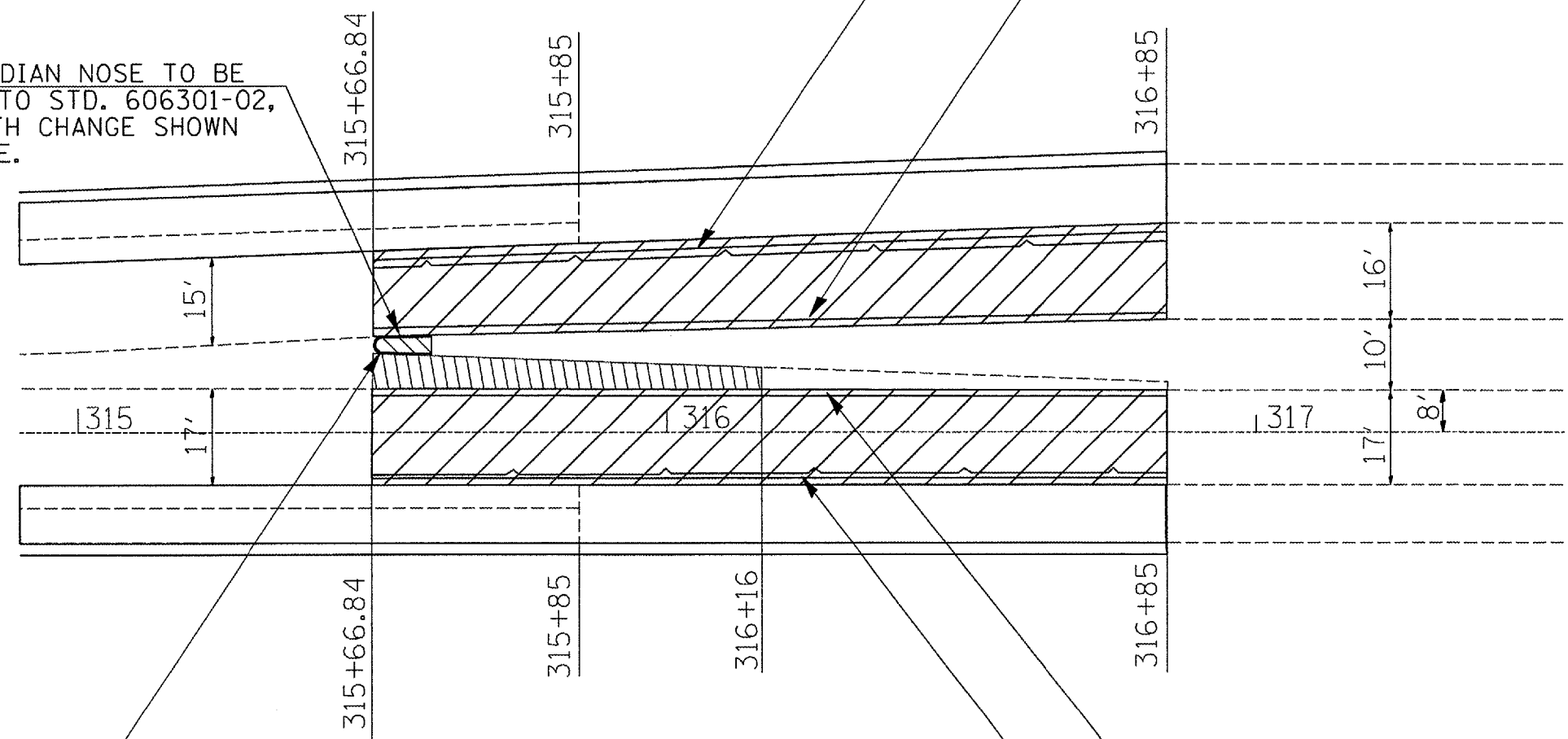


DETAIL A  
TAPERED MEDIAN NOSE

PROP. POLYUREA PAVEMENT MARKING, TYPE I  
LINE 4" (SOLID WHITE) 119 FT.  
LT. STA. 315+66.84 - LT. STA. 316+85

PROP. POLYUREA PAVEMENT MARKING, TYPE I  
LINE 4" (SOLID YELLOW) 119 FT.  
LT. STA. 315+66.84 - LT. STA. 316+85

PROP. TAPERED MEDIAN NOSE TO BE  
BUILT ACCORDING TO STD. 606301-02,  
EXCEPT FOR LENGTH CHANGE SHOWN  
IN DETAIL A ABOVE.



PROP. POLYUREA PAVEMENT MARKING, TYPE I  
LINE 4" (SOLID YELLOW) 25 FT.  
LT. STA. 315+66.84 - LT. STA. 315+77

PROP. POLYUREA PAVEMENT MARKING, TYPE I  
LINE 4" (SOLID YELLOW) 119 FT.  
LT. STA. 315+66.84 - LT. STA. 316+85

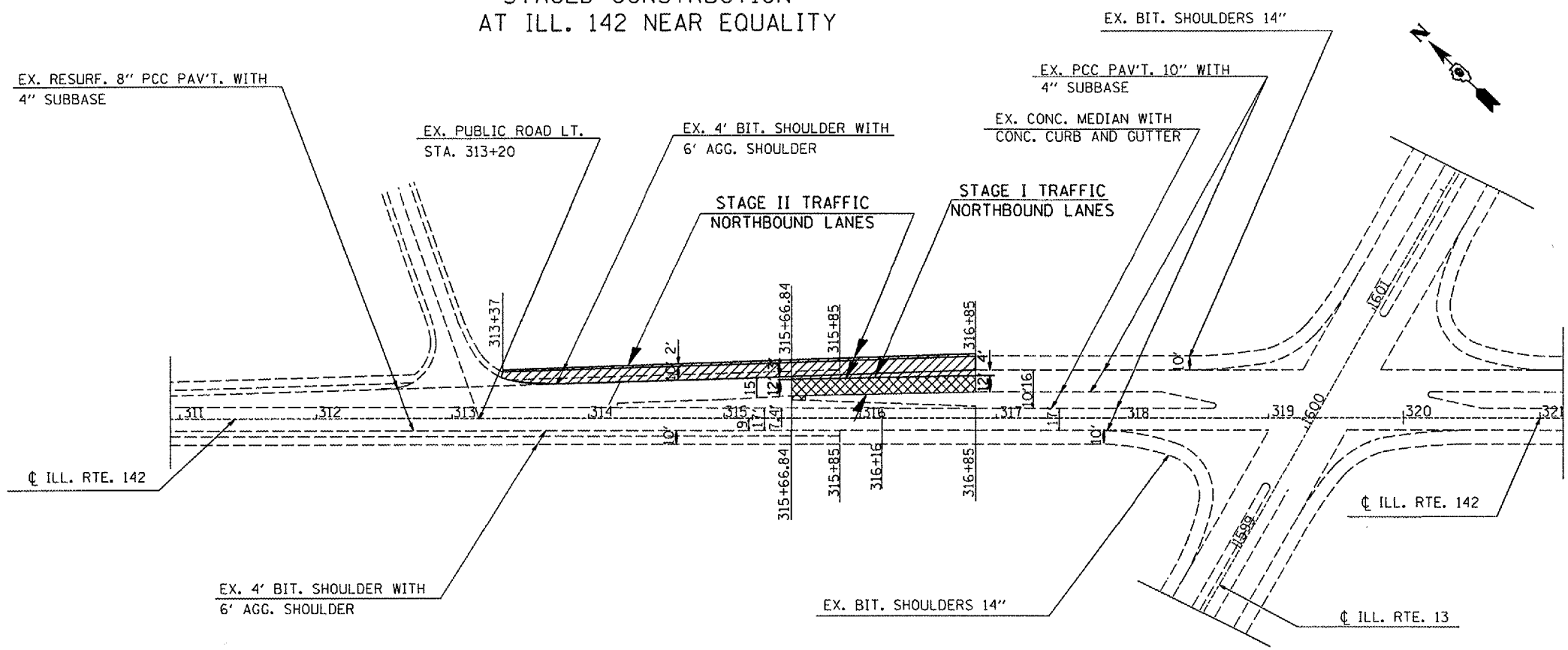
PROP. POLYUREA PAVEMENT MARKING, TYPE I  
LINE 4" (SOLID WHITE) 119 FT.  
RT. STA. 315+66.84 - RT. STA. 316+85

PLOT DATE = 7/7/2005  
FILE NAME = c:\p\proj\11\982785\982785pl1.dwg  
PLOT SCALE = 1/8" = 1'-0"  
USER NAME = mcorde

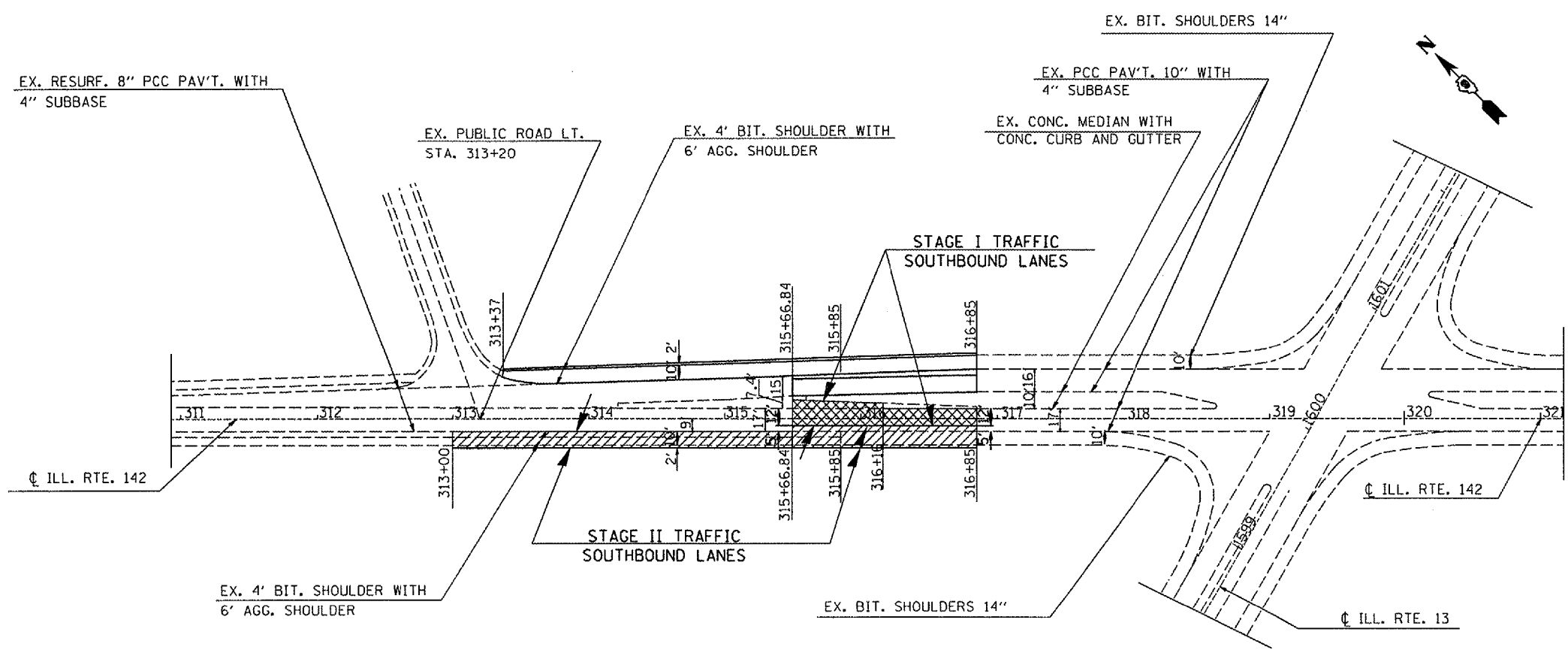
F.A.P. RTE.	SECTION	COUNTY	TOTAL SHEETS	SHEET NO.
*	**	***	12	8
STA.		TO STA.		
FED. ROAD DIST. NO.		ILLINOIS FED. AID PROJECT		

- VARIOUS
- D9 CONT MAINT FY 06-1
- VARIOUS

### STAGED CONSTRUCTION AT ILL. 142 NEAR EQUALITY



- STAGE 1 - NORTHBOUND EXISTING BITUMINOUS SHOULDERS SHALL BE REMOVED AND REPLACED. PORTION OF EXISTING 8" PCC PAVEMENT AND SUBBASE SHALL ALSO BE REMOVED AND REPLACE.
- STAGE 2 - NORTHBOUND EXISTING PAVEMENT SHALL BE REMOVED AND REPLACED FROM EDGE OF MEDIAN GUTTER TO 12' LONGITUDINAL JOINT. NEW PCC PAVEMENT SHALL MEET REQUIREMENTS IN ART. 701.05 (c)(6) IN THE STANDARD SPEC. FOR BRIDGE AND ROAD CONSTRUCTION BEFORE TRAFFIC WILL BE ALLOWED ON IT. NO NIGHTTIME CLOSINGS WILL BE ALLOWED. EXISTING MEDIAN CURB AND GUTTER AND MEDIAN SURFACE SHALL BE REMOVED AND REPLACED.



- STAGE 1 - SOUTHBOUND EXISTING BITUMINOUS SHOULDERS SHALL BE REMOVED AND REPLACED. PORTION OF EXISTING 8" PCC PAVEMENT AND SUBBASE SHALL ALSO BE REMOVED AND REPLACE.
- STAGE 2 - SOUTHBOUND EXISTING PAVEMENT SHALL BE REMOVED AND REPLACED FROM EDGE OF MEDIAN GUTTER TO 12' LONGITUDINAL JOINT. NEW PCC PAVEMENT SHALL MEET REQUIREMENTS IN ART. 701.05 (c)(6) IN THE STANDARD SPEC. FOR BRIDGE AND ROAD CONSTRUCTION BEFORE TRAFFIC WILL BE ALLOWED ON IT. NO NIGHTTIME CLOSINGS WILL BE ALLOWED. EXISTING CONCRETE CORRIGATED MEDIAN SHALL BE REMOVED AND REPLACED WITH NEW PCC PAVEMENT 10" AND SUBBASE.

PLOT DATE = 7/7/2005  
 FILE NAME = c:\projects\98923\98923.dwg  
 SCALE = 1/4" = 1'-0"  
 USER NAME = mcdonald

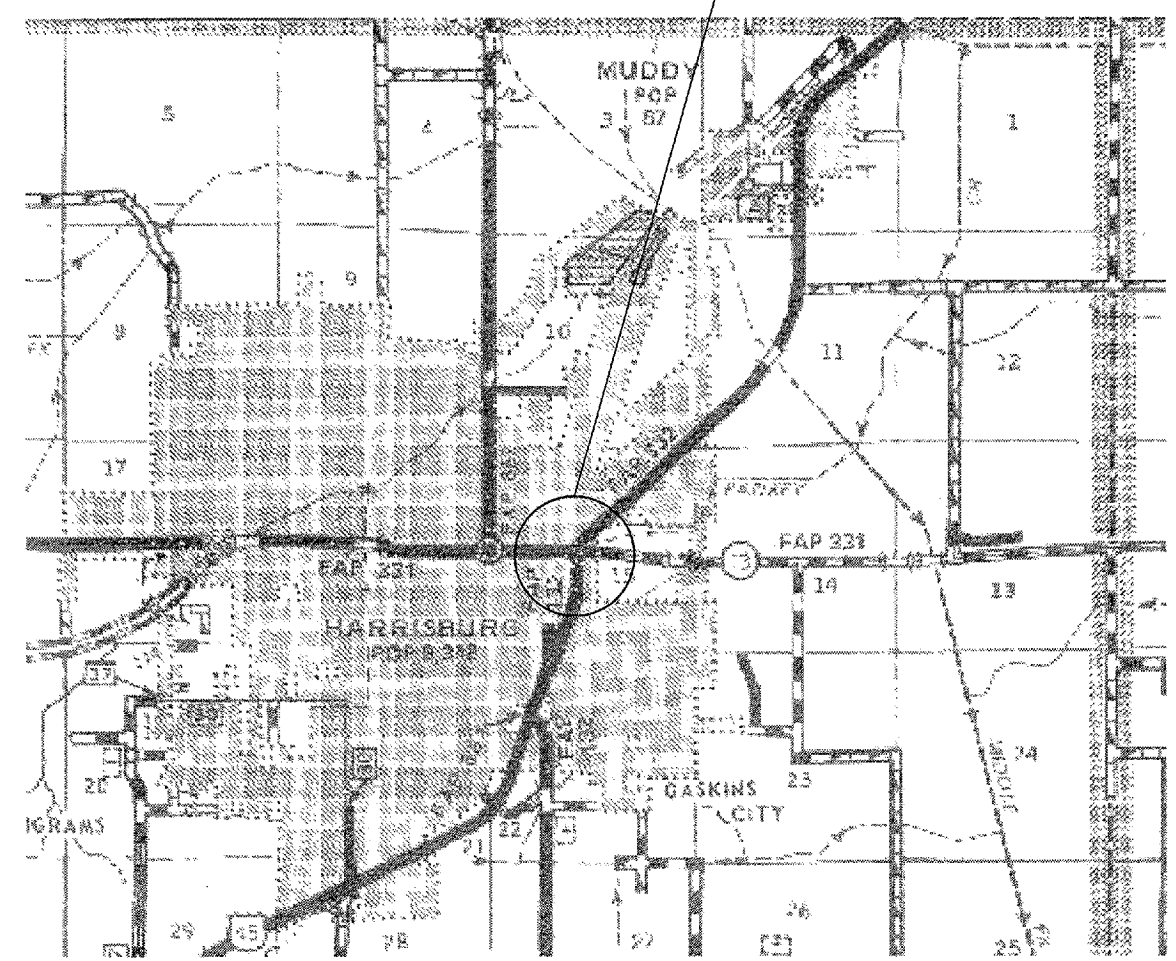


F.A.P. RTE.	SECTION	COUNTY	TOTAL SHEETS	SHEET NO.
..	..	..	..	..
..	..	..	12	9
STA. _____ TO STA. _____				
FED. ROAD DIST. NO. _____		ILLINOIS FED. AID PROJECT		

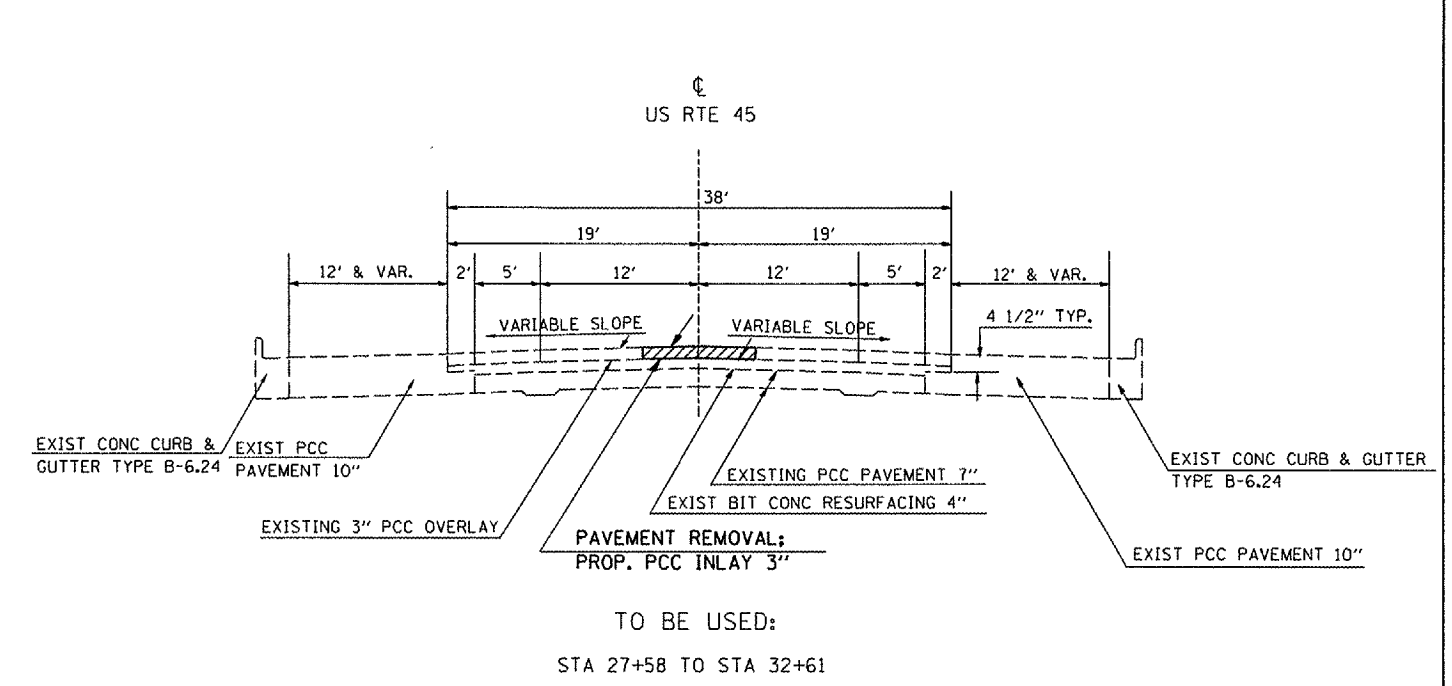
- VARIOUS
- D9 CONT MAINT FY 06-1
- VARIOUS

LOCATION 2 MAP  
ILL. 13 AND U.S. 45 IN HARRISBURG

PROP. PCC INLAY 3" AT THE INTERSECTION OF ILL. 13 AND US 45)



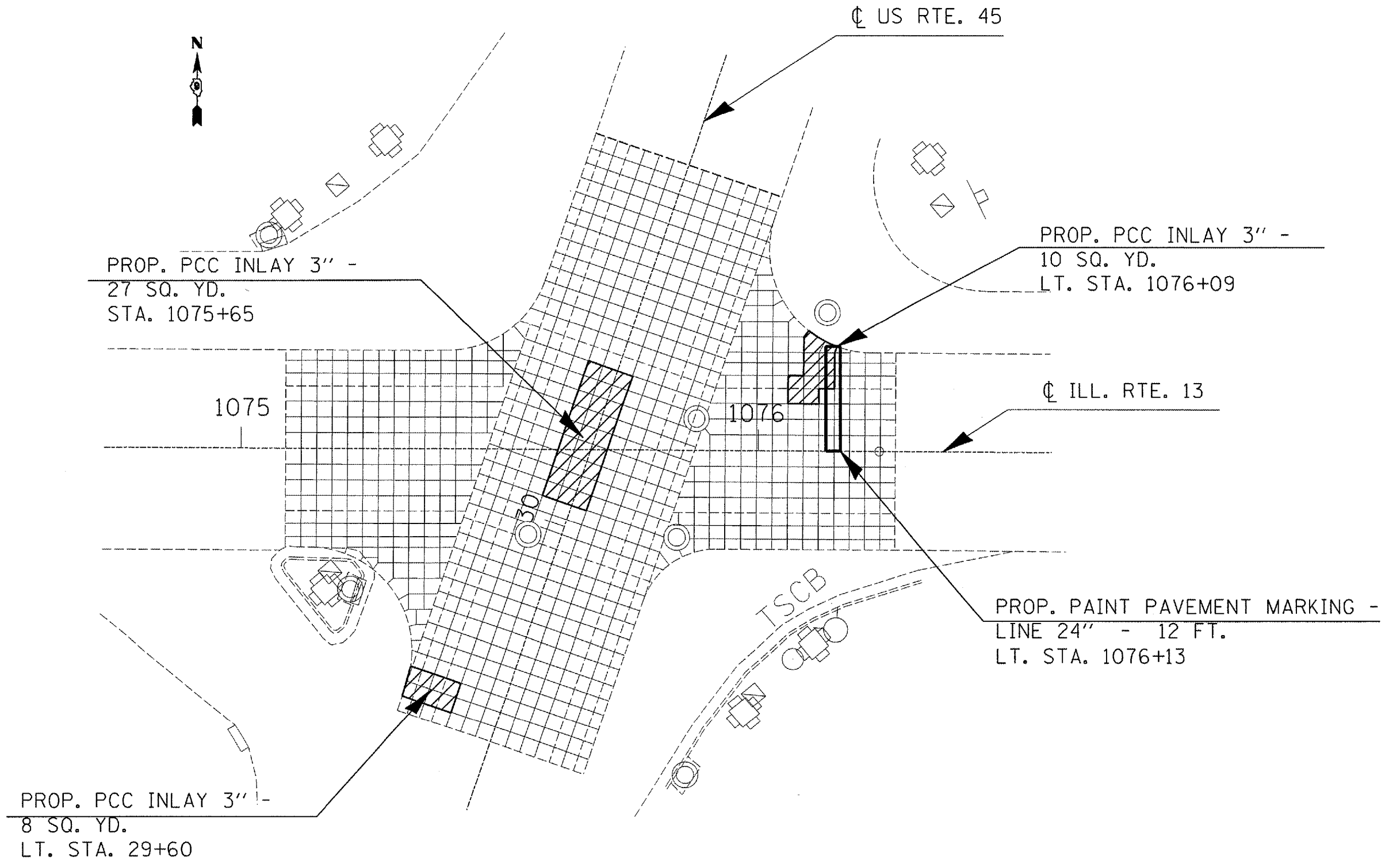
LOCATION 2 TYPICAL  
ILL. 13 AND U.S. 45 IN HARRISBURG



PLOT DATE = 7/7/2005  
FILE NAME = c:\p06\gen\98923\98923.dwg  
USER NAME = mscourch

F.A.R. RTE.	SECTION	COUNTY	TOTAL SHEETS	SHEET NO.
---	---	---	12	10
FED. ROAD DIST. NO. ILLINOIS		FED. AID PROJECT		
STA. -----		TO STA. -----		
• VARIOUS ROUTES				C.N. 98923
•• D9 CONT. MAINT. FY06-1				

## DETAIL OF LOCATION 2 ILL. 13 AND U.S. 45 IN HARRISBURG



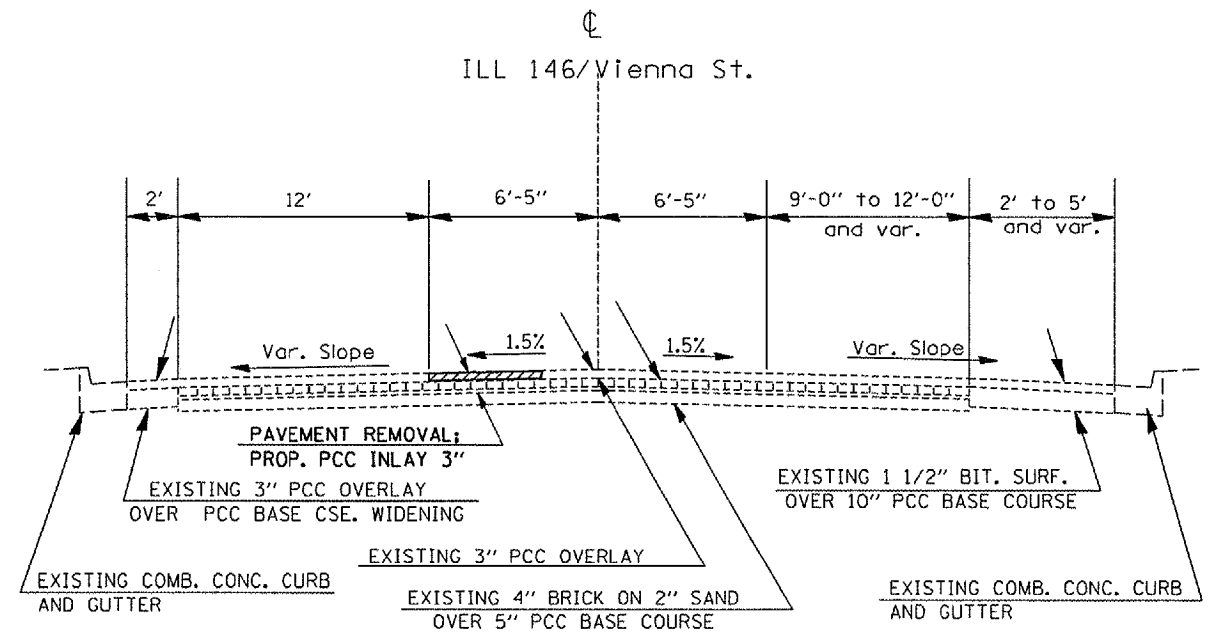
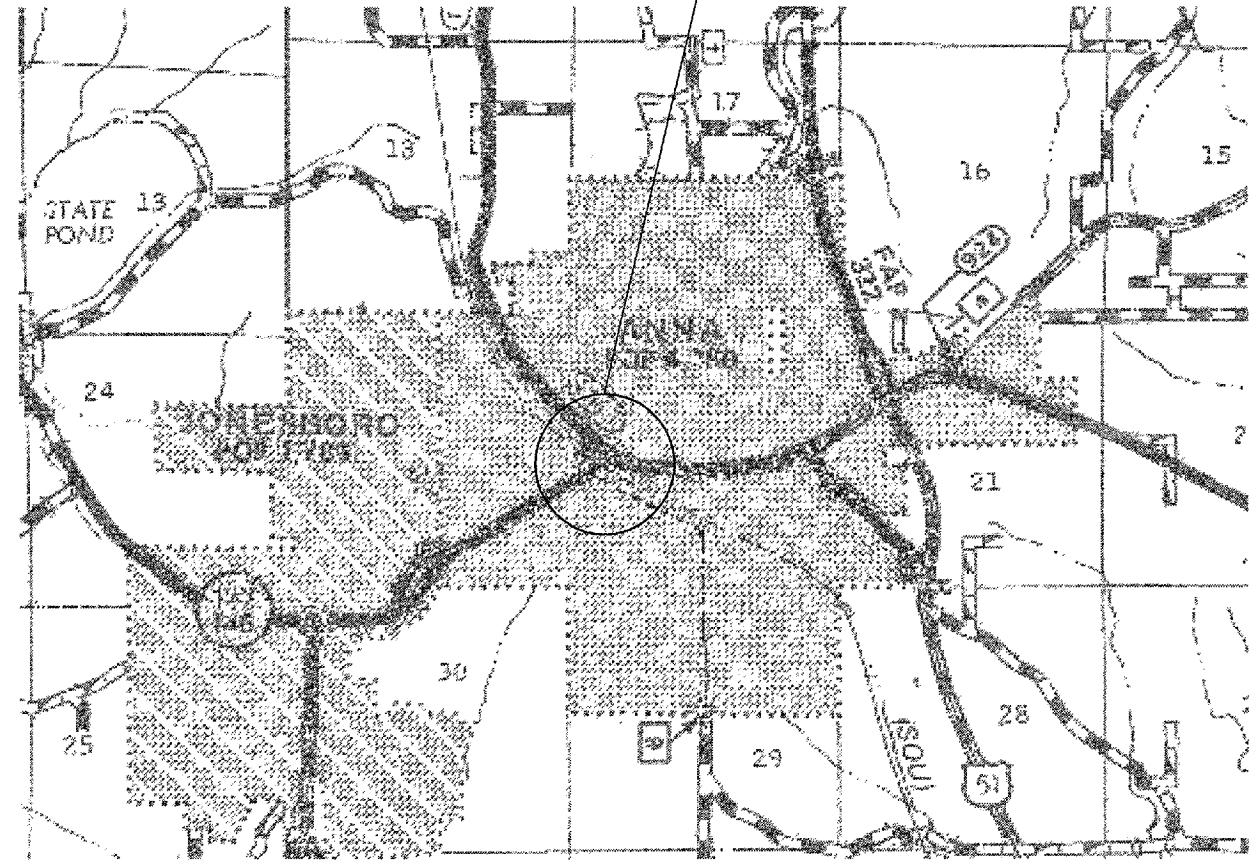
F.A.P. RTE.	SECTION	COUNTY	TOTAL SHEETS	SHEET NO.
...	...	...	12	11
STA. ....		TO STA. ....		
FED. ROAD DIST. NO. ...		ILLINOIS FED. AID PROJECT		

- \*VARIOUS
- \*\*D9 CONT MAINT FY 06-1
- \*\*\*VARIOUS

LOCATION 3 MAP  
ILL. 146 AND MAIN ST. IN ANNA

PROP. PCC INLAY 3" AT THE  
INTERSECTION OF ILL. 146 AND  
MAIN ST.)

LOCATION 3 TYPICAL  
ILL. 146 AND MAIN ST. IN ANNA



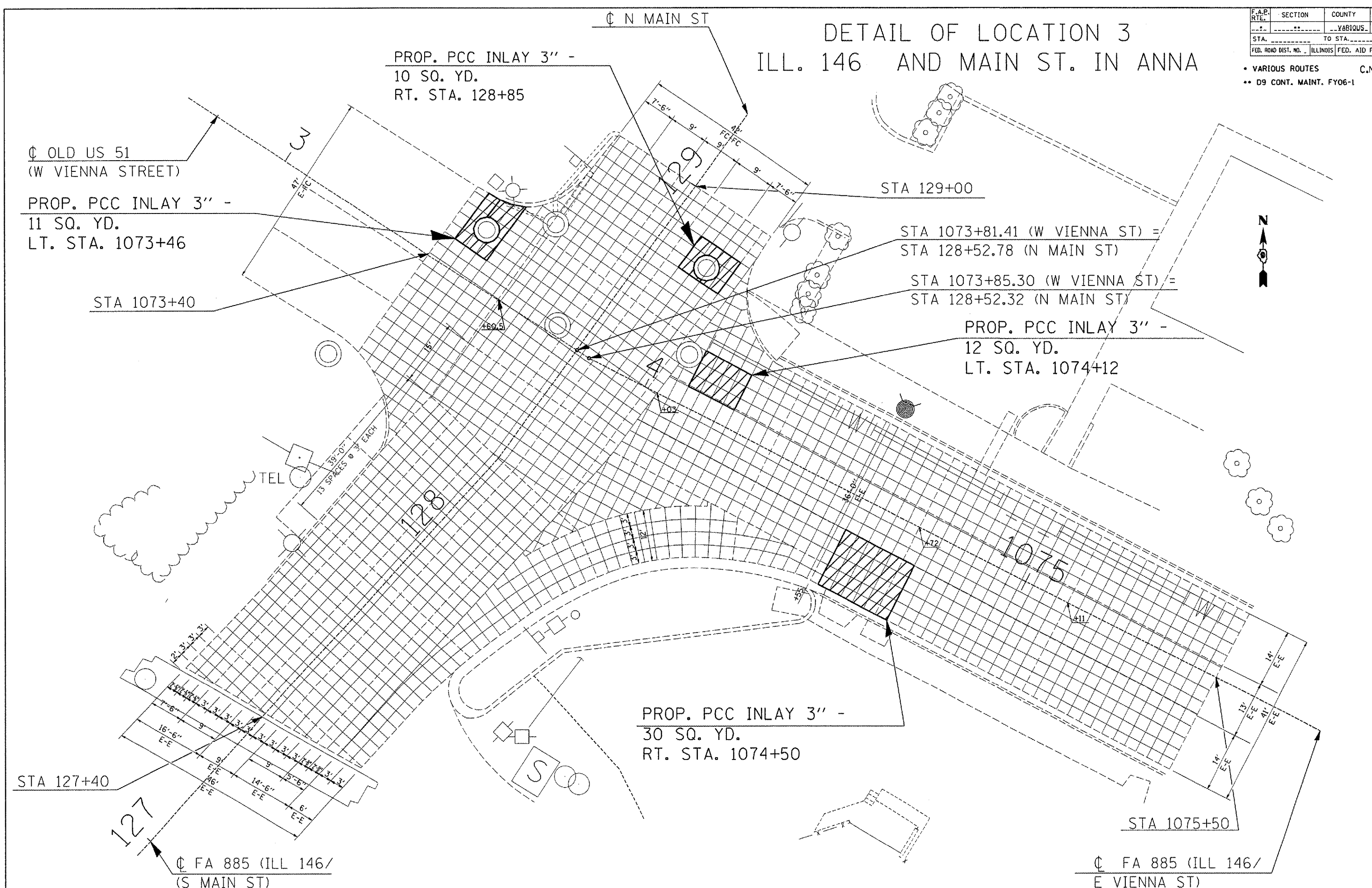
TO BE USED:  
STA 1074+03 TO STA 1075+50  
(EAST LEG OF INTERSECTION)

PLOT DATE = 7/7/2005  
FILE NAME = c:\puro\mcs\p102705\1002705.plt  
PLOT SCALE = 1/8" = 1'-0"  
USER NAME = mcarder

F.A.P. RTE.	SECTION	COUNTY	TOTAL SHEETS	SHEET NO.
...	...	YABIOUS	..12	..12.
STA. ....		TO STA. ....		
FED. ROAD DIST. NO.	ILLINOIS	FED. AID PROJECT		

• VARIOUS ROUTES C.N. 98923  
 •• D9 CONT. MAINT. FY06-1

# DETAIL OF LOCATION 3 ILL. 146 AND MAIN ST. IN ANNA



INTERSECTON DETAIL - ILL. 146 AND MAIN ST