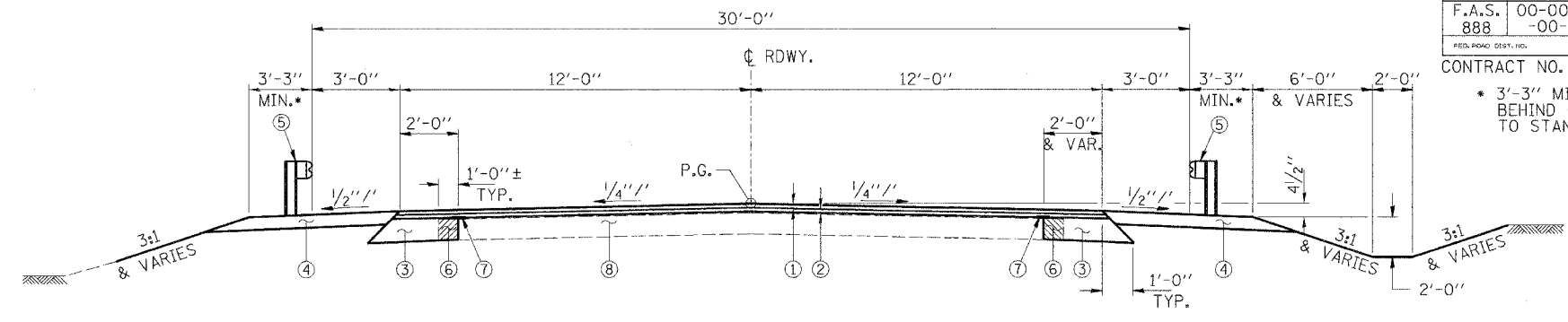


ROUTE NO.	SECTION	COUNTY	SHEET	SHEET
F.A.S. 888	00-00065 -00-BR	GALLATIN	22	3
FED. ROAD DIST. NO.	ILLINOIS	FED. AID PROJECT		

CONTRACT NO. 99232
 * 3'-3" MINIMUM & VARIES 4'-0"
 BEHIND GUARDRAIL ACCORDING
 TO STANDARD 630301 & 630001.

- LEGEND**
- ① BITUMINOUS CONCRETE, SURFACE COURSE, SUPERPAVE, (1 1/2" MIN.)
 - ② BITUMINOUS CONCRETE, SURFACE COURSE, SUPERPAVE, (VARIABLE DEPTH)
 - ③ AGGREGATE BASE COURSE WIDENING, 12"
 - ④ AGGREGATE SHOULDERS, TYPE B, 6"
 - ⑤ STEEL PLATE BEAM GUARD RAIL
 - ⑥ PAVEMENT REMOVAL
 - ⑦ STRIP REFLECTIVE CRACK CONTROL TREATMENT
 - ⑧ EXISTING BITUMINOUS PAVEMENT ON AGGREGATE BASE
 - ⑨ BITUMINOUS SURFACE REMOVAL - BUTT JOINT
 - ⑩ TEMPORARY RAMP AT 1:40 (SEE ARTICLE 406.18)
 - ⑪ BRIDGE APPROACH PAVEMENT
 - ⑫ SEE STANDARD 420401 FOR SUB-BASE GRANULAR MATERIAL INCLUDED IN COST OF BRIDGE APPROACH PAVEMENT

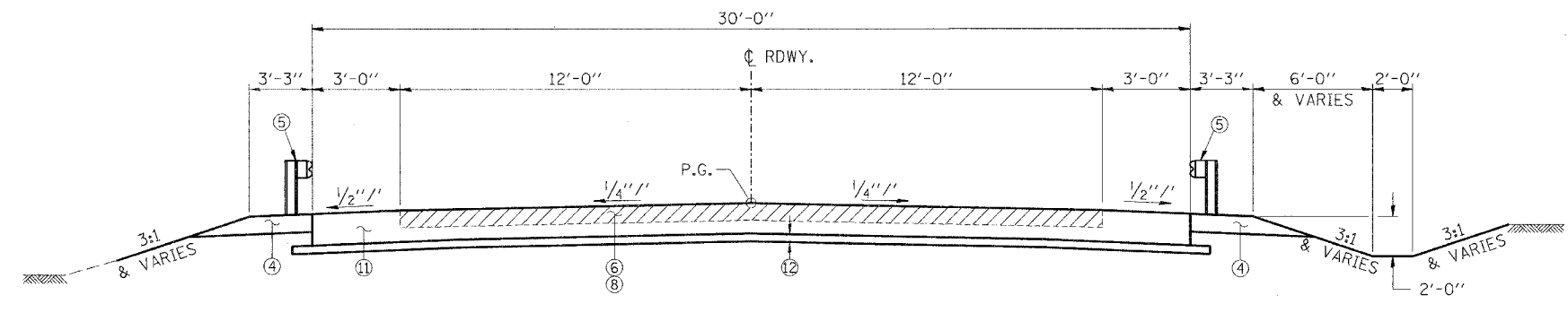


TYPICAL CROSS SECTION
 SUGGESTED FILL SECTION CONSTRUCT AS SHOWN IN STATION CROSS SECTIONS
 STA. 6+20 TO STA. 7+58.83 & STA. 12+41.17 TO STA. 13+50
 SUGGESTED CUT SECTION CONSTRUCT AS SHOWN IN STATION CROSS SECTIONS

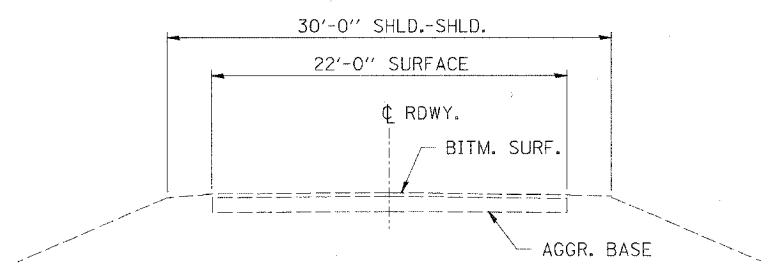
TRANSITION FROM PROPOSED ROADWAY TO THE EXISTING ROADWAY IS TO BE CONSTRUCTED FROM STA. 5+70 TO STA. 6+20 AND FROM STA. 13+50 TO STA. 14+00.

NOTES

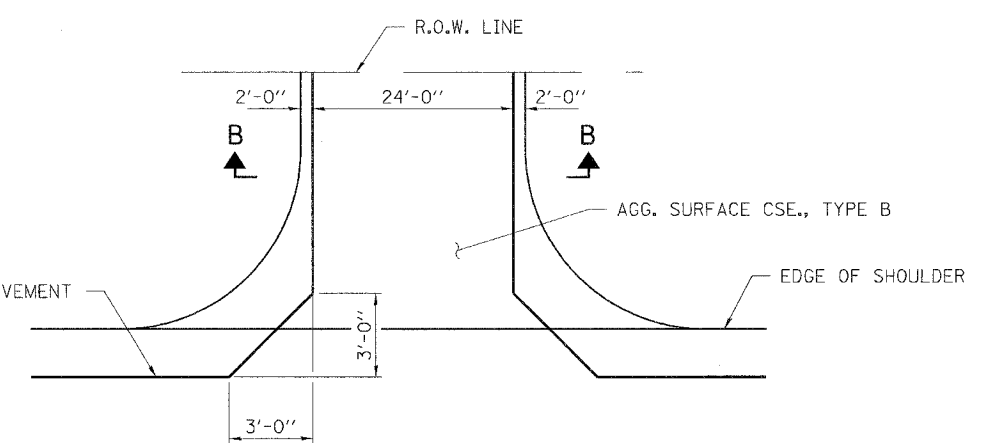
THE CONTRACTOR SHALL SAW CUT THE EXISTING PAVEMENT PRIOR TO PAVEMENT REMOVAL FOR THE BASE COURSE WIDENING. THE COST OF SAWCUTTING SHALL BE INCLUDED IN PAVEMENT REMOVAL.
 THE CONTRACTOR SHALL SAW CUT THE EXISTING SURFACE PRIOR TO BITUMINOUS SURFACE REMOVAL FOR PAVEMENT TRANSITION CONSTRUCTION. THE COST OF SAWCUTTING SHALL BE INCLUDED IN BITUMINOUS SURFACE REMOVAL - BUTT JOINT.



TYPICAL CROSS SECTION
 SUGGESTED FILL SECTION CONSTRUCT AS SHOWN IN STATION CROSS SECTIONS
 STA. 7+58.83 TO STA. 7+88.83 & STA. 12+11.17 TO STA. 12+41.17
 SUGGESTED CUT SECTION CONSTRUCT AS SHOWN IN STATION CROSS SECTIONS

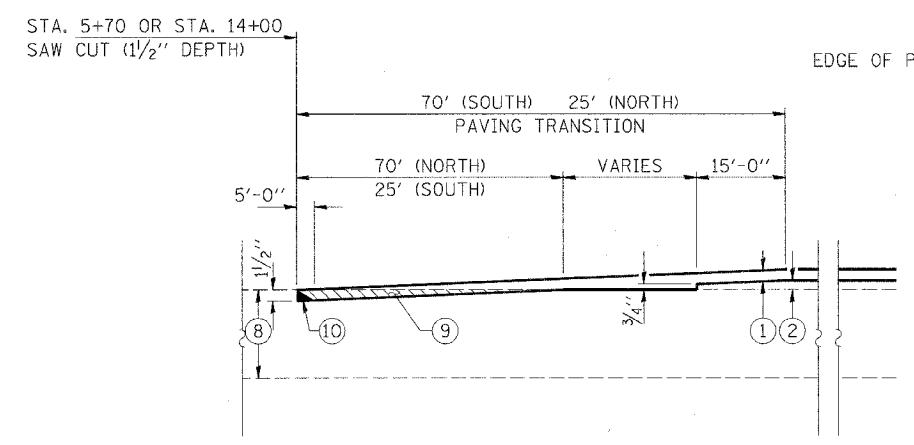


EXISTING CROSS SECTION

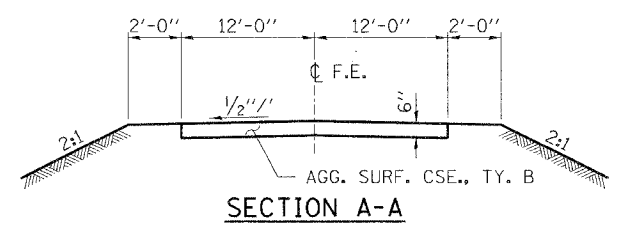


FIELD ENTRANCE DETAIL

MIXTURE REQUIREMENTS	
LOCATION(S):	SURFACE COURSE
MIXTURE USE(S):	BITUMINOUS CONCRETE SURFACE COURSE, SUPERPAVE, MIX C, N70
AC/PG:	PG 64-22
RAP % (MAX):	10
DESIGN AIR VOIDS:	4.0%, 70 GYRATION SUPERPAVE DESIGN
MIXTURE COMPOSITION: (GRADATION MIXTURE):	IL-9.5 mm OR IL-12.5 mm
FRICITION AGGREGATE:	C SURFACE



PAVEMENT TRANSITION DETAIL



HLR
 Rice, Berry and Associates
 A Division of Hampton, Lenzini and Renwick, Inc.
 Civil & Structural Engineers
 801 S. Durkin Drive
 Springfield, Illinois 62704
 217-546-3400
 P.O. Box 1036
 DuQuoin, Illinois 62832
 618-790-4637
 Account Number 12-38-0003-1
 Date: 05/26/05
 DESIGNED: T.P.L. CHECKED: S.W.M. DRAWN: D.B.

TYPICAL CROSS SECTIONS
 SECTION 00-00065-00-BR
 F.A.S. 888 / C.H. 11
 GALLATIN COUNTY