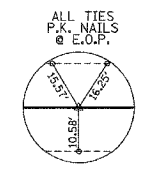


FAS	SECTION	COUNTY	TOTAL SHEETS	SHEET NO.
888 00-00065-00-BF		GALLATIN	22	4
STA. 5+00		TO STA. 15+00		
FED. ROAD DIST. NO.		ILLINOIS FED. AID PROJECT		
CONTRACT NO. 99232				

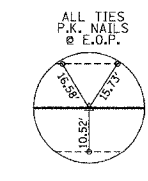
**ENTRANCES TO BE BUILT**  
 LT. STA. 6+02 F.E. -1.75% AGG. 24' SURF.  
 LT. STA. 5+97 F.E. -4.52% AGG. 24' SURF.  
 QUANTITIES INCLUDED IN EARTHWORK TABLE.



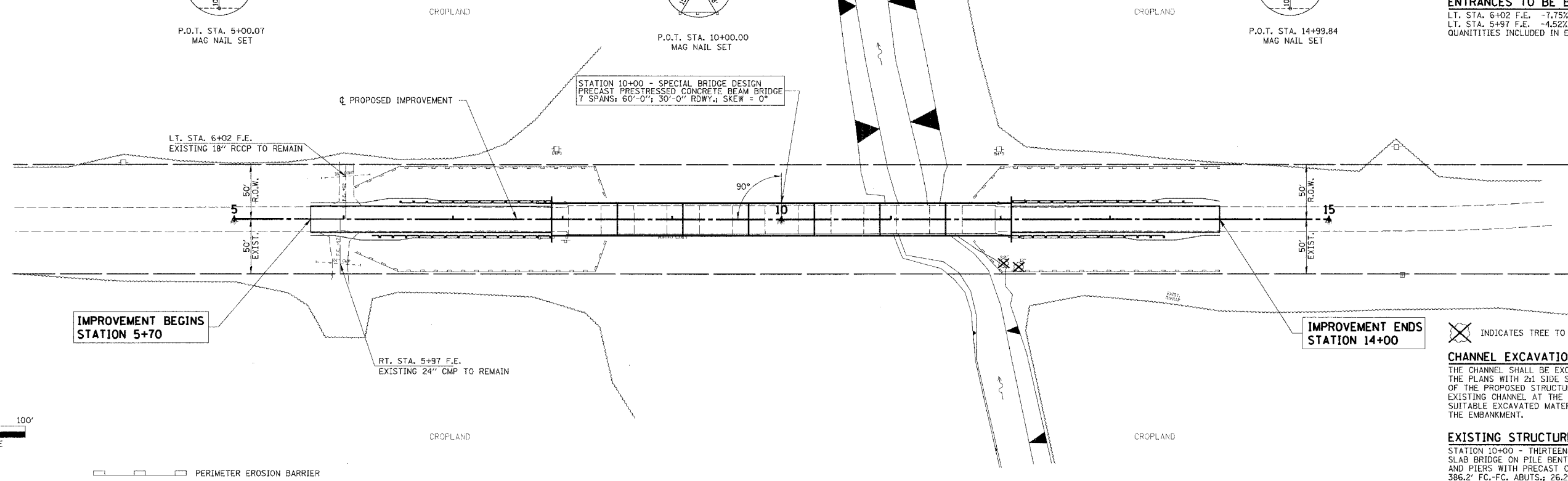
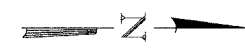
P.O.T. STA. 5+00.07  
MAG NAIL SET



P.O.T. STA. 10+00.00  
MAG NAIL SET



P.O.T. STA. 14+99.84  
MAG NAIL SET



✕ INDICATES TREE TO BE REMOVED

**CHANNEL EXCAVATION**  
 THE CHANNEL SHALL BE EXCAVATED AS SHOWN IN THE PLANS WITH 2:1 SIDE SLOPES WITHIN THE LIMITS OF THE PROPOSED STRUCTURE, THEN TAPER TO THE EXISTING CHANNEL AT THE R.O.W. LINES. ONLY SUITABLE EXCAVATED MATERIAL SHALL BE USED IN THE EMBANKMENT.

**EXISTING STRUCTURE NO. 030-3001**  
 STATION 10+00 - THIRTEEN SPAN PRECAST CONCRETE SLAB BRIDGE ON PILE BENT CONCRETE ABUTMENTS AND PIERS WITH PRECAST CONCRETE PILES.  
 386.2' FC-FC ABUTTS. + 26.2' O.-O. DECK  
 REMOVAL OF EXISTING STRUCTURES = 1 EACH

PLAN	SURVEYED	DATE
NOTE BOOK	BY	06-20-02
NO. SHEETS	BY	06-20-02
	BY	06-20-02

PROFILE	SURVEYED	DATE
NOTE BOOK	BY	06-20-02
NO. SHEETS	BY	06-20-02
	BY	06-20-02

